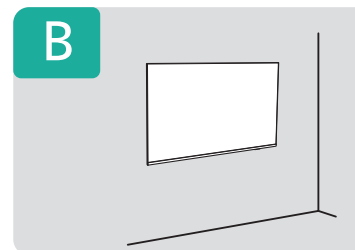
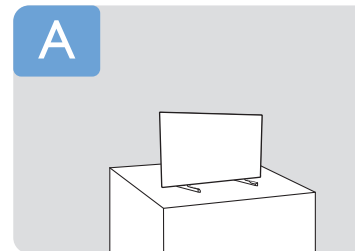
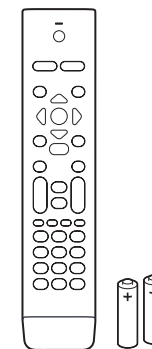
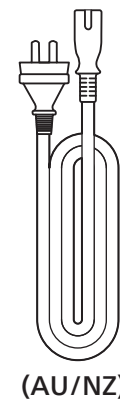
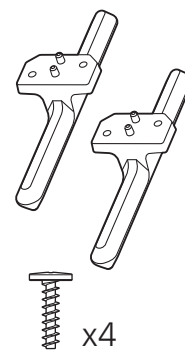
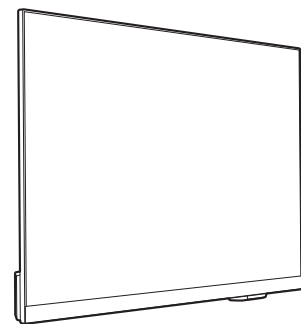


PHILIPS

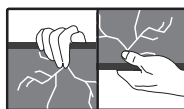
Professional
Display Solutions

Quick Start Guide

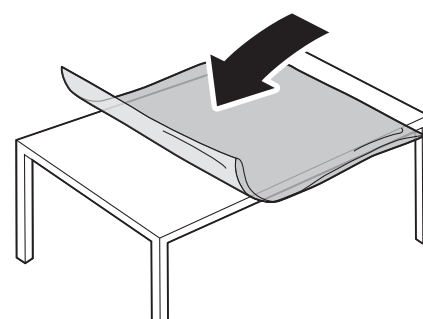
24HFL4518/97



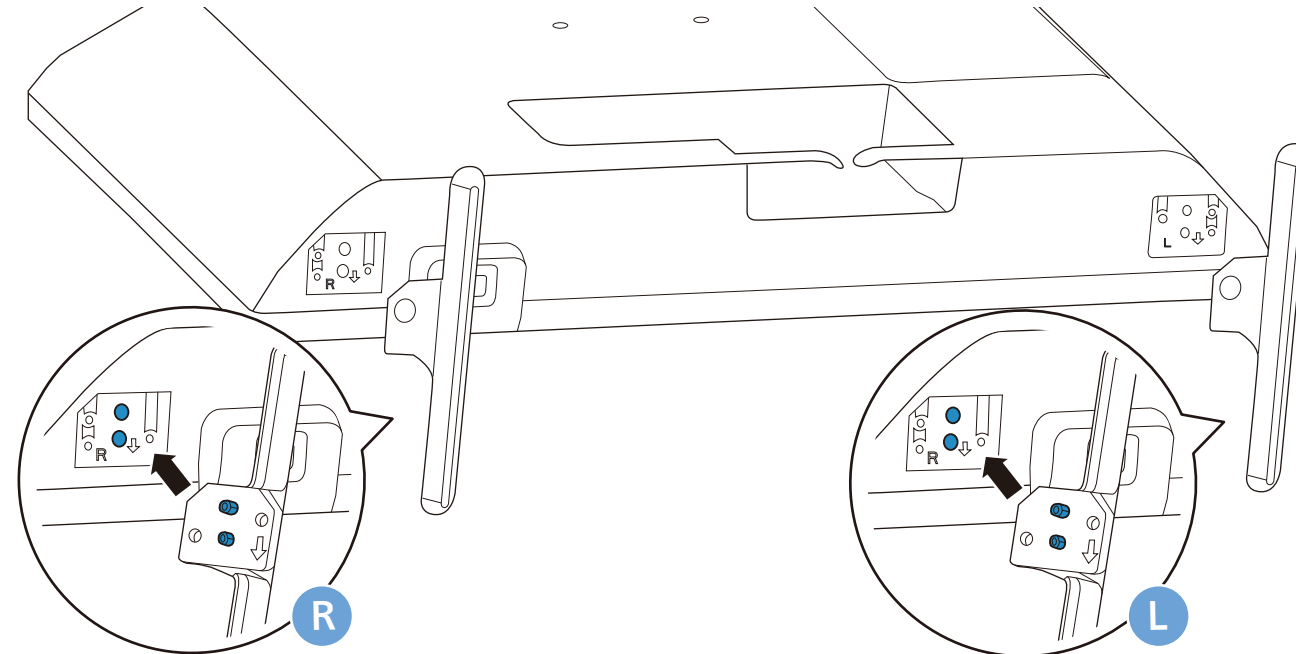
A



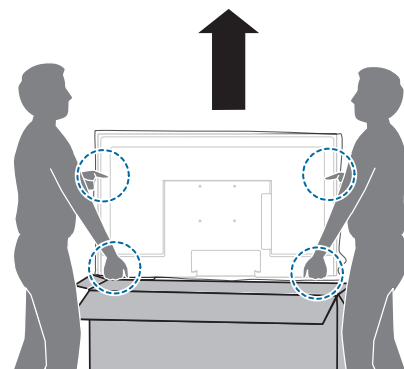
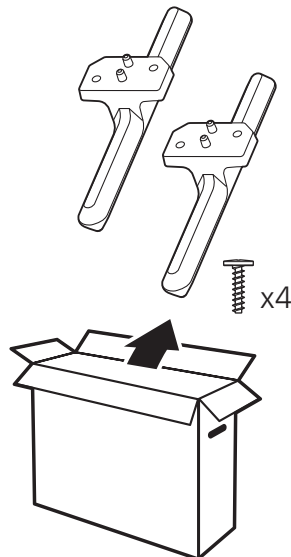
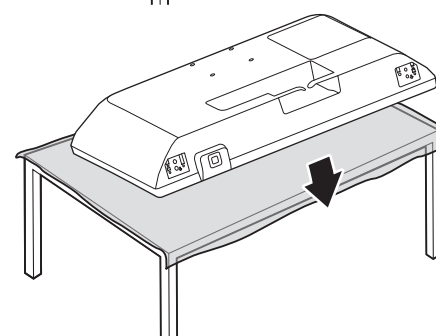
1



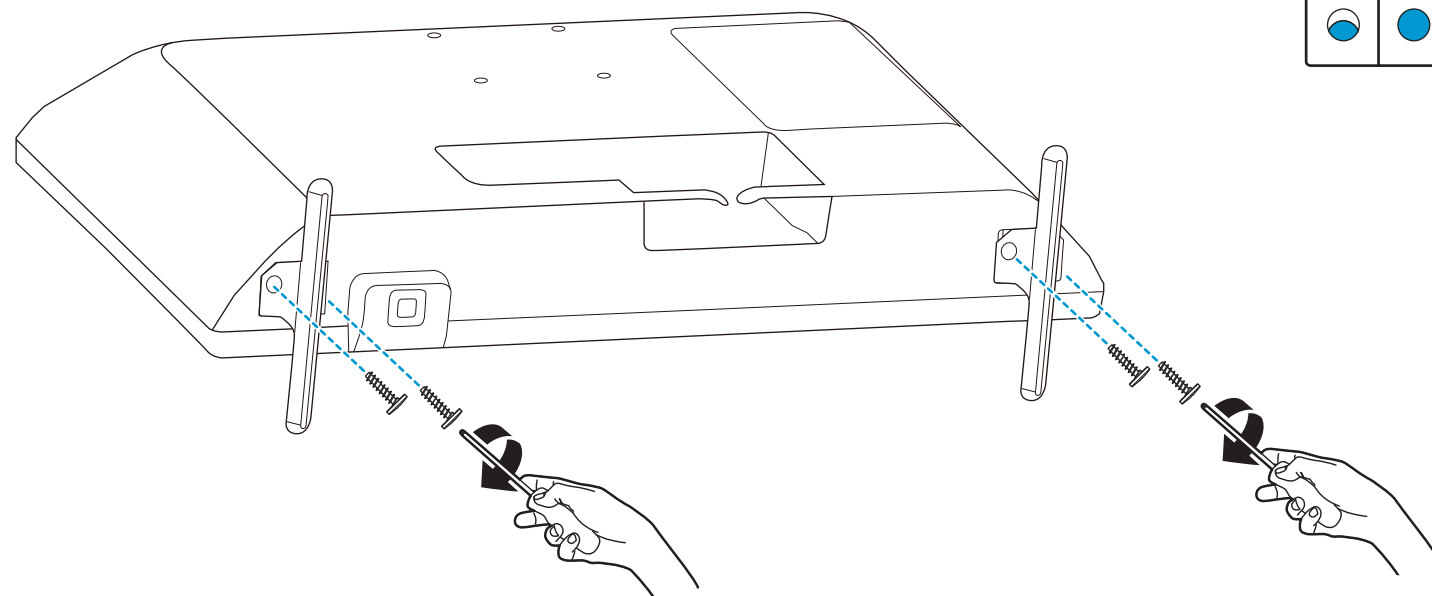
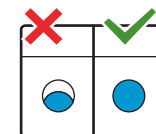
3



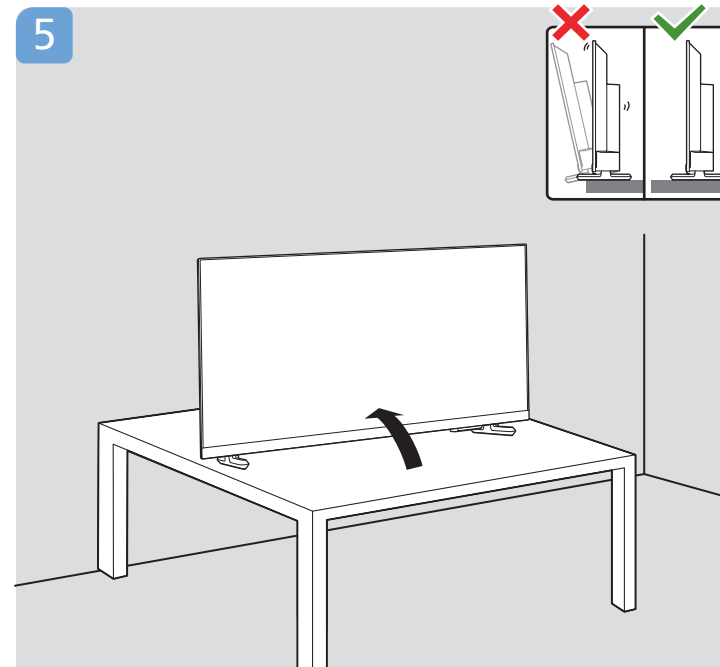
2



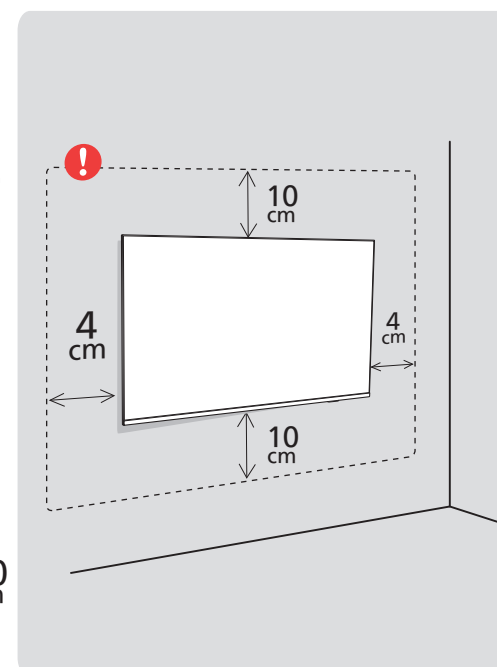
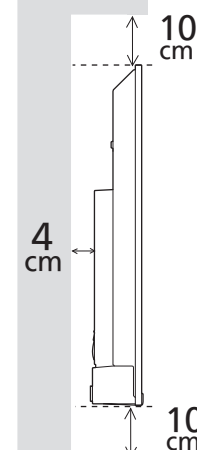
4



5

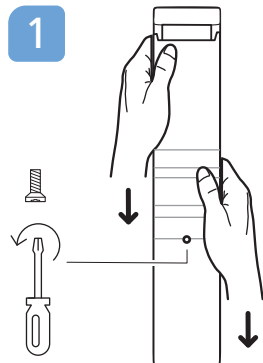


B

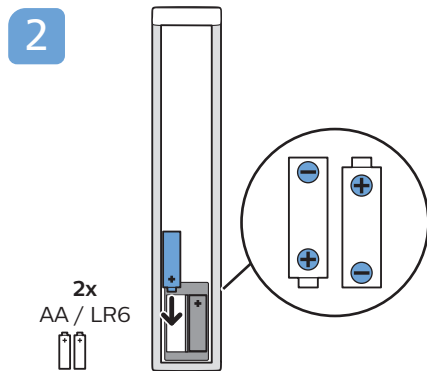




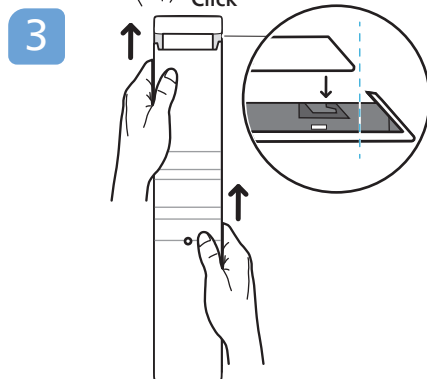
1



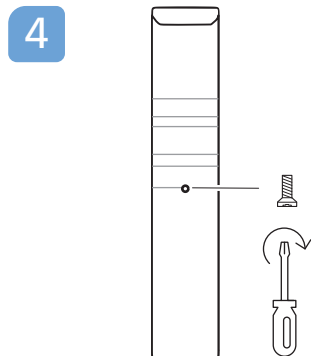
2



3



4



English Read the safety instructions.

Bahasa Malaysia Baca arahan Keselamatan.

Bahasa Indonesia Baca petunjuk keselamatan.

Deutsch Lesen Sie die Sicherheitshinweise.

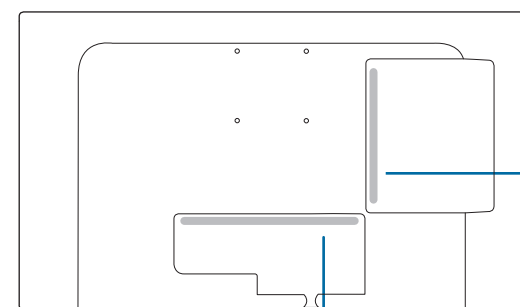
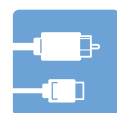
Français Lisez les consignes de sécurité.

ภาษาไทย โปรดอ่านคำแนะนำด้านความปลอดภัย

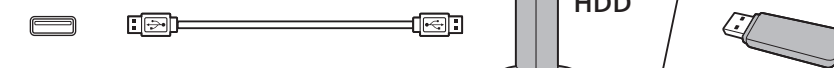
Tiếng Việt Hãy đọc chỉ dẫn an toàn.

简体中文 请阅读安全说明。

繁體中文 請閱讀安全說明。



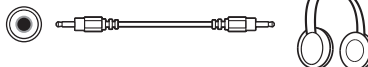
USB



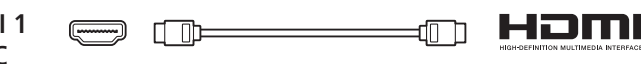
HDD



HDMI 1



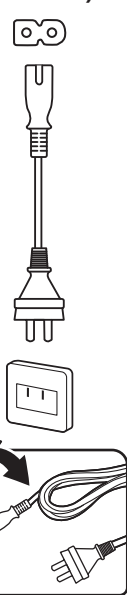
ARC



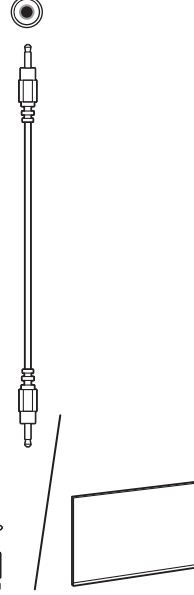
HDMI



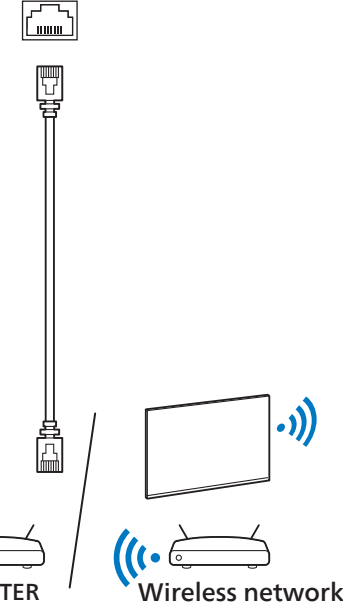
POWER
(AU/NZ)



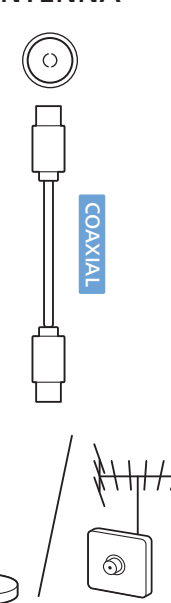
IR IN/OUT



NETWORK



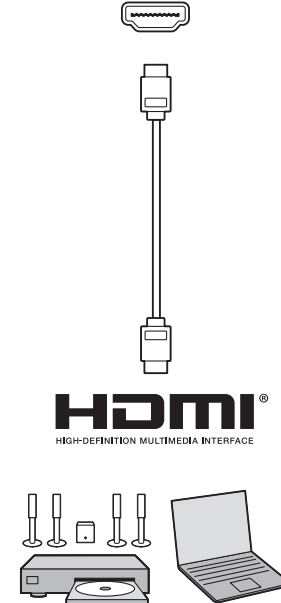
TV
ANTENNA



8Ω x1
AUDIO
OUT



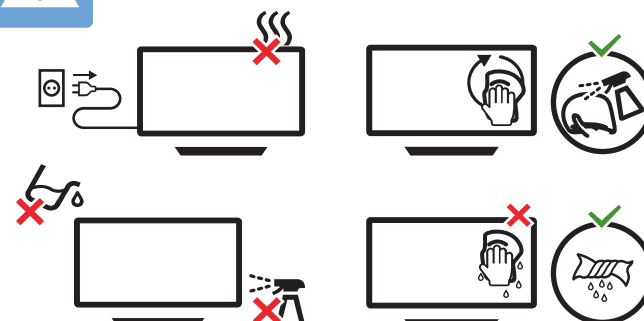
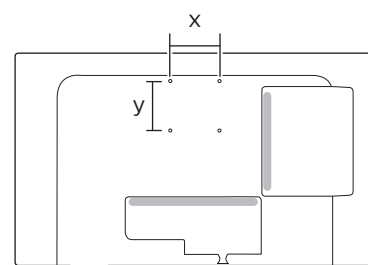
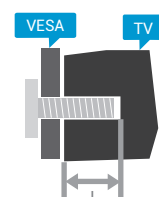
HDMI 2



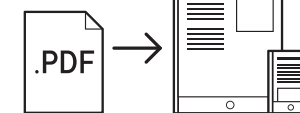
Wall Mount dimensions (x, y)

24" 75x75mm M4 (L: 6mm~8mm)

60 cm



www.philips.com/support
4518 Series
User Manual



All registered and unregistered trademarks are property of their respective owners.
Specifications are subject to change without notice.
Philips and the Philips' shield emblem are trademarks of Koninklijke Philips N.V. and are used under license from Koninklijke Philips N.V.
This product has been manufactured by and is sold under the responsibility of Top Victory Investments Ltd. (or one of its related affiliates), and Top Victory Investments Ltd. (or one of its related affiliates), is the warrantor in relation to this product.
2024© TOP Victory Investments Ltd.
All rights reserved.