

# PHILIPS

## Water Stations

Reverse Osmosis  
Tap Water Station

AUT6103  
AUT6104



## Installation and User manual



# Contents

I. Product Introduction	1
II. Product Specifications	2
III. Product Overview	3
IV. Installation	4
Before installation	5
Installation Steps	7
System flush before use	13
V. Instructions for Use	14
1. First-time use	14
2. Smart Faucet User Interface	14
3. Dispensing water	15
4. Displayi ng Total Dissolved Solids	15
5. Flushing after 2 days non-use	16
6. Disabling of the heating function before 2+ days non-use	16
7. Storage of the filter cartridge before 7+ days non-use	17
8. Routine maintenance	17
VI. Precautions and warnings	18
VII. Filter lifetime and replacement	19
VIII. Troubleshooting	21
IX. Guarantee & Service	22
X. Packaging list	24



Installation video

# I. Product Introduction

## **Thank you for choosing Philips!**

We appreciate your decision to prioritize health and environmental sustainability.

Philips's commitment is to make water better for both people and the planet.

With your new Philips Tap Water Station, you can enjoy the benefits of clean and filtered water while contributing to the fight against single-use plastic bottle waste.

The Philips Tap Water Station is thoughtfully designed with the best-in class RO filtration system, come with a 2.1L fast-heat boiler and smart faucet, configuration to fit seamlessly into your home.

By choosing Philips, you are not only improving your own drinking water but also making a positive impact on the environment. Each Philips 5-in-1 Aquaporn Inside™ is long lasting for 24months\*, filter replaces up to thousands of single-use plastic water bottles, reducing plastic waste and promoting sustainability.

If you need information or if you have any problems, please visit the Philips website at [www.philips.com](http://www.philips.com) or contact the consumer care center in your country. If there is no consumer care center in your country, go to the local dealer.

\*Actual filter lifetime depends on the daily usage and local tapwater quality.

## **CAUTION:**

DO NOT USE WITH WATER THAT IS MICROBIOLOGICALLY UNSAFE OR WITH WATER OF UNKNOWN QUALITY WITHOUT ADEQUATE DISINFECTION BEFORE OR AFTER THE SYSTEM.

## **WARNING:**

FOR CORRECT OPERATION OF THIS APPLIANCE, IT IS ESSENTIAL TO OBSERVE THE MANUFACTURER'S INSTRUCTIONS.



AS 3497  
WM-040327  
AS 3498  
WM-040328

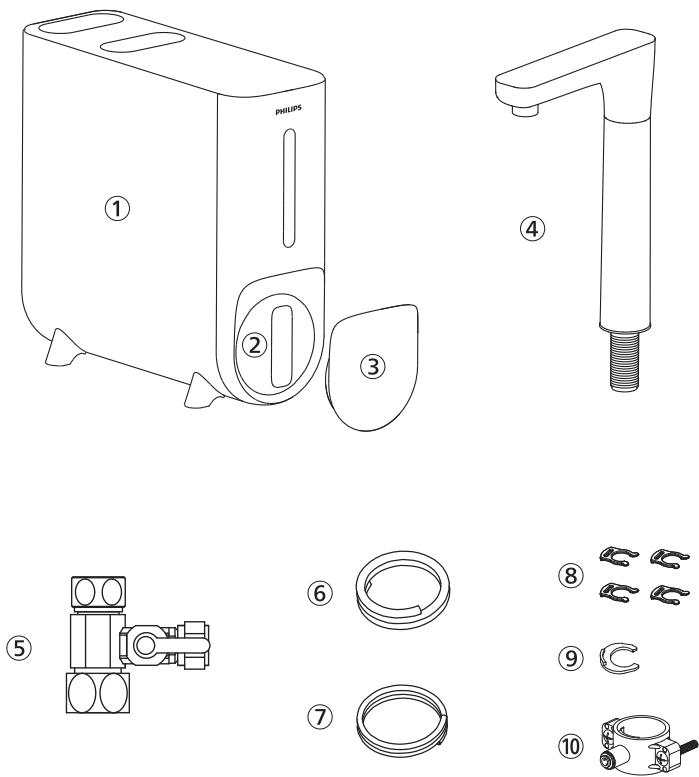
## II. Product Specifications

Product name	Philips RO Tap Water Station	
Product model	AUT6103	AUT6104
Water flow rate	1.58L/min	2.1L/min
Rated power	1435W	1460W
Filtration capacity	6000L	
Inlet water pressure	0.1-0.6 MPa	
Inlet water temperature	5-38℃	
Environment temperature	4-40℃	
Rated voltage	220-240V~	
Applicable water source	Municipal tap water	

**Notes:**

- When the inlet water pressure exceeds 0.6 MPa, a pressure relief valve should be installed before the system. When the inlet water pressure is below 0.1 MPa, a pressure booster should be installed before the system. The pressure relief valve and extra pressure booster not included in the box, need to be purchased separately.
- Do not use with water that is microbiologically unsafe or of unknown quality without adequate disinfection before or after using of the system.

# III. Product Overview



- ① Main unit

② 5-in-1 compound filter

③ Front cover

④ Smart faucet

⑤ Three-way ball valve
- ⑥ 3/8" tap water inlet pipe (white)

⑦ 1/4" drain pipe (grey)

⑧ 1/4" quick connector lock clip

⑨ 3/8" quick connector lock clip

⑩ Drain saddle

## IV. Installation

### **WARNING!**

#### **Product Safety information!**

#### **IMPORTANT – READ CAREFULLY BEFORE INSTALLATION**

- This product must be installed in compliance with AS/NZS 3500.4 Plumbing Code of Australia (PCA) and all Applicable local plumbing and electrical regulations.
- This Product is for Indoor use only and should be plugged into 230V socket with reliable earthing.
- When installing this product and using it for the first time. DO NOT SWITCH ON THE HOT TANK unless water is flowing freely from the outlet when the hot RED button is activated.
- Do not use accessories which are not authorised by the manufacturer. The warranty will terminate automatically if machine failure is caused by unauthorised accessories.
- Before installation, it is important to check the condition of the system to make sure it has not been damaged during transport. Unpack the system and its accessories. Remove the protective packaging materials. Recyclable materials have been used for the packaging and should be disposed of in the appropriate recycling bins or at the specific local recycling centers.

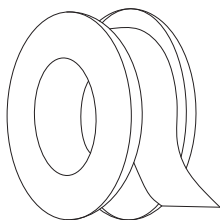
 **WARNING:** Keep plastic bags out of the reach of children, as they may be dangerous.

- Check if anything is missing according to the packing list and the overview.
- Given that the system will improve the quality of your drinking water, all tools to be used in the installation process should be clean, rust and grease-free.
- The installation process should be carried out under appropriate hygienic conditions, taking all necessary precautions concerning materials and components that will come into contact with water to be treated or consumed.
- Avoid external contamination of the system through improper handling, use of gloves, sanitizing gel, and wash hands as often as necessary during the installation process, first use, and system maintenance.
- The system and installation shall comply with applicable local regulations.
- This product cannot be disposed of with other domestic waste products.
- At the end of the product's service life, it should be returned to a local recycling center, indicating that it contains electric and electronic components. The appropriate collection and treatment of the product, which is no longer to be used, contributes to the preservation of natural resources and avoids any potential public health risks.
- Only qualified plumber for Installation and maintenance.



# Before installation - part A

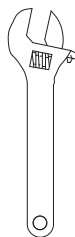
- Confirm the installation position of the system underneath the kitchen bench;
- Confirm the installation position of the faucet on top of the kitchen bench;
- Confirm there is a power socket underneath the kitchen bench;
- Check the packing list and confirm you have all the accessories on the list;
- Prepare necessary tools for installation:



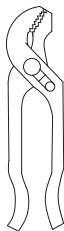
Teflon tape



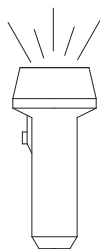
Screwdriver



Wrench



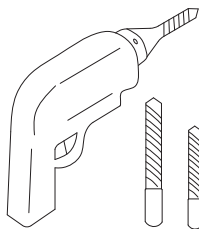
Pipe cutter



Flashlight



Rag



Electric drill

## Before installation - part B

### Faucet hole (25mm - 31mm) needs to be available.

The smart faucet needs to be installed on the countertop via a 25mm – 31mm hole near the sink.

Please confirm if an existing, suitable hole is available (Figure 2).

If no hole is available, it needs to be created.

A reference sticker - to help position the hole - is included with the system.

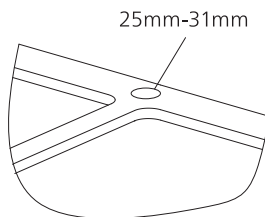
**It's highly recommended to have the hole drilled by a qualified trades person.**

For a better understanding of the process, please be advised that there are many instruction video's available on YouTube. Simply search for "how to drill a faucet hole" instruction video's.

The following steps should be explained in the video's:

- a. Choose a suitable place to install the faucet and leave enough space for the nut to avoid touching the wall or sink.
- b. Choose a diamond core bit for granite, and a carbide drill bit for stainless steel. Do not use a hammer drill on natural stone, glass or ceramic.
- c. Glue the sticker on your sink or countertop, and drill a hole referring to the sticker hole size.
- d. Make an indent with a centre punch on a stainless-steel sink before drilling to help guide the bit.
- e. Be careful when drilling on a porcelain sink as it can be easily chipped. Apply downward pressure firmly on the bit until you break through the surface.
- f. Starting at the lowest speed, and hold the drill straight with firm pressure to prevent the bit from walking on the counter.
- g. Once you break through the surface, swift the drill to apply pressure in evenly.

Remember to wear safety glasses.

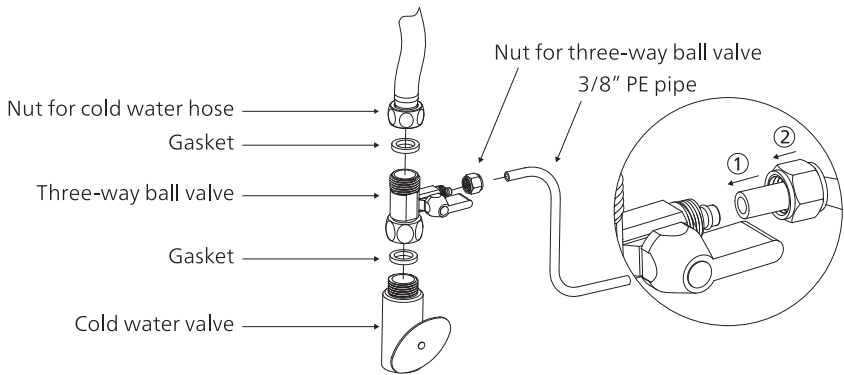


(Figure 2)

# Installation Steps

## Step 1: Installing the three-way ball valve

- a. Turn off the cold water supply. Turn on the kitchen tap water faucet to release the pressure and allow water to drain from the line. Disconnect the cold water hose from the cold water valve.
- b. Install the three-way ball valve on the cold water valve and tighten the connection with a wrench.  
(Please do not miss the gasket inside the three-way ball valve during installation.)
- c. Connect the cold water hose to the three-way ball valve and screw it tightly with a wrench.  
(Please don't miss the gasket in the tap water hose during installation.)
- d. Slide the nut of the three-way ball valve onto the 3/8" PE pipe and insert the pipe into the opening of the three-way ball valve. Tighten the nut with a wrench.



## Step 2: Install the Smart Faucet

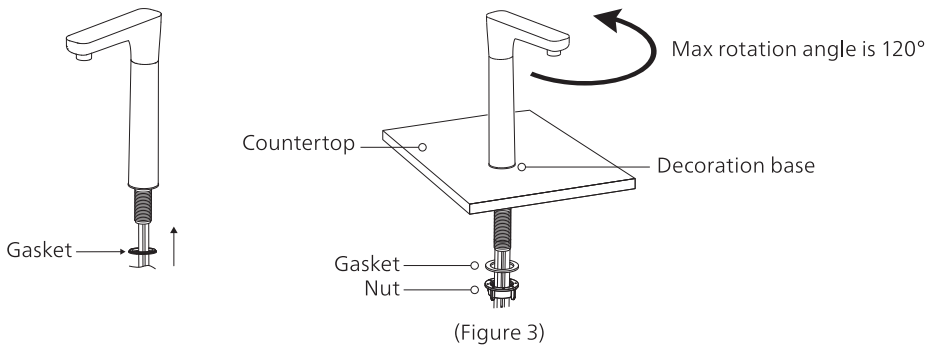
### NOTE:

If your kitchen sink or countertop does not have an existing hole (25mm-31mm) you will have to drill one. Please refer to page 6.

- Insert the faucet stem, powercord and filtered water tubing into decoration base and hole on the countertop in turn.
- Under the sink, slide on the nut and tighten it up (Figure 3).

### NOTE:

The rotation angle of the faucet is 120°, please use the faucet within this angle range. To avoid damage, do not force the faucet.



### Step 3: Install the Drain Saddle

- a. Stick the foam seal on the front plate of the drain saddle. Ensure that the hole of the foam seals aligned with the hole of the front plate (Figure 4).
- b. Choose a spot on the drain pipe that is convenient for installing the drain saddle (Figure 5).

**NOTE:**

It's recommended to install the drain saddle on the vertical drain pipe

- c. Slip the front plate on one end of the tubing without a mark and insert the tubing into the dilled hole for about 60°.
- d. Position the back plate on the drain pipe by tightening the screws and nut sevenly while leaving the tubing in the hole (Figure 6).

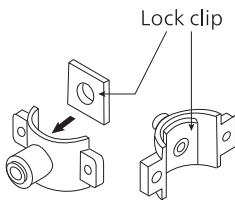
**⚠ WARNING:**

To ensure smooth drainage and exhaust of the system, the drain water tubing must no touch the side wall of the drain pipe. In the proce of boiling water, do not pull out the waste water tubing from the sewer to avoid scalding.

- e. Pop the locked lip on to the fitting to secure the connection (Figure 6).

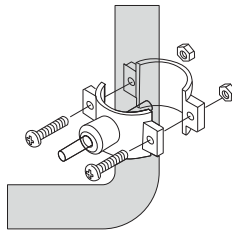
**NOTE:**

- In some area as the drain tubing must be connected to the drainpipe through the air gap. Consumers must purchase air gap accessories separately.
- Regular inspections are needed to see if the drain water tube is blocked.

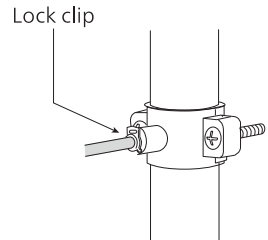


Front plate

(Figure 4)



(Figure 5)



(Figure 6)

## Step 4: Position the System Housing

Ensure that there is sufficient space under the countertop to install the system.

Set aside 30mm of space around the system to avoid placing the system against the cabinet (Figure7).

a. The power-supply receptacle for the appliance shall be installed in a cabinet on a wall adjacent to the under counter space in which the appliance is to be installed.

b. There should be an opening through the partition between the compartments specified in that is large enough for the attachment plug to pass through.

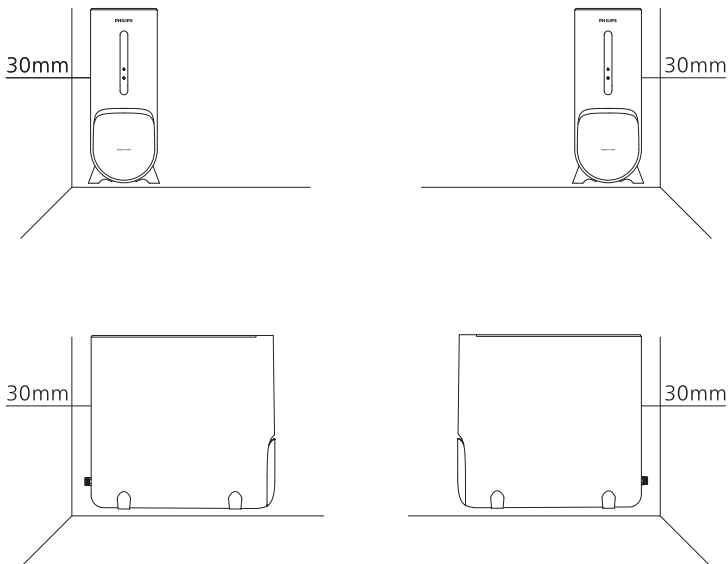
The longest dimension of the opening shall not be more than 38mm.

c. If the partition is wood, the edges of the opening specified in should be smooth and rounded. If the partition is metal, it should be covered with an edge protect or provided for this purpose by the manufacturer.

d. Care should be exercised when the appliance installed or removed in order to reduce the likelihood of damage to the supply cord.

### NOTE:

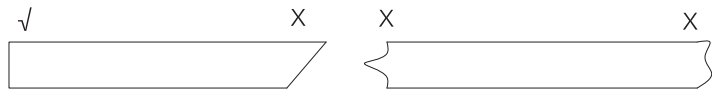
Position the front panel facing toward you, which will be convenient for future filter replacement and indicator checking. You can also adjust the placement direction of the system according to the layout under the sink.



(Figure7)

Step 5: Installing the pipes

a. Pipe cutting: Cut a suitable length of PE pipes, the incision should be flush, as shown in the figure below.



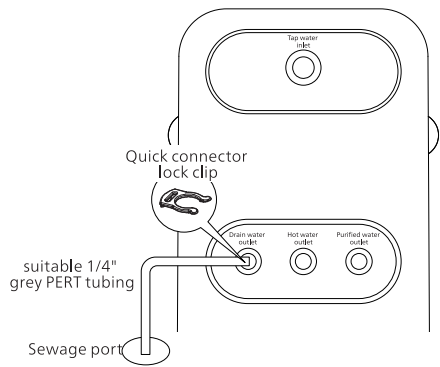
Pipes name	3/8" Tap water pipe	1/4" Purified water pipe	1/4" Hot water pipe	1/4" Drain water pipe
Corresponding color	white	blue	red	grey

NOTE:

Make sure it is fully inserted until you reach the mark on the tubing and pop up the lock clip.

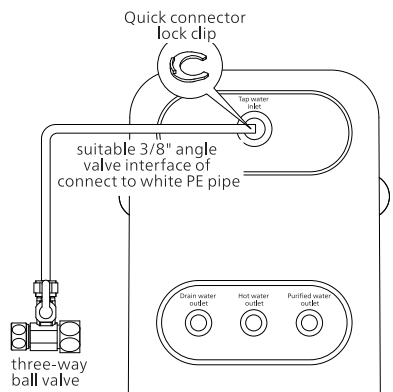
b. Installing the drain pipe (grey)

- Use a pipe cutter to cut a suitable length of the grey 1/4" PE pipe.
- Insert one end of the pipe into the drain outlet hole on the top of the system until it stops, and then insert a quick connector lock clip into the card slot of the quick connector fitting.
- Insert the other end of the pipe into the sewage port and fix it.



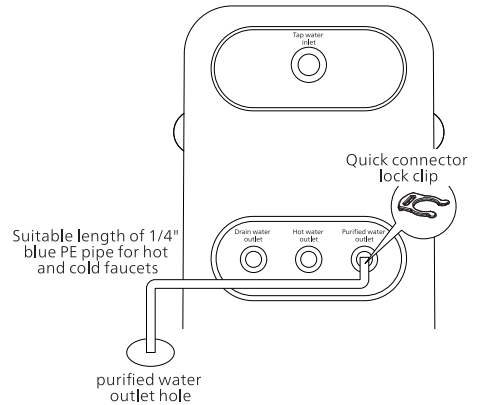
c. Installing the tap water pipe (white)

- Use a pipe cutter to cut a suitable length of the PE pipe which is connected with the angle valve joint.
- Insert one end of the pipe into the water inlet hole on the top of the system until it stops, and then insert a quick connector lock clip into the card slot of the quick connector fitting.



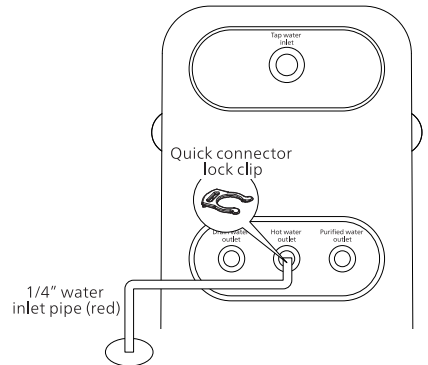
d. Installing the purified (outlet) water pipe (blue)

- Use a pipe cutter to cut a suitable length of the blue 1/4" PE pipe of the faucet with a pipe cutter.
- Insert the pipe into the purified water outlet hole on the top of the system until it stops, and then insert a quick connector lock clip into the card slot of the quick connector fitting.



e. Installing the purified hot water pipe (red)

- Use a pipe cutter to cut a suitable length of the red-hot water pipe of the faucet with a pipe cutter.
- Insert the pipe into the hot water outlet hole on the top of the system until it stops, and then insert a quick connector lock clip into the card slot of the quick connector fitting.

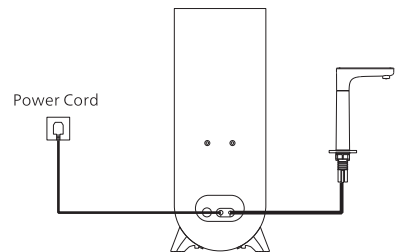


f. Connect the faucet power cord

Insert the faucet power cord which is connected to the faucet into the " FAUCET " connector at the back of the housing and tighten the nut.

**NOTE:**


DO NOT insert the plug into the socket yet.



## System flush before use

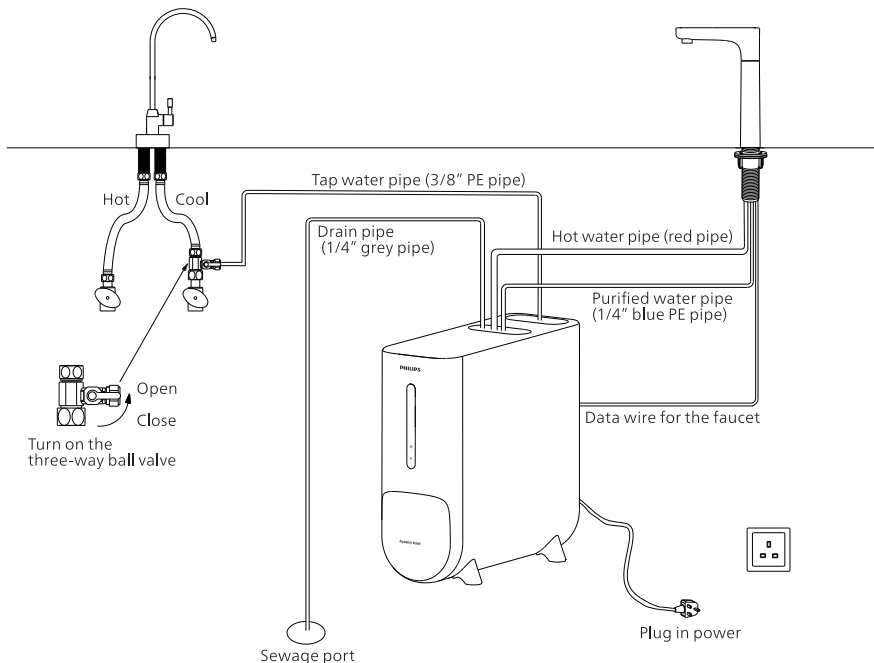
- After installing all the pipes, switch the three-way ball valve to enable the incoming water flow.  
Check for leaks.
- Insert the system's power plug into the socket.

### **WARNING:**

- The system plug must be inserted in to a grounding socket that complies with local codes and regulations.
  - If the system can't be powered on after you insert the power plug check whether the power plug is live; if the power plug is live and the system still cannot be powered on normally, please feel free to contact us.
- The faucet interface will display a 25-minute countdown to flushing.  
Press "  " the system will rinse the filter membrane for 5 minutes.  
After 5 minutes filter membrane flushing, the water will go through pipelines and the heat tank, flush for another 20 minutes.

### **WARNING:**

THIS APPLIANCE MAY DELIVER WATER AT HIGH TEMPERATURE, REFER TO THE PLUMBING CODE OF AUSTRALIA (PCA), LOCAL REQUIREMENTS AND INSTALLATION INSTRUCTIONS TO DETERMINE IF ADDITIONAL DELIVERY TEMPERATURE CONTROL IS REQUIRED.



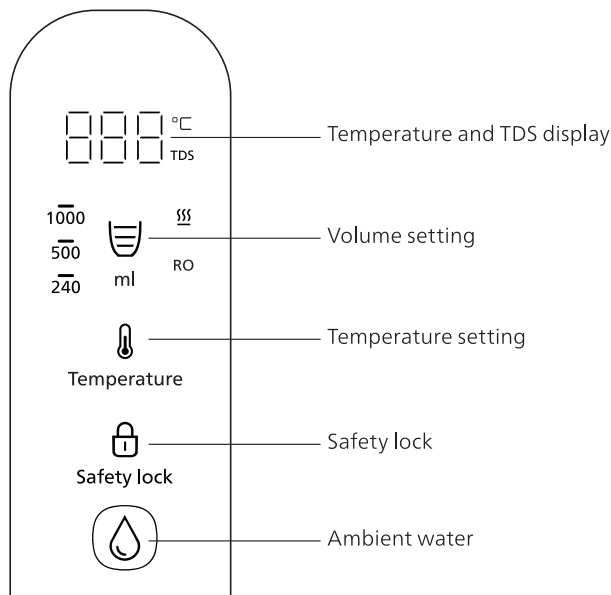
# V. Instructions for Use

## 1. First-time use

Perform a 25 minutes system flush, as described above.  
The faucet interface will display a 25-minute countdown.  
After flushing is complete, the system is in standby mode.  
The heating function will automatically turn on when the boiler is filled with purified water.

- DO NOT drink the flushed water
- A bubbling noise can be expected.
- Check if there is leakage for each part of the system during the rinsing, wipe all the joints and connections with a towel, if the tissue stays dry, it means the system is installed properly.
- After the rinsing is done, make sure there is no leakage.

## 2. Smart Faucet User Interface



### 3. Dispensing water

**Wake up the appliance:**

Press the "🔒" or press any other button. The appliance will automatically go to sleep mode if there is no operation within 1 minute.

**Select the desired temperature:**

Press "🌡️" repeatedly to choose between 45°C, 85°C and 95°C.

Long press "🌡️" to achieve the heating mode 2, then press "🌡️" to repeatedly choose between: 45°C, 55°C, 65°C, 75°C, 95°C, 95°C.

**Note:** Hot water temperature settings are measured at the heating element, not the dispensed temperature. This appliance is not calibrated for commercial or scientific use. Temperatures may vary.

**Select the desired volume:**

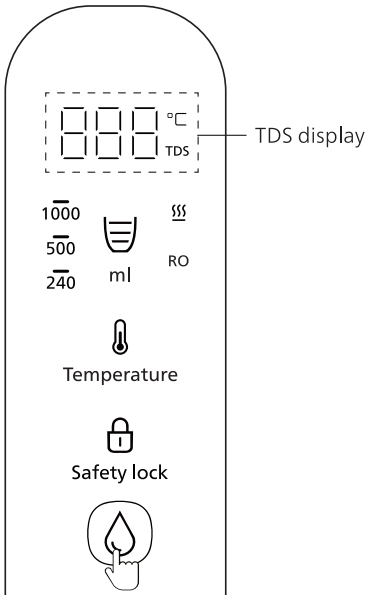
- a. Press "🥄" repeatedly to choose between 240ml, 500ml and 1000ml.
- b. Alternatively, long press "💧" for continues dispensing. Press again to stop the dispensing.
- c. Press "🔒" to unlock the appliance (only when extracting hot water)
- d. Press "💧" to start dispensing.
- e. Press "💧" again or press any other buttons to stop extract water.

### 4. Displaying Total Dissolved Solids

The smart faucet can display the level of Total Dissolved Solids (TDS) that is available in the purified water after the filtration process.

The displayed TDS value is stored in the memory of the system and updated after dispensing ambient water for 20 seconds continuously.

Long press the "💧" to trigger continues water dispensing and let the water run for 20 seconds. After the initial TDS update, the TDS value is updated every 3 seconds.



## 5. Flushing after 2 days non-use

If the system is not used for more than 2 days, first switch on the ambient water, drain the water for 2 minutes, and then switch on the hot water for 3 minutes before starting to have drinking water.

## 6. Disabling of the heating function (before 2+ days non-use)

a. Press " 🔒 " to disable the heating function.

\*When the heating function is turned off, ambient water can be used normally.

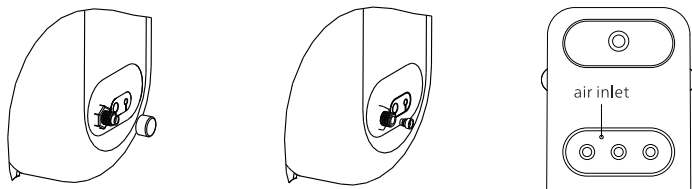
### ⚠️ WARNING:

- After disabling the heating function, there might still be hot water in the pipes.

- Please be careful not to burn yourself when taking water from the faucet.

b. To prevent bacteria build-up in the hot-water-tank, please manually empty the boiler based on below steps.

- Use a sharp object such as paper clip to push open the air inlet of the boiler keep the air inlet open until the water is drained.



### ⚠️ WARNING:

- After turning off the heating tank, there is still a lot of hot water in the tank.

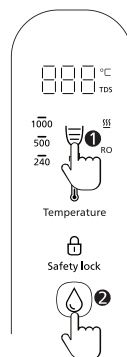
- Please be careful not to burn yourself when emptying the water from the tank.

### To turn on the heating function:

a. Press " ☰ " and " 🔒 " twice to fully fill the boiler.

\* water coming out of the tap means the boiler is full .

b. Press " 🔒 " to enable the heating function.



## 7. Storage of the filter cartridge (before 7+ days non-use)

If the system will not be used for over 7 days, please seal and store the filter cartridge in a refrigerated place to prevent bacteria build-up.

Please following the steps mentioned below:

- Disable the heating function (follow steps mentioned above)
- Switch the filter cartridge and eject it from the system
- Seal the filter cartridge
- Store the filter cartridge in a refrigerator (2-5°C). Do not put it in the freezer.
- Turn off the water supply by switching three-way ball valve
- Long press "Ⓢ" to empty the system.
- Turn off the power

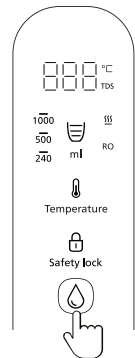
### Re-start the system

- Switch on the three-way ball valve, and connect the system with power.
- Follow the cleaning procedure for the first time use.

Press "Ⓢ" and hold for 10s, the system will rinse the filter membrane for 5 minutes.

After 5 minutes filter membrane flushing, the water will go through pipelines and the heat tank, flushing for another 20 minutes.

- After flushing is completed, the heating function will automatically turn on when the boiler is full of water.



## 8. Routine maintenance

An organic solvents such as gasoline shall not be used for wiping the housing of the device.

If cleaning is required, please gently wipe the surface of the product with a wet cloth after it is disconnected from the power supply.

## VI. Precautions

### **WARNING:**


- Use municipal tap water as the source. Do not use any water of unknown source.
- Children and persons incapable of operating the system safely should use the system under the supervision of a guardian.
- Handle the system gently and carefully. Do not attempt to modify or repair the system by yourself, otherwise the warranty will become invalid.
- This device is intended for domestic use only.
- The inlet water temperature of the system should be 5-38°C. If the temperature is higher than 38°C, the filter cartridges will be damaged and be unable to work. If the temperature is lower than 5°C, the filters might be frozen and the elements of the system will be damaged.
- If the system is abnormal or faulty, stop using it immediately. Close the inlet water valve, and turn on the faucet to empty the system. Events of faults include:
  - Leakage
  - The product is cracked or damaged
  - There is an abnormal sound or burnt smell
  - The machine does not work

Please contact consumer care for inspection immediately.

- If you will not use the system for an extended period, turn off the water supply, and turn on the faucet to release the internal pressure to avoid damage to the system.
- To prevent scalds, please do not touch the faucet outlet pipe during or just after hot water extraction.

 **WARNING:** Use of this system may increase the bacterial content of water.

 **WARNING:** FOR CORRECT OPERATION OF THIS APPLIANCE, IT IS ESSENTIAL TO OBSERVE THE MANUFACTURER'S INSTRUCTIONS.

 **WARNING:** THIS APPLIANCE MAY DELIVER WATER AT HIGH TEMPERATURE. REFER TO THE PLUMBING CODE OF AUSTRALIA (PCA), LOCAL REQUIREMENTS AND INSTALLATION INSTRUCTIONS TO DETERMINE IF ADDITIONAL DELIVERY TEMPERATURE CONTROL IS REQUIRED.

# VII. Filter lifetime and replacement

## Filter lifetime

For the best performance, please change your filter cartridge according to the filter lifetime indicator, or the filter replacement cycle suggested below. When a significant lower flow rate is observed, we recommend changing the filter as well.

**This system can only work with Philips filters.**

Filter	Product model	Model code	Filter lifetime	Filtration capacity
5-in-1 filter	AUT6103	AUT609R600	24 months*	6000L
5-in-1 filter	AUT6104	AUT609R800	24 months*	6000L

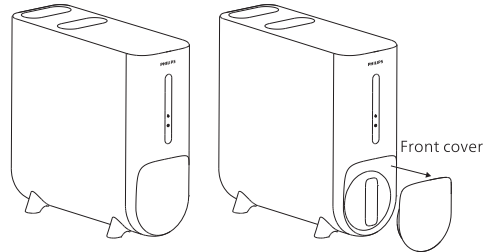
\* The actual lifetime of the filter cartridge depends on the local tap water quality and daily usage. If the inlet water quality is below the average, the actual lifetime of the cartridge would differ from the recommended replacement cycle. If the filter cartridge is blocked, please replace it.

# Filter replacement

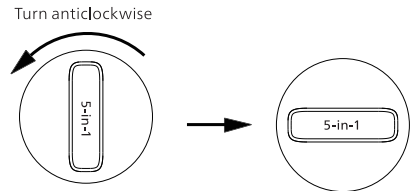
Please change the filter cartridge according to the filter lifetime indicator "RO" on the display panel and filter lifetime indicator in the unit.

New filter cartridge can be purchased from authorized retailers and service center.

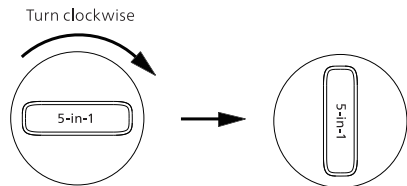
- a. Power off and remove the front cover of the main unit to replace the filter element.



- b. Turn the filter that needs to be replaced anticlockwise for 90° and pull it out.



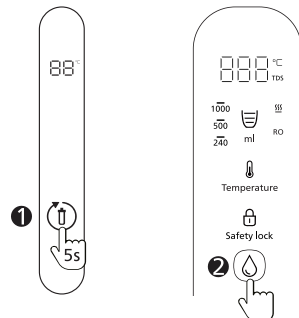
- c. Insert the new filter in the system and turn it clockwise.




- d. Filter reset and rinse

Press and hold the "⏸" for 5 seconds, the buzzer beeps 3 times, the "RO" filter indicator turn white from red again.

Press "💧" the then system will enter into the flushing process.



# VIII. Troubleshooting

Error code	Possible causes	Solutions
"EF" Connection malfunction for the display panel	The system and the display panel are misconnected	Please contact customer service for inspection and repairing
"EU" Connection malfunction for the faucet	The system and the faucet are misconnected	Please reconnect the cable between the faucet and main unit, if still can't solve, please contact customer service for inspection and repairing
	The connection cable between the faucet and the main unit is incorrect	
The UI panel does not show the TDS value	TDS detection probe failure	Please contact customer service for inspection and repairing
Error code "E9"	Heating timeout protection	Short press "  "
Lower water outlet flow rate	The filters expire, and the water outlet flow rate becomes lower	Replace the filters
	The inlet water temperature is too low, and the filtration capacity becomes lower	Use under the required inlet water temperature
Water dripping	The blue exhaust pipe is bent or flattened, resulting in bad exhaust emitting	Straighten or replace the pipe, make sure it is unblocked
	The boiling point is affected by the altitude	Turn down the water temperature setting
No display on the control panel of the main unit	Make sure the power is well-connected	Re-connect the power

## IX. Guarantee & Service

If you need further information or if you have any questions, please visit [www.philips.com](http://www.philips.com) or contact the consumer care center in your country. If there is no consumer care center in your country, go to a local dealer. Within two years from the date of purchase, you will receive free warranty service for any damage caused by the manufacturing process, or components under normal operation confirmed by our maintenance service. The warranty service does not include frequently replaced consumable components, auxiliary devices, transportation fees, and door-to-door service. Please show the proof of purchase to the service personnel during maintenance.

Contact us or the place of purchase for further details.

POWERMOVE DISTRIBUTION PTY LTD 28 The Gateway Broadmeadows VIC 3047, Australia

Consumer Care: 03-9358-5999 Website: [www.philips.com.au/support](http://www.philips.com.au/support)

In this warranty:

We or us means POWERMOVE DISTRIBUTION PTY LTD ABN 46 298 791 002 and our contact details are set out at the end of this warranty;

You means the purchaser or the original end-user of the Goods;

Supplier means the authorised distributor or retailer of the Goods that sold you the Goods in Australia, and Goods means the product or equipment which was accompanied by this warranty and purchased in Australia.

If you require assistance with the operation of the product, its features or specifications please call the POWERMOVE Consumer Care Centre on 03 9358 5999 (Australia, opening hours Monday to Friday 9:00am to 5:00pm AEST)

Australia:

Our Goods come with guarantees that cannot be excluded under the Australian Consumer Law. You are entitled to a replacement or refund for a major failure and for compensation for any other reasonably foreseeable loss or damage.

You are also entitled to have the Goods repaired or replaced if the goods fail to be of acceptable quality and the failure does not amount to a major failure.

This is not a complete statement of your legal rights as a consumer.

#### Additional Warranty:

In addition to the rights and remedies that you have under the Australian Consumer Law, Consumer Guarantees Act or of any other applicable law, we provide the following warranty against defects:

1. If, during the first 2 years from their date of purchase from the Supplier (Warranty Period), the Goods prove defective by reason of improper workmanship or materials and none of your statutory rights or remedies apply, we will repair or replace the Goods without charge.
2. We do not have to repair or replace the Goods under this Additional Warranty if the Goods have been used for a commercial purpose; misused, improperly or inappropriately installed, operated or repaired; abused; damaged; or not maintained in accordance with the manufacturer's instructions.
3. Even when we do not have to repair or replace the Goods, we may decide to do so anyway. In some cases, we may decide to substitute the Goods with a similar alternative product of our choosing. All such decisions are at our absolute discretion.
4. All such repaired, replaced or substituted Goods continue to receive the benefit of this Additional Warranty for the time remaining on the original Warranty Period.
5. This Additional Warranty is limited to repair, replacement or substitution only. As far as the law permits, we will not be liable for any loss or damage caused to property or persons arising from any cause whatsoever.
6. In order to claim under this Additional Warranty, you must telephone us on 03 9358 5999 in Australia within the Warranty Period. You will be asked for details of the Goods, a description of the defect and your personal details. Upon accepting your claim, we shall assist you with either returning the Goods to the Supplier for replacement or to the most convenient Philips Authorised Service Centre for your Goods to be repaired.  
  
In some cases we may require that you return the Goods to us (at the address below) for assessment, repair, replacement or substitution. In these cases you will be issued a Powermove (Australia) return number.  
  
\* All returned Goods must be accompanied by a valid return number. Items that do not have a valid return number will not be accepted for delivery and returned to sender.
7. This warranty is only valid and enforceable in Australia and New Zealand.

# X. Packaging list

Part name	Quantity
Main unit	1x
5-in-1 filter	1x
Quick connector locking plate accessory bag	1x
1/4" PE pipe (grey)	1x
3/8" PE pipe (white)	1x
Smart faucet	1x
Three-way ball valve	1x
User manual	1x
Warranty leaflet	1x
Drill a hole sticker	1x

Please keep this user manual for future reference.  
The information of this user manual is subject to change without prior notice.



Register your product and learn more via the website link below:

**[www.philips.com/water](http://www.philips.com/water)**

Specifications are subject to change without notice

© 2024 AquaShield

All rights reserved.

Philips and the Philips Shield Emblem are registered trademarks of Koninklijke Philips N.V. and are used under license. This product has been manufactured by and is sold under the responsibility of Hong Kong AquaShield Health Technology Company Limited and Hong Kong AquaShield Health Technology Company Limited is the warrantor in relation to this product.

Rev A AUG 24

