

PHILIPS



Face and Body

OneBlade Pro 360

Rechargeable Li-Ion battery

20 length precision comb

Wet and Dry use

LED digital display



QP6552/15

Trim edge and shave any length of hair effortlessly*

Designed to cut hair, not skin

Philips OneBlade Pro Face + Body trims, edges and shaves any length of hair. You get a blade for your face and one with a skin guard for your body. Forget about using multiple tools. OneBlade does it all.

Easy to use

- Blade that doesn't fade easily
- LED digital display shows status of battery and travel lock
- Click-on body comb (3 mm)
- Click-on skin guard for sensitive areas
- Charge anytime, anywhere
- 120 min Li-Ion battery

Comfortable shave

- Unique OneBlade Technology
- Innovative 360 Blade
- Shave it off

Sharp edges

Even trim

Easy to use

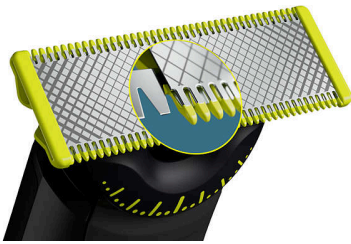
OneBlade Pro 360

Face and Body

QP6552/15

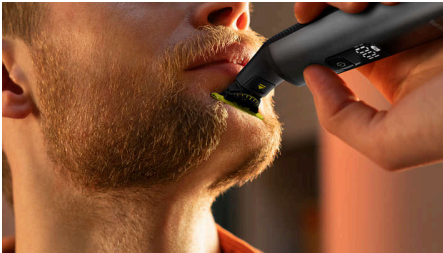
Highlights

Unique OneBlade Technology



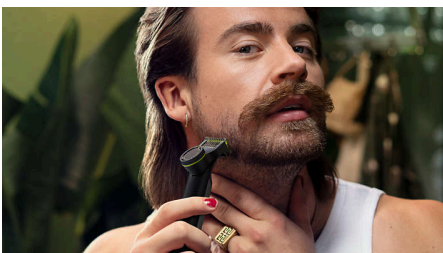
Philips OneBlade has revolutionary technology designed for facial grooming. It can shave any length of hair. Its dual-protection system—a glide coating combined with rounded tips—makes shaving easier and more comfortable. Its shaving technology features a fast-moving cutter (12000 x per min) so it's efficient - even on longer hairs.

Innovative 360 Blade



Innovative 360 Blade moves in all directions and adjusts to every curve of your face to maintain constant skin contact, while enabling control at all times. Easily trim and shave even the most difficult-to-reach areas with fewer passes and greater comfort*.

Trim it down



Trim your beard to an even length with the included adjustable precision comb. Dial up one of the 20 lock-in length settings to get everything from a 5 o'clock shadow to a tight trim or a longer beard style.

Trim Away



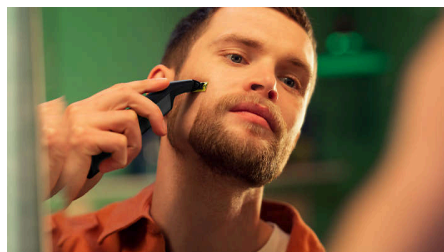
The versatile precision trimming comb offers length settings from 0.4 to 10 mm, giving you an even trim at exactly the length you want.

Edge it up



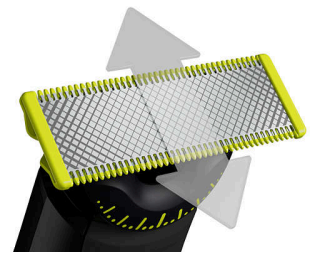
Create precise edges with the dual-sided blade. You can shave in either direction to get great visibility and see every hair that you're cutting. Line up your style in seconds!

Shave it off



OneBlade doesn't shave as close as a traditional blade - so your skin stays comfortable. Go against the grain and shave off any length of hair easily.

Dual-sided blade



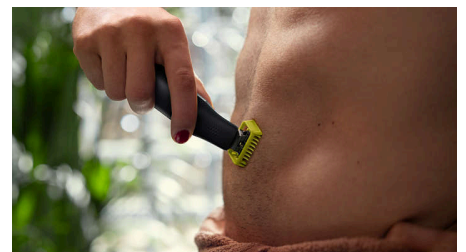
OneBlade follows the contours of your face, allowing you to easily and comfortably shave all areas. Use the dual-sided blade to style your edges and create clean lines by moving the blade in any direction.

Click-on skin guard



Attach the skin guard for an extra layer of protection on sensitive areas.

Click-on body comb



Attach the body comb (3 mm) for an easy trim in any direction.

USB-A charging



Can be charged at home or on the road, perfect for your daily routine and for travel.

Highlights

Blade that doesn't fade easily



Durable stainless steel blade that lasts for up to 4 months of use** to keep that fresh feeling. When the replacement indicator (eject icon) appears on the blade, the blade performance may no longer be optimal. It's time to consider changing the blade for the best shaving experience.

Wet & dry



OneBlade is fully waterproof (IPX7), so it is easy to clean: just rinse it under the tap. You can shave wet or dry, even in the shower - whichever you prefer. No shaving foam needed.

120 min Li-Ion battery



Rechargeable Li-Ion battery delivers 120 minutes of constant styling power after a 1 hour charge.

LED digital display



Be sure that your OneBlade is always ready to go by checking the LED digital display. It alerts you during use if your battery is low, and it indicates charging progress when plugged in. Activate the travel lock to take the OneBlade anywhere you go.

OneBlade Pro 360

Face and Body

QP6552/15

Specifications

Trimming and shaving performance

Shaving system: Contour-following technology, Dual protection system, 360 Blade

Trimming system: Contour-following technology

Accessories

Maintenance: Protection cap

Pouch: Soft pouch

Comb: 20 length comb (0.4 to 10 mm), Click-on skin guard, Click-on body comb

Extra replaceable blade

Power

Charging: 1 hour full charge

Battery type: Li-Ion

Run time: 120 minutes

Automatic voltage: 100-240 V

Max power consumption: 5.4 W

Design

Handle: Ergonomic grip and handling

Colour: Chrome

Service

Replacement head: Replace every 4 months**, QP210, QP220, QP230, QP610, QP620, QP410, QP420

2 year warranty: 2-year warranty on the handle

Ease of use

Charging: USB-A Charging (5 V⁻ / ≥1 A)

Display: LED digital display, Travel lock indicator

Wet & Dry

Rechargeable

USB-A charging: Power adapter not included

