

The image shows a male doctor in a white lab coat and glasses adjusting a patient lying on a table inside a Philips MRI machine. The room is dimly lit with blue ambient lighting. A large screen on the right displays medical data. The Philips logo is visible on the machine's gantry. In the top left corner, there is a white box with the Philips logo and the text 'Ambient Experience' below it.

**PHILIPS**

Ambient Experience

# Enhancing the care environment with Philips Ambient Experience

## Key advantages

- Enhancing the patient experience
- Improving staff workflow
- Delivering across service lines
- Designing a better care environment

## Creating a calming and engaging experience

Higher productivity, more efficient processes, and a better care experience for patients, family and staff – these are some of the tangible results we can help you achieve with Philips Ambient Experience solutions.

Measured success from our 3000+ installations demonstrates that reducing patient stress can lead to better patient compliance, thereby decreasing delays and retakes. This can have a positive impact on your clinical, operational and financial challenges.

Our evidence-based research approach and people-centric design thinking, helps facilities like yours uncover new opportunities to transform the care experience. We use room design, dynamic lighting, video projection, and sound to provide positive distractions and give patients greater control of the environment. In addition, we can provide recommendations for effective staff workflow and optimized storage – all aimed at improving the care experience for patients and healthcare professionals alike.

Ambient Experience solutions have proven successful in waiting areas, exam/procedure suites, recovery rooms, and even entire departments.



# Ambient Experience solutions

## Designing a groundbreaking patient care experience

### What are the elements of an Ambient Experience solution?

#### Active relaxation themes

Themes are an important feature of Ambient Experience, helping patients feel engaged and providing them with positive distraction and a feeling of control. Ambient Experience can access more than 9 hours of thematic content for different age groups, cultures, and personal tastes. The themes are developed to calm the patient and are based on Healing Art guidelines and experience research.

#### Dynamic lighting, sound, and video

A proprietary control system integrates dynamic lighting, sound, and video to provide both positive distraction for the patient and an opportunity to personalize an otherwise intimidating environment. The Ambient Experience theme or color selection and pre-set functionality are accessed with a touchscreen interface. Moreover, patients or staff can connect their own devices to the Ambient Experience system to comfort with personal audio and video.

#### Room design, site planning, and project management

Site-specific recommendations are provided to optimize the clinical area regarding workflow and storage, including opportunities to reduce clutter for a more soothing environment.

These recommendations are incorporated into the standard equipment site plans.

Specific enhancements are available per modality, such as In-bore Connect for positive visual distraction during an MRI exam and automated breathhold support for MR exams. A Pediatric Coaching program brings child-focused stress relief to the youngest patients.

# Ambient Experience for MR



Anxious, claustrophobic, non-compliant patients lead to more retakes, longer procedures, and unnecessary sedation. Calming themes relax the patient prior to and during the exam. In-bore audio and visuals help them to remain calm and compliant.

## Scope of Delivery

### Templated room design

Design recommendations to reduce clutter and improve workflow incorporated in site plans, such as floor island, rounded corners, integrated coil cabinets.

### Project Management

Supervision by Philips project manager. Coordination of communication with contractor and/or architect, resources and implementation.

### Control system and software

Necessary hardware, cabling, and software to control the Ambient Experience components.

### External audio/video

HDMI input for connection of personal devices such as phone or tablet.

### Audio system

Cabling to connect the Ambient Experience system to the audio system with ceiling speakers and headphones of the MR system.

### Ambient Experience themes

A variety of over 42 themes help patients feel engaged and provide them with positive distraction and a feeling of control. The room's dynamic gradient lighting, audio, and video render the theme.

### Journey Manager

The Journey Manager enables creating dedicated journeys from the various Ambient Experience themes, addressing various aged populations, gender and different cultures.

### Touchscreen

The touchscreen provides an easy way to control all components of the system. The contemporary user interface enables an intuitive theme and journey selection, as well as system control functionality. System consists of one wall mounted and 1 desk mounted touchscreen.

### Dynamic gradient lighting

MR compatible, 'wall-washing', dynamic LED spotlight system, controlled by selected theme, color or preset.

### Wall projection

MRI compatible video projector in a RF shielded projector housing.

### Ceiling Lighting Element (Halo)

MR compatible dynamic colored LED lighting element. Specially designed and constructed molded light diffuser. Includes: power supply, cabling and ceiling tiles.

### In-bore Connect

In-bore Connect helps improve the patient experience during the scan by providing step-by-step guidance information and positive distraction. Synced with the Philips MRI, it provides scan progress and breath-hold information during the scan to support patient compliance.

The MRI compatible exam room display accommodates flexible room design options with the RF cage.

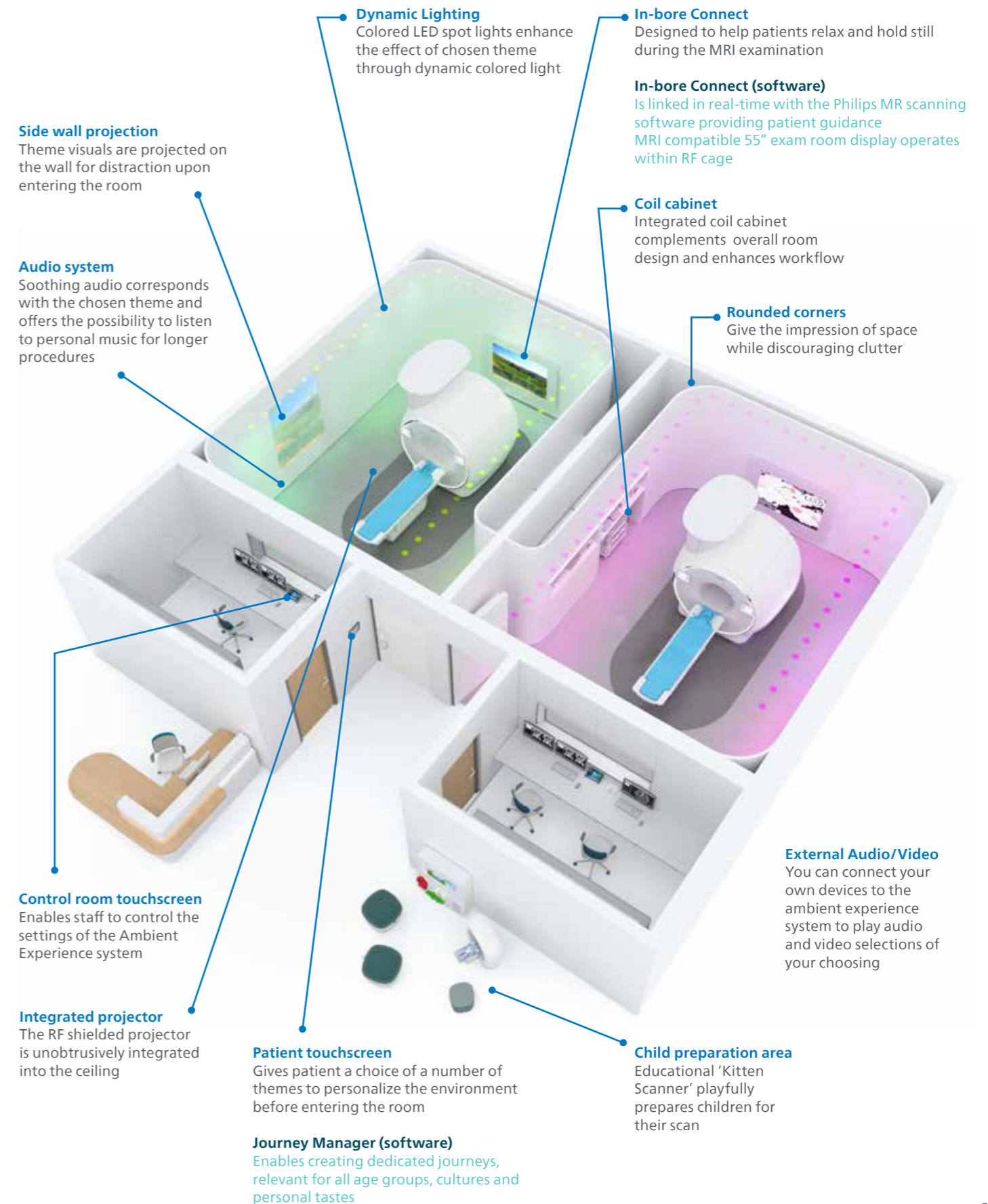
### Pediatric Coaching solution

Successfully scan the vulnerable group of 4+, using as few sedatives as possible, by preparing and guiding children for their MRI scan at home, in the hospital, and during the procedure.

## Accessories and Options

### Storage

Coil cabinet for storing medical equipment out of sight of the patient. The cart port provides storage for another 5 RF coils as well as a parking space for any MR accessory cart up to 140 cm (55 inch).





© 2024 Koninklijke Philips N.V. All rights reserved. Specifications are subject to change without notice. Trademarks are the property of Koninklijke Philips N.V. or their respective owners.

\* OCT 2024

**How to reach us**  
[www.philips.com/ambientexperience](http://www.philips.com/ambientexperience)