

PHILIPS

4K UHD monitor with
Thunderbolt™ 4

Business Monitor

6000 series

27" (68.6 cm)

3840 x 2160 (4K UHD)

27B2U6903



Redefining workflow productivity

This monitor introduces you to lightning-fast connectivity. With its Thunderbolt 4 port, Smart KVM feature and 4K UHD resolution, this combination offers power delivery, source switching and beautiful imagery in one monitor.

Thunderbolt™ 4 for flexibility and performance

- Thunderbolt™ 4 Connection: for lightning-fast connectivity

Designed for the way you work

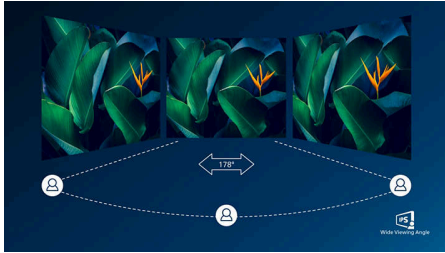
- MultiView enables simultaneous dual connection and view
- Tilt, swivel and height-adjust for an ideal viewing position
- PowerSensor 2: for optimised energy efficiency
- SoftBlue Technology: for comfortable viewing
- Less eye fatigue with Flicker-Free technology
- EasyRead mode for a paper-like reading experience
- Eyesafe-certified blue light protection and colour accuracy
- Earphone hook: for customisable storage
- SmartKVM: for easily switching between sources.

Superb Picture Quality

- IPS LED wide view technology for image and colour accuracy
- UltraClear 4K UHD (3840 x 2160) resolution for precision

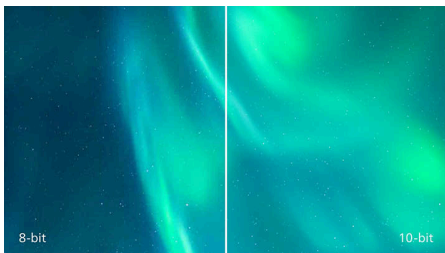
Highlights

IPS technology



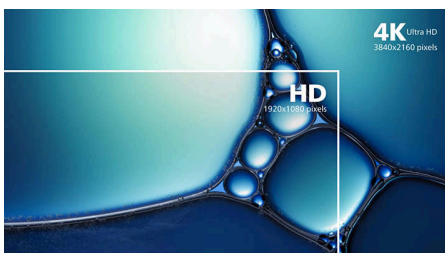
IPS displays use an advanced technology that gives you extra-wide viewing angles of 178/178 degrees, making it possible to view the display from almost any angle. Unlike standard TN panels, IPS displays give you remarkably crisp images with vivid colours, making them ideal not only for Photos, movies and web browsing, but also for professional applications that demand colour accuracy and consistent brightness at all times.

10-bit colours



The 10 bit display delivers rich colour depth with 1.07 billion colours and 12 bit internal processing for re-creating smooth, natural colours without gradations or colour banding.

UltraClear 4K UHD Resolution



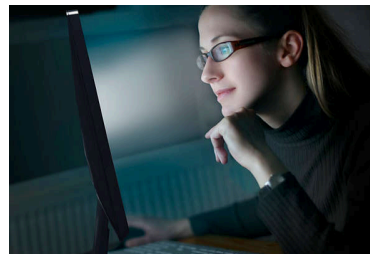
These Philips displays utilise high-performance panels to deliver UltraClear, 4K UHD (3840 x 2160) resolution images. Whether you are a demanding professional requiring extremely detailed images for CAD solutions, a user of 3D graphics applications or a financial wizard working on huge spreadsheets, Philips displays will make your images and graphics come alive.

SmartKVM



Unlike traditional built-in KVM monitor buttons, the smart KVM allows for switching between sources with the click of a button on your keyboard. When all devices are properly connected, users can easily switch between sources by clicking the "Ctrl" key three times.

SoftBlue Technology



SoftBlue LED technology, combined with the monitor's low blue light panel, is an effective solution to reduce the adverse health effects caused by high exposure to blue light. In this monitor's panel, the ratio of light is reduced by nearly 50%, while the SoftBlue LED technology works simultaneously by reducing harmful blue light rays emitted from the screen. Not to mention, the SoftBlue LED technology is tested and certified by TÜV Rheinland Eyesafe for its effectiveness in reducing blue light emissions.

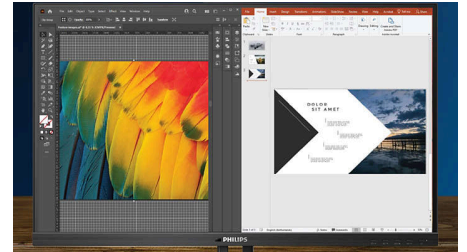
Flicker-Free technology



Due to the way brightness is controlled on LED-backlit screens, some users experience flicker on their screen which causes eye fatigue. Philips

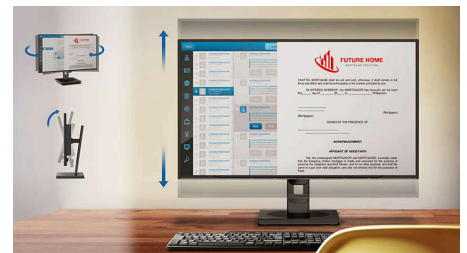
Flicker-Free technology applies a new solution to regulate brightness and reduce flicker for more comfortable viewing.

MultiView technology



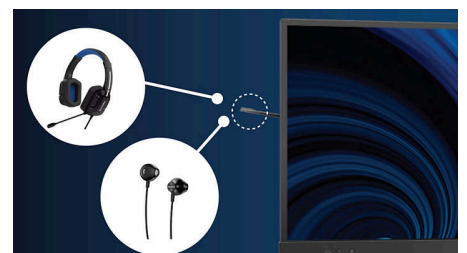
With the ultra-high resolution Philips MultiView display, you can now experience a world of connectivity. MultiView enables active dual connect and view so that you can work with multiple devices like a PC and notebook simultaneously, for complex multitasking.

Compact Ergo Base



The Compact Ergo Base is a people-friendly Philips monitor base that tilts, swivels and height-adjusts so each user can position the monitor for maximum viewing comfort and efficiency.

Earphone Hook

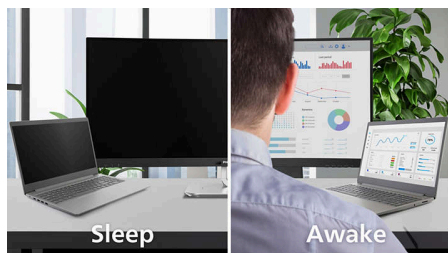


Earphone storage is unmatched with this feature. Carefully pull down the hook located on the side of the monitor: This feature makes for a tidy desktop and provides a handy cable management solution for your workspace.



Highlights

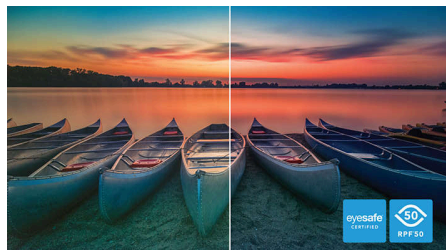
PowerSensor 2



This monitor's PowerSensor 2 feature reduces energy consumption by detecting when users move closer and further away from the screen. After switching the OSD setting to "User", you then need to adjust the settings in Windows 11 for this feature to function properly. When these adjustments are made, the monitor and connected PC/laptop will wake when someone approaches it and sleep when someone walks away, effectively reducing the amount of wake

time. The distance for detection can be set to 50, 75 or 120 cm from the user's laptop. Please note that Windows 11 must be installed.

TUV Rheinland Eyesafe



Philips display meets the TUV Rheinland Eyesafe® standard to truly protect you from long exposure to blue light. The always-on blue light filter not only helps reduce digital eye strain, but also guarantees colour integrity.

Thunderbolt™ 4 for flexibility and performance



This Philips docking monitor is equipped with Thunderbolt 4 connection. Compared with conventional USB-C monitors, Thunderbolt 4 technology provides lightning-fast data transfer speeds, supports high-resolution video, offers multi-stream transport for daisy chaining and has a capacity of up to 100 W of power delivery to external devices.



Specifications

Picture/Display

Panel Size: 27 inch/68.5 cm
Aspect ratio: 16:9
LCD panel type: IPS technology
Backlight type: W-LED system
Pixel pitch: 0.1554 x 0.1554 mm
Brightness: 350 cd/m²
Display colours: 1.07B (10 bits)
Colour gamut (typical): sRGB 96%, NTSC 110%*
Contrast ratio (typical): 1000:1
SmartContrast: 50,000,000:1
Response time (typical): 4 ms (Grey to Grey)*
Viewing angle: 178° (H)/178° (V), @ C/R > 10
Picture enhancement: SmartImage
Maximum resolution: HDMI: 3840 x 2160@60 Hz (8 bits); DP1.4/TBT: 3840 x 2160@60 Hz (10 bits)*
Effective viewing area: 596.736 (H) x 335.664 (V) mm
Scanning Frequency: 30–140 kHz (H)/23–75 Hz (V)
sRGB
Delta E: <2
SoftBlue
Flicker-free
Pixel Density: 163 PPI
LowBlue Mode
Display Screen Coating: Anti-Glare, 3H, Haze 25%
SmartUniformity: 93–105%
EasyRead
Adaptive sync

Connectivity

Signal Input: HDMI 2.0 x 2, DisplayPort 1.4 x 1, Thunderbolt 4 x 1 (upstream, DP Alt mode, Data, PD up to 100 W)
Sync Input: Separate Sync, Sync on Green
Audio (In/Out): Audio out/Microphone in combo jack
RJ45: Ethernet LAN up to 2.5 G, Wake on LAN
HDCP: HDCP 1.4 (HDMI/DisplayPort/Thunderbolt 4), HDCP 2.2 (HDMI/DisplayPort/Thunderbolt 4)
HBR3: HBR 3 (DisplayPort/Thunderbolt 4)
USB Hub: USB 3.2, Gen2, 10 G; Upstream: 1 x Thunderbolt 4, 1 x USB-C1 (data); Downstream: 1 x Thunderbolt 4, USB-A x 4 (with x 1 fast charge B.C 1.2), USB-C2 x 1 (data, 15 W)

Power Delivery

Max power delivery: Thunderbolt™ 4 (input): up to 96 W (5V/3A, 7V/3A, 9V/3A, 10V/3A, 12V/3A, 15V/3A, 20V/4.8A)*
Version: USB PD version 3.0

Convenience

Built-in Speakers: 3 W x 2
Plug and Play Compatibility: DDC/CI, Mac OS X, sRGB, Windows 11/10
User convenience: SmartImage, Input, User, Menu, Power On/Off, Mute, Handup, Busylight
OSD Languages: Brazil Portuguese, Czech, Dutch, English, French, Finnish, German, Greek, Hungarian, Italian, Japanese, Korean, Portuguese, Polish, Russian, Simplified Chinese, Spanish, Swedish, Traditional Chinese, Turkish, Ukrainian
Other convenience: Kensington lock, VESA mount (100 x 100 mm), Earphone hook
Control software: SmartControl
MultiView: PIP/PBP mode, 2 x devices
KVM: Yes (Thunderbolt 4/USB-C1)
SmartKVM

Stand

Height adjustment: 150 mm
Swivel: -/+ 180 degree
Tilt: -5/30 degree

Power

ECO mode: 20.9 W (typ.)
Power supply: Built-in, 100–240 VAC, 50–60 Hz
Off mode: 0.40 W (typ.)
On mode: 28.6 W (typ.) (Energy Star test method)
Standby mode: 0.45 W (typ.)
Power LED indicator: Operation - White, Standby mode - White (flashing)
Energy Label Class: E

Dimensions

Packaging in mm (W x H x D): 780 x 480 x 161 mm
Product without stand (mm): 613 x 371 x 59 mm
Product with stand (max height): 613 x 544 x 230 mm

Weight

Product with packaging (kg): 10.19 kg
Product with stand (kg): 7.15 kg
Product without stand (kg): 5.10 kg

Operating conditions

Altitude: Operation: +12,000 ft (3658 m), Non-operation: +40,000 ft (12,192 m)
Temperature range (operation): 0°C to 40 °C
Relative humidity: 20%-80 %
Temperature range (storage): -20°C to 60 °C
MTBF (demonstrated): 70,000 hrs (excluded backlight)

Sustainability

Environmental and energy: Energy Star, EPEAT*, RoHS, PowerSensor 2*, LightSensor
Post-consumer recycled plastic: 85%
Recyclable packaging material: 100 %
Specific Substances: Mercury free, PVC/BFR free housing

Compliance and standards

Regulatory Approvals: CB, CE Mark, TUV/GS, TUV Ergo, TCO Certified, EAC, EAEU RoHS, UKCA, FCC, ICES-003, eyesafe® CERTIFIED 2.0, TÜV Rheinland Low Blue Light (Hardware Solution)

Cabinet

Finish: Texture
Foot: Silver
Front bezel: Charcoal
Rear cover: Charcoal

What's in the box?

Cables: HDMI cable, DisplayPort cable, TBT4 cable, Power cable
Monitor with stand
User Documentation



* "IPS" word mark / trademark and related patents on technologies belong to their respective owners.
* Response time value equal to SmartResponse
* sRGB Area based on CIE1931, NTSC Area based on CIE1976
* Please note that the maximum resolution is 3840 x 2160@60 Hz, 8 bits, when the daisy chain connects via Thunderbolt 4.
* Please note that the PowerSensor 2 is only functional with Windows 11 installed. When PowerSensor 2 is activated, WAL means Walk Away Lock and WOA means Wake On.
* The Thunderbolt port power delivery of this display is up to 100 W (96 W typically); the maximum power delivery will depend on your device.
* When calculating energy costs saving from PowerSensor, both USB and Power delivery are excluded.
* EPEAT rating is valid only where Philips registers the product. Please visit <https://www.epeat.net/> for registration status in your country.
* The monitor may look different from feature images.
* The products and accessories listed on this leaflet may differ by country and region.