

PHILIPS

Mouse

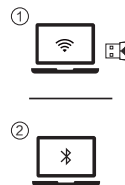
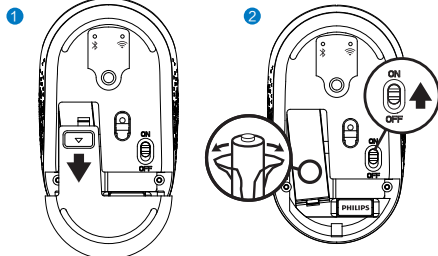
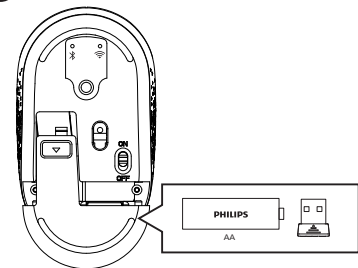
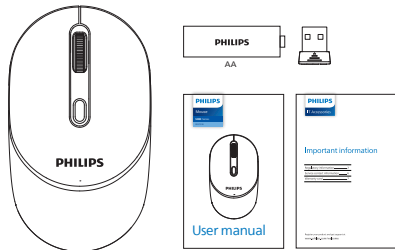
5000 Series

SPK7518

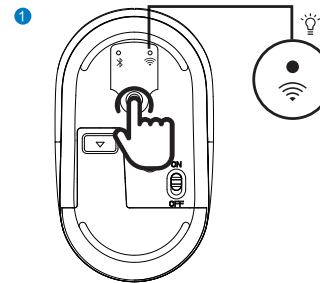


PHILIPS

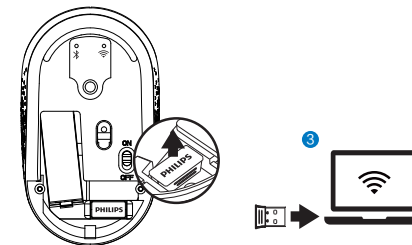
User manual



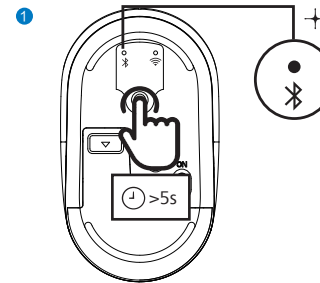
1 2.4GHz



2



2 Bluetooth



1



Bluetooth 3.0

2



Bluetooth 5.2



2024 © Top Victory Investments Limited . All rights reserved.

Philips and the Philips Shield Emblem are registered trademarks of Koninklijke Philips N.V. and are used under license.

This product has been manufactured by and is sold under the responsibility of Top Victory Investments Limited, and Top Victory Investments Limited is the warrantor in relation to this product.

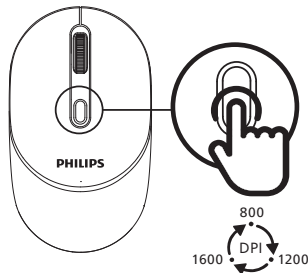
Specifications are subject to change without notice

Bluetooth

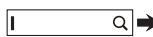
The Bluetooth word mark and logos are registered trademarks owned by Bluetooth SIG, Inc. and any use of such marks by MMD Hong Kong Holding Limited is under license. Other trademarks and trade names are those of their respective owners.

Made in China

Register your product and get support at: www.philips.com/welcome



www.philips.com/support



FAQ



User Manual



Important Information



User manual | English

Technical specifications

Connectivity: 2.4GHz / Bluetooth 3.0 / Bluetooth 5.2
Wireless Effective distance: 15m(2.4GHz) / 10m(Bluetooth)
Number of buttons: 5
Mouse buttons lifespan: 3 million keystrokes
Resolution: 800/1200/1600 DPI
Power supply: 1*AA Philips battery
Interface: USB wireless receiver
Product dimension: 104x60.2x38.6mm
Product weight: 59±5g
Operating temperature range: 0°C to 40°C
Operating humidity range: 10% - 85%.

System requirement

- 1.1*USB port
2. Bluetooth
3.Microsoft Windows 7, Windows 8, Windows 10 or later;
Android 3.2 and above; Mac OS 10.5 and above;

Register your product and get support at www.philips.com/welcome

Manual Pengguna | Bahasa Indonesia

Spesifikasi teknis

Konektivitas: 2.4GHz / Bluetooth 3.0 / Bluetooth 5.2
Jarak efektif nirkabel: 15m (2.4GHz) / 10m (Bluetooth)
Jumlah tombol: 5
Umur tombol mouse: 3 juta Keystrokes
Resolusi: 800/1200/1600 DPI
Sumber Daya listrik: 1*AA baterai Philips
Antarmuka: Penerima nirkabel USB
Dimensi produk: 104x60.2x38.6mm
Berat produk: 59±5g
Kisaran suhu pengoperasian: 0 ° C hingga 40 ° C
Kisaran kelembaban operasi: 10% - 85%.

Persyaratan sistem

- 1.1*saluran USB
2. Bluetooth
3.Microsoft Windows 7, Windows 8, Windows 10 atau lebih baru;
Android 3.2 ke atas; Mac OS 10.5 ke atas;

Daftarkan produk Anda dan dapatkan dukungan di www.philips.com/welcome

사용 설명서 | 한국어

기술 사양

연결성 : 2.4GHz / 블루투스 3.0 / 블루투스 5.2
무선 유효 거리 : 15m (2.4GHz) / 10m(블루투스)
버튼 수 : 5
마우스 버튼 수명 : 300만 개 키
해상도 : 800/1200/1600 DPI
전원 공급 장치 : 1 * AA 필립스 배터리
인터페이스 : USB 무선 수신기
제품 크기 : 104x60.2x38.6mm
제품 무게 : 59±5g
작동 온도 범위 : 0 ° C - 40 ° C
작동 습도 범위 : 10% - 85%.

시스템 요구 사항

- 1.1*USB 포트
2. 블루투스
3.마이크로소프트 윈도우 7, 윈도우 8, 윈도우 10 이상;
Android 3.2 이상; Mac OS 10.5 이상;

Philips 공식 웹 사이트에 로그인하여 제품을 등록하고 지원을 받으십시오: www.philips.com/welcome

ユーザーマニュアル | 日本語

技術仕様

接続性:2.4GHz / Bluetooth 3.0 / Bluetooth 5.2
無線有効距離:15m(2.4GHz) / 10m(Bluetooth)
ボタン数:5
マウスボタンの寿命:300万回 キーストローク
解像度:800/1200/1600 DPI
電源:1 * AAフリップスバッテリー
インターフェース:USBワイヤレスレシーバー
製品寸法:104x60.2x38.6mm
製品重量:59±5g
動作温度範囲:0°C~40°C
動作湿度範囲:10%~85%.

システム要件

- 1.1 * USBポート
2. Bluetooth
3.Microsoft Windows 7, Windows 8, Windows 10以降,
Android 3.2以降, Mac OS 10.5以降.

Philipsの公式サイトにログインして製品を登録し、サポートを受けてください: www.philips.com/welcome

使用説明書 | 繁體中文

技術規格

無線技術 : 2.4GHz / 藍牙3.0 / 藍牙5.2
無線有效距離 : 約15m(2.4G無線)/10m(藍牙)
滑鼠按鍵數 : 5
滑鼠按鍵壽命 : 300萬次
感測器解析度 : 800/1200/1600 DPI
電池類型 : 1節AA鹼性電池
介面 : USB 無線接收器
產品尺寸 : 104x60.2x38.6mm
產品重量 : 59±5g
運行時的溫度範圍 : 0°C - 40°C
運行時的溫度範圍 : 10% - 85%.

系統要求

- 1.1*USB 埠
2. 藍牙
3.Windows 7, Windows 8, Windows 10或更高版本;
Android 3.2或更高版本; Mac OS 10.5 或更高版本;

請登入Philips官網註冊您的產品並獲取支援 : www.philips.com/welcome