



Philips 5000 Series  
Smart safe box

Immersive digital keypad

Fire-resistant material  
Intelligent control system  
Abnormal alerts

SBX501C4P0

# Elevate your home fire safety

With advanced technology

Redefining with a handle-less design and automatic door opening. The immersive digital keypad awakens upon a touch. Crafted from low-carbon alloy steel and advanced fire-resistant materials, SBX501 ensures both fire protection and security.

## Intelligent unlocking for enhanced security

- For added convenience
- Give hands-free door opening experience
- For enhanced security
- Offer double security
- Effectively against peeping

## Craftsmanship quality for safety you can trust

- Provide sleek and unified aesthetics
- Protect valuables from fire risks
- Offer comprehensive protection
- Responsive at simple touch and brings elegance

## Thoughtful details to safeguard your private space

- For flexible organization
- To avoid vulnerable points
- Offer daily peace of mind

# PHILIPS

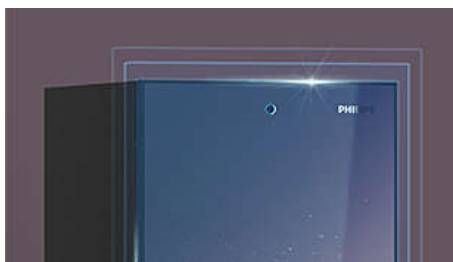
# Highlights

## Multiple unlocking options



With an immersive digital panel that activates at your fingertips, the safe employs semiconductor fingerprint technology for precise verification, enabling one-touch unlocking. For added convenience, it also includes a mechanical key design, ensuring a smooth and worry-free unlocking experience.

## Integrated door panel



The innovative handle-less door panel design of the fire-resistant safe demonstrates exceptional craftsmanship. Internally, it is made from robust low-carbon alloy steel plates and proprietary fire-resistant materials. The door surface is sleek, shiny, and adorned with vibrant colors, striking a perfect balance between safety, fire resistance, and aesthetics.

## Layered storage



The safe's capacious interior offers abundant space for securely storing a wide range of valuables. Adjustable shelving facilitates the storage of larger items, catering to your adaptable storage needs.

## Advanced materials



The fire-resistant materials utilize composite fire-resistant layers and high-polymer engineering materials, conforming to the UL350-2HR fire certification standard. Even when subjected to a continuous 2-hour burn at a high temperature of 1010C, the interior temperature remains below 177C, guaranteeing the preservation of paper documents and records.

## Electronic door open control



Transitioning from manual to automatic, the safe opens effortlessly. With the correct password, the locking bolts automatically release, and upon closing, it locks automatically. The handle-less design simplifies operations, freeing your hands.

## Four-sided locking bolts



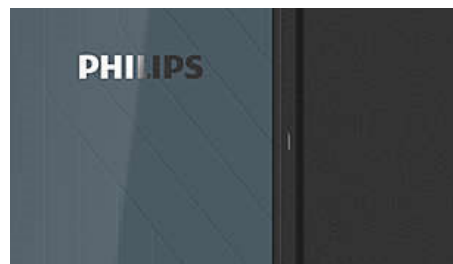
The safe door is fortified with solid stainless steel lock bolts that engage all four sides, providing thorough protection and greatly elevating security levels against tampering and intrusion.

## Ground locking mechanism



At the bottom, there equips a ground locking mechanism, allowing you to securely anchor safe to the floor. This reduces the possibility of the safe being pried open or moved, enhancing the physical security and anti-theft properties of this fireproof safe.

## Concealed hinges



The hinges are concealed within the safe, rendering them inaccessible from the exterior. This design significantly enhances theft protection, steadfastly guarding your treasures.

## Abnormal alerts



SBX501 comes with several alert functions, including error alerts, low-battery alerts, and door left open alerts. In case of unusual circumstances, a high-pitched alarm will activate, providing round-the-clock protection for your assets.

# Specifications

## Color scheme

- Purple

## Power supply

- Battery life\*: 6-12 months
- Working voltage: 4.5 ~ 6 V
- Battery for backup system: 4 pieces AA battery

## Net weight of product

- 54.0 kg

## Dimensions of product (LxWxH)

- 450.8×370×511.9 mm

## Unlocking methods

- Fingerprint: maximum 30 sets
- PIN code: maximum 10 sets
- Mechanical key

## Indicator lights

- Blue: normal working
- Green: recognition succeeded
- Red: recognition failed



Issue date 2024-08-21

Version: 2.2.1

EAN: 69 73746 14150 1

© 2024 Koninklijke Philips N.V.  
All Rights reserved.

Specifications are subject to change without notice.  
Trademarks are the property of Koninklijke Philips N.V.  
or their respective owners.

[www.philips.com](http://www.philips.com)

\* \*The battery life (stand-by time) depends on the actual usage.  
\* \*All thicknesses are the maximum thickness.  
\* \*Fire Rating: UL350-2HR