

# PHILIPS

Micro Music System

3000 Series

TAM3505M2



## User manual

Register your product and get support at:  
[www.philips.com/support](http://www.philips.com/support)

# Contents

<b>1</b>	<b>Important</b>	<b>2</b>	<b>7</b>	<b>Other features</b>	<b>17</b>
	Safety	2		Set the alarm timer	17
	Notice	3		Set the sleep timer	18
	Declaration of conformity	3		Listen to an external device	18
	Trademarks	4		Factory reset	18
<b>2</b>	<b>Your Micro Music System</b>	<b>4</b>	<b>8</b>	<b>Philips Entertainment App</b>	<b>19</b>
	What's in the box	4		App download	19
	Overview of the main unit	6		Choose your sound	20
	Overview of the remote control	7		Select source	20
<b>3</b>	<b>Get started</b>	<b>9</b>		Clock setting	23
	Connect speakers	9		User guide	24
	Connect the radio antenna	9		Firmware upgrade	25
	Connect power	9	<b>9</b>	<b>Product information</b>	<b>26</b>
	Prepare the remote control	10		USB playability information	26
	Power on	10		Supported MP3 disc formats	27
	Set the clock	10	<b>10</b>	<b>Troubleshooting</b>	<b>28</b>
<b>4</b>	<b>Play</b>	<b>11</b>			
	Play from disc	11			
	Play from USB	11			
	Control play	11			
	Skip tracks	12			
	Program tracks	12			
	Play from Bluetooth-enabled devices	12			
	Play from Auracast	13			
<b>5</b>	<b>Listen to the radio</b>	<b>15</b>			
	Listen to DAB+ radio	15			
	Listen to FM radio	16			
<b>6</b>	<b>Adjust sound</b>	<b>17</b>			
	Adjust volume level	17			
	Mute sound	17			

# 1 Important

## Safety

Read and understand all instructions before you use this micro music system. If damage is caused by failure to follow the instructions, the warranty does not apply.



This 'bolt of lightning' indicates uninsulated material within the device may cause an electrical shock. For the safety of everyone in your household, please do not remove the covering. The 'exclamation mark' calls attention to features for which you should read the enclosed literature closely to prevent operating and maintenance problems. **WARNING:** To reduce the risk of fire or electric shock, the device should not be exposed to rain or moisture and objects filled with liquids, such as vases, should not be placed on the device. **CAUTION:** To prevent electric shock, fully insert the plug. (For regions with polarized plugs: To prevent electric shock, match wide blade to wide slot.)

## Warning

- Never remove the casing of this apparatus.
  - Never lubricate any part of this apparatus.
  - Never look into the laser beam inside this apparatus.
  - Never place this apparatus on other electrical equipment.
  - Keep this apparatus away from direct sunlight, naked flames or heat.
  - Ensure that you always have easy access to the power cord, plug or adaptor to disconnect the apparatus from the power
- 
- Make sure that there is enough free space around the product for ventilation.
  - Only use attachments/accessories specified by the manufacturer.
  - Battery usage **CAUTION** -to prevent battery leakage which may result in bodily injury, property damage, or damage to the product:
    - Install the battery correctly, + and - as marked on the product.
    - The battery (packed or installed) shall not be exposed to excessive heat such as sunshine, fire or the like.
    - Remove the battery when the product is not used for a long time.
  - The product shall not be exposed to dripping or splashing.
  - Do not place any source of danger on the product (e.g. liquid filled objects, lit candles).
  - Where the MAINS plug or an appliance coupler is used as the disconnect device, the disconnect device shall remain readily operable.
  - Please use the product safely in an environment with temperature between 0°C and 45°C.

---

## Notice

Any changes or modifications made to this device that are not expressly approved by MMD Hong Kong Holding Limited may void the user's authority to operate the equipment.

---

## Compliance

Hereby, TP Vision Europe B.V. declares that this product is in compliance with the essential requirements and other relevant provisions of Directive 2014/53/EU. You can find the Declaration of Conformity on [www.philips.com/support](http://www.philips.com/support).

---

## Care of the environment

### Disposal of your old product and battery



Your product is designed and manufactured with high quality materials and components, which can be recycled and reused.



This symbol on a product means that the product is covered by European Directive 2012/19/EU.



This symbol means that the product contains batteries covered by European Regulation (EU) 2023/1542 which cannot be disposed of with normal household waste.

Inform yourself about the local separate collection system for electrical and electronic products and batteries. Follow local rules and never dispose of the product and batteries with normal household waste. Correct disposal of old products and batteries helps prevent negative consequences for the environment and human health.

### Removing the disposable batteries

To remove the disposable batteries, see battery installation section.

### Environmental information

All unnecessary packaging has been omitted.

Your system consists of materials which can be recycled and reused if disassembled by a specialized company. Please observe the local regulations regarding the disposal of packaging materials, exhausted batteries and old equipment.

---

## Care for your product

- Do not insert any objects other than discs into the disc compartment.
- Do not insert warped or cracked discs into the disc compartment.
- Remove the discs from the disc compartment if you are not using the product for an extended period of time.
- Only use microfiber cloth to clean the product.

### This apparatus includes this label:



#### Note

- The type plate is located on the back of the product.

---

## Trademarks

### AURACAST

The Auracast™ word mark and logos are trademarks owned by Bluetooth SIG, Inc. and any use of such marks by MMD Hong Kong Holding Limited is under license. Other trademarks and trade names are those of their respective owners.

### Bluetooth®

The Bluetooth® word mark and logos are registered trademarks owned by Bluetooth SIG, Inc. and any use of such marks by MMD Hong Kong Holding Limited is under license.

 Be responsible  
Respect copyrights

The making of unauthorized copies of copy-protected material, including computer programs, files, broadcasts and sound recordings, may be an infringement of copyrights and constitute a criminal offence. This equipment should not be used for such purposes.

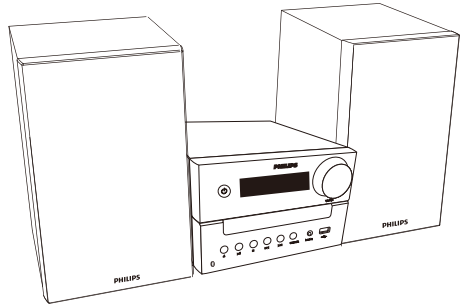
## 2 Your Micro Music System

Congratulations on your purchase, and welcome to Philips! To fully benefit from the support that Philips offers, register your product at [www.philips.com/support](http://www.philips.com/support).

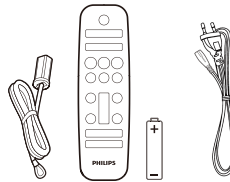
---

### What's in the box

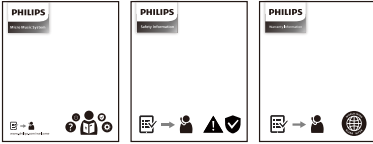
Check and identify the contents of your package:



- Main unit
- Speaker boxes (x2)

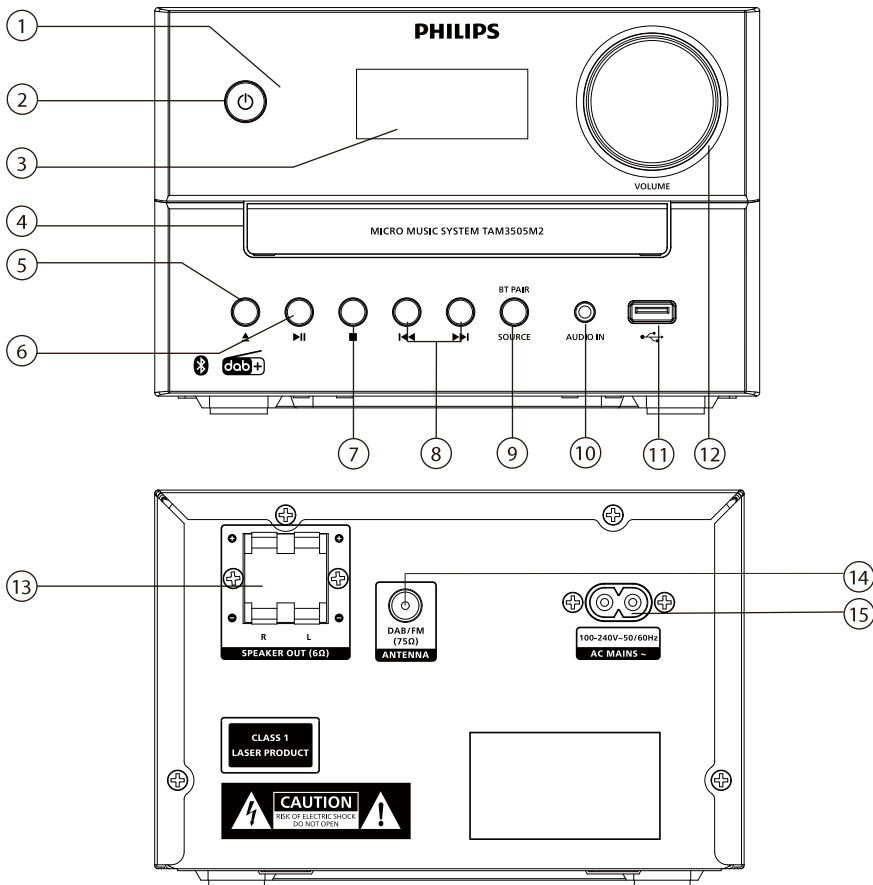


- FM antenna
- Remote control (with one AAA battery)
- Power cord (Power cord quantity and plug type vary by regions)



- Quick start guide / Warranty card / Safety sheet
- Images, illustrations and drawings shown on this user manual are for reference only, actual product may vary in appearance.

# Overview of the main unit



## ① LED indicator

- Standby indicator: turns red when this product is switched to standby.
- Bluetooth/Auracast indicator: turns blue to indicate the Bluetooth/Auracast connection status.

## ②

- Switch this product on or to standby.

## ③ Display panel

- Show current status.

## ④ Disc compartment

- ### ⑤
- Open or close the disc compartment.

### ⑥

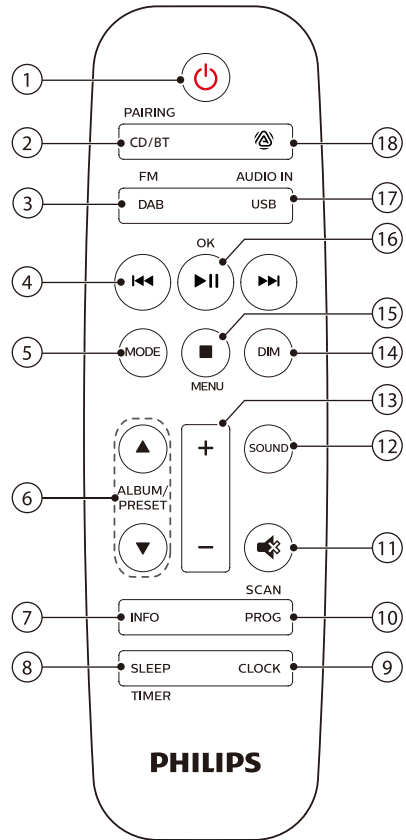
- Start or pause play.

### ⑦

- Stop play.
- Erase a program.

- ⑧ **⏮ / ⏭**
  - Skip to previous/next track.
  - Search within a track/disc.
  - Tune to a radio station.
  - Adjust time.
- ⑨ **SOURCE/BT PAIR**
  - Press to select a source: DISC, BT, AURACAST, DAB, FM, USB, AUDIO IN.
  - In Bluetooth mode, press and hold for more than 2 seconds to disconnect the currently connected device and enter pairing mode.
- ⑩ **AUDIO IN**
  - Connect external audio devices.
- ⑪ **🔌**
  - Connect USB storage devices.
- ⑫ **Volume knob**
  - Adjust volume.
- ⑬ **SPEAKER OUT socket**
  - Connect with the speakers.
- ⑭ **FM/DAB+ antenna**
  - Improve FM/DAB+ reception.
- ⑮ **AC MAINS ~**

## Overview of the remote control



- ① **🔌**
  - Switch this product on or to standby.
- ② **CD/BT PAIRING**
  - Select CD source.
  - Select Bluetooth source.
  - In Bluetooth mode, press and hold for more than 2 seconds to or disconnect the current connected device.



③ **DAB/FM**

- Select FM or DAB+ source.

④ **⏮ / ⏭**

- Skip to the previous/next track.
- Search within a track/disc/USB.
- Tune to an FM station.
- Adjust time.
- Select a DAB+ station.

⑤ **MODE**

- Select shuffle mode to play tracks randomly.
- Select repeat mode to play a track or all tracks repeatedly.
- Select Stereo and Mono sound

⑥ **ALBUM/PRESET ▲ / ▼**

- Select a preset radio station.
- Skip to previous/next album.

⑦ **INFO**

- Display playback information, or radio service information.

⑧ **SLEEP/TIMER**

- Set sleep timer.
- Set alarm timer.

⑨ **CLOCK**

- Set the clock.
- View clock information.
- In standby, press and hold to toggle clock display on or off.

⑩ **PROG/SCAN**

- Program tracks.
- Program radio stations.
- Auto store radio stations.

⑪ **🔇**

- Mute or restore volume.

⑫ **SOUND**

- Select a preset sound effect.

⑬ **+/- (volume)**

- Adjust volume.

⑭ **DIM**

- Adjust display brightness.

⑮ **■ /MENU**

- Stop play or erase a program.
- Enter or exit DAB+ menu.

⑯ **▶ || /OK**

- Press to start, pause, or resume play.
- Confirm or select a DAB+ item.

⑰ **USB/AUDIO IN**

- Select USB source.
- Select AUDIO IN source.

⑱ **📶**

- Select Auracast source.

## 3 Get started

### ! Caution

- Use of controls or adjustments or performance of procedures other than herein may result in hazardous radiation exposure or other unsafe operation.

Always follow the instructions in this chapter in sequence.

## Connect speakers

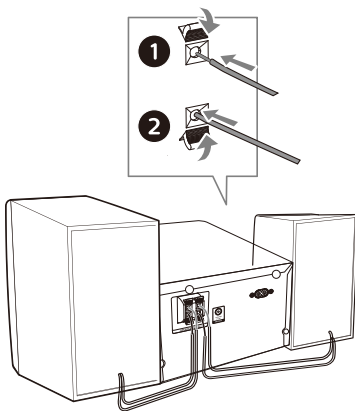
### ≡ Note

- Insert the stripped portion of each speaker wire into the socket completely.
- For better sound quality, use the supplied speakers only.

- 1 Connecting one speaker, find the sockets on the back of the main unit marked "R".
- 2 Insert the copper wire into the socket marked "+", and the silver wire into the socket marked "-".
- 3 Connecting another speaker, find the sockets on the main unit marked "L".
- 4 Repeat step 2 to insert the left speaker wire.

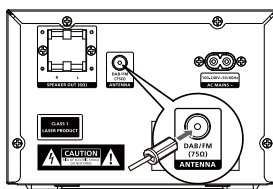
### To insert each speaker wire:

- 1 Hold down the socket flap.
- 2 Insert the speaker wire fully.
- 3 Release the socket flap.



## Connect the radio antenna

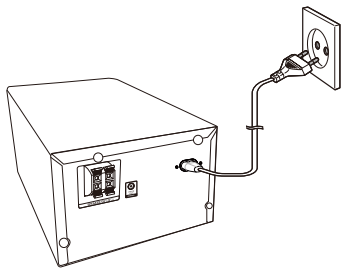
Connect the supplied radio antenna to this product before listening to radio.



## Connect power

### ! Caution

- Risk of product damage! Ensure that the power supply voltage corresponds to the voltage printed on the back or the underside of the unit.
- Risk of electric shock! Before you plug the AC power cord, make sure that the plug is fixed securely. When you unplug the AC power cord, always pull the plug, never pull the cord.
- Before you connect the AC power cord, make sure that you have completed all the other connections



Connect the power cord to the wall socket.

## Prepare the remote control

### ! Caution

- Risk of product damage! When the remote control is not used for long periods, remove the batteries.
- Batteries contain chemical substances, so they should be disposed of properly.

### To insert the remote control battery:

- 1 Open the battery compartment.
- 2 Insert the supplied AAA battery with correct polarities (+/-) as indicated.
- 3 Close the battery compartment.



## Power on

Press **⏻**.

- ↳ The product switches to the last selected source.

## Switch to standby mode

Press **⏻** again to switch the product to standby with no clock display, or to standby with clock display.

↳ The red standby indicator lights up.

- In standby, you may press and hold **CLOCK** to toggle clock display on or off.

### ☰ Note

- The product switches to standby mode after 15 minutes of inactivity.
- To achieve the efficient energy saving performance, unplug any external electronic device from the USB port when the device is not in use.

## Set the clock

- 1 In power on mode, press and hold **CLOCK** for more than 2 seconds to enter the clock setting mode.  
↳ **[24H]** or **[12H]** is displayed.
- 2 Press **⏪/⏩** to select 24H or 12H hour format, and then press **CLOCK**.  
↳ The hour digits begin to blink.
- 3 Press **⏪/⏩** to set the hour, and then press **CLOCK**.  
↳ The minute digits begin to blink.
- 4 Press **⏪/⏩** to set the minute, and then press **CLOCK**.  
↳ The clock is set.

### To cancel time setting and without saving

Press **■** or no button pressed for 30sec.

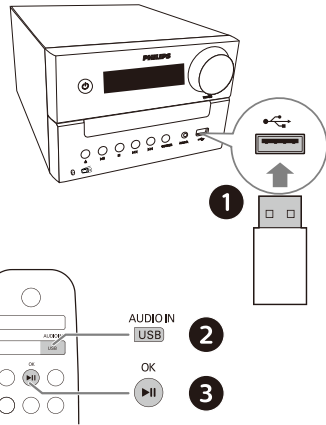
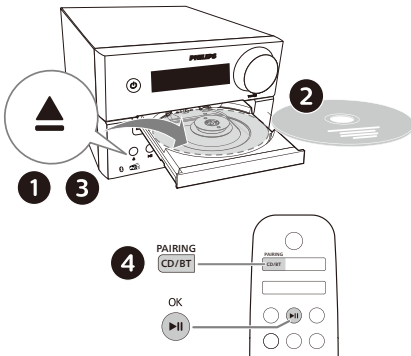
### ✳ Tip

- To view clock in power on mode, press **CLOCK** briefly.
- In standby, you may press and hold **CLOCK** to toggle clock display on or off.
- If clock display is turned on in standby, power consumption increases.

## 4 Play

### Play from disc

- 1 Press **CD** to select CD source, or press source button on main unit to switch to DISC source.
- 2 Press **▲** to open the disc compartment.
- 3 Insert a disc with the label side up.
- 4 Press **▲** to close the disc compartment.  
↳ Play starts automatically. If not, press **▶||**.



### Control play

<b>▶  </b>	Start, pause, or resume play.
<b>■</b>	Stop play.
<b>▲ / ▼</b>	Select an album or a folder.
<b>◀◀ / ▶▶</b>	Press to skip to the previous or next track. Press and hold to search backward/forward within a track.
<b>MODE</b>	Play a track or all tracks repeatedly. Play tracks randomly.
<b>+/-</b>	Increase or decrease the volume.
<b>🔊</b>	Mute or unmute sound.
<b>SOUND</b>	Select a preset sound equalizer.
<b>DIM</b>	Adjust display brightness.
<b>INFO</b>	Show playback information.

### Play from USB

#### Note

- Make sure that the USB device contains playable audio content.

- 1 Insert a USB device into the socket.
- 2 Press **AUDIO IN/USB** repeatedly to select the USB source, or press source button on main unit to switch to USB source.
- 3 Play starts automatically. If not, press **▶||**.

## Skip tracks

**For CD:**

Press **⏮** / **⏭** to select tracks.

**For MP3 disc and USB:**

- 1 Press **▲** / **▼** to select an album or a folder.
- 2 Press **⏮** / **⏭** to select a track or a file.

## Program tracks

This function allows you to program 20 tracks in the desired sequence.

- 1 In stop mode, press **PROG/SCAN** to activate the program mode.  
↳ **[P01]** is displayed.
- 2 For MP3 tracks, press **▲** / **▼** to select an album.
- 3 Press **⏮** / **⏭** to select a track, and then press **PROG/SCAN** to confirm.
- 4 Repeat steps 2 to 3 to program more tracks.
- 5 Press **▶||** to play the programmed tracks.

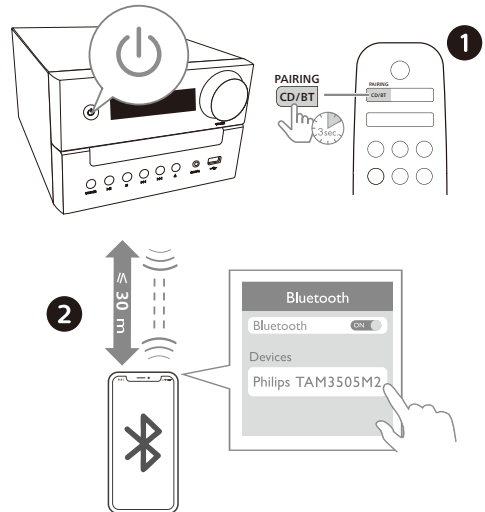
**To erase the program**

Press **■** twice.

## Play from Bluetooth-enabled devices

### Note

- Compatibility with all Bluetooth devices is not guaranteed.
- Any obstacle between the unit and the device can reduce the operational range.
- The effective operation range between this unit and your Bluetooth enabled device is approximately 30 meters.
- The unit can memorize up to 8 previously connected Bluetooth devices.



- 1 Press **CD/BT** to select the Bluetooth source, or press source button on main unit to switch to BT source.  
↳ **[BT]** (Bluetooth) is displayed.  
↳ The Bluetooth indicator blinks blue.
- 2 On your device that supports Advanced Audio Distribution Profile (A2DP), enable Bluetooth and search for Bluetooth devices that can be paired (refer to the user manual of the device).

- 3 Select '**Philips TAM3505M2**' on your Bluetooth enabled device.
  - If you fail to find '**Philips TAM3505M2**' or cannot pair with this product, press and hold **BT PAIR** on the product or **PAIRING** on the remote control for 2 seconds to enter pairing mode.

↳ After successful pairing and connection, the Bluetooth indicator turns solid blue, and you will hear the prompt sound from the unit.
- 4 Play audio on the connected device.
 

↳ Audio streams from your Bluetooth enabled device to this product.


#### To disconnect the Bluetooth-enabled device:

- Deactivate Bluetooth on your device.
- Press and hold **BT PAIR** on the product or **PAIRING** on the remote control for 2 seconds to enter pairing mode.

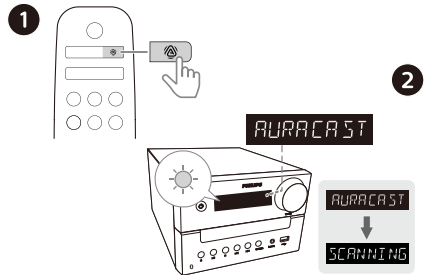
---

## Play from Auracast

You can broadcast your music to this product or any other Auracast-compatible products.

- 1 Press  to select the Auracast source, or press source button on main unit to switch to Auracast source.
  - **[AURACAST RCV]** is displayed.
  - The blue indicator blinks.
- 2 If you enter Auracast source for the first time or if the station list is empty, the product performs a full scan automatically.

- **[Scanning]** is displayed.
- The micro system will automatically search for nearby Auracast broadcasts and connect to the unencrypted broadcast with the strongest signal.



- 3 On your mobile device or dongle that supports Auracast, follow the instruction to enable Auracast broadcast.
- 4 After successful connection, the blue indicator turns solid and you will hear the prompt sound from the micro system.
- 5 Auracast source name is displayed.
- 6 Select and play audio from your Auracast enabled mobile device or dongle to this product.
- 7 Follow the Auracast connection on any additional Auracast-compatible products you want to include.

#### To disconnect Auracast, you can:

- Switch the product to another source.
- Deactivate Auracast broadcast on your mobile device or dongle.

---

## Manually scan Auracast broadcast

Press and hold **PROG/SCAN** for more than 3 seconds. The micro system scans all nearby Auracast broadcasts. After scan, the strongest signal Auracast is broadcast.

---

## Select Auracast broadcast

Press **◀◀ / ▶▶** to select an Auracast broadcast.



### Note

- Only unencrypted broadcast is selected and encrypted broadcast is skipped.

## 5 Listen to the radio

With this product, you can listen to DAB+ radio and FM radio.



### Note

- Position the FM antenna as far as possible from TV, or other radiation source.
- For optimal reception, fully extend and adjust the position of the FM antenna.

## Listen to DAB+ radio

Digital Audio Broadcasting+ (DAB+) is a way of broadcasting radio digitally through a network of transmitters. It provides you with more choice, better sound quality and more information.

## Store DAB+ radio stations automatically



### Note

- New stations and services are added in DAB+ broadcast from time to time. To make new DAB+ stations and services available, perform scan regularly.

- 1 Press **DAB/FM** repeatedly to select DAB+ source.
  - If you enter DAB+ source for the first time or if the station list is empty, the radio performs a full scan automatically.
    - ↳ [Scanning] is displayed.
    - ↳ The radio scans and stores all the DAB+ radio stations automatically, and then broadcasts the first available station.

- 2 Press and hold **PROG/SCAN** for more than 2 seconds.
  - ↳ The product scans and stores all DAB+ radio stations automatically.
  - ↳ After scan, the first available station is broadcast.

## Select a DAB+ radio station

After DAB+ radio stations are scanned and stored, press **◀◀/▶▶** to select a DAB+ station.

## Store DAB+ radio stations manually

- 1 Press **◀◀/▶▶** to select a DAB+ radio station.
- 2 Press **PROG/SCAN** to activate program mode.
  - ↳ **[P01]** is displayed.
- 3 Press **▲/▼** to allocate a number from 1-10 to this radio station, and then press **PROG/SCAN** to confirm.
- 4 Repeat steps 1-3 to program more stations.

**To select a preset DAB+ radio station:**  
In DAB+ mode, press **▲/▼**.

## Use DAB+ menu

- 1 In DAB+ mode, press **■/MENU** to access DAB+ menu.
- 2 Press **◀◀/▶▶** to toggle the menu options.
  - **[SCAN]:** Scan and store all available DAB+ radio stations.
  - **[MANUAL]:** Tune to a DAB+ station manually.
  - **[DRC]:** Compress the dynamic range of a radio signal, so that the volume of quiet sounds is increased, and the volume of loud sounds is reduced.



- **[PRUNE]**: Remove invalid stations from the station list.
- **[SYSTEM]**: Adjust system settings.

- 3 To select an option, press ► **II/OK**.
- 4 If sub-option is available, repeat steps 2-3.

---

## Display DAB+ information

While listening to DAB+ radio, press **INFO** repeatedly to display various information (if available), such as frequency, signal strength, time, etc.

---

## Listen to FM radio

---

### Tune to an FM radio station

- 1 Press **DAB/FM** repeatedly to select FM source.
- 2 Press and hold **◀◀/▶▶** for more than two seconds
  - ↳ The radio tunes to a station with strong reception automatically.
- 3 Repeat step 2 to tune to more stations

#### To tune to a weak station:

Press **◀◀/▶▶** repeatedly until you find optimal reception.

---

## Store FM radio stations automatically



#### Note

- You can store a maximum of 20 FM radio stations.

- 1 Press **DAB/FM** repeatedly to select FM source.
- 2 Press and hold **PROG/SCAN** for more than two seconds.

- ↳ All available stations are programmed in the order of waveband reception strength.
- ↳ The first programmed radio station is broadcast automatically.

---

## Store FM radio stations manually

- 1 Tune to an FM radio station.
- 2 Press **PROG/SCAN** to activate program mode.
  - ↳ **[P01]** is displayed.
- 3 Press **▲/▼** to allocate a number from 1-10 to this radio station, and then press **PROG/SCAN** to confirm.
- 4 Repeat steps 1-3 to program more stations.



#### Note

- To overwrite a programmed station, store another station in its place.

---

## Select a preset FM radio station

In FM mode, press **▲/▼** to select a preset number.

- While listening to FM radio, you may press **MODE** to toggle stereo and mono sound.

---

## Display RDS information

RDS (Radio Data System) is a service that allows FM stations to show additional information.

- 1 Tune to an FM radio station.
- 2 Press **INFO** repeatedly to display various RDS information (if available), such as station name, program type, time, etc.

## 6 Adjust sound

The following operations are applicable to all supported media.

---

### Select a preset sound effect

- Press **SOUND** repeatedly to select a preset sound effect.


---

### Adjust volume level

- On the remote control, press **VOLUME +/-** repeatedly.
- On the main unit, rotate the volume knob.

---

### Mute sound

- Press  to mute or unmute the sound.

## 7 Other features

---

### Set the alarm timer

This product can be used as an alarm clock. You can select the disc, radio, or .mp3 files on a USB storage device as alarm source.



#### Note

- Alarm timer is not available in AUDIO IN mode.
- If CD/USB source is selected, but no disc is placed or no USB device is connected, the radio source is selected automatically.

- 1 Make sure that you have set the clock.
- 2 In standby mode, press and hold **SLEEP/TIMER** for more than 2 seconds.
  - ↳ The hour digits blink.
- 3 Press **◀◀/▶▶** repeatedly to set the hour, and then press **SLEEP/TIMER** to confirm.
  - ↳ The minute digits blink.
- 4 Press **◀◀/▶▶** to set the minute, and then press **SLEEP/TIMER** to confirm.
  - ↳ The last selected alarm source blinks.
- 5 Press **◀◀/▶▶** to select an alarm source (disc, USB, FM or DAB+ radio), and then press **SLEEP/TIMER** to confirm.
  - ↳ **XX** blinks (XX indicates the volume level of alarm).
- 6 Press **◀◀/▶▶** to set the alarm volume, and then press **SLEEP/TIMER** to confirm.

---

## Activate/deactivate alarm timer

In standby mode, press **SLEEP/TIMER** repeatedly to activate or deactivate timer.

- ↳ If timer is activated, **TIMER** is displayed.
- In standby, you may press and hold **CLOCK** to toggle clock display on or off.

---

## Set the sleep timer

This music system can switch to standby automatically after a set period of time.

- When the music system is turned on, press **SLEEP/TIMER** repeatedly to select a set period of time (in minutes)
  - ↳ When sleep timer is activated, **SLEEP** is displayed.

### To deactivate sleep timer

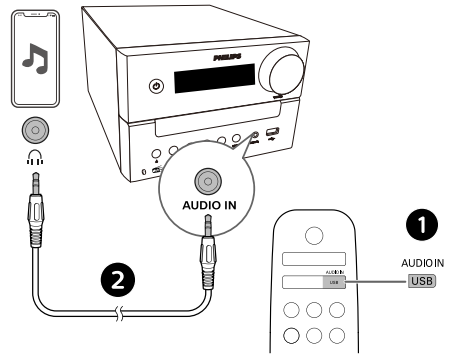
- Press **SLEEP/TIMER** repeatedly until **[OFF]** (sleep off) is displayed.
  - ↳ When sleep timer is deactivated, **SLEEP** disappears.

---

## Listen to an external device

You can listen to an external device through this unit with an MP3 link cable.

- 1** Connect an MP3 link cable (not supplied) between:
  - **AUDIO IN** jack (3.5 mm) on the product,
  - and the headphone jack on an external device.
- 2** Press **AUDIO IN/USB** repeatedly to select **AUDIO IN** source.
- 3** Start to play the device (see the device user manual).



---

## Factory reset

Reset device to default setting.

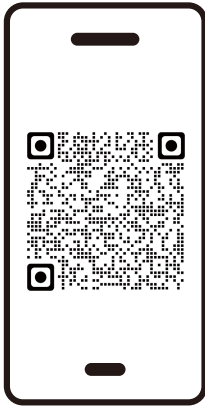
When the device is power on, press and hold **▶||** buttons for 5 seconds in **AUDIO IN** source at **VOLUME 2**.

The device is restore to factory defaults and enters standby mode.

## 8 Philips Entertainment App

### App download

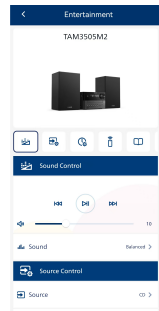
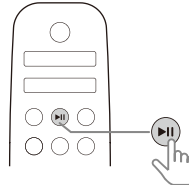
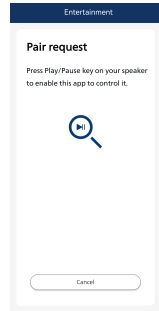
Scan the QR code and press “Download” button, or search “Philips Entertainment” in the Apple App Store or Google Play to download the app.



[philips.to/entapp](https://philips.to/entapp)

The Philips Entertainment App puts you in charge of the music you are listening to. You can use your smart device to easily choose the sound style you want, switch between sources, and more.

### Pair the App with your micro system




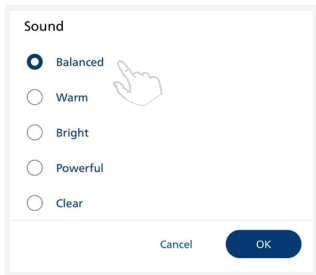
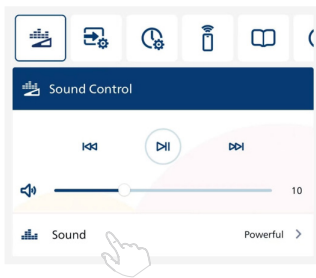
- 1 Launch the Philips Entertainment App on your mobile device.
- 2 Make sure your mobile device is enabled the Bluetooth setting.
- 3 If you connect the Philips Entertainment App with your micro system for the first time, you are asked to pair the App with your micro system.
- 4 Press Play/Pause key on your micro system to enable the App to discover and control it.

## Choose your Sound

You can choose the ideal sound for your music.

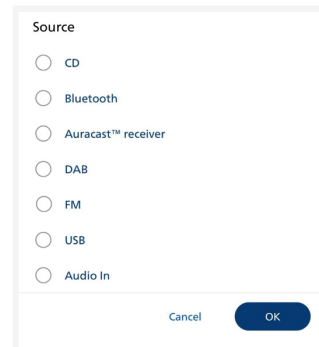
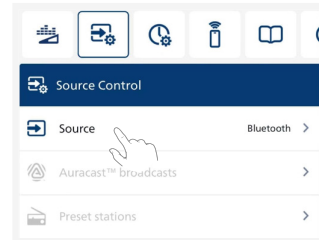
### Select Equalizer (EQ) Effect

Press  icon on the App to select predefined sound modes to suit your music: **BALANCED/WARM/BRIGHT/POWERFUL/CLEAR.**

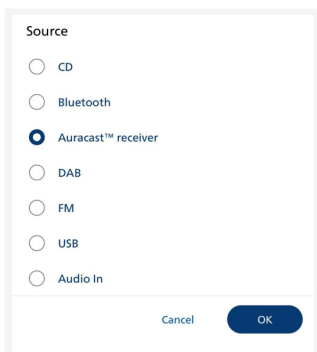


## Select Source

Press  icon on the App to select **CD/BLUETOOTH/AURACAST/FM/USB/AUDIO IN.**

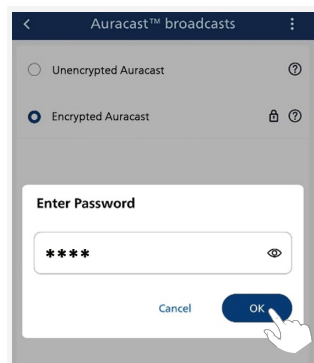
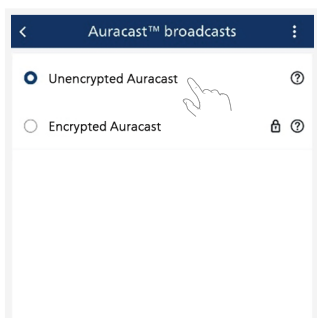
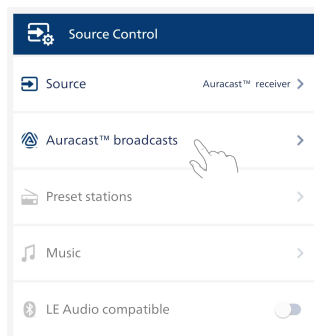
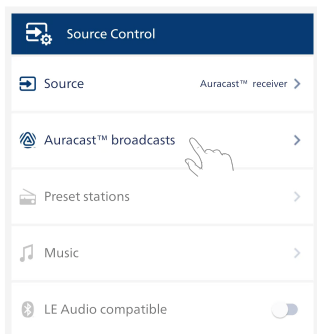


## Select unencrypted Auracast broadcast

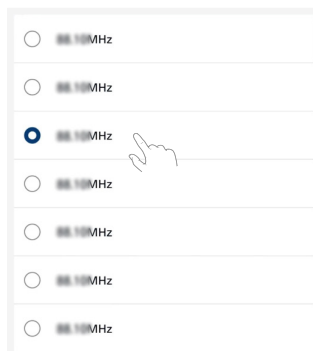


- 1 Select Auracast™ receiver source.
- 2 Press [**Auracast™ broadcasts**] to enter Auracast™ broadcast list.
- 3 When an **unencrypted** playback source from mobile phone or dongle is selected, the micro system will search and connect to it.
  - ↳ Make sure to activate Auracast™ broadcast on your mobile phone or dongle.

## Select encrypted Auracast broadcast

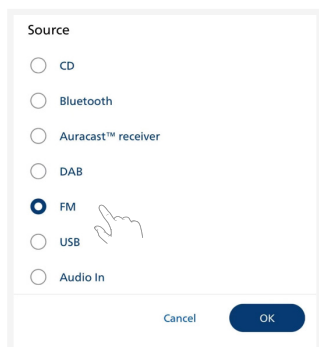


- 1 Select Auracast™ receiver source.
- 2 Press **[Auracast™ broadcasts]** to enter Auracast™ broadcast list.
- 3 When an **encrypted** playback source from mobile phone or dongle is selected, you will ask to input a password. Entering the same password that you input when setting up Auracast™ broadcast from your mobile phone or dongle.
  - ↳ Make sure to activate Auracast™ broadcast on your mobile phone or dongle.

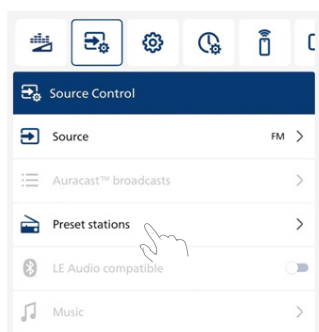
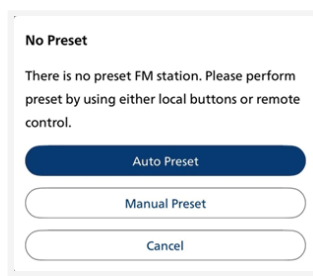


- 1 Select to enter **[FM]** source.
- 2 Press to select FM preset station.


## Select a preset radio station

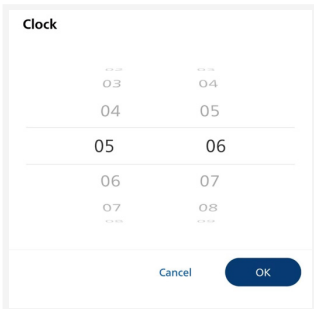
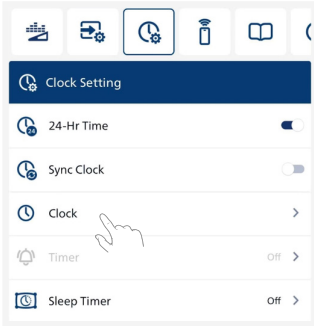


When there is no preset station stored in the micro system, the app will remind to perform auto scanning or manual preset.



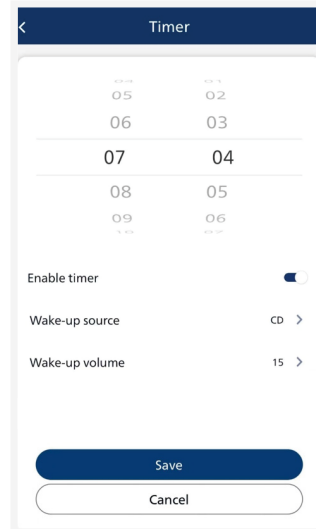
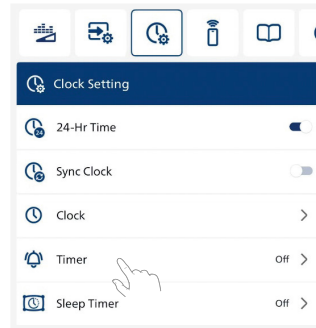
## Clock Setting

Press  icon on the App to enter clock setting.



- **[24-Hr Time]**: Set 12 or 24-hour time mode.  
↳ 24Hr Time is set by default.
- **[Sync Clock]**: When Sync clock is enable, the App will synchronize the mobile clock to micro system upon their connection.  
↳ Turn off **[Sync Clock]** so that users can customize the time for their micro systems.
- **[Clock]**: option to swipe and select the time on the clock page.

## Set Alarm Timer



- 1 **[Timer]**: Press to enter the alarm timer setting. Set the time to wake up the micro system.
- 2 Select **[Enable timer]**: the micro system will automatically turn on and play after reaching the set time.

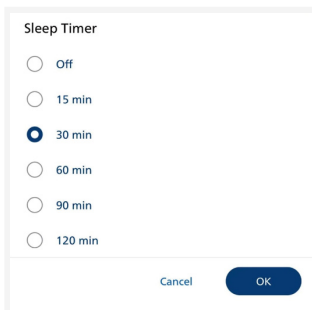
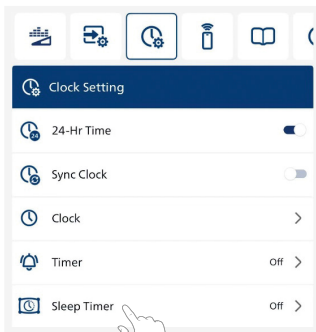


- 3 Select **[Wake-up source]** : CD/BLUETOOTH/AURACAST/FM/USB/AUDIO IN.
- 4 Select **[Wake-up volume]** : volume level 0 to 15.
- 5 Press **[Save]** to store the wake-up timer setting.
- 6 The micro system will turn on at setting time.

### Note

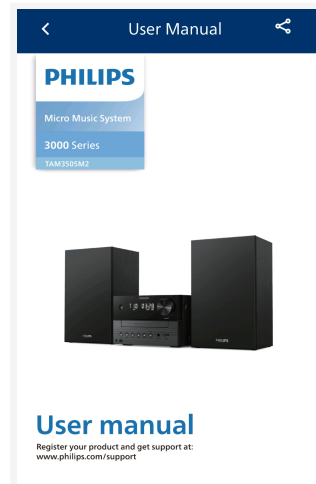
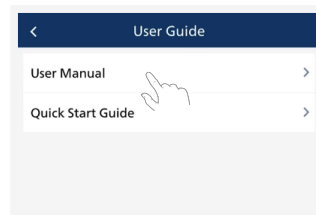
- When clock is not set, alarm timer cannot be set.

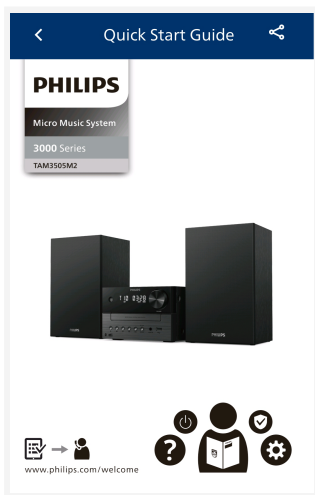
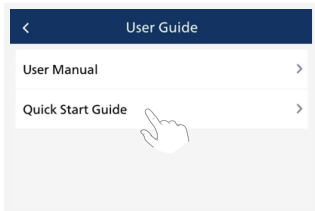
## Set Sleep Timer




- 1 Press **[Sleep Timer]** to enter sleep timer setting.
- 2 Select **15/30/60/90/120 min.**
- 3 Press **[OK]** to store the sleep timer setting.
- 4 The micro system will turn off after setting time.

## User guide





For more information about using this product, press  icon on the App you can find **[User Manual]** and **[Quick Start Guide]**.

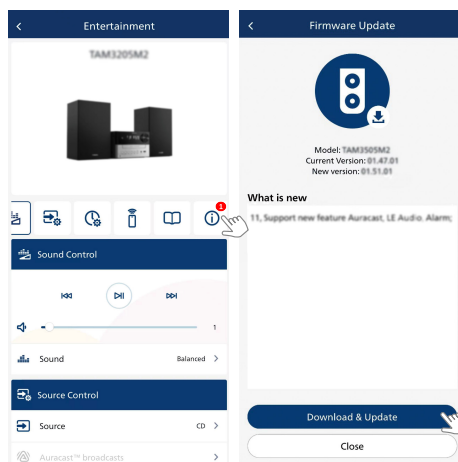
## Firmware Upgrade

To get the best features and support, update your product with the latest firmware version.

The firmware for MCU can be upgraded to the latest version via Philips Entertainment app.

Please go to **Firmware Update** and press **Download & Update**. If the upgrade is released, the **Download & Update** icon can be pressed to proceed automatically.

Once this product is connected to Philips Entertainment app, it can receive over-the-air firmware update. Always upgrade with the latest firmware version to improve the performance of this product.



# 9 Product information



## Note

- Product information is subject to change without prior notice.

- Rated output power:**  
Total 20W (RMS)
- Acoustic frequency response:**  
66Hz-20KHz
- Speaker driver:** 2 x 3" full range 6Ω;
- Bass enhancement:** 2 x bass port
- Support disc type:** CD-DA, CD-R, CDRW, MP3-CD (8/12 cm)
- Bluetooth version:** V5.4
- Bluetooth supported profiles:** A2DP V1.3, AVRCP V1.6
- Bluetooth frequency band / Output power:** 2.402GHz~2.480GHz ISM Band / ≤ 9dBm
- USB playback:**
  - Type A, USB Direct 2.0, 5V/1A, MSC file format, FAT 16/32
  - Support USB up to 128G
- Tuner frequency range:**  
FM 87.5-108MHz
- Preset stations:** 20 (FM) +20 (DAB+)
- AUDIO IN input level:** 500mV +100mV RMS
- Power:** 100-240V~, 50/60 Hz(AC Input)
- Operation power consumption:**  
20 W
- Standby power consumption:**  
< 0.5W (clock display off)
- Dimensions (W x H x D):**  
180 x 115.6 x 220.4 mm (Main unit);  
150 x 240 x 126.5 mm (Speaker box)
- Weight:** 1.435 kg (Main unit);  
2 x 0.96 kg (Speaker box)

# USB playability information

Extension	Codec	Sample Rate	Bitrate
.mp3	MPEG 1 Layer 1	32~48 kHz	32~320 kbps
	MPEG 1 Layer 2	32~48 kHz	32~320 kbps
	MPEG 1 Layer 3	32~48 kHz	32~320 kbps
.wav	WAV	8~48 kHz	Up to 1536 kbps
.wma	WMA	8~48 kHz	48~192 kbps
.flac	FLAC	Up to 48 kHz/16 bit	

## Compatible USB devices:

- USB flash memory (USB2.0 or USB1.1)
- USB flash players (USB2.0 or USB1.1)
- memory cards (requires an additional card reader to work with this unit)

## Supported USB formats:

- USB or memory file format: FAT12, FAT16, FAT32 (sector size: 512 bytes)
- MP3 bit rate (data rate): 32-320 Kbps and variable bit rate
- WMA bit rate (data rate) : 48~192 kbps
- WAV bit rate (data rate) : Up to 1536 kbps
- Directory nesting up to a maximum of 8 levels
- Number of albums/ folders: maximum 99
- Number of tracks/titles: maximum 999
- File name in Unicode UTF8 (maximum length: 32 bytes)

### Unsupported USB formats:

- Empty album: An empty album is an album that does not include MP3/WMA/WAV graphics and will not be displayed.
- Unsupported file formats will be skipped. For example, Word files (. doc) or MP3 files with the extension dif will be ignored and will not be played.

---

## Supported MP3 disc formats

- ISO9660, Joliet
- Maximum title number: 128 (depending on file name length)
- Maximum album number: 99
- Supported sampling frequencies: 32 kHz, 44.1 kHz, 48 kHz
- Supported Bit-rates: 32~320(kbps), variable bit rates

# 10 Troubleshooting



## Warning

- Never remove the casing of this device.

To keep the warranty valid, never try to repair the system yourself.

If you encounter problems when using this device, check the following points before requesting service. If the problem remains unsolved, go to the Philips Web page ([www.philips.com/support](http://www.philips.com/support)). When you contact Philips, make sure that the device is nearby and the model number and serial number are available.

### No power

- Make sure that the AC power cord of the device is connected properly.
- Make sure that there is power at the AC outlet.
- As a power-saving feature, the system switches off automatically 15 minutes after track play reaches the end and no control is operated.

### No sound or poor sound

- Adjust the volume.
- Check that the speakers are connected correctly.
- Check if the stripped speaker wires are clamped.

### No response from the unit

- Disconnect and reconnect the AC power plug, then turn on the unit again.
- As a power-saving feature, the system switches off automatically 15 minutes after track play reaches the end and no control is operated.

### Remote control does not work

- Before you press any function button, first select the correct source with the remote control instead of the main unit.
- Reduce the distance between the remote control and the unit.
- Insert the batteries with polarities (+/- signs) aligned as indicated.
- Replace the battery.
- Aim the remote control directly at the sensor on the front of the unit.

### No disc detected

- Insert a disc.
- Check if the disc is inserted upside down.
- Wait until the moisture condensation at the lens has cleared.
- Replace or clean the disc.
- Use a finalized CD or correct format disc.

### Cannot display some files in USB device

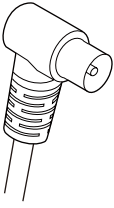
- The number of folders or files in the USB device has exceeded a certain limit. This phenomenon is not a malfunction.
- The formats of these files are not supported.

### USB device not supported

- The USB device is incompatible with the unit. Try another one.

### Poor radio reception

- Increase the distance between the unit and your TV or other radiation sources.
- Fully extend the radio antenna.
- Connect an outdoor radio antenna. You may purchase a replacement antenna cable with a L-shape plug on one end, as shown below.
  - Connect the L-shape plug to this product, and fit the plug on the other end into your wall socket.



**Music playback is unavailable on this unit even after successful Bluetooth connection.**

- The device cannot be used to play music through this unit wirelessly.

**The audio quality is poor after connection with a Bluetooth-enabled device.**

- The Bluetooth reception is poor. Move the device closer to this unit or remove any obstacle between them.

**Bluetooth cannot be connected with this unit.**

- The device does not support the profiles required for this unit.
- The Bluetooth function of the device is not enabled. Refer to the user manual of the device to find out how to enable the function.
- This unit is not in pairing mode.
- This unit is already connected with another Bluetooth-enabled device. Disconnect that device and then try again.

**The paired mobile device connects and disconnects constantly.**

- The Bluetooth reception is poor. Move the device closer to this unit or remove any obstacle between them.
- Some mobile phones may connect and disconnect constantly when you make or end calls. This does not indicate any malfunction of this unit.

- For some devices, the Bluetooth connection may be deactivated automatically as a power-saving feature. This does not indicate any malfunction of this unit.

**Timer does not work**

- Set the clock correctly.
- Switch on the timer.

**Clock/timer setting erased**

- Power has been interrupted or the power cord has been disconnected.
- Reset the clock/timer.

**How to keep clock display on or off in standby?**

- In standby, press and hold **CLOCK** to toggle clock display on or off.



Specifications are subject to change without notice.

2024 © Philips and the Philips Shield Emblem are registered trademarks of Koninklijke Philips N.V. and are used under license. This product has been manufactured by and is sold under the responsibility of MMD Hong Kong Holding Limited or one of its affiliates, and MMD Hong Kong Holding Limited is the warrantor in relation to this product.

**TAM3505M2\_12\_UM\_V3.0**

