

PHILIPS



IPL Hair removal
device with SenseIQ

Lumea IPL 9900
Series

SmartSkin sensor

4 intelligent attachments: body,
face, bikini, underarms

Exclusive AI-powered app
features

Both cordless and corded use



BRI951/01

Cordless for ease, personalised treatment with SenseIQ

Enjoy 12 months of hair-free smooth skin*

Enjoy hassle-free, personalised treatment with the cordless version of our fastest Lumea IPL device. SenseIQ technology with smart attachments and guidance in the Lumea IPL app to give you long-lasting smooth skin.

Gentle and effective for long-lasting smooth skin

- Treat only 2 x a month for fast results
- For convenience with corded and cordless options
- Developed with dermatologists to be easy and effective

Full solution for face and body

- Full solution for face and body with 4 smart attachments
- Suitable for most skin tones and hair colours

Personalised IPL hair removal treatment

- Gentle and comfortable with SenseIQ
- Smart Body hair analysis with SkinAI

Lumea IPL 9900 Series

IPL Hair removal device with SenseIQ

BRI951/01

Highlights

2 x a month for fast results



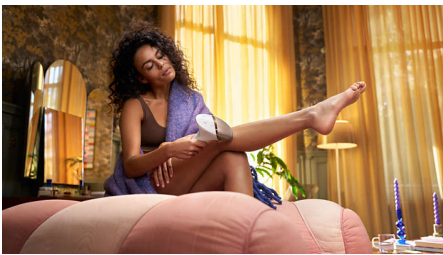
Every 2 weeks to start with — that's half as many treatments as other brands. Followed by touch-ups just once a month. That's it. Covering both lower legs takes 8.5 minutes.

SenseIQ technology



Lumea 9900 Series has five easily adjustable light settings. Our SmartSkin sensor reads your skin tone and helps you find the most comfortable setting. Intelligent attachments adapt treatment for each body area.

For convenience with corded and cordless options



Philips Lumea is designed to be convenient and easy to use. Use the device corded for fast treatment on large body areas, like your legs, or go with the cordless battery mode to treat hard-to-reach body areas with precision.

4 smart attachments



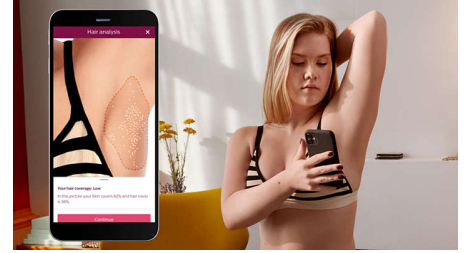
Specially designed attachments perfectly fit the curves of your body and trigger the most effective programs for each body area when they are connected. Face: Flat design and small window with UV filter. Body: Curved inwards with a large window. Bikini and Armpits: Curved outwards for hard-to-reach areas.

Developed with dermatologists



As a leader in health technology, Philips developed Lumea IPL in consultation with dermatologists, for easy and effective use in the safety of your home. Derived from technology used in professional salons, Lumea IPL offers gentle treatment, even on sensitive areas.

Exclusive SkinAI features



Our free coaching app offers step-by-step guidance now with exclusive SkinAI technology to analyse your body hair and track hair reduction.

For most skin and hair types



IPL needs contrast between the pigment in the hair colour and the pigment in the skin tone, it therefore works on naturally dark blonde, brown and black hair and on skin tones from fair to dark brown (I-V).

Lumea IPL 9900 Series

IPL Hair removal device with SenseIQ

BRI951/01

Specifications

Technical specs. attachments

Body treatment attachment: Shape: Convex curved, Window size: 4.1 cm², Tailored treatment for body: legs, arms and stomach

Face treatment attachment: Shape: Flat, Window size: 2 cm², extra filter, Tailored treatment for face: upper lip, chin and jawline

Bikini treatment attachment: Shape: Concave curved, Window size: 3 cm², Tailored treatment for sensitive bikini area

Underarm treatment attachment: Shape: Concave curved, Window size: 3 cm², Tailored treatment for underarms

Safety and adjustable settings

Integrated UV filter: Protects skin from UV light

5 light energy settings: Adjustable to your individual skin tone

Integrated safety system: Prevents unintentional flashing

Skin Tone sensor: Detects your skin tone

SmartSkin sensor: The right setting on demand

Application mode

Slide and Flash: For quick application

Stamp and Flash: For treatment on small areas

Corded/cordless use: Both cordless and corded use

Technical specifications

Battery type: Rechargeable battery

Voltage: 100–240 V

High performance lamp: Built to last, 450,000 flashes, equivalent to 39 years of lamp lifetime**

Service

Warranty: 2-year global warranty + 1 extra year of warranty upon product registration within 90 days

Items included

Instructions for use: User manual

Storage: Luxury pouch

Adapter: 19.5 V / 4000 mA

Application time

Lower leg: 8.5 min

Underarms: 2.5 min

Bikini line: 2 min

Face areas: 1.5 min

