

Philips Fast IPS Gaming
monitor
Full HD gaming monitor

Evnia 3000

27" (68.5 cm)
1920 x 1080 (Full HD)

27M2N3200S



Broaden your gaming horizon

This monitor allows you to game with ultimate precision and speed at 180Hz. With sharp HDR quality imagery and Full HD resolution guaranteed, this monitor produces an excellent all-around gaming experience.

Built for fast action

- 0.5 ms ultra-fast speed for crisp image and smooth gameplay

Features designed for gamers needs

- LowBlue mode and Flicker-free easy-on-the eyes viewing
- SmartImage game mode optimized for gamers
- Built-in stereo speakers for multimedia
- EasySelect menu toggle key for quick on-screen menu access
- Smart Crosshair: for better aim and more fun

Built for fast action

- 180Hz refresh rates for ultra-smooth, brilliant images
- Low input lag reduces time delay between devices to monitor

Immersive visuals

- 16:9 Full HD display for crisp detailed images

PHILIPS

Full HD gaming monitor
Evnia 3000 27" (68.5 cm), 1920 x 1080 (Full HD)

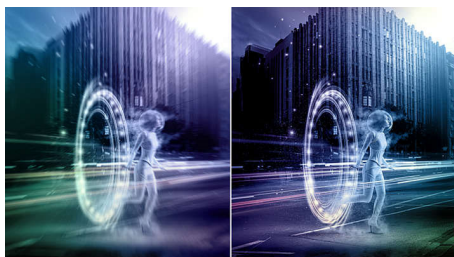
Highlights

180Hz Gaming



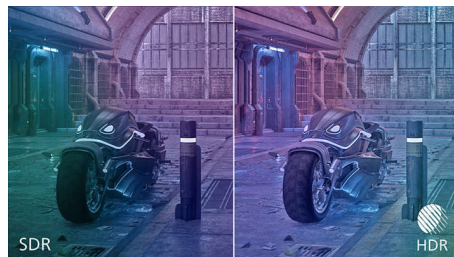
You play intense, competitive gaming. You demand display with lag free, ultra-smooth images. This display redraws the screen image up-to 180 times per second, effectively faster than a standard display. A lower frame rate can make enemies appear to jump from spot to spot on the screen, making them difficult targets to hit. With 180Hz frame rate, you get those critical missing images on the screen which shows enemy movement in ultra-smooth motion so you can easily target them. With ultra-low input lag and no screen tearing, this Philips display is your perfect gaming partner.

0.5 ms Smart MBR fast response



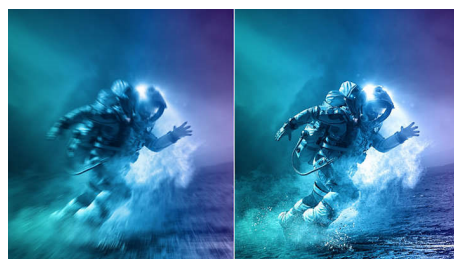
Philips Evnia with 0.5 ms Smart MBR effectively eliminates smearing and motion blur, delivers sharper and precise visuals to enhance gaming experience. Fast-moving action and dramatic transitions will be rendered smoothly. Best choice for playing thrilling and twitch-sensitive games.

High Dynamic Range (HDR)



High Dynamic Range delivers a dramatically different visual experience. With astonishing brightness, incomparable contrast and captivating color, images come to life with much greater brightness while also featuring much deeper, more nuanced darks. It renders a fuller palette of rich new colors never before seen on display, giving you a visual experience that engages your senses and inspires emotions.

Fast IPS



This feature is made for action-packed gameplay. Not only does it work four times faster than a conventional IPS panel, but it also pairs well with high frame rates for the utmost gaming quality at rapid speeds with sharp imagery guaranteed.

LowBlue Mode & Flicker-free

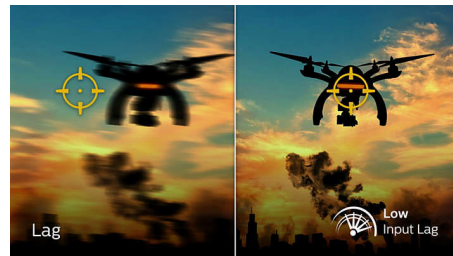


Our LowBlue Mode and Flicker-free technology have been developed to reduce eye

27M2N3200S/69

strain and fatigue often caused by long hours in front of a monitor.

Low Input Lag



Input lag is the amount of time that elapses between performing an action with connected devices and seeing the result on screen. Low input lag reduces the time delay between entering a command from your devices to monitor, greatly improve on playing twitch-sensitive video games, particularly important to whom plays fast-paced, competitive games.

SmartImage Game mode



The new Philips gaming display has quick access OSD fine tuned for gamers, offering you multiple options. "FPS" mode (First person shooting) improves dark themes in games, allowing you to see hidden objects in dark areas. "Racing" mode adapts display with fastest response time, high color, along with image adjustments. "RTS" mode (Real time strategy) has a special SmartFrame mode which enables highlighting of specific area and allows for size and image adjustments. Gamer 1 and Gamer 2 enable you to save personal customized settings based on different games, ensuring best performance.



Specifications

Connectivity

- Signal Input: HDMI 2.0 x 2, DisplayPort 1.4 x 1
- Sync Input: Separate Sync
- Audio (In/Out): Audio out
- HDCP: HDCP 1.4 (HDMI / DP), HDCP 2.2 (HDMI / DP)

Picture/Display

- Panel Size: 27 inch / 68.5 cm
- Aspect ratio: 16:9
- LCD panel type: IPS technology
- Backlight type: W-LED system
- Pixel pitch: 0.31125 x 0.31125mm
- Brightness: 300 cd/m²
- Display colors: 16.7 M (8 bits)
- Color gamut (typical): DCI-P3:95%*, sRGB 128%*, AdobeRGB 90%*
- Contrast ratio (typical): 1000:1
- SmartContrast: Mega Infinity DCR
- Response time (typical): 1 ms (Gray to Gray)*
- Viewing angle: 178° (H) / 178° (V), @ C/R > 10
- Picture enhancement: SmartImage game
- Maximum resolution: 1920x1080 @ 180 Hz
- Effective viewing area: 597.6(H)x336.15(V)mm
- Scanning Frequency: 30k - 200 kHz (H) / 48 - 180 Hz (V)
- sRGB
- Flicker-free
- Pixel Density: 81.59 PPI
- LowBlue Mode
- Display Screen Coating: Anti-Glare, 3H, Haze 25%
- EasyRead
- HDR: HDR 10 supported
- Smart Crosshair
- Shadow Boost: Yed
- Smart MBR: 0.5ms*

Convenience

- Built-in Speakers: 2W x 2
- Plug & Play Compatibility: DDC/CI, Mac OS X, sRGB, Windows 11 / 10
- User convenience: Power On/Off, Menu/OK, Input/Up, Game Settings/Down, SmartImage game/Back
- OSD Languages: Brazil Portuguese, Czech, Dutch, English, Finnish, French, German, Greek, Hungarian, Italian, Japanese, Korean, Polish, Portuguese, Russian, Spanish, Simplified Chinese,

- Swedish, Turkish, Traditional Chinese, Ukrainian
- Other convenience: Kensington lock, VESA mount (100x100mm), LowBlue Mode

Stand

- Tilt: -5/20 degree

Power

- Power supply: Internal, 100-240VAC, 50-60Hz
- Off mode: 0.3 W (typ.)
- On mode: 27.4 W (typ.)
- Standby mode: 0.5 W (typ.)
- Power LED indicator: Operation - White, Standby mode- White (blinking)

Dimensions

- Packaging in mm (WxHxD): 690 x 420 x 141 mm
- Product without stand (mm): 615 x 369 x 61 mm
- Product with stand(max height): 615 x 463 x 196 mm

Weight

- Product with packaging (kg): 7.25 kg
- Product with stand (kg): 4.71 kg
- Product without stand (kg): 4.10 kg

Operating conditions

- Altitude: Operation: +12,000ft (3,658m), Non-operation: +40,000ft (12,192m)
- Temperature range (operation): 0°C to 40 °C
- MTBF: 50,000 (Excluded backlight) hour(s)
- Relative humidity: 20%-80 %
- Temperature range (storage): -20°C to 60 °C

Sustainability

- Environmental and energy: RoHS
- Recyclable packaging material: 100 %
- Specific Substances: Mercury free, PVC / BFR free housing
- Post consumer recycled plastics: 85%*

Compliance and standards

- Regulatory Approvals: CB, TUV/ISO9241-307, TUV-BAUART, EAC, EAEU RoHS, MEPS, KC, BSMI, CE Mark, UKCA, EMF, FCC, ICES-003

Cabinet

- Color: Charcoal
- Finish: Textured



Issue date 2024-08-06

Version: 2.2.2

© 2024 Koninklijke Philips N.V.
All Rights reserved.

Specifications are subject to change without notice.
Trademarks are the property of Koninklijke Philips N.V.
or their respective owners.

www.philips.com

* The maximum resolution works for either HDMI input or DP input.

* For best output performance, please always ensure that your graphic card is capable of achieving the maximum resolution and refresh rate of this Philips display.

* Response time value equal to SmartResponse

* Smart MBR is to adjust brightness for blur reduction, so cannot adjust brightness while Smart MBR is turned on. To reduce motion blur, LED backlight will strobe synchronously with screen refresh, which may cause noticeable brightness change.

* Smart MBR is gaming-optimized mode. Turn on Smart MBR may cause noticeable screen flickering. It is recommended to turn off when you are not using the gaming function.

* sRGB Area based on CIE1931

* Adobe RGB and DCI-P Coverage based on CIE1976

* This monitor strives for sustainability: the stand's feet are made with 35% recycled plastic and monitor's chassis is made up of 85% post-consumer recycled plastic.

* The monitor may look different from feature images.