



Philips NeoPix 550  
Home Projector

100" in True Full HD 1080p

Multiple Image corrections  
Powerful Sound System  
Super Silent

NPX550

## A silent fan, loudspeakers and your apps in 1080p!

Compact, silent and designed to produce bright and colourful images in a dark room, the NeoPix 550 Smart boasts a 100 inch-wide True Full HD 1080p resolution. Thanks to LuminOS, your favourite content is always at your fingertips.

### **Amazing Images**

- NeoPix 550 in True Full HD 1080p
- Advanced LED Light Source

### **Sound experience**

- Super Silent
- Powerful sound system

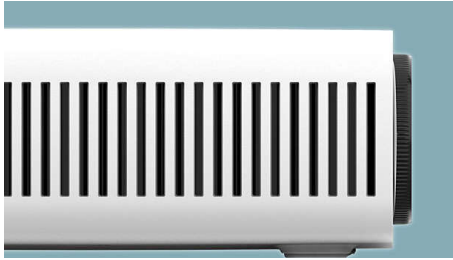
### **Enriched Connectivity**

- Smart OS for apps and more
- Wi-Fi screen mirroring experience

# PHILIPS

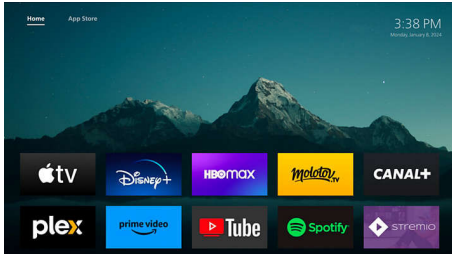
## Highlights

### Super Silent



Meticulously engineered fan system to optimise airflow and heat dissipation while maintaining a sleek, compact design. Utilising high-performance fans, this projector offers unparalleled silence, which allows you to fully immerse yourself in your entertainment.

### Smart OS for apps and more



Take full advantage of endless entertainment directly out of the box with all of your favourite pre-installed apps.

### NeoPix 550 in True Full HD 1080p



Bring your entertainment to life with True Full HD 1080p — enjoy razor-sharp images, deep contrast and crystal-clear text for an unforgettable viewing experience with 500 Lumens.

### Advanced LED Light Source



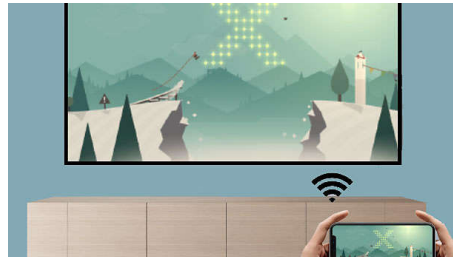
The high-quality LED light system delivers rich, vivid colours that last up to 30,000 hours. With an average use of 4 hours per day, this projector will last for up to 20 years! In addition, its energy consumption is much lower than that of a regular lamp projector, allowing you to enjoy a bigger screen and a fully immersive cinema experience, all from an environmentally friendly device.

### Powerful sound system



Immerse yourself in outstanding sound quality with the audio system, featuring two speakers for a truly exceptional audio experience. Need a bigger sound? The 3.5 mm jack output is there to connect your earphones or external speakers.

### Wi-Fi screen mirroring experience



Connect your mobile devices such as a tablet, a smartphone or even a computer wirelessly to mirror and share all your contents.

## Specifications

### Technology

- Display technology: LCD
- Light source: LED
- Brightness: up to 500 lumens\*
- Contrast ratio: 3000:1
- Resolution: 1920 x 1080 pixels
- Throw ratio: 1.43:1
- Aspect ratio: 16:9
- Focus adjustment: Manual
- Integrated media player
- LED lifetime: Up to 30,000 h
- Projection image size: up to 255 cm (100")
- Projection distance: 100" @ 120" distance (306 cm)
- Resolution supported: 1920 x 1080 pixels
- Recommended usage: 100" max in dark room

### Connection

- Wi-Fi: Dualband 2.4 GHz and 5 GHz
- Bluetooth: 4.2
- HDMI: x 1
- USB: 1 x USB-A + 1 USB-C
- Audio out: 3.5 mm jack
- DC-IN

### Sound

- Stereo Speaker: 2 x 7 W
- Bluetooth speaker connection

### Dimensions

- Weight: 4.45 kg
- unpacked (W x D x H): 274 x 294 x 107 mm

### Colour Variation

- Colour: White



Issue date 2024-10-12

Version: 4.4.1

EAN: 76 40186 96240 7

© 2024 Koninklijke Philips N.V.  
All Rights reserved.

Specifications are subject to change without notice.  
Trademarks are the property of Koninklijke Philips N.V.  
or their respective owners.

[www.philips.com](http://www.philips.com)

\* Colour brightness (colour light output) and white brightness (white light output) will vary depending on projector settings. Colour light output measured in accordance with IDMS 15.4; white light output measured in accordance with ISO 21118.

\* The terms HDMI, HDMI High-Definition Multimedia Interface, HDMI trade dress and the HDMI Logos are trademarks or registered trademarks of HDMI Licensing Administrator, Inc.

\* APPS: Internet connection required. Data and subscription charges may apply. Apps and UI may be subject to change without notice. Agreement of the Terms and Conditions and Privacy Policy is required before use. Some services are available to watch after registration and subscription.