

PHILIPS

EVNIA



QD OLED gaming
monitor

4K UHD gaming
monitor

Evnia 8000

31.5" (80 cm)

3840 x 2160 (4K UHD)



32M2N8900

Gaming beyond innovation

This monitor produces incredible visuals. Its QD OLED panel is matched with 4K UHD resolution and Display HDR TrueBlack 400 certification, which makes it an absolute powerhouse of visual quality, even at 240 Hz.

Features designed for gamers' needs

- AI-enhanced Ambiglow: for intensified entertainment
- Evnia Precision Centre: Maximise Your Gaming Experience
- Dynamic Lighting: Synchronise lighting on all devices.
- LowBlue mode and Flicker-free easy-on-the eyes viewing
- Access and display multiple sources on two devices
- Enhanced audio with DTS Sound™

Built for fast action

- Ultra-fast 240 Hz refresh rate for virtually lag-free gaming

Immersive visuals

- Ultra Wide-Color wider range of colours for a vivid picture
- UltraClear 4K UHD (3840 x 2160) resolution for precision
- DisplayHDR™ True Black 400 delivers incredible shadow details
- True 10-bit display reproduces smoother gradients on visuals
- QD OLED for superior colours and vibrant visuals

4K UHD gaming monitor

QD OLED gaming monitor

32M2N8900/01

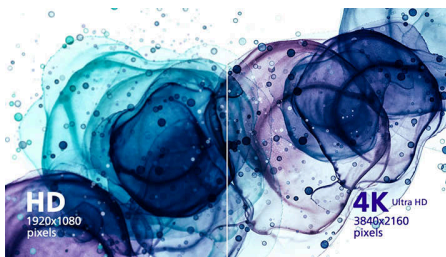
Highlights

Ultra-fast 240 Hz refresh rate



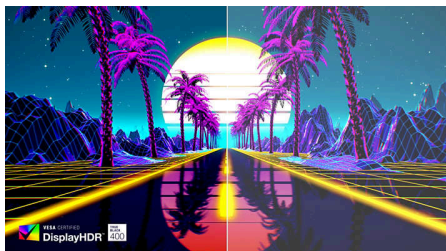
While playing the most intense, engaging and action-oriented games, the ultra-fast 240 Hz refresh rate creates an ultra-smooth, lag-free gaming experience. This Philips display redraws the screen image up to 240 times per second, effectively faster than a standard display. 240 Hz give superior motion and clarity to the visuals, especially for fast-paced games like FPS and racing games. With the Philips 240 Hz display, action sequences in gameplay look judder-free and ghost-free. You will experience deeper immersion and feel alive in the game.

UltraClear 4K UHD resolution



These Philips displays utilise high-performance panels to deliver UltraClear, 4K UHD (3840 x 2160) resolution images. Whether you are a demanding professional requiring extremely detailed images for CAD solutions, a user of 3D graphics applications or a financial wizard working on huge spreadsheets, Philips displays will make your images and graphics come alive.

DisplayHDR™ True Black 400



This Philips monitor is certified with VESA DisplayHDR™ True Black 400, delivering stunningly accurate shadow details with deeper

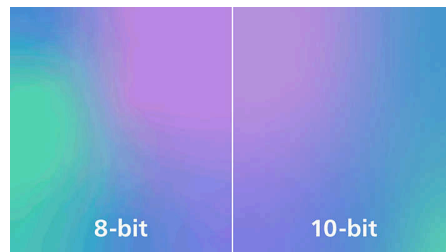
blacks for a remarkable visual experience compared with conventional monitors of the same peak luminance. This Philips monitor comes with several HDR modes, each optimised for your usage scenarios: HDR Game, HDR Movie, HDR Photo and VESA DisplayHDR-certified level.

Ultra Wide-Color Technology



Ultra Wide-Color Technology delivers a wider spectrum of colours for a more brilliant picture. The Ultra Wide-Color wider "colour gamut" produces more natural-looking greens, vivid reds and deeper blues. Bring media entertainment, images and even productivity more alive with vivid colours from Ultra Wide-Color Technology.

True 10-bit colour depth



With this Philips true 10-bit colour display, you can see colour-critical professional work of exceptional colour accuracy that meets professional standards. Compared with conventional 8-bit colour displays, this Philips monitor produces a more natural transition between hues for smoother gradients.

QD OLED technology



QD-OLED represents a hybrid approach that marries OLED panels and quantum dot technology. By combining what's best of both, QD-OLED guarantees high contrast, deep blacks and unlimited viewing angles, with a higher peak brightness and more vibrant colours.

LowBlue mode and Flicker-free



Our LowBlue Mode and Flicker-free technology have been developed to reduce eye strain and fatigue often caused by long hours in front of a monitor.

AI-enhanced Ambiglow



Our AI-enhanced processor analyses the incoming image content and continuously adapts the colour and brightness of the emitted light to match the image. This feature adds a new dimension to your viewing experience. The innovative Ambiglow uses its AI capabilities to create a truly immersive and customisable gaming experience. From filling your gaming room with colour to feeling like you are part of the game, the AI-enhanced Ambiglow is made to make your gaming experience the best it's ever been by combining intelligence, colour and light.



4K UHD gaming monitor

QD OLED gaming monitor

32M2N8900/01

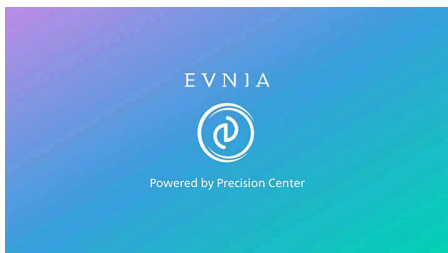
Highlights

DTS Sound™



DTS Sound is an audio-processing solution designed to optimise the playback of music, movies, streaming and games on the PC regardless of form factors. DTS Sound enables an immersive virtual surround sound experience, complete with rich bass and dialogue enhancement and maximised volume levels free of any clipping or distortion.

Evnia Precision Centre



Evnia Precision Centre is an easy-to-use software designed to optimise and personalise your Evnia monitor. Whether you're a casual or competitive

gamer, it offers a wide range of customisation options to match your unique gaming style. With intuitive controls and seamless navigation, Evnia Precision Centre gives you full control, providing everything you need to elevate your gaming to the next level — right at your fingertips.

MultiView and built-in KVM



Control and switch between two devices through a single keyboard and mouse with the built-in KVM. MultiView lets you survey both sources simultaneously on one screen. With these features, you can reduce cable clutter and save valuable time. Perfect for streamers with two PCs, content creators or when prepping devices for a LAN event.

Dynamic Lighting



This feature is a Microsoft certification program that enables users with Windows 11 to synchronise and manage the RGB lighting of all of their monitors and peripherals from one menu. By doing this, the Dynamic Lighting feature creates a complete RGB lighting ecosystem with Philips Evnia Ambiglow across all devices that ultimately caters to a customisable user experience.



4K UHD gaming monitor

QD OLED gaming monitor

32M2N8900/01

Specifications

Picture/Display

Panel Size: 31.5"/80 cm
Aspect ratio: 16:9
Monitor Panel Type: QD OLED
Pixel pitch: 0.1814 x 0.1814 mm
Brightness: SDR: 250nits (APL 100%) nit, HDR: 450 (APL 10%) nit, HDR E/P: 1000 (APL 3%) nit
Display colours: Colour support 1.07 billion colours (10-bit)
Colour gamut (typical): DCI-P3:99%, sRGB: 147.5%, NTSC 120%, Adobe RGB 118%*
Contrast ratio (typical): 1,500,000:1
SmartContrast: Mega Infinity DCR
Response time (typical): 0.03 ms (Grey to Grey)*
Viewing angle: 178° (H)/178° (V), @ C/R > 10000
Picture enhancement: SmartImage game
Maximum resolution: 3840 x 2160 @ 240 Hz (HDMI/DP)
Effective viewing area: 699.48 (H) x 394.73 (V) mm
Scanning Frequency: 30k-510k Hz (H)/ 48-240 Hz (V)
sRGB
Delta E: <2 (sRGB)
Flicker-free
Pixel Density: 139.87 PPI
LowBlue Mode
Display Screen Coating: Anti-reflection, 2H
Low Input Lag
EasyRead
Adaptive sync
HDR: DisplayHDR True Black 400 certified
Ambiglow: 3 sided
Pixel format: RGB Q-Stripe*
Clear MR Tier: 13,000
Smart Sniper
Stark Shadow Boost
Windows Dynamic Lighting
Smart Crosshair

Connectivity

Signal Input: HDMI 2.1 x 2, DisplayPort 1.4 x 1, USB-C x 1 (DP Alt mode, Video, Data)
Sync Input: Separate Sync
Audio (In/Out): Audio out
HDCP: HDCP 1.4 (HDMI/DisplayPort), HDCP 2.2 (HDMI/DisplayPort), HDCP 2.3 (HDMI/DisplayPort)
USB Hub: USB 3.2 Gen1, 5 Gbps; USB UP, USB-C upstream x 1 (DP Alt mode), USB-A downstream x 2 (with 1 for fast charge B.C 1.2)

Power Delivery

Max power delivery: USB-C up to 65 W (5 V/3 A, 7 V/3 A, 9 V/3 A, 10 V/3 A, 12 V/3 A, 15 V/3 A, 20 V/3.25 A)
Version: USB PD version 3.0

Convenience

Built-in Speakers: 5 W x 2, DTS
Plug and Play Compatibility: DDC/CI, Mac OS X, sRGB, Windows 11/10
User convenience: Power On/Off, Menu/OK, Input/Up, Game Settings/Down, SmartImage game/Back
OSD Languages: Brazil Portuguese, Czech, Dutch, English, Finnish, French, German, Greek, Hungarian, Italian, Japanese, Korean, Polish, Portuguese, Russian, Spanish, Simplified Chinese, Swedish, Turkish, Traditional Chinese, Ukrainian
Other convenience: Kensington lock, VESA mount (100 x 100 mm), VESA bracket
MultiView: PIP/PBP mode, 2 x devices
KVM
Low blue light: Low blue light compliance*
Ambiglow: Ambiglow 3-sided

Stand

Height adjustment: 130 mm
Swivel: -/+ 30 degree
Tilt: -5/20 degree

Power

Power supply: Internal, 100–240 VAC, 50–60 Hz
Off mode: 0.3 W (typ.)
On mode: 130.9 W (typ.)
Standby mode: 0.5 W (typ.)
Power LED indicator: Operation - White, Standby mode - White (flashing)
Energy Label Class: G

Dimensions

Packaging in mm (W x H x D): 840 X 510 X 160 mm
Product without stand (mm): 717 X 419 X 92 mm
Product with stand (max height): 717 x 572 x 311 mm

Weight

Product with packaging (kg): 13.67 kg
Product with stand (kg): 9.65 kg
Product without stand (kg): 8.18 kg

Operating conditions

Altitude: Operation: +12,000 ft (3658 m), Non-operation: +40,000 ft (12,192 m)
Temperature range (operation): 0°C to 40 °C
MTBF: 30,000 hour(s)
Relative humidity: 20%-80 %
Temperature range (storage): -20°C to 60 °C

Sustainability

Environmental and energy: RoHS
Recyclable packaging material: 100 %
Specific Substances: Mercury free, PVC/BFR free housing
Post-consumer recycled plastics: 35%*

Compliance and standards

Regulatory Approvals: CB, CE Mark, ETL, TUV/ISO9241-307, PSB, EAC, EAEU RoHS, TUV-BAUART, BSMI, UKCA, EMF, FCC, ICES-003

Cabinet

Colour: White
Finish: Textured

What's in the box?

Cables: HDMI cable, DisplayPort cable, USB upstream cable, USB-C to USB-C cable, Power cable, VESA bracket
Monitor with stand
User Documentation



* Active pixels: 3840 (H) x 2160 (V). Number of total pixels: 3856 (H) x 2176 (V); extra pixels on each side, space reserved for pixel orbiting.
* Response time value equal to SmartResponse. The measurement pattern is 1 horizontal line.
* For best output performance, please always ensure that your graphic card is capable of achieving the maximum resolution and refresh rate of this Philips display.
* DCI-P3 Coverage based on CIE1976, sRGB Area based on CIE1931, NTSC Area and Adobe RGB Area based on CIE1976
* The ratio of display emission light in the range from 415 - 455 nm to the display emission of 400 - 500 nm shall be less than 50%.
* This monitor strives for sustainability: the base cover and headphone holder are made with 35% recycled plastic.
* The products and accessories listed on this leaflet may differ by country and region.
* The monitor may look different from feature images.