



Philips Evnia 4K UHD
gaming monitor
QD OLED gaming monitor

Evnia 8000

31.5" (80 cm)
3840 x 2160 (4K UHD)



32M2N8900

Gaming beyond innovation

This monitor produces incredible visuals. Its QD OLED panel is matched with 4K UHD resolution and Display HDR TrueBlack 400 certification, which makes it an absolute powerhouse of visual quality, even at 240 Hz.

Features designed for gamers' needs

- Tilt, swivel and height-adjust for an ideal viewing position

Features designed for gamers' needs

- Ambiglow intensifies entertainment with a halo of light
- LowBlue mode and Flicker-free easy-on-the eyes viewing
- Access and display multiple sources on two devices
- Enhanced audio with DTS Sound™

Built for fast action

- Ultra-fast 240 Hz refresh rate for virtually lag-free gaming

Immersive visuals

- Ultra Wide-Color wider range of colours for a vivid picture
- UltraClear 4K UHD (3840 x 2160) resolution for precision
- DisplayHDR™ True Black 400 delivers incredible shadow details
- True 10-bit display reproduces smoother gradients on visuals
- QD OLED for superior colours and vibrant visuals

EVNIA

PHILIPS

QD OLED gaming monitor
Evia 8000 31.5" (80 cm), 3840 x 2160 (4K UHD)

32M2N8900/00

Highlights

Ultra-fast 240 Hz refresh rate



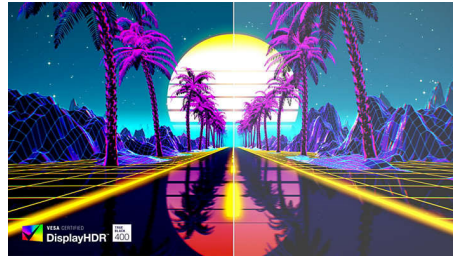
While playing the most intense, engaging and action-oriented games, the ultra-fast 240 Hz refresh rate creates an ultra-smooth, lag-free gaming experience. This Philips display redraws the screen image up to 240 times per second, effectively faster than a standard display. 240 Hz give superior motion and clarity to the visuals, especially for fast-paced games like FPS and racing games. With the Philips 240 Hz display, action sequences in gameplay look judder-free and ghost-free. You will experience deeper immersion and feel alive in the game.

UltraClear 4K UHD resolution



These Philips displays utilise high-performance panels to deliver UltraClear, 4K UHD (3840 x 2160) resolution images. Whether you are a demanding professional requiring extremely detailed images for CAD solutions, a user of 3D graphics applications or a financial wizard working on huge spreadsheets, Philips displays will make your images and graphics come alive.

DisplayHDR™ True Black 400



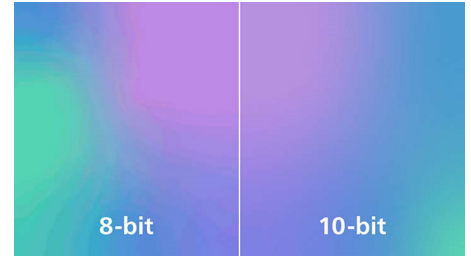
This Philips monitor is certified with VESA DisplayHDR™ True Black 400, delivering stunningly accurate shadow details with deeper blacks for a remarkable visual experience compared with conventional monitors of the same peak luminance. This Philips monitor comes with several HDR modes, each optimised for your usage scenarios: HDR Game, HDR Movie, HDR Photo and VESA DisplayHDR-certified level.

Ultra Wide-Color Technology



Ultra Wide-Color Technology delivers a wider spectrum of colours for a more brilliant picture. The Ultra Wide-Color wider "colour gamut" produces more natural-looking greens, vivid reds and deeper blues. Bring media entertainment, images and even productivity more alive with vivid colours from Ultra Wide-Color Technology.

True 10-bit colour depth



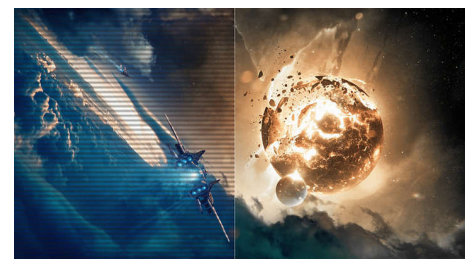
With this Philips true 10-bit colour display, you can see colour-critical professional work of exceptional colour accuracy that meets professional standards. Compared with conventional 8-bit colour displays, this Philips monitor produces a more natural transition between hues for smoother gradients.

QD OLED technology



QD-OLED represents a hybrid approach that marries OLED panels and quantum dot technology. By combining what's best of both, QD-OLED guarantees high contrast, deep blacks and unlimited viewing angles, with a higher peak brightness and more vibrant colours.

LowBlue mode and Flicker-free



Our LowBlue Mode and Flicker-free technology have been developed to reduce eye strain and fatigue often caused by long hours in front of a monitor.



Specifications

Connectivity

- Signal Input: HDMI 2.1 x 2, DisplayPort 1.4 x 1, USB-C x 1 (DP Alt mode, Video, Data)
- Sync Input: Separate Sync
- Audio (In/Out): Audio out
- HDCP: HDCP 1.4 (HDMI/DisplayPort), HDCP 2.2 (HDMI/DisplayPort), HDCP 2.3 (HDMI/DisplayPort)
- USB Hub: USB 3.2 Gen1, 5 Gbps; USB UP, USB-C upstream x 1 (DP Alt mode), USB-A downstream x 2 (with 1 for fast charge B.C 1.2)

Picture/Display

- Panel Size: 31.5"/80 cm
- Aspect ratio: 16:9
- Monitor Panel Type: QD OLED
- Pixel pitch: 0.1814 x 0.1814 mm
- Brightness: SDR: 250nits (APL 100%) nit, HDR: 450 (APL 10%) nit, HDR E/P: 1000 (APL 3%) nit
- Display colours: Colour support 1.07 billion colours (10-bit)
- Colour gamut (typical): DCI-P3:99%, sRGB: 147.5%, NTSC 120%, Adobe RGB 118%*
- Contrast ratio (typical): 1,500,000:1
- SmartContrast: Mega Infinity DCR
- Response time (typical): 0.03 ms (Grey to Grey)*
- Viewing angle: 178° (H)/178° (V), @ C/R > 10000
- Picture enhancement: SmartImage game
- Maximum resolution: 3840 x 2160 @ 240 Hz (HDMI/DP)
- Effective viewing area: 699.48 (H) x 394.73 (V) mm
- Scanning Frequency: 30k-510k Hz (H)/ 48-240 Hz (V)
- sRGB
- Delta E: <2 (sRGB)
- Flicker-free
- Pixel Density: 139.87 PPI
- LowBlue Mode
- Display Screen Coating: Anti-reflection, 2H

- Low Input Lag
- EasyRead
- Adaptive sync
- HDR: DisplayHDR True Black 400 certified
- Ambiglow: 3 sided
- Pixel format: RGB Q-Stripe*
- Clear MR Tier: 13,000
- Smart Sniper
- Stark Shadow Boost
- Smart Crosshair

Power Delivery

- Max power delivery: USB-C up to 65 W (5 V/3 A, 7 V/3 A, 9 V/3 A, 10 V/3 A, 12 V/3 A, 15 V/3 A, 20 V/4.5 A)
- Version: USB PD version 3.0

Convenience

- Built-in Speakers: 5 W x 2, DTS Sound
- Plug and Play Compatibility: DDC/CI, Mac OS X, sRGB, Windows 11/10
- User convenience: Power On/Off, Menu/OK, Input/Up, Game Settings/Down, SmartImage game/Back
- OSD Languages: Brazil Portuguese, Czech, Dutch, English, Finnish, French, German, Greek, Hungarian, Italian, Japanese, Korean, Polish, Portuguese, Russian, Spanish, Simplified Chinese, Swedish, Turkish, Traditional Chinese, Ukrainian
- Other convenience: Kensington lock, VESA mount (100 x 100 mm), VESA bracket
- MultiView: PIP/PBP mode, 2 x devices
- KVM
- Low blue light: Low blue light compliance*
- Ambiglow: Ambiglow 3-sided

Stand

- Height adjustment: 130 mm
- Swivel: +/- 30 degree
- Tilt: -5/20 degree

Power

- Power supply: Internal, 100–240 VAC, 50–60 Hz
- Off mode: 0.3 W (typ.)
- On mode: 130.9 W (typ.)
- Standby mode: 0.5 W (typ.)
- Power LED indicator: Operation - White, Standby mode - White (flashing)
- Energy Label Class: G

Dimensions

- Packaging in mm (W x H x D): 840 X 510 X 160 mm
- Product without stand (mm): 717 X 419 X 92 mm
- Product with stand (max height): 717 X 572 X 200 mm

Weight

- Product with packaging (kg): 13.67 kg
- Product with stand (kg): 9.65 kg
- Product without stand (kg): 8.18 kg

Operating conditions

- Altitude: Operation: +12,000 ft (3658 m), Non-operation: +40,000 ft (12,192 m)
- Temperature range (operation): 0°C to 40 °C
- MTBF: 30,000 hour(s)
- Relative humidity: 20%-80 %
- Temperature range (storage): -20°C to 60 °C

Sustainability

- Environmental and energy: RoHS
- Recyclable packaging material: 100 %
- Specific Substances: Mercury free, PVC/BFR free housing
- Post-consumer recycled plastics: 35%*

Compliance and standards

- Regulatory Approvals: CB, CE Mark, ETL, TUV/ISO9241-307, PSB, EAC, EAEU RoHS, TUV-BAUART, BSMI, UKCA, EMF, FCC, ICES-003

QD OLED gaming monitor
Evnia 8000 31.5" (80 cm), 3840 x 2160 (4K UHD)

32M2N8900/00

Specifications

Cabinet

- Colour: White
- Finish: Textured

What's in the box?

- Cables: HDMI cable, DisplayPort cable, USB

- upstream cable, USB-C to USB-C cable, Power cable, VESA bracket
- Monitor with stand
- User Documentation

Issue date 2024-07-20

© 2024 Koninklijke Philips N.V.
All Rights reserved.

Version: 7.7.1

Specifications are subject to change without notice.
Trademarks are the property of Koninklijke Philips N.V.
or their respective owners.

EAN: 87 12581 80634 7

www.philips.com

- * Active pixels: 3840 (H) x 2160 (V). Number of total pixels: 3856 (H) x 2176 (V); extra pixels on each side, space reserved for pixel orbiting.
- * Response time value equal to SmartResponse. The measurement pattern is 1 horizontal line.
- * For best output performance, please always ensure that your graphic card is capable of achieving the maximum resolution and refresh rate of this Philips display.
- * DCI-P3 Coverage based on CIE1976, sRGB Area based on CIE1931, NTSC Area and Adobe RGB Area based on CIE1976
- * The ratio of display emission light in the range from 415 - 455 nm to the display emission of 400 - 500 nm shall be less than 50%.
- * This monitor strives for sustainability: the base cover and headphone holder are made with 35% recycled plastic.
- * The products and accessories listed on this leaflet may differ by country and region.
- * The monitor may look different from feature images.