

PHILIPS

EVNIA



QD OLED gaming
monitor

Gaming Monitor

Evnia 8000

49 (48.9" / 124.3 cm diag.)

5120 x 1440 (Dual QHD)



49M2C8900

Gaming beyond innovation

Elevate your gaming experience with this monitor's incredible contrast-producing QD OLED display, 32:9 Curved SuperWide screen, and exclusive Ambiglow feature so you can set the mood of the room for each game.

Features designed for gamers needs

- AI-enhanced Ambiglow: for intensified entertainment
- Dynamic Lighting: Synchronize lighting on all devices.
- LowBlue mode and Flicker-free easy-on-the eyes viewing
- DTS Sound™ with 30W output: for enhanced audio

Built for fast action

- AMD FreeSync™ Premium Pro; smooth, low latency HDR gaming
- Ultra-fast 240 Hz refresh rate for virtually lag-free gaming
- Certified NVIDIA® G-SYNC® compatible for smooth fast gaming
- SmartImage game mode optimized for gamers
- VESA Certified ClearMR: for accurate blur testing

Immersive visuals

- Curved display design for more immersive experience
- DisplayHDR™ TrueBlack 400 delivers incredible shadow details
- True 10-bit display reproduces smoother gradients on visuals

Gaming Monitor

QD OLED gaming monitor

49M2C8900/69

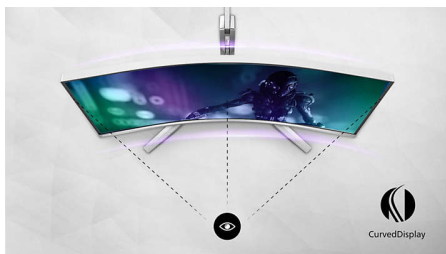
Highlights

QD OLED technology



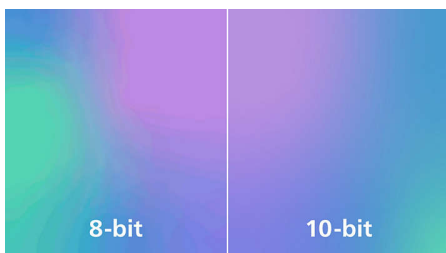
QD-OLED represents a hybrid approach that marries the OLED panels and quantum dot technology. By combining what's best of both, QD-OLED guarantees high contrast, deep blacks, and unlimited viewing angles, with the higher peak brightness and more vibrant colors.

Curved display design



Desktop monitors offer a personal user experience, which suits a curve design very well. The curved screen provides a pleasant yet subtle immersion effect, which focuses on you at the center of your desk.

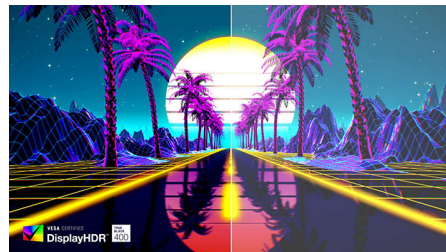
True 10-bit color depth



With this Philips true 10-bit color display, you can see color critical professional work of exceptional color accuracy and meeting professional

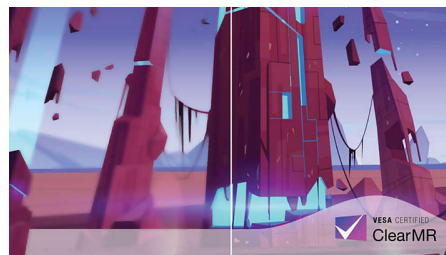
standards. Compared with conventional 8-bit color display, this Philips monitor produces a more natural transition between hues for smoother gradients.

DisplayHDR™ True Black 400



This Philips monitor is certified with VESA DisplayHDR™ True Black 400. Delivering stunningly accurate shadow detail with deeper blacks for a remarkable visual experience compared with conventional monitors of the same peak luminance. This Philips monitor comes with several HDR modes, each optimized for your usage scenarios: HDR Game, HDR Movie, HDR Photo, and VESA DisplayHDR certified level.

VESA ClearMR 13000



Previously, methods to test blur on screen were measured through MRPT. VESA Certified ClearMR acts as an alternative to MRPT and is designed to reflect the true nature of blur through digital high-speed camera testing. For monitors that are sent in and certified through VESA Certified ClearMR, you can rest assured that you will have an accurate assessment of the monitor's blur quality. Each certification is defined through a CMR range; with this monitor

being ClearMR 13000 classified, it has one of the highest classifications of image quality, meaning less overall blur.

DTS Sound™ with 30W output



Your elevated sound experience has arrived. This monitor is equipped with four 7.5 watt speakers, ultimately adding up to a 30W output sound system. In addition to the extra wattage, the DTS Sound speakers provide a warm, detailed, and enhanced audio experience that will ultimately make your gaming experience more immersive.

AI-enhanced Ambiglow



Our AI-enhanced processor analyzes the incoming image content and continuously adapts the color and brightness of the emitted light to match the image. This feature adds a new dimension to your viewing experience. The innovative Ambiglow uses its AI capabilities to create a truly immersive and customizable gaming experience. From filling your gaming room with color to feeling like you are part of the game, the AI-enhanced Ambiglow is made to make your gaming experience the best it's ever been by combining intelligence, color, and light.

QD OLED



VESA CERTIFIED
DisplayHDR 400

240Hz

NVIDIA
G-SYNC

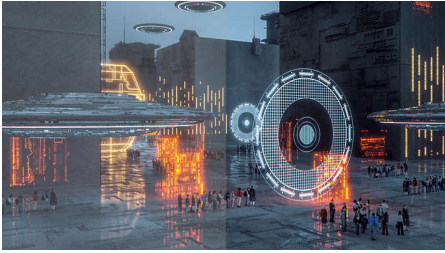
VESA CERTIFIED
ClearMR 13000

dts
Sound



Highlights

SmartImage Game mode



The new Philips gaming display has quick access OSD fine tuned for gamers, offering you multiple options. "FPS" mode (First person shooting) improves dark themes in games, allowing you to see hidden objects in dark areas. "Racing" mode adapts display with fastest response time, high color, along with image adjustments. "RTS" mode (Real time strategy) has a special SmartFrame mode which enables highlighting of specific area and allows for size and image

adjustments. Gamer 1 and Gamer 2 enable you to save personal customized settings based on different games, ensuring best performance.

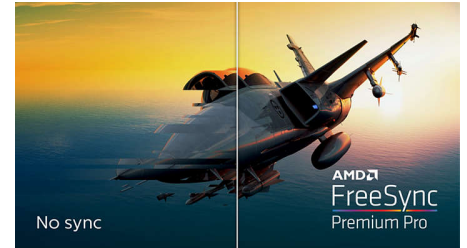
Dynamic Lighting



This feature is a Microsoft certification program that enables with users Windows 11 to synchronize and manage the RGB lighting of all their monitors and peripherals from one menu. By doing this, the Dynamic Lighting feature creates a complete RGB lighting ecosystem with

Philips Evnia Ambiglow across all devices that ultimately caters to a customizable user experience.

AMD FreeSync™ Premium Pro



Gaming shouldn't be a choice between choppy gameplay or broken frames. AMD FreeSync™ Premium Pro provides the true HDR gaming experience: a combination of smooth gaming at peak performance, and exceptional high dynamic range visuals while still maintaining low latency.

Specifications

Picture/Display

Panel Size: 48.9 inch / 124.3 cm

Aspect ratio: 32:9

Monitor Panel Type: QD OLED

Pixel pitch: 0.233 x 0.233 mm

Brightness: SDR: 250 (APL 100%) nit, HDR: 450 (APL 10%) nit, HDR E/P: 1000 (APL 3%) nit

Display colors: Color support 1.07 billion colors (10 bit)

Color gamut (typical): NTSC 127.4%*, sRGB 153.1%*, Adobe RGB 125.2%*

Color gamut (min.): DCI-P3: 99%*

Contrast ratio (typical): 1,500,000:1

SmartContrast: Mega Infinity DCR

Response time (typical): 0.03 ms (Gray to Gray)*

Viewing angle: 178° (H) / 178° (V), @ C/R > 10

Picture enhancement: SmartImage game

Maximum resolution: 5120 x 1440 @ 240 Hz

Effective viewing area: 1196.7 (H) x 339.2 (V) - at a 1800R curvature*

Scanning Frequency: 30 - 388 kHz (H) / 48 - 240 Hz (V)

sRGB

Delta E: < 2 (sRGB)

Flicker-free

Pixel Density: 108.77 PPI

LowBlue Mode

Display Screen Coating: Anti-reflection, 2H

Low Input Lag

EasyRead

AMD FreeSync™ technology: Premium Pro G-SYNC

HDR: DisplayHDR True Black 400 certified

Ambiglow: 3-sided

Pixel format: RGB Q-Stripe*

Windows Dynamic Lighting

Connectivity

Signal Input: HDMI 2.1 x 2, DisplayPort 1.4 x 1, USB-C x 1 (DP Alt mode, Power Delivery)

Sync Input: Separate Sync

Audio (In/Out): Audio out

HDCP: HDCP 1.4 (HDMI / DisplayPort / USB-C), HDCP 2.2 (HDMI / DisplayPort / USB-C), HDCP 2.3 (HDMI / DisplayPort / USB-C)

USB Hub: USB version 3.2 Gen1 / 5Gbps, USB-B upstream x 1, USB-A downstream x 4 (with 2 for fast charge B.C 1.2)

Power Delivery

Max power delivery: Up to 90W (5V/3A, 7V/3A, 9V/3A, 10V/3A, 12V/3A, 15V/3A, 20V/4.5A)

Version: USB PD version 3.0

Convenience

Built-in Speakers: 7.5 W x 4, DTS

Plug & Play Compatibility: DDC/CI, Mac OS X, sRGB, Windows 11 / 10 / 8.1 / 8

User convenience: Power On/Off, Menu/OK, Input/Up, Game Settings/Down, SmartImage game/Back

OSD Languages: Brazil Portuguese, Czech, Dutch, English, Finnish, French, German, Greek, Hungarian, Italian, Japanese, Korean, Polish, Portuguese, Russian, Spanish, Simplified Chinese, Swedish, Turkish, Traditional Chinese, Ukrainian

Other convenience: Kensington lock, VESA mount (100x100mm)

MultiView: PIP/PBP mode, 2x devices

KVM

Low blue light: Low blue light compliance*

Sound

Output Power: 30 W, 2.2 Channel

Sound Enhancement: DTS Sound

Speaker Configuration: 7.5 W x 2 tweeters, 7.5 W x 2 woofers with flow port

Stand

Height adjustment: 120 mm

Swivel: +/- 20 degree

Tilt: -5/15 degree

Power

Power supply: Internal, 100-240VAC, 50-60Hz

Off mode: 0.3 W (typ.)

On mode: 163.35 W (typ.)

Standby mode: 0.5 W (typ.)

Power LED indicator: Operation - White, Standby mode - White (blinking)

Energy Label Class: G

Dimensions

Packaging in mm (WxHxD): 1290 x 300 x 475 mm

Product without stand (mm): 1195 x 369 x 181 mm

Product with stand(max height): 1195 x 544 x 359 mm

Weight

Product with packaging (kg): 19.41 kg

Product with stand (kg): 13.96 kg

Product without stand (kg): 10.82 kg

Operating conditions

Altitude: Operation: +12,000ft (3,658m), Non-operation: +40,000ft (12,192m)

Temperature range (operation): 0°C to 40 °C

MTBF: 30,000 hour(s)

Relative humidity: 20%-80 %

Temperature range (storage): -20°C to 60 °C

Sustainability

Environmental and energy: RoHS

Recyclable packaging material: 100 %

Specific Substances: Mercury free, PVC / BFR free housing

Compliance and standards

Regulatory Approvals: CB, CE Mark, FCC Class B, ICES-003, CU-EAC, EAEU RoHS, TUV/ISO9241-307, TUV-BAUART, cETLus

Cabinet

Color: White

Finish: Textured

What's in the box?

Accessory: Remote control, VESA bracket

* Radius of the arc of the display curvature in mm

* Active pixels: 5120(H) x 1440 (V). Number of total pixels: 5136(H) x 1456 (V); extra 8 pixels on each side, space reserved for pixel orbiting.

* Response time value equal to SmartResponse. The measurement pattern is 1 horizontal line.

* 2020 Advanced Micro Devices, Inc. All rights reserved. AMD, the AMD Arrow logo, AMD FreeSync™ and combinations thereof are trademarks of Advanced Micro Devices, Inc. Other product names used in this publication are for identification purposes only and may be trademarks of their respective companies.

* Make sure to update NVIDIA® G-SYNC® driver to the latest version, see more information on NVIDIA website: <https://www.nvidia.com/>

* G-Sync compatible only supports VRR (Variable Refresh Rate) from 50Hz - 240Hz.

* Make sure your graphic card supports NVIDIA® G-SYNC®

* NVIDIA® G-SYNC® support interface: DisplayPort

* DCI-P3 Coverage based on CIE1976

* NTSC Area based on CIE1976

* sRGB Area based on CIE1931

* Adobe RGB Area based on CIE1976

* The ratio of display emission light in the range from 415 - 455 nm to the display emission of 400 - 500 nm shall be less than 50%.

* For best output performance, please always ensure that your graphic card is capable of achieving the maximum resolution and refresh rate of this Philips display.

* For USB-C power and charging function, your Notebook/device must support USB-C standard Power Delivery specifications. Please check with your Notebook user manual or manufacturer for more details.

* For Video transmission via USB-C, your Notebook/device must support USB-C DP Alt mode

* The monitor may look different from feature images.

* The products and accessories listed on this leaflet may differ by country and region.

