

PHILIPS

EVNIA



QD OLED gaming
monitor

Curved Gaming
Monitor

Evnia 6000

34" (86.36 cm)

3440 x 1440 (WQHD)



34M2C6500

Your gaming experience to the utmost

This monitor is built with features that make incredible visuals. With VESA ClearMR 9000 and DisplayHDR TrueBlack 400, this gaming monitor will produce imagery with deep contrast and sharp definition.

Features designed for gamers' needs

- Evnia Precision Centre: Maximise Your Gaming Experience
- AI-enhanced Ambiglow: for intensified entertainment
- Dynamic Lighting: Synchronise lighting on all devices.
- MultiView enables simultaneous dual connection and view
- Smart Crosshair: for better aim and more fun

Built for fast action

- SmartImage game mode optimised for gamers
- VESA ClearMR 9000: for the highest image quality

Immersive visuals

- Curved display design for a more immersive experience
- Ultra Wide-Color wider range of colours for a vivid picture
- CrystalClear images with UltraWide QHD 3440 x 1440 pixels
- DisplayHDR™ True Black 400 delivers incredible shadow details
- QD OLED for superior colours and vibrant visuals

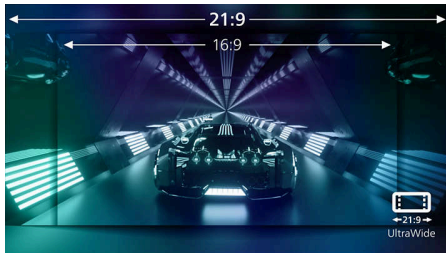
Curved Gaming Monitor

QD OLED gaming monitor

34M2C6500/39

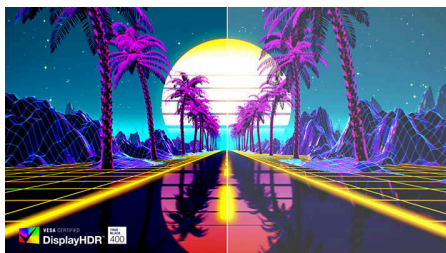
Highlights

UltraWide CrystalClear images



These Philips screens deliver Crystal Clear, UltraWide Quad HD 3440 x 1440 pixel images. Utilising high-performance panels with high-density pixel count and 178/178 wide viewing angles, these new displays will make your images and graphics come alive. The UltraWide 21:9 format enables more productivity with more room for side-by-side comparisons and more viewable spreadsheet columns. Whether you are a demanding professional requiring extremely detailed information for CAD-CAM solutions or a financial wizard working on huge spreadsheets, Philips displays deliver Crystal Clear images.

DisplayHDR™ True Black 400



This Philips monitor is certified with VESA DisplayHDR™ True Black 400, delivering stunningly accurate shadow details with deeper blacks for a remarkable visual experience compared with conventional monitors of the same peak luminance. This Philips monitor comes with several HDR modes, each optimised for your usage scenarios: HDR Game, HDR Movie, HDR Photo and VESA DisplayHDR-certified level.

Curved display design



Desktop monitors offer a personal user experience, which suits a curved design very well. The curved screen provides a pleasant yet subtle immersion effect, which focuses on you at the centre of your desk.

QD OLED technology



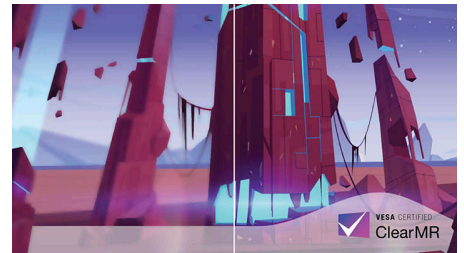
QD-OLED represents a hybrid approach that marries OLED panels and quantum dot technology. By combining what's best of both, QD-OLED guarantees high contrast, deep blacks and unlimited viewing angles, with a higher peak brightness and more vibrant colours.

Ultra Wide-Color Technology



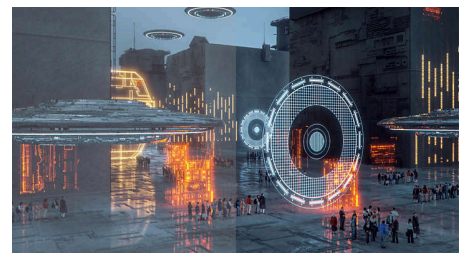
Ultra Wide-Color Technology delivers a wider spectrum of colours for a more brilliant picture. The Ultra Wide-Color wider "colour gamut" produces more natural-looking greens, vivid reds and deeper blues. Bring media entertainment, images and even productivity more alive with vivid colours from Ultra Wide-Color Technology.

VESA ClearMR 9000



Previously, methods to test blurry image quality were measured through MRPT. VESA Certified ClearMR acts as an alternative to MRPT in which blur is tested with a digital high-speed camera. For monitors that are sent in and certified through VESA Certified ClearMR, you can rest assured that you will have an accurate assessment of the monitor's blur quality. Each certification is defined through a CMR range, with the highest tier being VESA ClearMR 9000. As this monitor is certified as ClearMR 9000, it has the highest classification of image quality, meaning the least amount of overall blur.

SmartImage Game mode

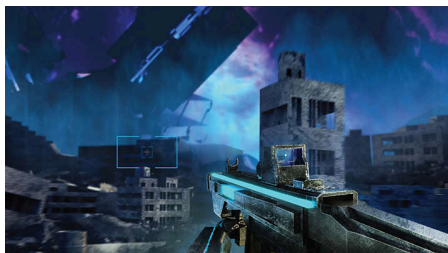


The new Philips gaming display has quick-access OSD fine-tuned for gamers, offering you multiple options. "FPS" mode (First person shooting) improves dark themes in games, allowing you to see hidden objects in dark areas. "Racing" mode adapts the display with the fastest response time and high colour, along with image adjustments. "RTS" mode (Real-time strategy) has a special SmartFrame mode that enables highlighting of specific area and allows for size and image adjustments. Gamer 1 and Gamer 2 enable you to save personal customised settings based on different games, ensuring best performance.



Highlights

Smart Crosshair



Colour of Crosshair is set by default. When Smart Crosshair is on, the colour will change as a complementary colour to the background colour. Smart Crosshair enhances the aiming accuracy so you can spot the enemies more easily.

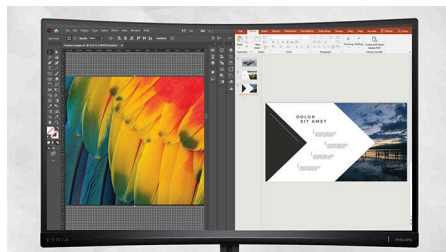
AI-enhanced Ambiglow



Our AI-enhanced processor analyses the incoming image content and continuously adapts the colour and brightness of the emitted light to match the image. This feature adds a new dimension to your viewing experience. The innovative Ambiglow uses its AI capabilities to create a truly immersive and customisable gaming experience. From filling your gaming room with colour to feeling like you are part of

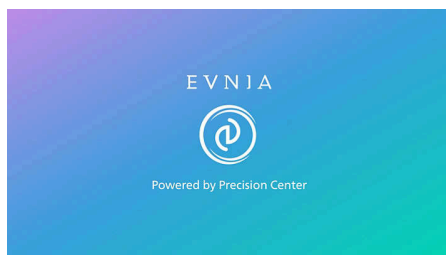
the game, the AI-enhanced Ambiglow is made to make your gaming experience the best it's ever been by combining intelligence, colour and light.

MultiView technology



With the ultra-high resolution Philips MultiView display, you can now experience a world of connectivity. MultiView enables active dual connect and view so that you can work with multiple devices like a PC and notebook simultaneously, for complex multitasking.

Evnia Precision Centre



Evnia Precision Centre is an easy-to-use software designed to optimise and personalise your Evnia monitor. Whether you're a casual or competitive

gamer, it offers a wide range of customisation options to match your unique gaming style. With intuitive controls and seamless navigation, Evnia Precision Centre gives you full control, providing everything you need to elevate your gaming to the next level — right at your fingertips.

Dynamic Lighting



This feature is a Microsoft certification program that enables users with Windows 11 to synchronise and manage the RGB lighting of all of their monitors and peripherals from one menu. By doing this, the Dynamic Lighting feature creates a complete RGB lighting ecosystem with Philips Evnia Ambiglow across all devices that ultimately caters to a customisable user experience.



WQHD



CurvedDisplay



Ultra Wide Color



ClearMR 9000

Curved Gaming Monitor

QD OLED gaming monitor

34M2C6500/39

Specifications

Picture/Display

Panel Size: 34 inch/86.36 cm

Aspect ratio: 21:9

Monitor Panel Type: QD OLED

Pixel pitch: 0.2315 x 0.2315 mm

Brightness: SDR: 250 (APL 100%) nits, HDR: 450

(APL 10%) nits, HDR E/P: 1000 (APL 3%) nit

Display colours: Colour support 1.07 billion colours (10 bit)*

Colour gamut (typical): sRGB 148.8%*, Adobe RGB 97.8%*

Colour gamut (min.): DCI-P3: 99.3%*

Contrast ratio (typical): 1,000,000:1

SmartContrast: Mega Infinity DCR

Response time (typical): 0.03 ms (Grey to Grey)*

Viewing angle: 178° (H)/178° (V), @ C/R > 10000

Picture enhancement: SmartImage game

Maximum resolution: HDMI:

3440 x 1440 @ 100 Hz, DP:

3440 x 1440 @ 175 Hz

Effective viewing area: 800.1 (H) x 337.1 (V) - at a 1800R curvature*

Scanning Frequency: HDMI: 30k - 160 kHz (H)/48 - 100 Hz (V), DP: 30k - 275 kHz (H)/48 - 175 Hz (V) sRGB

Delta E: <2 (sRGB)

Flicker-free

LowBlue Mode

Display Screen Coating: Anti-reflection, 2H

Low Input Lag

EasyRead

Adaptive sync

HDR: DisplayHDR True Black 400 certified

Ambiglow: 3 sided

Pixel format: RGB Q-Stripe*

Smart Crosshair

Stark ShadowBoost

Smart Sniper

Shadow Boost

MultiView: PBP/PIP, 2 x devices

Low blue light: Low blue light compliance*

ClearMR Tier: 9000

Windows Dynamic Lighting

Connectivity

Signal Input: HDMI 2.0 x 2, DisplayPort 1.4 x 1

Sync Input: Separate Sync

Audio (In/Out): Headphone out

HDCP: HDCP 1.4 (HDMI/DisplayPort), HDCP 2.2 (HDMI/DisplayPort)

USB Hub: USB 3.2 Gen 1/5 Gbps, USB-B upstream x 1, USB-A downstream x 2 (with 1 for fast charge)

Convenience

Plug and Play Compatibility: DDC/CI, Mac OS X, sRGB, Windows 11/10

User convenience: Power On/Off, Menu/OK, Input/Up, Game Settings/Down, SmartImage game/Back

OSD Languages: Brazil Portuguese, Czech, Dutch, English, Finnish, French, German, Greek, Hungarian, Italian, Japanese, Korean, Polish, Portuguese, Russian, Spanish, Simplified Chinese, Swedish, Turkish, Traditional Chinese, Ukrainian

Other convenience: Kensington lock, VESA mount (100 x 100 mm), VESA bracket

MultiView: PIP/PBP mode, 2 x devices

KVM

Low blue light: Low blue light compliance*

Stand

Height adjustment: 130 mm

Swivel: -/+ 30 degree

Tilt: -5/20 degree

Power

Power supply: Internal, 100–240 VAC, 50–60 Hz

Off mode: 0.3 W (typ.)

On mode: 98.9 W (typ.)

Standby mode: 0.5 W (typ.)

Power LED indicator: Operation - White, Standby mode - White (flashing)

Dimensions

Packaging in mm (W x H x D):

900 x 525 x 226 mm

Product without stand (mm):

813 x 367 x 164 mm

Product with stand (max height):

813 x 555 x 311 mm

Weight

Product with packaging (kg): 10.64 kg

Product with stand (kg): 7.72 kg

Product without stand (kg): 6.15 kg

Operating conditions

Altitude: Operation: +12,000 ft (3658 m), Non-operation: +40,000 ft (12,192 m)

Temperature range (operation): 0°C to 35 °C

MTBF: 30,000 hour(s)

Relative humidity: 20%-80 %

Temperature range (storage): -20°C to 60 °C

Sustainability

Environmental and energy: RoHS

Recyclable packaging material: 100 %

Specific Substances: Mercury free, PVC/BFR free housing

Post-consumer recycled plastics: 85%*

Recyclable packaging material

Compliance and standards

Regulatory Approvals: CB, CE Mark, ETL,

TUV/ISO9241-307, TUV-BAUART, EAC, EAEU

RoHS, MEPS, PSB, EMF, FCC, ICES-003, CEC, UKCA

Cabinet

Colour: Dark Slate

Finish: Textured

What's in the box?

Cables: HDMI cable, DisplayPort cable, USB upstream cable, Power cable, Vesa bracket

Monitor with stand

User Documentation

* For best output performance, please always ensure that your graphic card is capable of achieving the maximum resolution and refresh rate of this Philips display.

* The max resolution is 8 bits with a 4:4:4 ratio.

* DCI-P3 Coverage based on CIE1976.

* sRGB Area based on CIE1931

* Adobe RGB Coverage based on CIE 1976

* Response time value equal to SmartResponse. The measurement pattern is 1 horizontal line.

* Active pixels: 3440 (H) x 1440 (V). Number of total pixels: 3456 (H) x 1456 (V); extra 8 pixels on each side, space reserved for pixel orbiting.

* The ratio of display emission light in the range from 415 - 455 nm to the display emission of 400 - 500 nm shall be less than 50%.

* 10 bit brightness can only be reached at 144 Hz with WQHD resolution through a DisplayPort connection or at 60 Hz with WQHD resolution via a HDMI connection.

* This monitor strives for sustainability: the stand's feet are made with 35% recycled plastic and the monitor's chassis is made up of 85% post-consumer recycled plastic.

* The products and accessories listed on this leaflet may differ by country and region.

* The monitor may look different from feature images.

