



Philips Evnia Gaming
Monitor
QD OLED gaming monitor

Evnia 8000

26.5" (67.3 cm)
2560 x 1440 (Quad HD)



27M2N8500

Gaming beyond innovation

This monitor is built for gaming at high speeds. Its 360 Hz refresh rates, QD OLED panel and DisplayHDR TrueBlack 400 certification make it a combination of incredible speed and premium picture quality.

Features designed for gamers' needs

- Tilt, swivel and height-adjust for an ideal viewing position

Built for fast action

- 360 Hz refresh rate: For ultra-fast and ultra-clear gaming.

Features designed for gamers' needs

- SmartImage game mode optimised for gamers
- Ambiglow intensifies entertainment with a halo of light
- LowBlue mode and Flicker-free easy-on-the eyes viewing
- Smart Crosshair: for better aim and more fun

Built for fast action

- Low input lag reduces time delay between devices to monitor

Immersive visuals

- Crystal clear images with Quad HD 2560 x 1440 pixels
- DisplayHDR™ True Black 400 delivers incredible shadow details

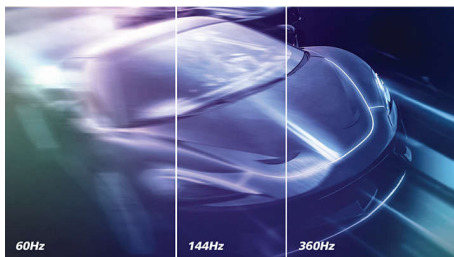
EVNIA

PHILIPS

QD OLED gaming monitor
Evnia 8000 26.5" (67.3 cm), 2560 x 1440 (Quad HD)

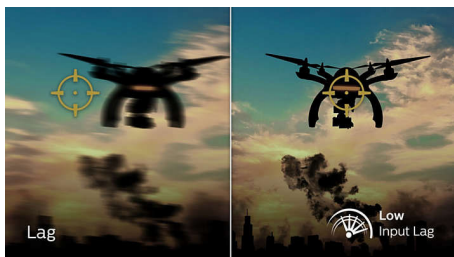
Highlights

360 Hz refresh rate



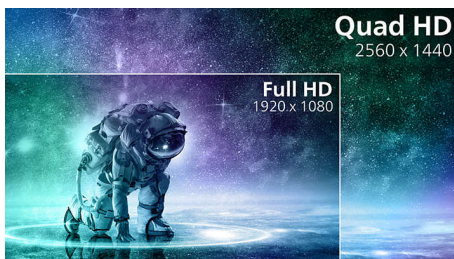
Be prepared to game up to 360 Hz with an accompanying picture definition that will leave a WOW factor. Reach goals and hit targets faster with show-stopping clarity: games will appear clean and crisp while you speed through levels and race through scenes.

Low input lag



Input lag is the amount of time that elapses between performing an action with connected devices and seeing the result on screen. Low input lag reduces the time delay between entering a command from your devices to monitor, greatly improving play on twitch-sensitive video games, particularly important for playing fast-paced, competitive games.

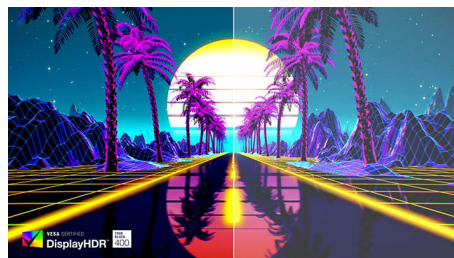
CrystalClear images



These Philips screens deliver Crystal Clear, Quad HD 2560 x 1440 or 2560 x 1080 pixel images. Utilising high-performance panels with a high-density pixel count, enabled by high bandwidth sources like USB-C, Displayport

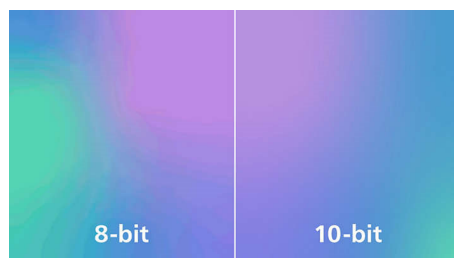
and HDMI, these new displays will make your images and graphics come alive. Whether you are a demanding professional who requires extremely detailed information for CAD-CAM solutions and uses 3D graphic applications, or a financial wizard working on huge spreadsheets, Philips displays will give you Crystal Clear images.

DisplayHDR™ True Black 400



This Philips monitor is certified with VESA DisplayHDR™ True Black 400, delivering stunningly accurate shadow details with deeper blacks for a remarkable visual experience compared with conventional monitors of the same peak luminance. This Philips monitor comes with several HDR modes, each optimised for your usage scenarios: HDR Game, HDR Movie, HDR Photo and VESA DisplayHDR-certified level.

True 10-bit colour depth



With this Philips true 10-bit colour display, you can see colour-critical professional work of exceptional colour accuracy that meets professional standards. Compared with conventional 8-bit colour displays, this Philips monitor produces a more natural transition between hues for smoother gradients.

27M2N8500/00

QD OLED technology



QD-OLED represents a hybrid approach that marries OLED panels and quantum dot technology. By combining what's best of both, QD-OLED guarantees high contrast, deep blacks and unlimited viewing angles, with a higher peak brightness and more vibrant colours.

LowBlue mode and Flicker-free



Our LowBlue Mode and Flicker-free technology have been developed to reduce eye strain and fatigue often caused by long hours in front of a monitor.

Ambiglow technology



Ambiglow adds a new dimension to your viewing experience. The innovative Ambiglow technology enhances the content on the screen by creating a halo of light from the monitor. Its fast processor analyses the incoming image content and continuously adapts the colour and brightness of the emitted light to match the image. Especially suited for watching movies, sports or playing games, Philips Ambiglow offers you a unique and immersive viewing experience.



QD OLED



Specifications

Connectivity

- Signal Input: HDMI 2.1 x 2, DisplayPort 1.4 x 1, USB-B x 1
- Sync Input: Separate Sync
- Audio (In/Out): Headphone out
- HDCP: HDCP 1.4 (HDMI/DisplayPort), HDCP 2.2 (HDMI/DisplayPort)
- USB Hub: USB-B upstream x 1, USB-A downstream x 2 (downstream with x 1 fast charge B.C 1.2), USB 3.2 Gen 1/5 Gbps

Picture/Display

- Panel Size: 26.5 inch/67.3 cm
- Aspect ratio: 16:9
- Monitor Panel Type: QD OLED
- Pixel pitch: 0.2292 x 0.2292 mm
- Brightness: SDR: 250 (APL 100%) nit, HDR: 450 (APL 10%) nit, HDR E/P: 1000 (APL 3%) nit
- Display colours: Colour support 1.07 billion colours (10-bit)
- Colour gamut (typical): DCI-P3:98.5%, sRGB: 147.5%, NTSC 120%, Adobe RGB 118%*
- Contrast ratio (typical): 1,500,000:1
- SmartContrast: Mega Infinity DCR
- Response time (typical): 0.03 ms (Grey to Grey)*
- Viewing angle: 178° (H)/178° (V), @ C/R > 10000
- Picture enhancement: SmartImage game
- Maximum resolution: HDMI/DP: 2560 x 1440 @ 360 Hz
- Effective viewing area: 590.42 (H) x 333.72 (V) mm
- Scanning Frequency: 30–510 kHz (H)/48–360 Hz (V)
- sRGB
- Delta E: <2 (sRGB)
- Flicker-free
- Pixel Density: 110.84 PPI
- LowBlue Mode
- Display Screen Coating: Anti-reflection, 2H
- SmartUniformity: 93–105%
- Low Input Lag
- EasyRead
- Adaptive sync
- HDR: DisplayHDR True Black 400 certified
- Ambiglow: 3 sided
- Pixel format: RGB Q-Stripe*
- Smart Sniper
- Clear MR Tier: 13,000
- Stark Shadow Boost
- Smart Crosshair
- Shadow Boost

Convenience

- Built-in Speakers: 5 W x 2
- Plug and Play Compatibility: DDC/CI, Mac OS X, sRGB, Windows 11/10
- User convenience: Power On/Off, Menu/OK, Input/Up, Game Settings/Down, SmartImage game/Back
- OSD Languages: Brazil Portuguese, Czech, Dutch, English, Finnish, French, German, Greek, Hungarian, Italian, Japanese, Korean, Polish, Portuguese, Russian, Spanish, Simplified Chinese,

- Swedish, Turkish, Traditional Chinese, Ukrainian
- Other convenience: Kensington lock, VESA mount (100 x 100 mm), VESA bracket, LowBlue Mode
- MultiView: PIP/PBP mode, 2 x devices
- Low blue light: Low blue light compliance*

Stand

- Height adjustment: 130 mm
- Swivel: -/+ 20 degree
- Tilt: -5/20 degree

Power

- Power supply: Internal, 100–240 VAC, 50–60 Hz
- Off mode: 0.3 W (typ.)
- On mode: 83.70 W (typ.)
- Standby mode: 0.5 W (typ.)
- Power LED indicator: Operation - White, Standby mode - White (flashing)
- Energy Label Class: G

Dimensions

- Packaging in mm (W x H x D): 780 x 455 x 141 mm
- Product without stand (mm): 609.3 x 357.7 x 61 mm
- Product with stand (max height): 609.3 x 513.7 x 274.5 mm

Weight

- Product with packaging (kg): 11.01 kg
- Product with stand (kg): 6.00 kg
- Product without stand (kg): 7.35 kg

Operating conditions

- Altitude: Operation: +12,000 ft (3658 m), Non-operation: +40,000 ft (12,192 m)
- Temperature range (operation): 0°C to 40 °C
- MTBF: 30,000 hour(s)
- Relative humidity: 20%-80 %
- Temperature range (storage): -20°C to 60 °C

Sustainability

- Environmental and energy: RoHS
- Recyclable packaging material: 100 %
- Specific Substances: Mercury free, PVC/BFR free housing
- Post-consumer recycled plastics: 35%*

Compliance and standards

- Regulatory Approvals: CB, CE Mark, ETL, CEC, TUV/ISO9241-307, TUV-BAUART, EAC, EAEU RoHS, CEL, CCC, UKCA, EMF, FCC, ICES-003

Cabinet

- Colour: White
- Finish: Textured

What's in the box?

- Cables: DP cable, HDMI cable, USB Upstream (B-A), Power cable
- Monitor with stand
- User Documentation

* Response time value equal to SmartResponse. The measurement pattern is 1 horizontal line.

* DCI-P3 Coverage based on CIE1976, sRGB Area based on CIE1931, NTSC Area and Adobe RGB Area based on CIE1976

* Active pixels: 2560 (H) x 1440 (V). Number of total pixels: 2576 (H) x 1456 (V); extra pixels on each side, space reserved for pixel orbiting.

* The ratio of display emission light in the range from 415 - 455 nm to the display emission of 400 - 500 nm shall be less than 50%.

* For best output performance, please always ensure that your graphic card is capable of achieving the maximum resolution and refresh rate of this Philips display.

* This monitor strives for sustainability: the base is made with 35% recycled plastic.

* The monitor may look different from feature images.

* The products and accessories listed on this leaflet may differ by country and region.