

PHILIPS

Ultrasound

Gynecology

Quick visualization for confident answers

Enhance clinical confidence in gynecology

Symptoms such as pelvic pain and abnormal bleeding can create anxiety for your patients, and they look to you for fast, confident answers. For ultrasound to be a useful first step, it needs to provide the premium image quality and tools for analysis that can help guide accurate diagnosis and management. Philips ultrasound offers this, along with workflow efficiency from scanning through report generation to help you meet the demands of your day.

Elevates tissue definition and clarity to new levels

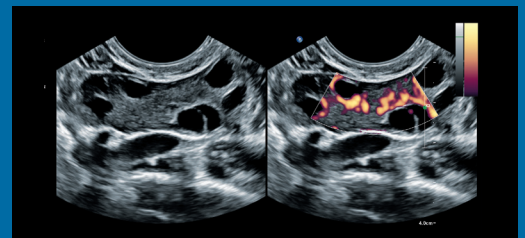
PureWave transducers with xRES Pro offer both enhanced penetration and excellent detail resolution for even the most technically difficult patients.

C5-1 PureWave transducer (multicenter study results*)

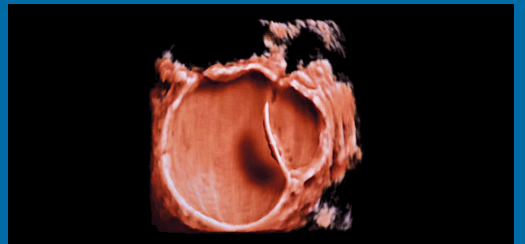
- Sonographers felt that they had to push less in 48% to 86% of cases
- Marked improvement in color sensitivity in 31% to 86% of cases
- Exam times were reduced by 2% to 38%



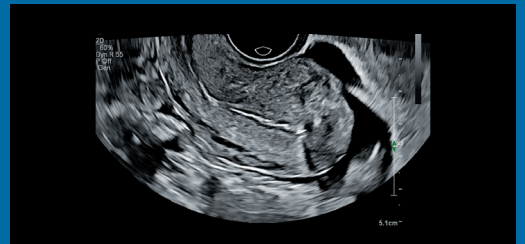
* A three-site clinical study using the EPIQ ultrasound system compared the C5-1 PureWave transducer to the C9-2 PureWave transducer. Each site conducted 25 abdominal scans on technically difficult patients using both the C5-1 and C9-2 transducers, and reported on their findings. Europe: Prof. Michel Claudon, Centre Hospitalier Universitaire Hospital de Brabois, Nancy, France; Prof. Dirk Clevert, Ludwig Maximilians, Universität München, Munich University Hospital, Munich, Germany; Prof. Paul Sidhu, King's College Hospital, London, England. Feb. 2015.



Follicular cysts with the 3D9-3v endovaginal transducer



Simple cyst with septation visualized using 3D TrueVue



Uterus with endometrium and free fluid with the C9-4v endovaginal transducer



Complex ovarian cyst with the PureWave C10-3v endovaginal transducer

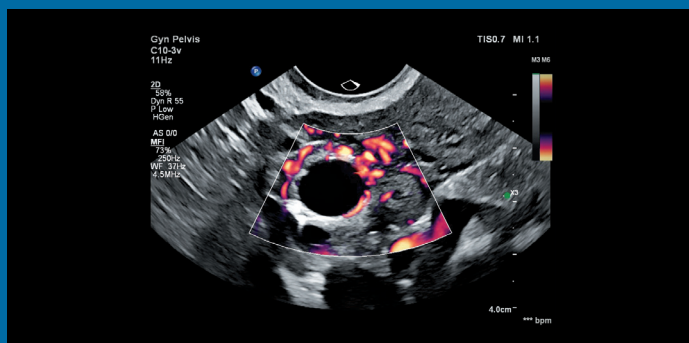
Challenging is no longer quite so challenging

Capture remarkable detail in perfusion

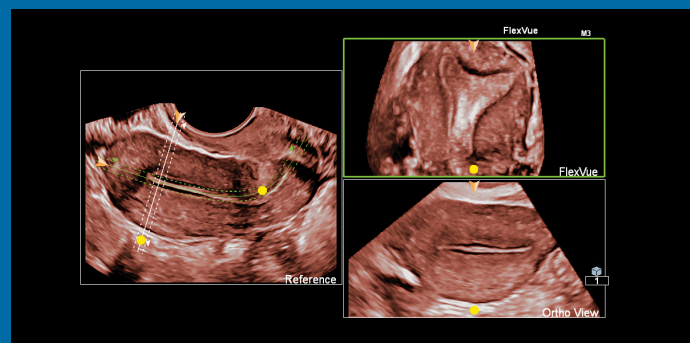
MicroFlow Imaging High Definition (MFI HD) is a proprietary enhancement to color power angio (CPA) mode designed to detect low-volume, low-velocity blood flow found in uterine and ovarian vasculature with high resolution and minimal artifacts. It offers both high frame rates and 2D image quality.

Visualize 3D volumes with ease

Quickly and easily visualize orthogonal planes of section simultaneously within 3D volumes. FlexVue with Orthogonal View is a highly versatile tool for visualization of the difficult anatomical views that are essential to diagnosis of gynecological pathology.



MFI HD provides low-flow, low-velocity detection of ovarian perfusion



FlexVue with Orthogonal View shows curved uterus with the 3D9-3v transducer

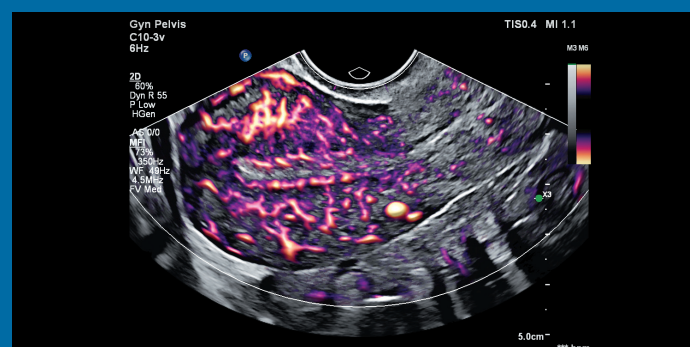
85% of Ob/Gyn users surveyed feel that MFI HD, with its ultrasensitive blood flow imaging, enhances their diagnostic confidence*

95% of Ob/Gyn users surveyed feel that FlexVue with Orthogonal View may improve their workflow*

85% of Ob/Gyn users surveyed feel that FlexVue with Orthogonal View may enhance their diagnostic confidence*

Remarkable dimensionality to color modes

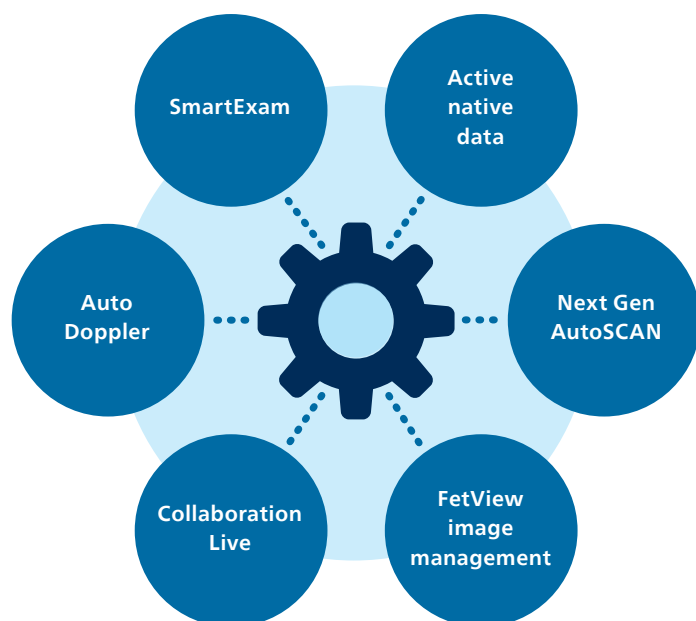
Flow Viewer provides a 3D-like rendering of flow imaging data to better visualize and enhance the aesthetic appeal of all color modes (Color, CPA/CPAd, MFI and MFI HD) for uterus and ovaries.



C10-3v uterus with MFI and Flow Viewer applied

Efficient from start to finish

- Tablet-like user interface results in **40% to 80% less reach** and **15% fewer steps**¹
- High Q Auto Doppler takes ten steps from a conventional exam to three steps, and **reduces button pushes by an average of 68%**²
- SmartExam protocols **decrease exam time up to 50%** and keystrokes by as many as 300 per exam³
- Improved satisfaction for AutoSCAN in **100% of cases**^{*4}



Ultrasound Collaboration Live with Multi-party*

Extend your team without expanding it

Offers remote access to help with diagnostic confidence, now with simultaneous multi-party communication. Up to six users can quickly and securely talk, text, screen share and video stream directly from the ultrasound system for access to multiple clinical resources at a distance, allowing for fast time to diagnosis, greater standardization and remote access regardless of location.**

Value you can count on

Streamline your workflow and securely connect with patients and colleagues

FetView is a convenient way to organize and digitize your women's health workflow so you can manage patient data and documentation for gynecology all in one place. Through this real-time access to clinical data, you gain a comprehensive picture of patient health to support timely decision making.

- Organize referrals and patient care with this secure cloud-based solution
- Import all images, videos and measurements from ultrasound devices from any vendor over a secure DICOM connection displayed in a clearly structured and customizable layout
- Communicate directly with your patients through the myFetView dedicated patient portal and share ultrasound examination reports online



Learn more at www.philips.com/obgyn
Contact your Philips account representative.

* EPIQ or Affiniti ultrasound systems on release 10.0.

** Contract required. Collaboration Live is intended for remote diagnostic use on release 9.0 or higher.



References

1. 2013 engineering study comparing EPIQ with Philips iU22 ultrasound system.
2. Auto Doppler Clinical Study, Dec. 2011.
3. University of Colorado, Protocols Study, Apr. 2007.
4. Philips NA, Marketing Claim Evidence for VM10.0 Flow Viewer and MFI-HD, March 2023.