

# PHILIPS

## 7000 Series Hair Dryer

ThermoShield Advanced

Water ion, mineral ion, 8 x ions

60%\*\*\*\*\* hair shine boost

4-minute fast drying



BHD713/10

**20% Faster\*. Lighter\*\*. Heat damage-free\*\*\*\*\*.**

**With ThermoShield Advanced Technology**

Enjoy fast professional results with the Philips 7000 Series Hair Dryer. ThermoShield Advanced Technology actively reads and controls the dryer's air temperature to protect your hair from heat damage\*\*\*\*\*.

### Easy to use

- Magnetic styling nozzle attaches effortlessly
- Volume diffuser with magnetic nozzle

### Ease of use

- Adjustable heat and fan speed for any hair and style
- Now 20% lighter for comfortable styling\*\*

### Care for your hair

- Water ions bring moisture to your hair
- Mineral ions protect against UV rays\*\*\*\*\*
- Ionic care system with 8 x more ions\*\*\*\*\*
- Intelligent Hot and Cold Mode for up to 60% shinier hair\*

### Fast drying experience

- Powerful airflow for 30% faster drying\*\*\*\*

### Sustainability

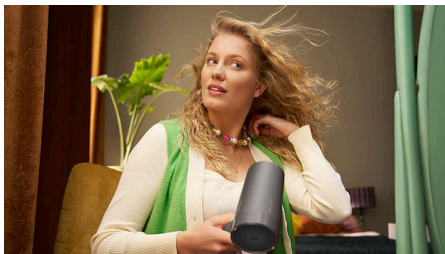
## Highlights

### ThermoShield Advanced\*\*\*\*\*



Dual-sensor system continuously reads the temperature in your room and actively adjusts the drying temperature 24,000 times per session to protect your hair from overheating. Enjoy a 25% more consistent drying temperature in any environment\*\*\*\*\*.

### Powerful airflow\*\*\*



Our innovative fan blades and specially designed heater work magic to dry your hair in just 4 minutes\*\*\*\*.

### Water ion



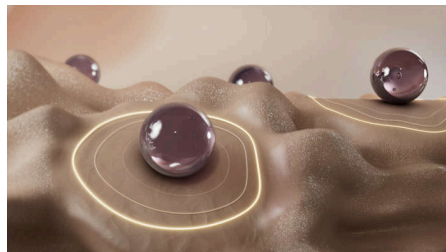
Add moisture for soft, healthy-looking hair. Water ion technology generates over 1000 times more water content than without an ioniser.

### Mineral ions\*\*\*\*



Keep your hair smooth and versatile. Mineral ion technology protects your hair against surface damage that can be caused by UV rays\*\*\*\*\*.

### Ionic care system\*\*\*\*\*



Ions intensify your hair's shine for frizz-free, glossy styling. Our powerful ionic system generates up to 80 million ions each drying session\*\*\*\*\*.

### Now 20% lighter\*\*



The ergonomic design of the hair dryer is now 20% lighter, so you can be stylish and comfortable at the same time\*\*.

### Intelligent Hot and Cold Mode\*



This intelligent feature provides a balance of hot and cold air that helps to boost hair's glossiness\*. The technology detects your environment's temperature to provide ideal drying comfort the whole year round.

### 8 heat and speed settings



Take control of your style with 4 heat settings and 2 fan speeds on the intuitive LED panel. Use the Cool Shot button for an intense burst to set your style, a must-have professional function for expert hair styling.

### 22% less energy used\*\*\*\*\*



The hair dryer uses 22% less energy while delivering professional drying and styling results\*\*\*\*\*.

## Highlights

### Better than a 2300 W dryer\*



The more efficient drying system improves airflow, air pressure and heat transfer so the dryer is lighter and more compact\*. This 1800 W hair dryer outperforms a Philips 2300 W hair dryer.

### Magnetic styling nozzle



Aim hot air right where you need it. The slim styling nozzle attaches magnetically, snapping perfectly into place for quick touch-ups and details.

### Magnetic volume diffuser



Style your curly hair effortlessly with our uniquely shaped diffuser. Enjoy stress-free use with our magnetic attachment nozzle that just makes sense.

Specifications

Attachments

- Nozzle: 11 m
- Magnetic diffuser
- Magnetic diffuser

Technical specifications

- Wattage: 1800 W
- Voltage: 220-240 V
- Motor: DC
- Cable length: 1.8 m
- Off mode power: < 0.3 W

Features

- Storage hook
- Heat/Speed settings: 8

Service

- 2 year worldwide warranty

Caring technologies

- Ion technology: 8 x ions, Water ion, Mineral ion



\* vs Philips S5000 2300W dryer  
\*\* vs Philips MoistureProtect HP8280  
\*\*\* based on average 4 mins of dry time  
\*\*\*\* based on medium (40 cm)-length Caucasian hair in a lab environment, at the highest speed and heat settings. Actual result might vary.  
\*\*\*\*\* Mineral ionic after 6 months of UV exposure  
\*\*\*\*\* vs HP8232/20 in the top setting  
\*\*\*\*\* Philips MoistureProtect HP8280 in the highest setting  
\*\*\*\*\* ThermoShield Advanced setting  
\*\*\*\*\* when using hot/cold mode vs naturally dried hair. Tested in a 3rd-party testing institute located in the USA.