

# PHILIPS

## Hair Dryer 3000 Series

2100 W

ThermoProtect attachment

6 heat and speed settings



BHD340/13

## Powerful drying at a lower temperature with the ThermoProtect attachment

The uniquely-designed ThermoProtect attachment powerfully mixes warm and cool air for everyday care.

### Easy to use

- Precise control with 6 heat and speed settings
- Slim nozzle for touch-ups and detailed styling

### Care and protect

- ThermoProtect attachment

### Powerful drying

- Powerful drying with 2100 W
- Cool air setting to finish your style

## 3000 Series

Hair Dryer

BHD340/13

# Highlights

### 2100 W of drying power



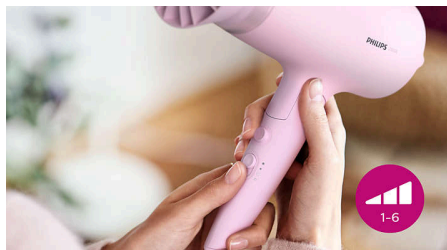
This 2100 W hair dryer creates powerful airflow for beautiful results every day.

### ThermoProtect attachment



The uniquely-designed ThermoProtect attachment powerfully mixes warm and cool air for everyday care. It drops the temperature by 15°C while still drying your hair quickly.

### 6 heat and speed settings



Easily pick the combination of heat and speed that works best for your hair and style. Six different settings ensure precise control for tailored styling.

### Cool air setting



The cool air setting provides a burst of cold air to finish and hold your style.

### 14 mm styling nozzle



The slim nozzle precisely focuses the air for quick touch-ups and perfecting small details of your style.

# Specifications

### Attachments

Nozzle: 14 mm

ThermoProtect attachment

### Technical specifications

Cord length: 1.8 m

Voltage: 220-240 V

Wattage: 2100 W

Motor: DC

### Features

Storage hook

Heat/Speed settings: 6

Settings: Cool air setting

### Service

2 year worldwide warranty

### Caring technologies

ThermoProtect

