

# PHILIPS



## Pro Hairdryer

### DryCare

Powerful AC motor

2100 W drying power

High air speed up to 130 km/h  
(99 mph)\*

Ionic care for shiny hair



BHD272/00

## Fast and powerful drying for professional results

Philips Pro hairdryer has a professional AC motor that reaches up to 130 km/h\* of air speed for fast and professional results. It also features the ThermoProtect setting for optimal temperature to protect from overheating.

### Less hair damage

- ThermoProtect temperature setting
- Ionic care for smooth, frizz-free, shiny hair

### Professional salon-style results

- Six speed and heat settings for optimal control
- Cool Shot sets your style
- 9 mm concentrator for focused airflow, great for styling

### Fast drying experience

- 2100 W of fast, high-performance drying power
- Fast drying, powerful AC motor

# Highlights

## Powerful AC motor



Philips Pro hairdryer has a high performance AC motor developed for the professional market. It generates up to 130 km/h\* of air speed for fast and effective results.

## 2100 W of power



This 2100 W Pro hairdryer creates a powerful airflow. The resulting combination of power and speed makes your drying and styling experience quicker and easier.

## ThermoProtect temperature



The ThermoProtect temperature setting provides the optimal drying temperature and gives additional protection from overheating the hair. With the same powerful airflow, you will get the best results while caring for your hair.

## Ionic care



Charged negative ions eliminate static, condition the hair and smooth down the hair cuticles to intensify the hair's shine and glossiness. The result is hair that is smooth, shiny and frizz-free.

## Cool Shot



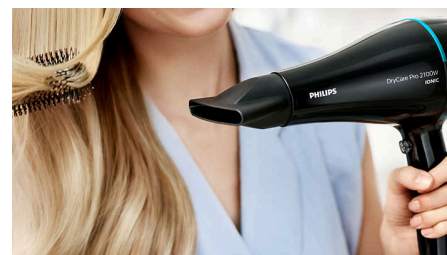
A must-have professional function, the Cool Shot button provides an intense burst of cold air. It is used after styling to finish and set the style.

## Accurate control



The speed and heat required can be easily adjusted to create the perfect style. Six different settings ensure optimal control for precise and tailored styling.

## 9 mm narrow concentrator



The 9 mm opening of the concentrator focuses the flow of air for precision styling on specific areas. The ideal attachment for brushing while drying and styling.

# Specifications

## Attachments

Nozzle: 9 mm

## Weight and dimensions

Product weight (excl. pack): 0.728 kg

F-Box weight: 0.975 kg

## Technical specifications

Cord length: 1.8 m

Power: 2100 W

Voltage: 220 V

Wattage: 2100 W

Frequency: 50–60 Hz

Motor: AC

Colour/Finish: Black and Lagoon green

Drying speed: up to 130 km/h\*

Off mode power: < 0.3 W

## Features

Foldable handle: No

Cool shot

Storage hook

Heat/Speed settings: 6

## Service

2 year guarantee

## Caring technologies

Ionic Care

ThermoProtect setting

