

PHILIPS



Hair Dryer

5000 Series

2300 W

ThermoShield technology

8 x ionic care*

3 heat and 2 speed settings



BHD510/20

Fast drying, with no heat damage** with ThermoShield technology

ThermoShield technology gives you ultimate protection from heat damage, by actively controlling the air temperature of the dryer to an optimum level.

Beautifully styled hair

- Precise control with 6 heat and speed settings
- Ultra-slim nozzle for salon-like styling
- Cool Shot to set your style
- Slim nozzle for touch-ups and detailed styling
- Adds volume and maximises thickness, curls and bouncy styles

Care and protect

- A powerful motor creates air speeds of up to 110 km/h****
- 8 x ionic care* for shiny, frizz-free hair

Powerful drying

- 20%*** faster drying, with a powerful 2300 W airflow

ThermoShield technology

- ThermoShield technology, for ultimate heat protection

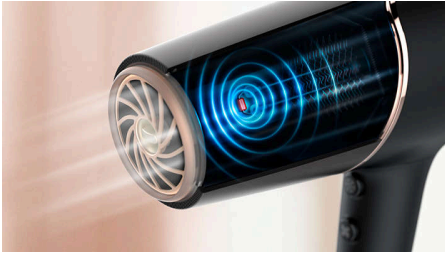
5000 Series

Hair Dryer

BHD510/20

Highlights

ThermoShield technology



The overheat detect sensor actively optimises and controls the air temperature, protecting your hair from damage** caused by overheating. Enjoy a stress-free drying experience with ThermoShield technology.

6 heat and speed settings



Easily pick the combination of heat and speed that works best for your hair and style. Six different settings ensure precise control for tailored styling.

9 mm styling nozzle



Powerful airflow is focused through the ultra-slim opening, guiding the air to create more precise and salon-like styling.

Cool Shot



The Cool Shot button provides an intense burst of cool air. It is used after styling to finish and set the style.

11 mm styling nozzle



The 11 mm opening of the styling nozzle focuses the flow of air for precision styling in specific areas. The ideal attachment for brushing while drying and styling.

20%*** faster drying



A more powerful airflow of 2300 W makes drying 20%*** faster while still protecting your hair.

Volume diffuser



The volume diffuser spreads the flow of air across the hair, boosting volume and reducing frizz while drying. For best results, hold the diffuser close to the crown and root area. The diffuser's fine textured pins will add volume, maximise thickness and bounce and help to shape curls.

110 km/h air speed****



This hair dryer's high-performance motor has been developed for the professional market. It generates an air speed of up to 110 km/h****, for fast drying and impressive styling.

8 x ionic care*



This ultra-powerful ionic system emits up to 80 million ions per drying session, creating frizz-free, shiny hair.

5000 Series

Hair Dryer

BHD510/20

Specifications

Attachments

Nozzle: 9 mm and 11 mm

Volume diffuser

Technical specifications

Cord length: 1.8 m

Voltage: 220-240 V

Wattage: 2300 W

Motor: DC

Colour/Finish: Blue and Metallic

Off mode power: < 0.3 W

Features

Storage hook

Heat/Speed settings: 6

Cool Shot

Cool shot

Service

2 year worldwide warranty

Caring technologies

ThermoShield technology

8 x Ion technology: *

