

# PHILIPS

## 7000 Series

## Hair Dryer

ThermoShield Advanced

Water ion, mineral ion, 8 x ions

60%\*\*\*\*\* hair shine boost

4-minute fast drying



BHD723/10



20% Faster\*. Lighter\*\*. Heat damage-free\*\*\*\*\*.

With ThermoShield Advanced Technology

Enjoy fast professional results with the Philips 7000 Series Hair Dryer. ThermoShield Advanced Technology actively reads and controls the dryer's air temperature to protect your hair from heat damage\*\*\*\*\*.

#### Easy to use

- Magnetic styling nozzle attaches effortlessly
- Volume diffuser with magnetic nozzle

#### Ease of use

- Adjustable heat and fan speed for any hair and style
- Now 20% lighter for comfortable styling\*\*

#### Care for your hair

- Water ions bring moisture to your hair
- Mineral ions protect against UV rays\*\*\*\*\*
- Ionic care system with 8 x more ions\*\*\*\*\*
- Intelligent Hot and Cold Mode for up to 60% shinier hair\*

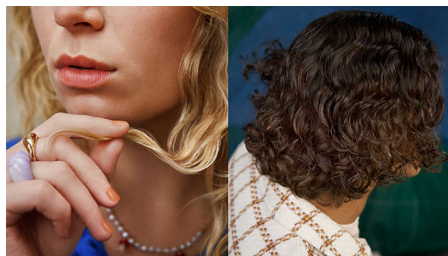
#### Fast drying experience

- Powerful airflow for 30% faster drying\*\*\*\*

#### Sustainability

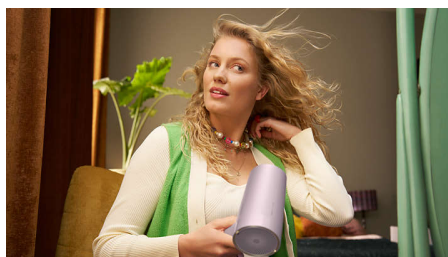
# Highlights

## ThermoShield Advanced\*\*\*\*\*



Dual-sensor system continuously reads the temperature in your room and actively adjusts the drying temperature 24,000 times per session to protect your hair from overheating. Enjoy a 25% more consistent drying temperature in any environment\*\*\*\*\*.

## Powerful airflow\*\*\*\*



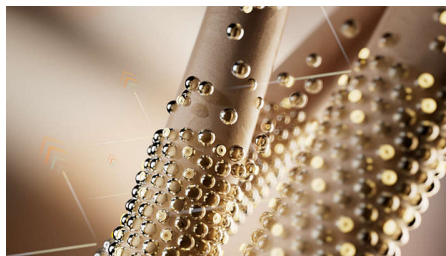
Our innovative fan blades and specially designed heater work magic to dry your hair in just 4 minutes\*\*\*\*.

## Water ion



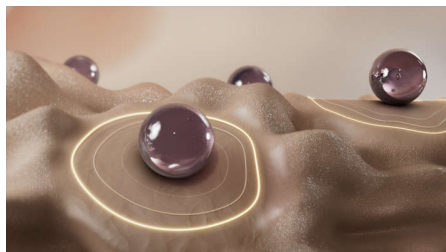
Add moisture for soft, healthy-looking hair. Water ion technology generates over 1000 times more water content than without an ioniser.

## Mineral ions\*\*\*\*



Keep your hair smooth and versatile. Mineral ion technology protects your hair against surface damage that can be caused by UV rays\*\*\*\*.

## Ionic care system\*\*\*\*\*



Ions intensify your hair's shine for frizz-free, glossy styling. Our powerful ionic system generates up to 80 million ions each drying session\*\*\*\*\*.

## Now 20% lighter\*\*



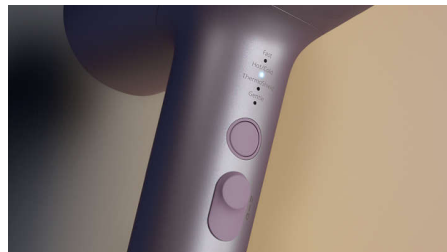
The ergonomic design of the hair dryer is now 20% lighter, so you can be stylish and comfortable at the same time\*\*.

## Intelligent Hot and Cold Mode\*



This intelligent feature provides a balance of hot and cold air that helps to boost hair's glossiness\*. The technology detects your environment's temperature to provide ideal drying comfort the whole year round.

## 8 heat and speed settings



Take control of your style with 4 heat settings and 2 fan speeds on the intuitive LED panel. Use the Cool Shot button for an intense burst to set your style, a must-have professional function for expert hair styling.

## 22% less energy used\*\*\*\*\*



The hair dryer uses 22% less energy while delivering professional drying and styling results\*\*\*\*\*.

# Specifications

**Attachments**

Nozzle: 11 m  
Magnetic diffuser

**Technical specifications**

Wattage: 1800 W  
Voltage: 220-240 V  
Motor: DC  
Cable length: 1.8 m

**Features**

Storage hook  
Heat/Speed settings: 8

**Service**

2 year worldwide warranty

**Caring technologies**

Ion technology: 8 x ions, Water ion, Mineral ion



\* vs Philips S5000 2300W dryer  
\* \* vs Philips MoistureProtect HP8280  
\* \* \* based on average 4 mins of dry time  
\* \* \* \* based on medium (40 cm)-length Caucasian hair in a lab environment, at the highest speed and heat settings. Actual result might vary.  
\* \* \* \* \* Mineral ionic after 6 months of UV exposure  
\* \* \* \* \* vs HP8232/20 in the top setting  
\* \* \* \* \* Philips MoistureProtect HP8280 in the highest setting  
\* \* \* \* \* ThermoShield Advanced setting  
\* \* \* \* \* when using hot/cold mode vs naturally dried hair. Tested in a 3rd-party testing institute located in the USA.