

PHILIPS

Hair Dryer

5000 Series

2300 W

ThermoShield technology

8 x ionic

3 heat and 2 speed settings

BHD512/20



Fast drying with no heat damage*

with ThermoShield technology

ThermoShield technology gives you ultimate protection from heat damage, by actively controlling the air temperature of the dryer to an optimum level.

Beautifully styled hair

- Precise control with 6 heat and speed settings
- Ultra-slim nozzle for salon-like styling
- Slim nozzle for touch-ups and detailed styling
- Adds volume and maximises thickness, curls and bouncy styles
- Cool shot to set your style

Care and protect

- 8 x ionic care*** for shiny, frizz-free hair
- A powerful motor creates air speeds of up to 110 km/h****

Powerful drying

- 20%** faster drying with a powerful airflow of 2300 W

ThermoShield technology

- ThermoShield technology, for ultimate heat protection

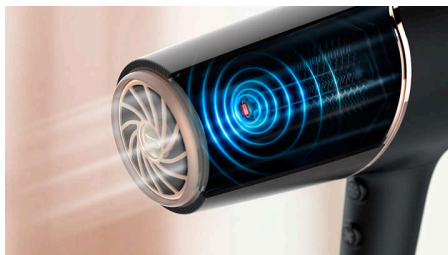
5000 Series

Hair Dryer

BHD512/20

Highlights

ThermoShield technology



The overheat-detecting sensor actively controls the air temperature of the dryer to an optimal level, giving ultimate protection from heat damage. Make your drying experience stress-free with ThermoShield technology.

20%** faster drying



A more powerful airflow of 2300 W makes drying 20%** faster while still protecting your hair.

110 km/h air speed****



This hair dryer's high-performance motor has been developed for the professional market. It generates an air speed of up to 110 km/h****, for fast drying and impressive styling.

8 x ionic care***



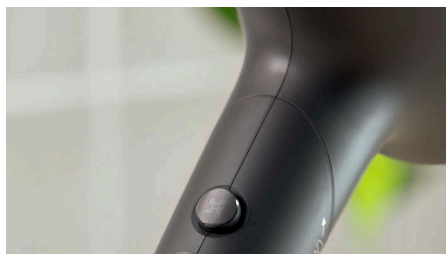
This ultra-powerful ionic system emits up to 80 million ions per drying session, resulting in frizz-free, shiny hair.

6 heat and speed settings



Easily pick the combination of heat and speed that works best for your hair and style. Six different settings ensure precise control for tailored styling.

Cool shot



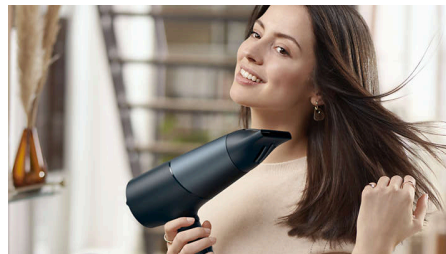
The Cool shot provides a burst of cold air — a must-have setting to set and finish your style.

11 mm styling nozzle



The 11 mm opening of the styling nozzle focuses the flow of air for precision styling in specific areas. The ideal attachment for brushing while drying and styling.

9 mm styling nozzle



Powerful airflow is focused through the ultra-slim opening, guiding the air to create more precise and salon-like styling.

Volume diffuser



The volume diffuser spreads the flow of air across the hair, boosting volume and reducing frizz while drying. For best results, hold the diffuser close to the crown and root area. The diffuser's fine textured pins will add volume, maximise thickness and bounce and help to shape curls.

5000 Series

Hair Dryer

BHD512/20

Specifications

Attachments

Nozzle: 11 mm

Technical specifications

Voltage: 220-240 V

Wattage: 2300 W

Motor: DC

Cable length: 1.8 m

Colour/Finish: Teal and Metallic

Off mode power: < 0.3 W

Features

Storage hook

Heat/Speed settings: 6

Cool Shot

Cool shot

Service

2 year worldwide warranty

Caring technologies

ThermoShield technology

8 x Ion technology

© 2025 Koninklijke Philips N.V.
All Rights reserved.

Issue date 2025-04-06
Version: 8.8.1

Specifications are subject to change without notice. Trademarks are the property of Koninklijke Philips N.V. or their respective owners.

www.philips.com



* same as air-dried hair
** vs basic dryer in top setting
*** vs. BHD350
**** Tested in a Philips lab with the nozzle in the top setting