

PHILIPS



Hair Dryer

5000 Series

2100 W

ThermoShield technology

4 x ionic care*

3 heat and 2 speed settings



BHD501/20

Fast drying, with no heat damage** with ThermoShield technology

ThermoShield technology gives you ultimate protection from heat damage, by actively controlling the air temperature of the dryer to an optimum level.

Beautifully styled hair

- Precise control with 6 heat and speed settings
- Cool Shot to set your style
- Adds volume and maximises thickness, curls and bouncy styles
- Slim nozzle for touch-ups and detailed styling

Care and protect

- 4 x ionic care* for shiny, frizz-free hair

Powerful drying

- Fast drying, for professional results with 2100 W

ThermoShield technology

- ThermoShield technology, for ultimate heat protection

5000 Series

Hair Dryer

BHD501/20

Highlights

ThermoShield technology



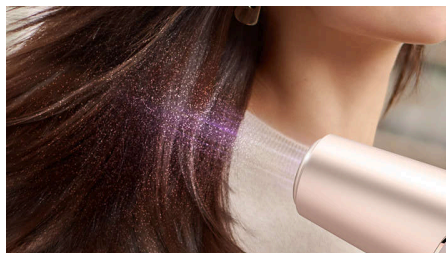
The overheat detect sensor actively optimises and controls the air temperature, protecting your hair from damage** caused by overheating. Enjoy a stress-free drying experience with ThermoShield technology.

2100 W of power



This 2100 W professional hair dryer creates a powerful airflow. The resulting combination of power and speed makes the drying and styling experience quicker and easier.

4 x ionic care*



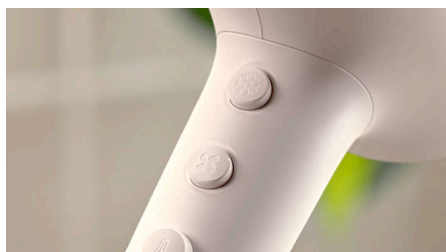
This powerful ionic system generates up to 40 million ions per drying session, intensifying your hair's shine, so you can enjoy glossy, frizz-free hair.

6 heat and speed settings



Easily pick the combination of heat and speed that works best for your hair and style. Six different settings ensure precise control for tailored styling.

Cool Shot



The Cool Shot button provides an intense burst of cool air. It is used after styling to finish and set the style.

14 mm styling nozzle



The slim nozzle precisely focuses the air for quick touch-ups and perfecting small details of your style.

Volume diffuser



The volume diffuser spreads the flow of air across the hair, boosting volume and reducing frizz while drying. For best results, hold the diffuser close to the crown and root area. The diffuser's fine textured pins will add volume, maximise thickness and bounce and help to shape curls.

5000 Series

Hair Dryer

BHD501/20

Specifications

Attachments

Nozzle: 14 mm

Accessories

Attachments: Volume diffuser

Technical specifications

Cord length: 1.8 m

Voltage: 220-240 V

Wattage: 2100 W

Motor: DC

Colour/Finish: White and Metallic

Off mode power: < 0.3 W

Features

Storage hook

Heat/Speed settings: 6

Cool Shot

Cool shot

Service

2 year worldwide warranty

Caring technologies

Ionic technology: 2 x ions*

ThermoShield technology

