

# PHILIPS

WQHD gaming  
monitor

Curved Fast VA  
Gaming monitor

Evnia 3000

34" (86.36 cm)

3440 x 1440 (WQHD)

34M2C3500L



## Broaden your gaming horizon

This Fast VA monitor allows you to game with ultimate precision and speed at 180 Hz. With sharp HDR quality imagery, curved frame and WQHD resolution guaranteed, this monitor produces an excellent all-round gaming experience.

### Features designed for gamers' needs

- SmartImage game mode optimised for gamers
- LowBlue mode and Flicker-free easy-on-the eyes viewing
- EasySelect menu toggle key for quick on-screen menu access
- Smart Crosshair: for better aim and more fun

### Built for fast action

- 180 Hz refresh rates for ultra-smooth, brilliant images
- Fast VA Panel: For sharp imagery at high frame rates
- 0.5 ms ultra-fast speed for crisp images and smooth gameplay
- Low input lag reduces time delay between devices to monitor

### Immersive visuals

- High Dynamic Range (HDR) for more lifelike colourful visuals
- SmartContrast for rich black details
- Curved display design for a more immersive experience
- CrystalClear images with UltraWide QHD 3440 x 1440 pixels

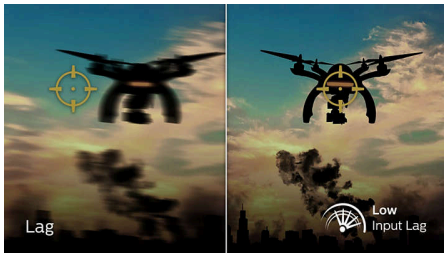
## Highlights

### 180 Hz Gaming



You play intense, competitive gaming. You demand display with lag-free, ultra-smooth images. This display redraws the screen image up to 180 times per second, effectively faster than a standard display. A lower frame rate can make enemies appear to jump from spot to spot on the screen, making them difficult targets to hit. With a 180 Hz frame rate, you get those critical missing images on the screen which show enemy movement in ultra-smooth motion so you can easily target enemies. With ultra-low input lag and no screen tearing, this Philips display is your perfect gaming partner.

### Low input lag



Input lag is the amount of time that elapses between performing an action with connected devices and seeing the result on screen. Low input lag reduces the time delay between entering a command from your devices to monitor, greatly improving play on twitch-sensitive video games, particularly important for playing fast-paced, competitive games.

### 0.5 ms Smart MBR fast response



The Philips Evnia with 0.5 ms Smart MBR effectively eliminates smearing and motion blur, and delivers sharper and more precise visuals to enhance your gaming experience. Fast-moving action and dramatic transitions will be rendered smoothly. It's the best choice for playing thrilling and twitch-sensitive games.

### Fast VA



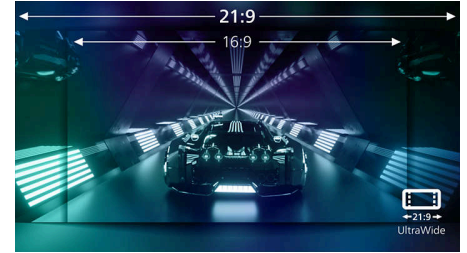
This feature is made for action-packed gameplay. Not only does it produce virtually blur-free gaming, but it also pairs well with high frame rates for the best and sharpest imagery, guaranteed.

### Curved display design



Desktop monitors offer a personal user experience, which suits a curved design very well. The curved screen provides a pleasant yet subtle immersion effect, which focuses on you at the centre of your desk.

### UltraWide CrystalClear images



These Philips screens deliver Crystal Clear, UltraWide Quad HD 3440 x 1440 pixel images. Utilising high-performance panels with high-density pixel count and 178/178 wide viewing angles, these new displays will make your images and graphics come alive. The UltraWide 21:9 format enables more productivity with more room for side-by-side comparisons and more viewable spreadsheet columns. Whether you are a demanding professional requiring extremely detailed information for CAD-CAM solutions or a financial wizard working on huge spreadsheets, Philips displays deliver Crystal Clear images.

### High Dynamic Range (HDR)



High Dynamic Range delivers a dramatically different visual experience. With astonishing brightness, incomparable contrast and captivating colour, images come to life with much greater brightness while also featuring much deeper, more nuanced darks. It renders a fuller palette of rich new colours never before seen on a display, giving you a visual experience that engages your senses and inspires emotions.



# Curved Fast VA Gaming monitor

WQHD gaming monitor

34M2C3500L/01

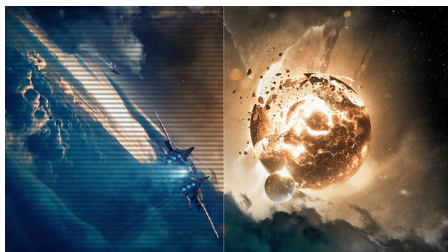
## Highlights

### SmartContrast



SmartContrast is a Philips technology that analyses the contents you are displaying, automatically adjusting colours and controlling backlight intensity to dynamically enhance contrast for the best digital images and videos or when playing games where dark hues are displayed. When Economy mode is selected, contrast is adjusted and backlighting fine-tuned for just-right display of everyday office applications and lower power consumption.

### LowBlue mode and Flicker-free



Our LowBlue Mode and Flicker-free technology have been developed to reduce eye strain and fatigue often caused by long hours in front of a monitor.

### EasySelect Menu Toggle Key



The discreetly placed EasySelect Menu Toggle Key allows you to make quick and easy adjustments to monitor settings in the On-Screen Display menu.

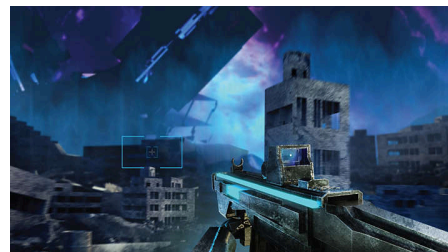
### SmartImage Game mode



The new Philips gaming display has quick-access OSD fine-tuned for gamers, offering you multiple options. "FPS" mode (First person shooting) improves dark themes in games, allowing you to see hidden objects in dark areas. "Racing" mode adapts the display with the fastest response time and high colour, along with image adjustments. "RTS" mode (Real-time strategy) has a special SmartFrame mode that enables highlighting of specific area and allows for size and image

adjustments. Gamer 1 and Gamer 2 enable you to save personal customised settings based on different games, ensuring best performance.

### Smart Crosshair



Colour of Crosshair is set by default. When Smart Crosshair is on, the colour will change as a complementary colour to the background colour. Smart Crosshair enhances the aiming accuracy so you can spot the enemies more easily.



# Specifications

## Picture/Display

**Panel Size:** 34 inch/86.36 cm  
**Aspect ratio:** 21:9  
**LCD panel type:** VA 1500R (curvature)  
**Backlight type:** W-LED  
**Pixel pitch:** 0.23175 x 0.23175 mm  
**Brightness:** 300 cd/m<sup>2</sup>  
**Display colours:** Colour support: 1.07 billion colours (10 bits)\*  
**Colour gamut (typical):** Adobe RGB 90%; DCI-P3:94%, sRGB: 125%, NTSC 105%\*  
**Contrast ratio (typical):** 4000:1  
**SmartContrast:** Mega Infinity DCR  
**Response time (typical):** 1 ms (Grey to Grey)\*  
**Viewing angle:** 178° (H)/178° (V), @ C/R > 10000  
**Picture enhancement:** SmartImage game  
**Maximum resolution:** 3440 x 1440 @ 180 Hz (DP), 8 bits; 3440 x 1440 @ 100 Hz (HDMI), 8 bits  
**Effective viewing area:** 797.22 (H) x 333.72 (V) mm — at a 1500 R curvature\*  
**Scanning Frequency:** 30–255 kHz(H)/48–180 Hz(V)  
**sRGB**  
**Delta E:** <2 (sRGB)  
**Flicker-free**  
**Pixel Density:** 109.68 PPI  
**LowBlue Mode**  
**Display Screen Coating:** Anti-glare, 25%, 3H  
**SmartUniformity:** 93–105%  
**Low Input Lag**  
**EasyRead**  
**Adaptive sync**  
**HDR:** Supported HDR 10  
**Backlight type:** W-LED  
**Smart MBR:** 0.5 ms\*  
**Smart Crosshair**  
**Shadow Boost**

## Connectivity

**Signal Input:** HDMI 2.0 x 2, DisplayPort 1.4 x 1  
**Sync Input:** Separate Sync  
**Audio (In/Out):** Audio out  
**HDCP:** HDCP 1.4 (HDMI/DisplayPort), HDCP 2.2 (HDMI/DisplayPort)

## Convenience

**Plug and Play Compatibility:** DDC/CI, Mac OS X, sRGB, Windows 11/10  
**User convenience:** Power On/Off, Menu/OK, Input/Up, Game Settings/Down, SmartImage game/Back

**OSD Languages:** Brazil Portuguese, Czech, Dutch, English, Finnish, French, German, Greek, Hungarian, Italian, Japanese, Korean, Polish, Portuguese, Russian, Spanish, Simplified Chinese, Swedish, Turkish, Traditional Chinese, Ukrainian  
**Other convenience:** Kensington lock, VESA mount (100 x 100 mm), LowBlue Mode  
**MultiView:** PIP/PBP mode, 2 x Devices

## Stand

**Tilt:** -5/20 degree

## Power

**Power supply:** Internal, 100–240 VAC, 50–60 Hz  
**Off mode:** 0.3 W (typ.)  
**On mode:** 31.0 W (typ.)  
**Standby mode:** 0.5 W (typ.)  
**Power LED indicator:** Operation - White, Standby mode - White (flashing)

## Dimensions

**Packaging in mm (W x H x D):**  
 930 x 480 x 188 mm  
**Product without stand (mm):** 808 x 369 x 69 mm  
**Product with stand (max height):**  
 808 x 464 x 251 mm

## Weight

**Product with packaging (kg):** 9.47 kg  
**Product with stand (kg):** 7.33 kg  
**Product without stand (kg):** 6.50 kg

## Operating conditions

**Altitude:** Operation: +12,000 ft (3658 m), Non-operation: +40,000 ft (12,192 m)  
**Temperature range (operation):** 0°C to 40 °C  
**MTBF:** 50,000 hour(s)  
**Relative humidity:** 20%-80 %  
**Temperature range (storage):** -20°C to 60 °C

## Sustainability

**Environmental and energy:** RoHS  
**Post-consumer recycled plastics:** 85%\*

## Compliance and standards

**Regulatory Approvals:** CB, CE Mark, TUV/ISO9241-307, TUV-BAUART, EAC, EAEU RoHS, UKCA, EMF, FCC, ICES-003, cETLus

## Cabinet

**Colour:** Charcoal  
**Finish:** Textured

## What's in the box?

**Cables:** HDMI cable, Display Port cable, Power cable  
**Monitor with stand**  
**User Documentation**



\* Radius of the arc of the display curvature in mm  
 \* Display colours: 10 bits can be reached by DP @ 165 Hz  
 \* Response time value equal to SmartResponse.  
 \* Adobe RGB and DCI-P3 Coverage based on CIE1976, sRGB Area based on CIE1931, NTSC Area based on CIE1976.  
 \* This monitor strives for sustainability: the stand's feet are made with 35% recycled plastic and the monitor's chassis is made up of 85% post-consumer recycled plastic.  
 \* Smart MBR adjusts brightness for blur reduction, so you cannot adjust brightness while Smart MBR is turned on. To reduce motion blur, the LED backlight will strobe synchronously with each screen refresh, which may cause a noticeable change in brightness.  
 \* Smart MBR is a gaming-optimised mode. Turning on Smart MBR may cause noticeable screen flickering. We recommended turning it off when you are not using the gaming function.  
 \* The products and accessories listed on this leaflet may differ by country and region.  
 \* The monitor may look different from feature images.