

PHILIPS

EVNIA



Full HD gaming
monitor

Fast IPS Gaming monitor

Evnia 3000

27" (68.5 cm)

1920 x 1080 (Full HD)



27M2N3200AM

Broaden your gaming horizon

This monitor can play up to a speed of 180 Hz for any game. It also has a plethora of other features that make it the ideal gaming companion, such as Full HD resolution, HDR-quality imagery and Smart Crosshair.

Features designed for you

- Smart Crosshair: for better aim and more fun
- SmartImage game mode optimised for gamers
- EasySelect menu toggle key for quick on-screen menu access
- Built-in stereo speakers for multimedia
- LowBlue mode and Flicker-free easy-on-the eyes viewing
- SmartErgoBase enables user-friendly ergonomic adjustments

Built for fast action

- 180 Hz refresh rates for ultra-smooth, brilliant images
- Effortlessly smooth gameplay with AMD FreeSync™ technology
- 0.5 ms ultra-fast speed for crisp images and smooth gameplay
- Fast IPS Panel: For rapid and crystal-clear gaming
- Low input lag reduces time delay between devices to monitor

Immersive visuals

- 16:9 Full HD display for crisp, detailed images

Fast IPS Gaming monitor

Full HD gaming monitor

27M2N3200AM/00

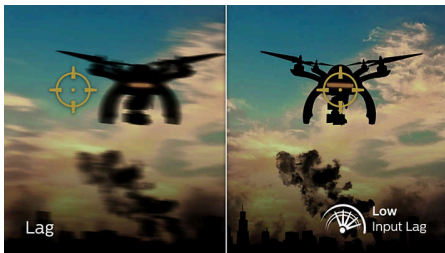
Highlights

180 Hz Gaming



You play intense, competitive gaming. You demand display with lag-free, ultra-smooth images. This display redraws the screen image up to 180 times per second, effectively faster than a standard display. A lower frame rate can make enemies appear to jump from spot to spot on the screen, making them difficult targets to hit. With a 180 Hz frame rate, you get those critical missing images on the screen which show enemy movement in ultra-smooth motion so you can easily target enemies. With ultra-low input lag and no screen tearing, this Philips display is your perfect gaming partner.

Low input lag



Input lag is the amount of time that elapses between performing an action with connected devices and seeing the result on screen. Low input lag reduces the time delay between entering a command from your devices to monitor, greatly improving play on twitch-sensitive video games, particularly important for playing fast-paced, competitive games.

0.5 ms Smart MBR fast response



The Philips Evnia with 0.5 ms Smart MBR effectively eliminates smearing and motion blur, and delivers sharper and more precise visuals to enhance your gaming experience. Fast-moving action and dramatic transitions will be rendered smoothly. It's the best choice for playing thrilling and twitch-sensitive games.

Fast IPS



This feature is made for action-packed gameplay. Not only does it produce virtually blur-free gaming, but it also pairs well with high frame rates for the best and sharpest imagery, guaranteed.

16:9 Full HD display



Picture quality matters. Regular displays deliver quality, but you expect more. This display features enhanced Full HD 1920 x 1080

resolution. With Full HD for crisp detail paired with high brightness, incredible contrast and realistic colours, expect a true-to-life picture.

High Dynamic Range (HDR)



High Dynamic Range delivers a dramatically different visual experience. With astonishing brightness, incomparable contrast and captivating colour, images come to life with much greater brightness while also featuring much deeper, more nuanced darks. It renders a fuller palette of rich new colours never before seen on a display, giving you a visual experience that engages your senses and inspires emotions.

SmartContrast



SmartContrast is a Philips technology that analyses the contents you are displaying, automatically adjusting colours and controlling backlight intensity to dynamically enhance contrast for the best digital images and videos or when playing games where dark hues are displayed. When Economy mode is selected, contrast is adjusted and backlighting fine-tuned for just-right display of everyday office applications and lower power consumption.



Fast IPS Gaming monitor

Full HD gaming monitor

27M2N3200AM/00

Highlights

LowBlue Mode and Flicker-free



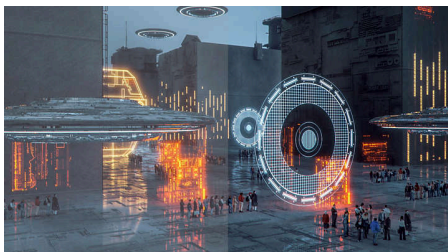
Our LowBlue Mode and Flicker-free technology have been developed to reduce eye strain and fatigue often caused by long hours in front of a monitor.

EasySelect Menu Toggle Key



The discreetly placed EasySelect Menu Toggle Key allows you to make quick and easy adjustments to monitor settings in the On-Screen Display menu.

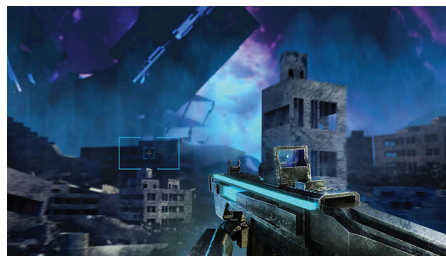
SmartImage Game mode



The new Philips gaming display has quick-access OSD fine-tuned for gamers, offering you multiple options. "FPS" mode (First person shooting)

improves dark themes in games, allowing you to see hidden objects in dark areas. "Racing" mode adapts the display with the fastest response time and high colour, along with image adjustments. "RTS" mode (Real-time strategy) has a special SmartFrame mode that enables highlighting of specific area and allows for size and image adjustments. Gamer 1 and Gamer 2 enable you to save personal customised settings based on different games, ensuring best performance.

Smart Crosshair



Colour of Crosshair is set by default. When Smart Crosshair is on, the colour will change to a colour that is complementary to the background colour. Smart Crosshair enhances the accuracy of aiming so you can spot the enemies much more easily.

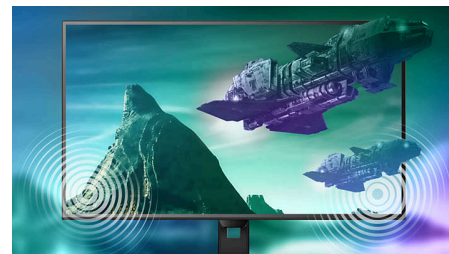
SmartErgoBase



The SmartErgoBase is a monitor base that delivers ergonomic display comfort and provides cable management. The base can swivel, tilt and rotate to various angles to ensure maximum comfort. The height-adjustable stand guarantees the optimal viewing level, reducing the physical

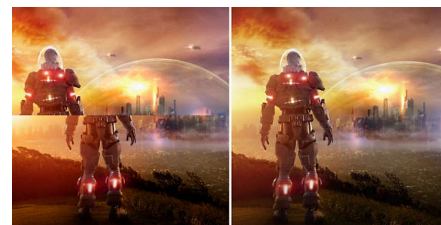
strains of a long workday, while cable management reduces cable clutter and keeps the workspace neat and professional.

Built-in stereo speakers



A pair of high-quality stereo speakers built into a display device. They may be visible front firing, or invisible down firing, top firing, rear firing etc. depending on model and design.

Ultra-smooth gaming



AMD FreeSync™ OFF (simulation)

AMD FreeSync™ ON

Gaming shouldn't be a choice between choppy gameplay or broken frames. With the new Philips monitor it doesn't have to be. Get fluid, artefact-free performance at virtually any frame rate with AMD FreeSync™ technology, smooth, quick refresh and ultra-fast response time.



Fast IPS Gaming monitor

Full HD gaming monitor

27M2N3200AM/00

Specifications

Picture/Display

Panel Size: 27 inch/68.6 cm
Aspect ratio: 16:9
LCD panel type: Fast IPS
Backlight type: W-LED system
Pixel pitch: 0.31125 x 0.31125 mm
Brightness: 300 cd/m²
Display colours: 16.7 M
Colour gamut (typical): DCI-P3: 95%*, sRGB: 128%* Adobe RGB: 90%*
Contrast ratio (typical): 1000:1
SmartContrast: Mega Infinity DCR
Response time (typical): 1 ms (Grey to Grey)*
Viewing angle: 178° (H)/178° (V), @ C/R > 10
Picture enhancement: SmartImage game
Maximum resolution: 1920 x 1080 @ 180 Hz (HDMI/DP)
Effective viewing area: 597.888 (H) x 336.312 (V)
Scanning Frequency: 30k - 200 kHz (H)/48 - 180 Hz (V)
sRGB
Flicker-free
Pixel Density: 81.59 PPI
LowBlue Mode
Display Screen Coating: Anti-Glare, 3H, Haze 25%
EasyRead
AMD FreeSync™ technology
HDR: HDR 10 supported
Smart Crosshair
Shadow Boost
Smart MBR: 0.5 ms*

Connectivity

Signal Input: HDMI 2.0 x 2, DisplayPort 1.4 x 1
Sync Input: Separate Sync
Audio (In/Out): Headphone out
HDCP: HDCP 1.4 (HDMI/DP), HDCP 2.2 (HDMI/DP)

Convenience

Built-in Speakers: 2 W x 2
Plug and Play Compatibility: DDC/CI, Mac OS X, sRGB, Windows 11/10
User convenience: Power On/Off, Menu/OK, Input/Up, Game Settings/Down, SmartImage game/Back
OSD Languages: Brazil Portuguese, Czech, Dutch, English, Finnish, French, German, Greek, Hungarian, Italian, Japanese, Korean, Polish, Portuguese, Russian, Spanish, Simplified Chinese,

Swedish, Turkish, Traditional Chinese, Ukrainian
Other convenience: Kensington lock, VESA mount (100 x 100 mm)

Stand

Height adjustment: 130 mm
Pivot: -/+ 90 degree
Swivel: -/+ 30 degree
Tilt: -5/20 degree

Power

Power supply: Internal, 100–240 VAC, 50–60 Hz
Off mode: 0.3 W (typ.)
On mode: 27.4 W (typ.)
Standby mode: 0.5 W (typ.)
Power LED indicator: Operation - White, Standby mode - White (flashing)
Energy Label Class: E

Dimensions

Packaging in mm (W x H x D):
730 x 478 x 188 mm
Product without stand (mm): 614 x 368 x 60 mm
Product with stand (max height):
614 x 519 x 261 mm

Weight

Product with packaging (kg): 9.46 kg
Product with stand (kg): 5.82 kg
Product without stand (kg): 4.00 kg

Operating conditions

Altitude: Operation: +12,000 ft (3658 m), Non-operation: +40,000 ft (12,192 m)
Temperature range (operation): 0°C to 40 °C
MTBF: 50,000 (Excluded backlight) hour(s)
Relative humidity: 20%-80 %
Temperature range (storage): -20°C to 60 °C

Sustainability

Environmental and energy: RoHS
Recyclable packaging material: 100 %
Specific Substances: Mercury free, PVC/BFR free housing
Post-consumer recycled plastics: 85%*

Compliance and standards

Regulatory Approvals: CB, CE Mark, TUV/ISO9241-307, TUV-BAUART, EAC, EAEU, RoHS, MEPS, PSB, KC, VCCI, UKCA, EMF, ICES-003

Cabinet

Colour: Charcoal
Finish: Textured

What's in the box?

Cables: HDMI cable, DisplayPort cable, Power cable
Monitor with stand
User Documentation



* "IPS" word mark / trademark and related patents on technologies belong to their respective owners.
* The maximum resolution works for either HDMI input or DP input.
* For best output performance, please always ensure that your graphics card is capable of achieving the maximum resolution and refresh rate of this Philips display.
* Response time value equal to SmartResponse
* Smart MBR adjusts brightness for blur reduction, so you cannot adjust brightness while Smart MBR is turned on. To reduce motion blur, the LED backlight will strobe synchronously with each screen refresh, which may cause a noticeable change in brightness.
* Smart MBR is a gaming-optimised mode. Turning on Smart MBR may cause noticeable screen flickering. We recommend turning it off when you are not using the gaming function.
* 2020 Advanced Micro Devices, Inc. All rights reserved. AMD, the AMD Arrow logo, AMD FreeSync™ and combinations thereof are trademarks of Advanced Micro Devices, Inc. Other product names used in this publication are for identification purposes only and may be trademarks of their respective companies.
* This monitor strives for sustainability: the stand's feet are made with 35% recycled plastic and the monitor's chassis is made up of 85% post-consumer recycled plastic.
* sRGB Area based on CIE1931
* Adobe RGB, DCI-P3 Coverage based on CIE1976.
* The products and accessories listed on this leaflet may differ by country and region.
* The monitor may look different from feature images.