

PHILIPS

Quad HD gaming
monitor

Fast VA Gaming
monitor

Evnia 3000

27" (68.5 cm)

2560 x 1440 (Quad HD)

27M2N3500AM



Broaden your gaming horizon

This fast VA monitor allows you to game with ultimate precision and speed at 180 Hz. With sharp HDR-quality imagery and Quad HD resolution guaranteed, this monitor produces an excellent all-around gaming experience.

Features designed for you

- Smart Crosshair: for better aim and more fun
- SmartImage game mode optimised for gamers
- EasySelect menu toggle key for quick on-screen menu access
- LowBlue mode and Flicker-free easy-on-the eyes viewing

Built for fast action

- 180 Hz refresh rates for ultra-smooth, brilliant images
- Fast VA Panel: For sharp imagery at high frame rates
- 0.5 ms ultra-fast speed for crisp images and smooth gameplay
- Low input lag reduces time delay between devices to monitor

Immersive visuals

- High Dynamic Range (HDR) for more lifelike colourful visuals
- SmartContrast for rich black details
- Crystal clear images with Quad HD 2560 x 1440 pixels

Fast VA Gaming monitor

Quad HD gaming monitor

27M2N3500AM/00

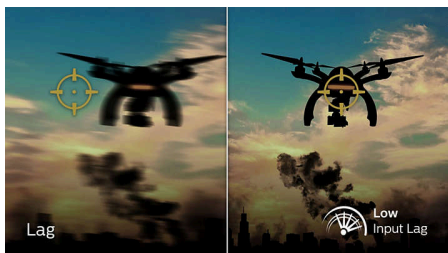
Highlights

180 Hz Gaming



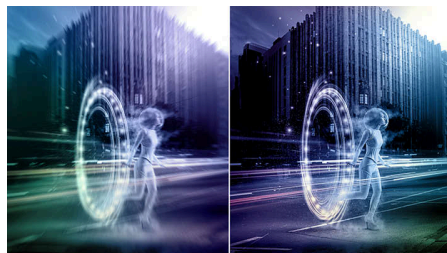
You play intense, competitive gaming. You demand display with lag-free, ultra-smooth images. This display redraws the screen image up to 180 times per second, effectively faster than a standard display. A lower frame rate can make enemies appear to jump from spot to spot on the screen, making them difficult targets to hit. With a 180 Hz frame rate, you get those critical missing images on the screen which show enemy movement in ultra-smooth motion so you can easily target enemies. With ultra-low input lag and no screen tearing, this Philips display is your perfect gaming partner.

Low input lag



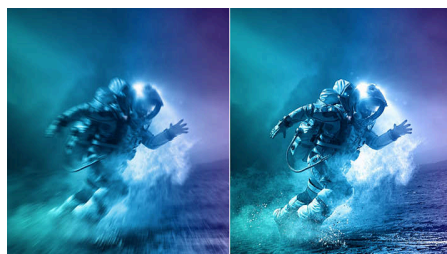
Input lag is the amount of time that elapses between performing an action with connected devices and seeing the result on screen. Low input lag reduces the time delay between entering a command from your devices to monitor, greatly improving play on twitch-sensitive video games, particularly important for playing fast-paced, competitive games.

0.5 ms Smart MBR fast response



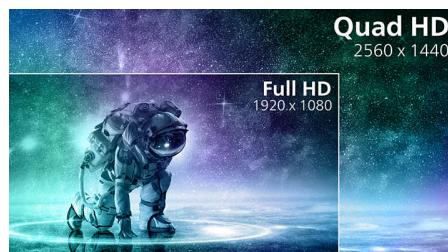
The Philips Evnia with 0.5 ms Smart MBR effectively eliminates smearing and motion blur, and delivers sharper and more precise visuals to enhance your gaming experience. Fast-moving action and dramatic transitions will be rendered smoothly. It's the best choice for playing thrilling and twitch-sensitive games.

Fast VA



This feature is made for action-packed gameplay. Not only does it produce virtually blur-free gaming, but it also pairs well with high frame rates for the best and sharpest imagery, guaranteed.

CrystalClear images



These Philips screens deliver CrystalClear, Quad HD 2560 x 1440 or 2560 x 1080 pixel images. Utilising high performance panels with a high-density pixel count enabled by high bandwidth sources, these new displays will make your

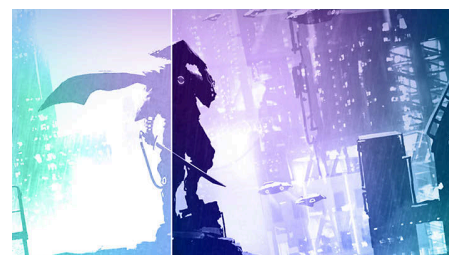
images and graphics come alive. Whether you are a demanding professional requiring extremely detailed information for CAD-CAM solutions using 3D graphic applications, or a financial wizard working on huge spreadsheets, Philips displays will give you CrystalClear images.

High Dynamic Range (HDR)



High Dynamic Range delivers a dramatically different visual experience. With astonishing brightness, incomparable contrast and captivating colour, images come to life with much greater brightness while also featuring much deeper, more nuanced darks. It renders a fuller palette of rich new colours never before seen on a display, giving you a visual experience that engages your senses and inspires emotions.

SmartContrast



SmartContrast is a Philips technology that analyses the contents you are displaying, automatically adjusting colours and controlling backlight intensity to dynamically enhance contrast for the best digital images and videos or when playing games where dark hues are displayed. When Economy mode is selected, contrast is adjusted and backlighting fine-tuned for just-right display of everyday office applications and lower power consumption.



Fast VA Gaming monitor

Quad HD gaming monitor

27M2N3500AM/00

Highlights

LowBlue Mode and Flicker-free



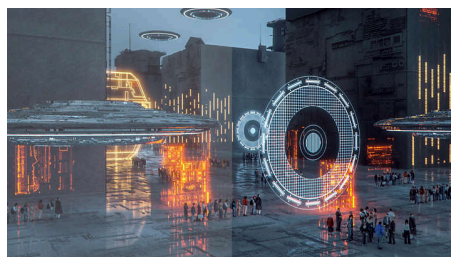
Our LowBlue Mode and Flicker-free technology have been developed to reduce eye strain and fatigue often caused by long hours in front of a monitor.

EasySelect Menu Toggle Key



The discreetly placed EasySelect Menu Toggle Key allows you to make quick and easy adjustments to monitor settings in the On-Screen Display menu.

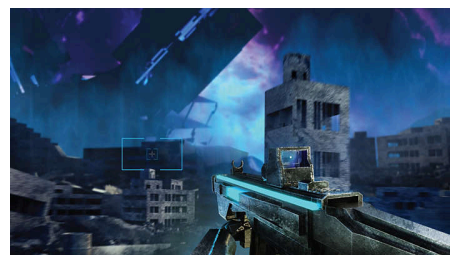
SmartImage Game mode



The new Philips gaming display has quick-access OSD fine-tuned for gamers, offering you multiple options. "FPS" mode (First person shooting)

improves dark themes in games, allowing you to see hidden objects in dark areas. "Racing" mode adapts the display with the fastest response time and high colour, along with image adjustments. "RTS" mode (Real-time strategy) has a special SmartFrame mode that enables highlighting of specific area and allows for size and image adjustments. Gamer 1 and Gamer 2 enable you to save personal customised settings based on different games, ensuring best performance.

Smart Crosshair



Colour of Crosshair is set by default. When Smart Crosshair is on, the colour will change to a colour that is complementary to the background colour. Smart Crosshair enhances the accuracy of aiming so you can spot the enemies much more easily.



Fast VA Gaming monitor

Quad HD gaming monitor

27M2N3500AM/00

Specifications

Picture/Display

Panel Size: 27 inch/68.5 cm

Aspect ratio: 16:9

LCD panel type: VA LCD

Backlight type: W-LED system

Pixel pitch: 0.2331 x 0.2331 mm

Brightness: 300 cd/m²

Display colours: 16.7 M

Colour gamut (typical): DCI-P3: 95*, sRGB 127%*, Adobe RGB 92%*

Contrast ratio (typical): 5000:1

SmartContrast: Mega Infinity DCR

Response time (typical): 1 ms (Grey to Grey)*

Viewing angle: 178° (H)/178° (V), @ C/R > 10

Picture enhancement: SmartImage game

Maximum resolution: 2560 x 1440 @ 144 Hz

(HDMI)/2560 x 1440 @ 180 Hz (DP)

Effective viewing area: 597.6 (H) x 336.15 (V)

Scanning Frequency: HDMI: 30 - 230 kHz (H)/48 - 144 Hz (V); DP: 30 - 270 kHz (H)/48 - 180 Hz (V)

sRGB

Delta E: <2 (sRGB)

Flicker-free

Pixel Density: 108.79 PPI

LowBlue Mode

Display Screen Coating: Anti-Glare, 3H, Haze 25%

Low Input Lag

EasyRead

Adaptive sync

HDR: HDR 10 supported

Smart Crosshair

Shadow Boost

Smart MBR: 0.5 ms*

Connectivity

Signal Input: HDMI 2.0 x 2, DisplayPort 1.4 x 1

Sync Input: Separate Sync

Audio (In/Out): Headphone out

HDCP: HDCP 1.4 (HDMI/DP), HDCP 2.2 (HDMI/DP)

Convenience

Plug and Play Compatibility: DDC/CI, Mac OS X, sRGB, Windows 11/10

User convenience: Power On/Off, Menu/OK, Input/Up, Game Settings/Down, SmartImage game/Back

OSD Languages: Brazil Portuguese, Czech, Dutch, English, Finnish, French, German, Greek, Hungarian, Italian, Japanese, Korean, Polish, Portuguese, Russian, Spanish, Simplified Chinese,

Swedish, Turkish, Traditional Chinese, Ukrainian

Other convenience: Kensington lock, VESA mount (100 x 100 mm)

Stand

Tilt: -5/20 degree

Power

Power supply: Internal, 100–240 VAC, 50–60 Hz

Off mode: 0.3 W (typ.)

On mode: 21.6 W (typ.)

Standby mode: 0.5 W (typ.)

Power LED indicator: Operation - White, Standby mode - White (flashing)

Dimensions

Packaging in mm (W x H x D):

690 x 420 x 141 mm

Product without stand (mm): 615 x 369 x 61 mm

Product with stand (max height):

615 x 463 x 193 mm

Weight

Product with packaging (kg): 6.88 kg

Product with stand (kg): 4.34 kg

Product without stand (kg): 3.73 kg

Operating conditions

Altitude: Operation: +12,000 ft (3658 m), Non-operation: +40,000 ft (12,192 m)

Temperature range (operation): 0°C to 40 °C

MTBF: 50 000 (Excluded backlight) hour(s)

Relative humidity: 20%-80 %

Temperature range (storage): -20°C to 60 °C

Sustainability

Environmental and energy: RoHS

Recyclable packaging material: 100 %

Specific Substances: Mercury free, PVC/BFR free housing

Post-consumer recycled plastics: 85%*

Compliance and standards

Regulatory Approvals: CB, CE Mark, FCC Class B, ICES-003, EAC, EAEU RoHS, TUV/ISO9241-307, TUV-BAUART, PSB, UKCA, EMF

Cabinet

Colour: Charcoal

Finish: Textured

What's in the box?

Cables: HDMI cable, DisplayPort cable, Power cable

Monitor with stand

User Documentation



* The maximum resolution works for either HDMI input or DP input.

* For best output performance, please always ensure that your graphic card is capable of achieving the maximum resolution and refresh rate of this Philips display.

* Response time value equal to SmartResponse

* Smart MBR adjusts brightness for blur reduction, so you cannot adjust brightness while Smart MBR is turned on. To reduce motion blur, the LED backlight will strobe synchronously with each screen refresh, which may cause a noticeable change in brightness.

* Smart MBR is a gaming-optimised mode. Turning on Smart MBR may cause noticeable screen flickering. We recommend turning it off when you are not using the gaming function.

* sRGB Area based on CIE 1976

* Adobe RGB Coverage based on CIE 1931

* DCI-P3 Coverage based on CIE1976

* This monitor strives for sustainability: the stand's feet are made with 35% recycled plastic and the monitor's chassis is made up of 85% post-consumer recycled plastic.

* The monitor may look different from feature images.

* The products and accessories listed on this leaflet may differ by country and region.