

PHILIPS

EVNIA



QD OLED gaming
monitor

Gaming Monitor

Evnia 8000

26.5" (67.3 cm)

2560 x 1440 (Quad HD)



27M2N8500

Gaming beyond innovation

This monitor is built for gaming at high speeds. Its 360 Hz refresh rates, QD OLED panel and DisplayHDR TrueBlack 400 certification make it a combination of incredible speed and premium picture quality.

Features designed for gamers' needs

- AI-enhanced Ambiglow: for intensified entertainment
- Evnia Precision Centre: Maximise Your Gaming Experience
- Dynamic Lighting: Synchronise lighting on all devices.
- SmartImage game mode optimised for gamers
- Tilt, swivel and height-adjust for an ideal viewing position
- LowBlue mode and Flicker-free easy-on-the eyes viewing
- Smart Crosshair: for better aim and more fun

Built for fast action

- AMD FreeSync™ Premium Pro; smooth, low latency HDR gaming
- 360 Hz refresh rate: for ultra-fast and ultra-clear gaming
- Certified NVIDIA® G-SYNC® compatible for smooth, fast gaming
- Low input lag reduces time delay between devices to monitor

Immersive visuals

- Crystal clear images with Quad HD 2560 x 1440 pixels

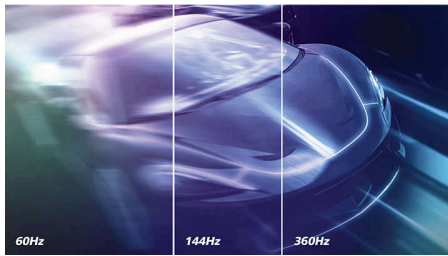
Gaming Monitor

QD OLED gaming monitor

27M2N8500/01

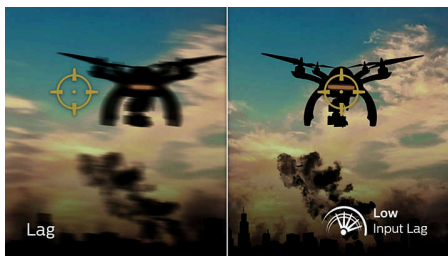
Highlights

360 Hz refresh rate



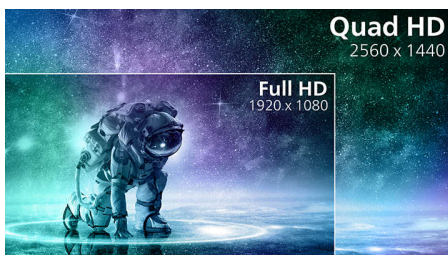
Be prepared to game up to 360 Hz with an accompanying picture definition that will leave a WOW factor. Reach goals and hit targets faster with show-stopping clarity: games will appear clean and crisp while you speed through levels and race through scenes.

Low input lag



Input lag is the amount of time that elapses between performing an action with connected devices and seeing the result on screen. Low input lag reduces the time delay between entering a command from your devices to monitor, greatly improving play on twitch-sensitive video games, particularly important for playing fast-paced, competitive games.

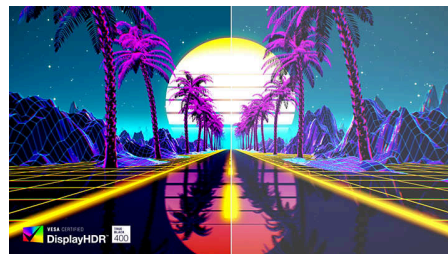
CrystalClear images



These Philips screens deliver CrystalClear, Quad HD 2560 x 1440 or 2560 x 1080 pixel images. Utilising high performance panels with a high-density pixel count enabled by high bandwidth sources, these new displays will make your images and graphics come alive. Whether you are a demanding professional requiring extremely detailed information for CAD-CAM

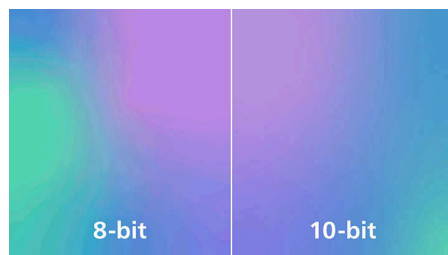
solutions using 3D graphic applications, or a financial wizard working on huge spreadsheets, Philips displays will give you CrystalClear images.

DisplayHDR™ True Black 400



This Philips monitor is certified with VESA DisplayHDR™ True Black 400, delivering stunningly accurate shadow details with deeper blacks for a remarkable visual experience compared with conventional monitors of the same peak luminance. This Philips monitor comes with several HDR modes, each optimised for your usage scenarios: HDR Game, HDR Movie, HDR Photo and VESA DisplayHDR-certified level.

True 10-bit colour depth



With this Philips true 10-bit colour display, you can see colour-critical professional work of exceptional colour accuracy that meets professional standards. Compared with conventional 8-bit colour displays, this Philips monitor produces a more natural transition between hues for smoother gradients.

QD OLED technology



QD-OLED represents a hybrid approach that marries OLED panels and quantum dot technology. By combining what's best of both,

QD-OLED guarantees high contrast, deep blacks and unlimited viewing angles, with a higher peak brightness and more vibrant colours.

LowBlue mode and Flicker-free



Our LowBlue Mode and Flicker-free technology have been developed to reduce eye strain and fatigue often caused by long hours in front of a monitor.

AI-enhanced Ambiglow



Our AI-enhanced processor analyses the incoming image content and continuously adapts the colour and brightness of the emitted light to match the image. This feature adds a new dimension to your viewing experience. The innovative Ambiglow uses its AI capabilities to create a truly immersive and customisable gaming experience. From filling your gaming room with colour to feeling like you are part of the game, the AI-enhanced Ambiglow is made to make your gaming experience the best it's ever been by combining intelligence, colour and light.



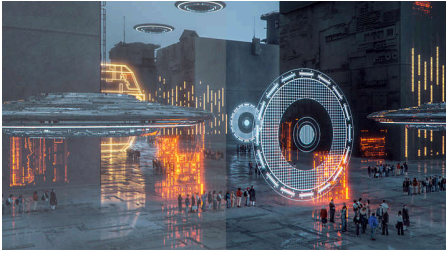
Gaming Monitor

QD OLED gaming monitor

27M2N8500/01

Highlights

SmartImage Game mode



The new Philips gaming display has quick-access OSD fine-tuned for gamers, offering you multiple options. "FPS" mode (First person shooting) improves dark themes in games, allowing you to see hidden objects in dark areas. "Racing" mode adapts the display with the fastest response time and high colour, along with image adjustments. "RTS" mode (Real-time strategy) has a special SmartFrame mode that enables highlighting of specific area and allows for size and image adjustments. Gamer 1 and Gamer 2 enable you to save personal customised settings based on different games, ensuring best performance.

Compact Ergo Base



The Compact Ergo Base is a people-friendly Philips monitor base that tilts, swivels and height-adjusts so each user can position the monitor for maximum viewing comfort and efficiency.

Smart Crosshair



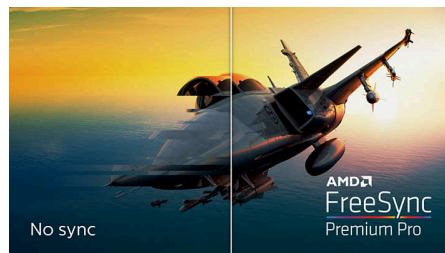
Colour of Crosshair is set by default. When Smart Crosshair is on, the colour will change as a complementary colour to the background colour. Smart Crosshair enhances the aiming accuracy so you can spot the enemies more easily.

Dynamic Lighting



This feature is a Microsoft certification program that enables users with Windows 11 to synchronise and manage the RGB lighting of all of their monitors and peripherals from one menu. By doing this, the Dynamic Lighting feature creates a complete RGB lighting ecosystem with Philips Evnia Ambiglow across all devices that ultimately caters to a customisable user experience.

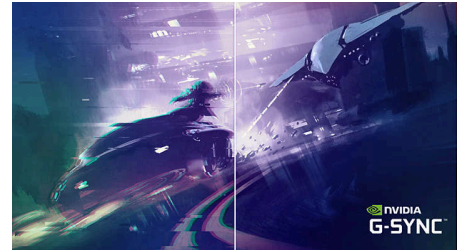
AMD FreeSync™ Premium Pro



Gaming shouldn't be a choice between choppy gameplay or broken frames. AMD FreeSync™ Premium Pro provides the true HDR gaming

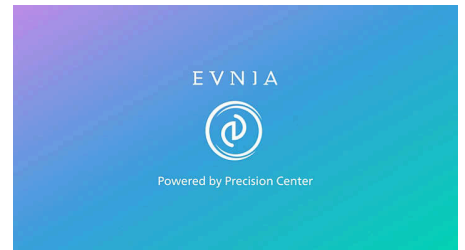
experience: a combination of smooth gaming at peak performance and exceptional high dynamic range visuals while still maintaining low latency.

NVIDIA® G-SYNC® compatible



When playing intense games with high refresh rates, screen tearing may appear without optimal graphics synchronisation. This Philips display is certified as NVIDIA® G-SYNC® compatible, reducing screen tearing and syncing your monitor's refresh rate with your graphic card's output for a smoother gaming experience. Scenes appear instantly, objects look sharper, and gameplay is smooth, giving you a stunning visual experience and a serious competitive edge.

Evnia Precision Centre



Evnia Precision Centre is an easy-to-use software designed to optimise and personalise your Evnia monitor. Whether you're a casual or competitive gamer, it offers a wide range of customisation options to match your unique gaming style. With intuitive controls and seamless navigation, Evnia Precision Centre gives you full control, providing everything you need to elevate your gaming to the next level — right at your fingertips.



Specifications

Picture/Display

Panel Size: 26.5 inch/67.3 cm

Aspect ratio: 16:9

Monitor Panel Type: QD OLED

Pixel pitch: 0.2292 x 0.2292 mm

Brightness: SDR: 250 (APL 100%) nit, HDR: 450 (APL 10%) nit, HDR E/P: 1000 (APL 3%) nit

Display colours: Colour support 1.07 billion colours (10-bit)

Colour gamut (typical): DCI-P3:98.5%, sRGB: 147.5%, NTSC 120%, Adobe RGB 118%*

Contrast ratio (typical): 1,500,000:1

SmartContrast: Mega Infinity DCR

Response time (typical): 0.03 ms (Grey to Grey)*

Viewing angle: 178° (H)/178° (V), @ C/R > 10000

Picture enhancement: SmartImage game

Maximum resolution: HDMI/DP:

2560 x 1440 @ 360 Hz

Effective viewing area: 590.42 (H) x 333.72 (V) mm

Scanning Frequency: 30–510 kHz (H)/48–360 Hz (V)

sRGB

Delta E: <2 (sRGB)

Flicker-free

Pixel Density: 110.84 PPI

LowBlue Mode

Display Screen Coating: Anti-reflection, 2H

Low Input Lag

EasyRead

AMD FreeSync™ technology: Premium Pro G-SYNC

HDR: DisplayHDR True Black 400 certified

Ambiglow: 3 sided

Pixel format: RGB Q-Stripe*

Smart Sniper

Clear MR Tier: 13,000

Stark Shadow Boost

Windows Dynamic Lighting

Smart Crosshair

Shadow Boost

Connectivity

Signal Input: HDMI 2.1 x 2, DisplayPort 1.4 x 1, USB-B x 1

Sync Input: Separate Sync

Audio (In/Out): Headphone out

HDCP: HDCP 1.4 (HDMI/DisplayPort), HDCP 2.2 (HDMI/DisplayPort), HDCP 2.3 (HDMI/DisplayPort)

USB Hub: USB-B upstream x 1, USB-A

downstream x 2 (downstream with x 1 fast charge B.C 1.2), USB 3.2 Gen 1/5 Gbps

Convenience

Built-in Speakers: 5 W x 2

Plug and Play Compatibility: DDC/CI, Mac OS, sRGB, Windows 11/10

User convenience: Power On/Off, Menu/OK, Input/Up, Game Settings/Down, SmartImage game/Back

OSD Languages: Brazil Portuguese, Czech, Dutch, English, Finnish, French, German, Greek, Hungarian, Italian, Japanese, Korean, Polish, Portuguese, Russian, Spanish, Simplified Chinese, Swedish, Turkish, Traditional Chinese, Ukrainian

Other convenience: Kensington lock, VESA mount (100 x 100 mm), VESA bracket, LowBlue Mode

MultiView: PIP/PBP mode, 2 x devices

Low blue light: Low blue light compliance*

Stand

Height adjustment: 130 mm

Swivel: -/+ 20 degree

Tilt: -5/20 degree

Power

Power supply: Internal, 100–240 VAC, 50–60 Hz

Off mode: 0.3 W (typ.)

On mode: 83.70 W (typ.)

Standby mode: 0.5 W (typ.)

Power LED indicator: Operation - White, Standby mode - White (flashing)

Energy Label Class: G

Dimensions

Packaging in mm (W x H x D):

780 x 455 x 141 mm

Product without stand (mm):

609.3 x 357.7 x 61 mm

Product with stand (max height):

609.3 x 513.7 x 274.5 mm

Weight

Product with packaging (kg): 11.01 kg

Product with stand (kg): 7.35 kg

Product without stand (kg): 6.00 kg

Operating conditions

Altitude: Operation: +12,000 ft (3658 m), Non-operation: +40,000 ft (12,192 m)

Temperature range (operation): 0°C to 40 °C
MTBF: 30,000 hour(s)

Relative humidity: 20%-80 %

Temperature range (storage): -20°C to 60 °C

Sustainability

Environmental and energy: RoHS

Recyclable packaging material: 100 %

Specific Substances: Mercury free, PVC/BFR free housing

Post-consumer recycled plastics: 35%*

Compliance and standards

Regulatory Approvals: CB, CE Mark, ETL, CEC, TUV/ISO9241-307, TUV-BAUART, EAC, EAEU RoHS, CEL, CCC, UKCA, EMF, FCC, ICES-003

Cabinet

Colour: White

Finish: Textured

What's in the box?

Cables: DP cable, HDMI cable, USB Upstream (B-A), Power cable

Monitor with stand

User Documentation

* Response time value equal to SmartResponse. The measurement pattern is 1 horizontal line.

* DCI-P3 Coverage based on CIE1976, sRGB Area based on CIE1931, NTSC Area and Adobe RGB Area based on CIE1976.

* Active pixels: 2560 (H) x 1440 (V). Number of total pixels: 2576 (H) x 1456 (V); extra pixels on each side, space reserved for pixel orbiting.

* The ratio of display emission light in the range from 415 - 455 nm to the display emission of 400 - 500 nm shall be less than 50%.

* For best output performance, please always ensure that your graphic card is capable of achieving the maximum resolution and refresh rate of this Philips display.

* This monitor strives for sustainability: the base is made with 35% recycled plastic.

* The monitor may look different from feature images.

* The products and accessories listed on this leaflet may differ by country and region.

* 2020 Advanced Micro Devices, Inc. All rights reserved.

AMD, the AMD Arrow logo, AMD FreeSync™ and combinations thereof are trademarks of Advanced Micro Devices, Inc. Other product names used in this publication are for identification purposes only and may be trademarks of their respective companies.

* NVIDIA® G-SYNC® support interface: DisplayPort

* Make sure to update NVIDIA® G-SYNC® driver to the latest version, see more information on NVIDIA website: <https://www.nvidia.com/>

* Make sure that your graphic card supports NVIDIA® G-SYNC®

