

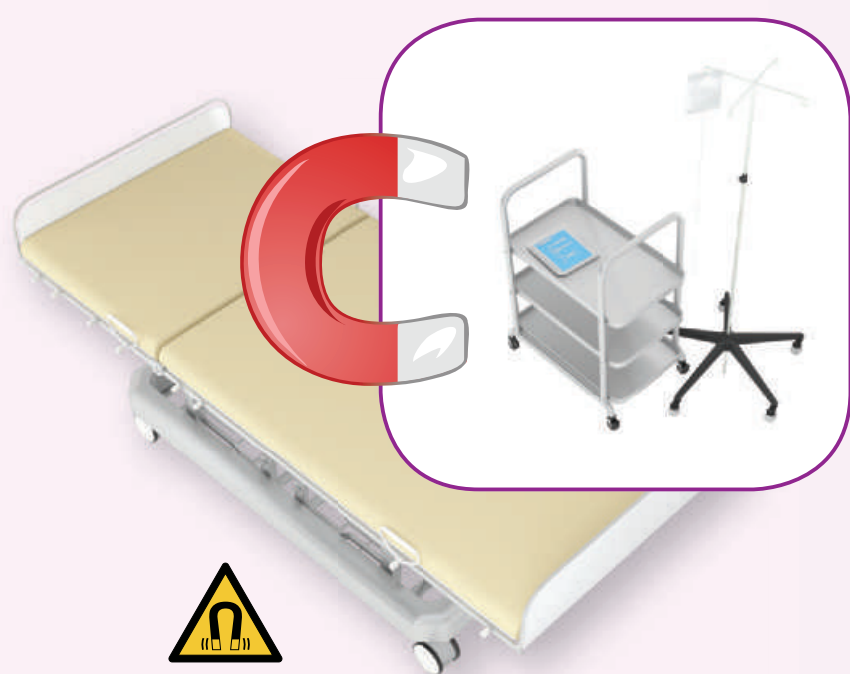


Safe and comfortable examination of patients is a key priority for operators. This poster highlights the basic safety guidelines. It is not a replacement for the Instruction for Use. You must also read and understand chapter 2 of the Instructions for Use. If any part is unclear, please contact your local safety officer, physicist or applications specialist.

Screen all patients for contra-indications and increased risks

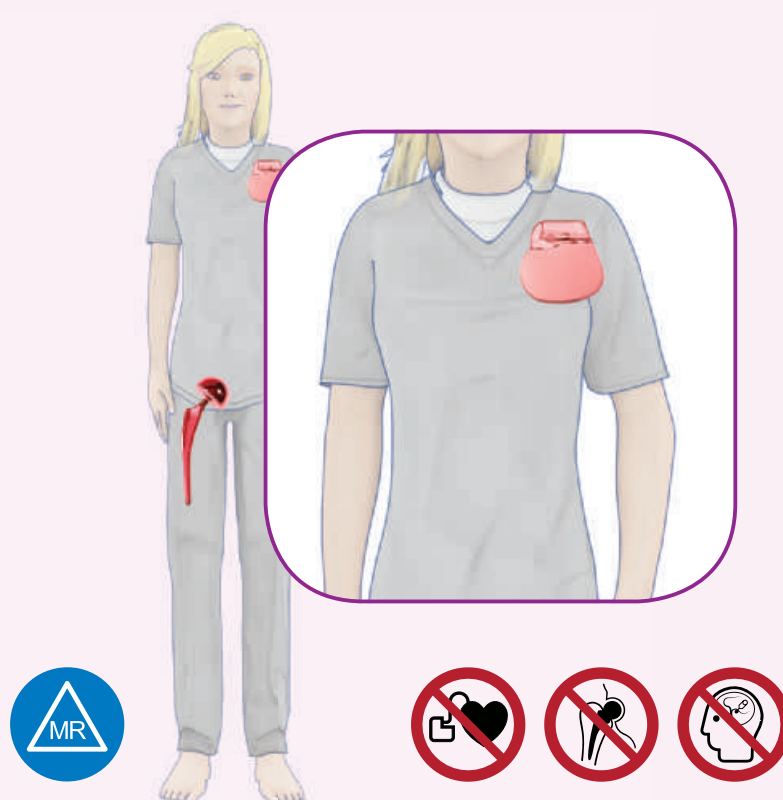


MR the safe way



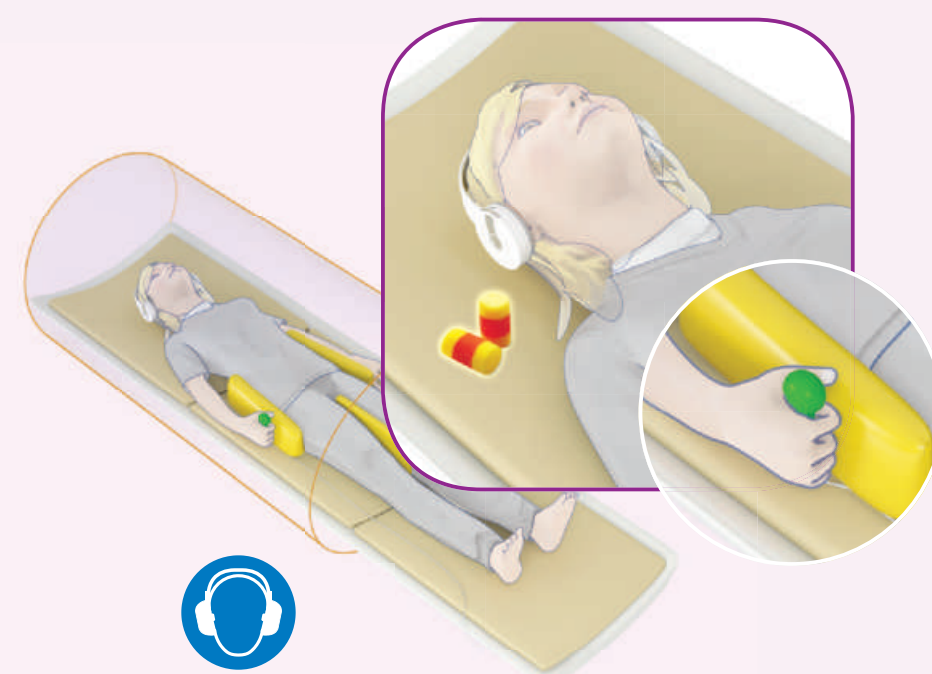
Projectile Effects

Do not bring ferro-magnetic objects into the examination room. The attraction by the magnet may lead to serious or fatal injury to the patient.



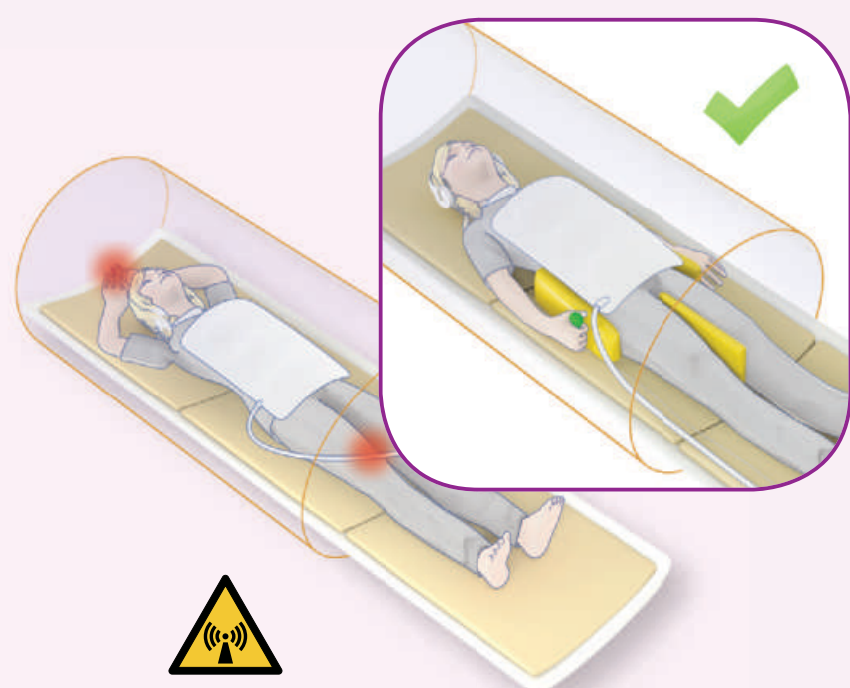
Implants

Adhere strictly to the conditions as specified by the implant manufacturer. If conditions are not known, do not scan.



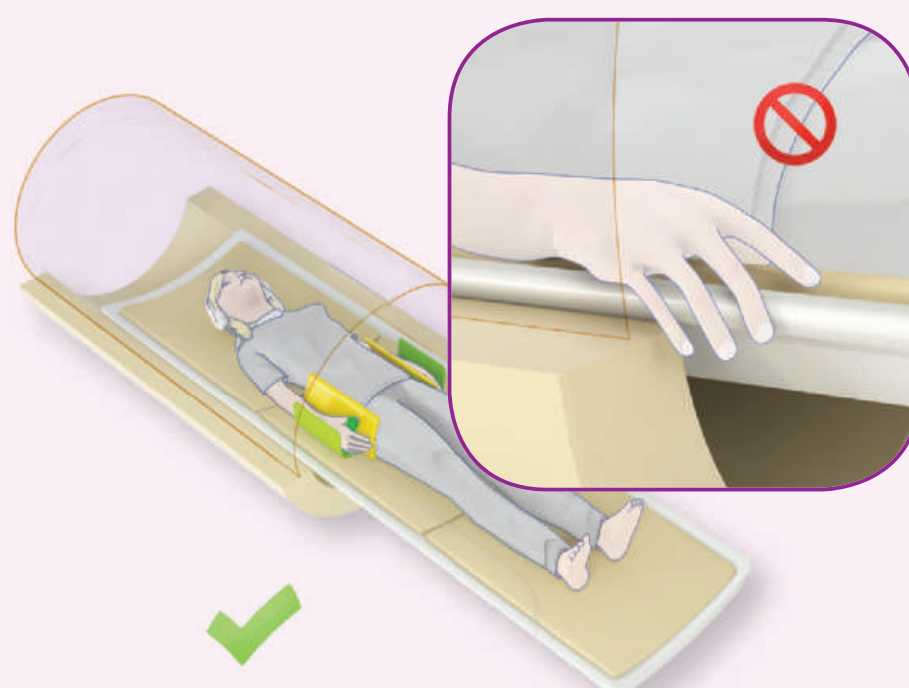
Nurse Call / Hearing Protection

Use the nurse call with every patient and give instructions about its use. Provide appropriate hearing protection for every patient and anyone else in the room.



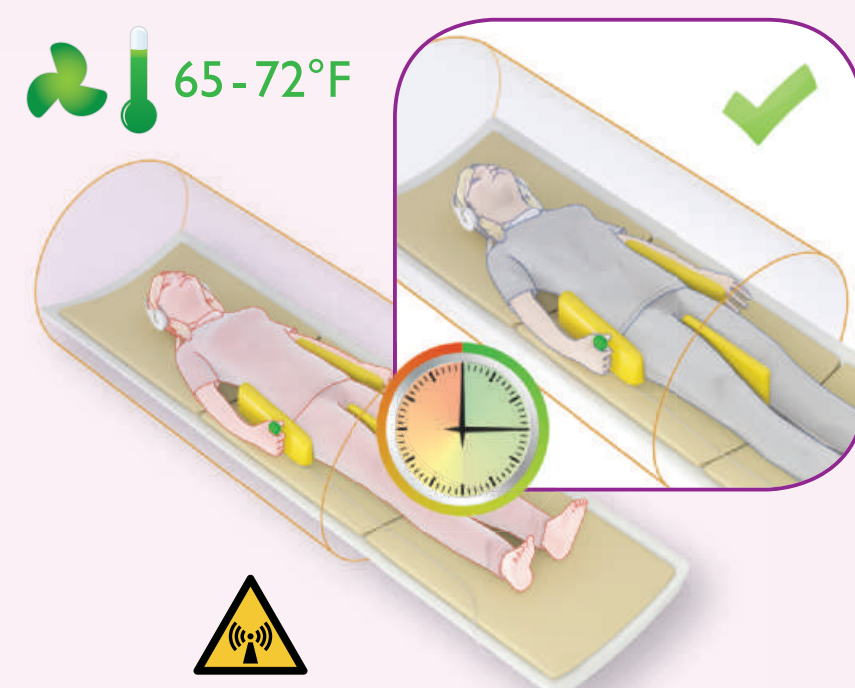
Patient Positioning

Prevent contact between body parts or skin and coil cables. Verify clearance between body parts and the bore wall.



Finger Pinching

Verify that patient's hands are on the tabletop before moving the tabletop into the magnet.



RF Energy Exposure

Warming sensations are to be expected in MRI, they are caused by the RF power needed to acquire images. Take appropriate precautions to prevent heat dissipation from becoming a hazard.



www.philips.com/mrisafety

PHILIPS