

PHILIPS

NORELCO

Face

OneBlade 360 with connectivity

Trim, edge, shave

360 blade

5-in-1 adjustable comb

Personalized experience



QP4530/90



Trim, edge and shave any hair length effortlessly Designed to cut hair, not skin

The new Philips Norelco OneBlade with connectivity trims, edges and shaves any length of hair, even the most difficult to reach areas with fewer passes*. Forget about using multiple steps and tools. OneBlade does it all.

Easy to use

- Charge anytime, anywhere
- Water resistant: Use wet & dry
- Fully waterproof
- 60 min Li-ion battery
- Connected, personalized experience

Comfortable shave

- Unique OneBlade Technology
- Adjusts to every curve of your face

Sharp edges

- Create precise edges & sharp lines with the dual-sided blade

Even trim

- 5-in-1 adjustable comb

Highlights

Unique OneBlade Technology



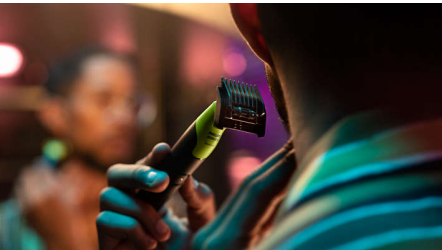
The Philips OneBlade has a revolutionary technology designed for facial grooming. It can shave any length of hair. Its dual protection system a glide coating combined with rounded tips makes shaving easier and comfortable. Its shaving technology features a fast-moving cutter (12000x per min) so it's efficient - even on longer hairs.

Innovative 360 Blade



The innovative 360 Blade can flex in all directions to adjust to the curves of your face. The design enables constant skin contact and control. Easily trim and shave hard-to-reach areas — with few strokes and great comfort.

Trim away



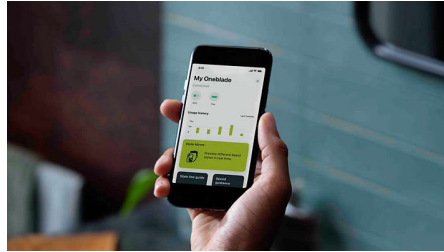
Unique open comb design for an efficient trim without clogging and interrupting your routine - even on long and thick hair.

Dual-sided blade



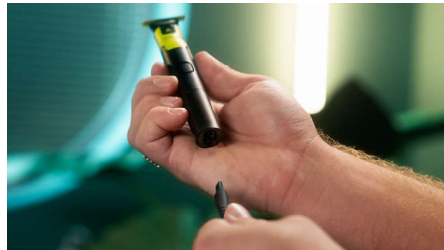
OneBlade follows the contours of your face, allowing you to easily and comfortably shave all areas. Use the dual-sided blade to style your edges and create clean lines by moving the blade in any direction.

Philips Daily Care app



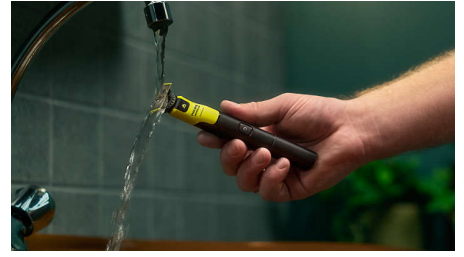
The free Philips Daily Care app is your ticket to styling and performance. Try on facial hair styles using augmented reality and get step-by-step guidance that includes a handy live beard-line previewer. Know when to switch up a blade or charge up the battery. And get personalized recommendations based on your actual grooming routine.

USB-A charging



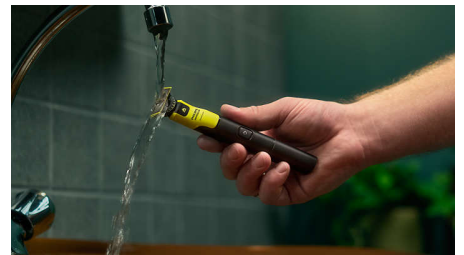
Can be charged at home or on the road, perfect for your daily routine and for travel. Power adapter not included.

Wet & dry



You can shave wet or dry, with or without foam - whichever you prefer.

Waterproof



OneBlade is fully waterproof, so it is easy to clean: just rinse it under the tap.

60 min Li-ion battery



Rechargeable Li-ion battery delivers 60 minutes of constant shaving power after a 1 hour charge.

Specifications

Trimming & shaving performance

Shaving system: Contour-following technology, Dual protection system, 360 Blade

Trimming system: Contour-following technology, 360 Blade

Accessories

Comb: 5-in-1 adjustable comb

Maintenance: Protection cap

Software

Software update: Philips offers relevant software updates for a period of 2 years after the date of purchase

Power

Battery type: Li-ion

Charging: 1 hour full charge

Run time: 60 minutes

Automatic voltage: 100–240 V

Max power consumption: 5.4 W

Adaptor type: USB-A

Design

Color: Lime green, charcoal grey

Handle: Ergonomic grip & handling

Service

2-year warranty: 2-year warranty on the handle

Replacement head: Replace every 4 months*, QP410, QP420, QP430, QP610, QP620

Ease of use

Display: Charging indicator

Charging: USB-A Charging

Connectivity

Wet and dry usage

Fully Waterproof

USB-A Charging: Power adapter not included



* Vs predecessor QP210

**For best shaving experience. Based on 2 full shaves per week. Actual results may vary.