

PHILIPS



QD OLED gaming
monitor

Gaming Monitor

Evnia 8000

26.5" (67.3cm)

2560 x 1440 (Quad HD)



27M2N8500

Gaming beyond innovation

This monitor is built for gaming at high speeds. Its 360Hz refresh rates, QD OLED panel, and DisplayHDR TrueBlack 400 certification make it a combination of incredible speed and premium picture quality.

Features designed for gamers needs

- AI-enhanced Ambiglow: for intensified entertainment
- Evnia Precision Center: Maximize Your Gaming Experience
- Dynamic Lighting: Synchronize lighting on all devices.
- SmartImage game mode optimized for gamers
- Tilt, swivel and height-adjust for an ideal viewing position
- LowBlue mode and Flicker-free easy-on-the eyes viewing
- Smart Crosshair: for better aim and more fun

Built for fast action

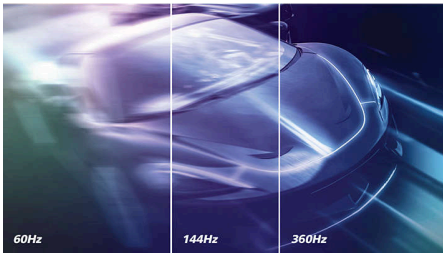
- AMD FreeSync™ Premium Pro; smooth, low latency HDR gaming
- 360Hz refresh rate: For ultra-fast and ultra-clear gaming
- Certified NVIDIA® G-SYNC® compatible for smooth fast gaming
- Low input lag reduces time delay between devices to monitor

Immersive visuals

- Crystalclear images with Quad HD 2560 x 1440 pixels

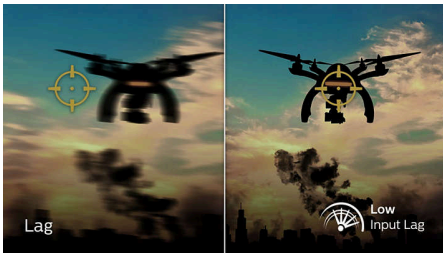
Highlights

360Hz refresh rate



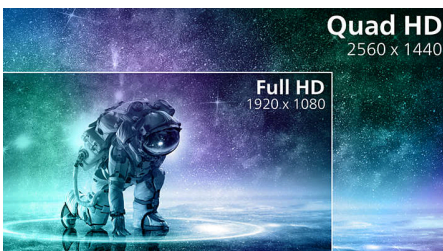
Be prepared to game up to 360Hz with an accompanying picture definition that will leave a WOW factor. Reach goals and hit targets faster and, not to mention, with show-stopping clarity: Games will appear clean and crisp while you speed through levels and race through scenes.

Low input lag



Input lag is the amount of time that elapses between performing an action with connected devices and seeing the result on screen. Low input lag reduces the time delay between entering a command from your devices to monitor, greatly improve on playing twitch-sensitive video games, particularly important to whom plays fast-paced, competitive games.

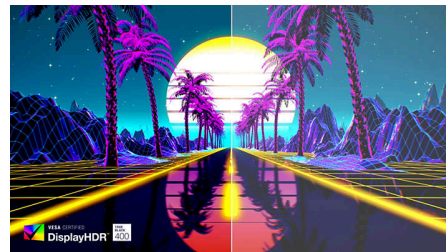
Crystalclear images



These Philips screens deliver Crystalclear, Quad HD 2560x1440 or 2560x1080 pixel images. Utilizing high performance panels with high

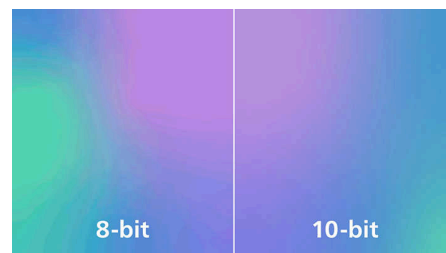
density pixel count, enabled by high bandwidth sources like USB-C, Displayport, HDMI, these new displays will make your images and graphics come alive. Whether you are demanding professional requiring extremely detailed information for CAD-CAM solutions, using 3D graphic applications or a financial wizard working on huge spreadsheets, Philips displays will give you Crystalclear images.

DisplayHDR™ True Black 400



This Philips monitor is certified with VESA DisplayHDR™ True Black 400. Delivering stunningly accurate shadow detail with deeper blacks for a remarkable visual experience compared with conventional monitors of the same peak luminance. This Philips monitor comes with several HDR modes, each optimized for your usage scenarios: HDR Game, HDR Movie, HDR Photo, and VESA DisplayHDR certified level.

True 10-bit color depth



With this Philips true 10-bit color display, you can see color critical professional work of exceptional color accuracy and meeting professional standards. Compared with conventional 8-bit color display, this Philips monitor produces a more natural transition between hues for smoother gradients.

QD OLED technology



QD-OLED represents a hybrid approach that marries the OLED panels and quantum dot technology. By combining what's best of both, QD-OLED guarantees high contrast, deep blacks, and unlimited viewing angles, with the higher peak brightness and more vibrant colors.

LowBlue mode & Flicker-free



Our LowBlue Mode and Flicker-free technology have been developed to reduce eye strain and fatigue often caused by long hours in front of a monitor.



Gaming Monitor

QD OLED gaming monitor

27M2N8500/27

Highlights

AI-enhanced Ambiglow



Our AI-enhanced processor analyzes the incoming image content and continuously adapts the color and brightness of the emitted light to match the image. This feature adds a new dimension to your viewing experience. The innovative Ambiglow uses its AI capabilities to create a truly immersive and customizable gaming experience. From filling your gaming room with color to feeling like you are part of the game, the AI-enhanced Ambiglow is made to make your gaming experience the best it's ever been by combining intelligence, color, and light.

SmartImage Game mode



The new Philips gaming display has quick access OSD fine tuned for gamers, offering you multiple options. "FPS" mode (First person shooting)

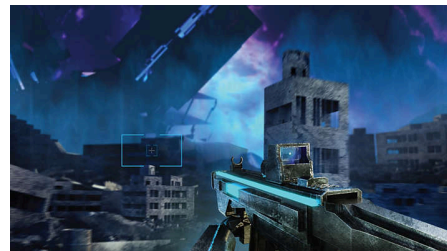
improves dark themes in games, allowing you to see hidden objects in dark areas. "Racing" mode adapts display with fastest response time, high color, along with image adjustments. "RTS" mode (Real time strategy) has a special SmartFrame mode which enables highlighting of specific area and allows for size and image adjustments. Gamer 1 and Gamer 2 enable you to save personal customized settings based on different games, ensuring best performance.

Compact Ergo Base



The Compact Ergo Base is a people-friendly Philips monitor base that tilts, swivels and height-adjusts so each user can position the monitor for maximum viewing comfort and efficiency.

Smart Crosshair



Color of Crosshair is set by default. When Smart Crosshair is on, the color will change as complementary color to the background color. Smart Crosshair enhances the accuracy of aiming so you can spot the enemies more easily.

Dynamic Lighting



This feature is a Microsoft certification program that enables with users Windows 11 to synchronize and manage the RGB lighting of all their monitors and peripherals from one menu. By doing this, the Dynamic Lighting feature creates a complete RGB lighting ecosystem with Philips Evnia Ambiglow across all devices that ultimately caters to a customizable user experience.



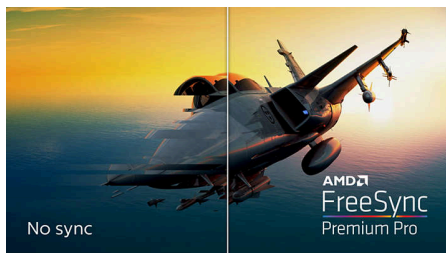
Gaming Monitor

QD OLED gaming monitor

27M2N8500/27

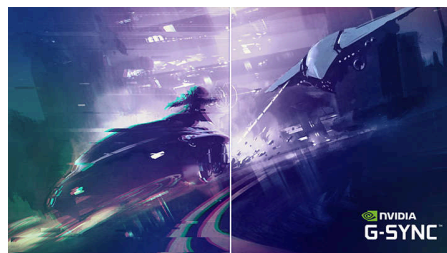
Highlights

AMD FreeSync™ Premium Pro



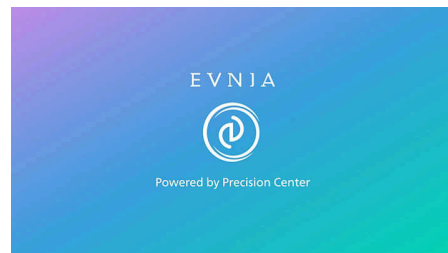
Gaming shouldn't be a choice between choppy gameplay or broken frames. AMD FreeSync™ Premium Pro provides the true HDR gaming experience: a combination of smooth gaming at peak performance, and exceptional high dynamic range visuals while still maintaining low latency.

NVIDIA® G-SYNC® compatible



When playing intense games with high refresh rates, screen tearing may appear without optimal graphics synchronization. This Philips display is certified as NVIDIA® G-SYNC® compatible, reducing screen tearing and syncing your monitor's refresh rate with your graphic card's output for a smoother gaming experience. Scenes appear instantly, objects look sharper, and gameplay is smooth, giving you a stunning visual experience and a serious competitive edge.

Evnia Precision Center



Evnia Precision Center is an easy-to-use software designed to optimize and personalize your Evnia monitor. Whether you're a casual or competitive gamer, it offers a wide range of customization options to match your unique gaming style. With intuitive controls and seamless navigation, Evnia Precision Center gives you full control, providing everything you need to elevate your gaming to the next level—right at your fingertips.



Gaming Monitor

QD OLED gaming monitor

27M2N8500/27

Specifications

Picture/Display

Panel Size: 26.5 inch / 67.3 cm
Aspect ratio: 16:9
Monitor Panel Type: QD OLED
Pixel pitch: 0.2292x0.2292mm
Brightness: SDR: 250 (APL 100%) nit, HDR: 450 (APL 10%) nit, HDR E/P: 1000 (APL 3%) nit
Display colors: Color support 1.07 billion colors (10 bits)
Color gamut (typical): DCI-P3:98.5%, sRGB: 147.5%, NTSC 120%, Adobe RGB 118%*
Contrast ratio (typical): 1,500,000:1
SmartContrast: Mega Infinity DCR
Response time (typical): 0.03 ms (Gray to Gray)*
Viewing angle: 178° (H) / 178° (V), @ C/R > 10000
Picture enhancement: SmartImage game
Maximum resolution: HDMI/DP: 2560 x 1440 @ 360 Hz
Effective viewing area: 590.42(H)x333.72(V)mm
Scanning Frequency: 30 - 510K kHz (H) / 48 - 360 Hz (V)
sRGB
Delta E: <2 (sRGB)
Flicker-free
Pixel Density: 110.84 PPI
LowBlue Mode
Display Screen Coating: Anti-reflection, 2H
Low Input Lag
EasyRead
AMD FreeSync™ technology: Premium Pro G-SYNC
HDR: DisplayHDR True Black 400 certified
Ambiglow: 3-sided
Pixel format: RGB Q-Stripe*
Clear MR Tier: 13000
Smart Sniper
Stark Shadow Boost
Windows Dynamic Lighting
Smart Crosshair
Shadow Boost

Connectivity

Signal Input: HDMI 2.1 x 2, DisplayPort 1.4 x 1, USB-B x 1
Sync Input: Separate Sync
Audio (In/Out): Headphone out
HDCP: HDCP 1.4 (HDMI / DisplayPort), HDCP 2.2 (HDMI / DisplayPort)

USB Hub: USB-B upstream x1, USB-A downstream x2 (downstream with x1 fast charge B.C 1.2), USB 3.2 Gen 1 / 5 Gbps

Convenience

Built-in Speakers: 5 W x 2
Plug & Play Compatibility: DDC/CI, Mac OS X, sRGB, Windows 11 / 10
User convenience: Power On/Off, Menu/OK, Input/Up, Game Settings/Down, SmartImage game/Back
OSD Languages: Brazil Portuguese, Czech, Dutch, English, Finnish, French, German, Greek, Hungarian, Italian, Japanese, Korean, Polish, Portuguese, Russian, Spanish, Simplified Chinese, Swedish, Turkish, Traditional Chinese, Ukrainian
Other convenience: Kensington lock, VESA mount (100x100mm), VESA bracket, LowBlue Mode
MultiView: PIP/PBP mode, 2x devices
Low blue light: Low blue light compliance*

Stand

Height adjustment: 130 mm
Swivel: +/- 30 degree
Tilt: -5/20 degree

Power

Power supply: Internal, 100-240VAC, 50-60Hz
Off mode: 0.3 W (typ.)
On mode: 83.70 W (typ.)
Standby mode: 0.5 W (typ.)
Power LED indicator: Operation - White, Standby mode- White (blinking)
Energy Label Class: G

Dimensions

Packaging in mm (WxHxD): 780 x 455 x 141 mm
Product without stand (mm): 609.3 x 357.7 x 61 mm
Product with stand(max height): 609.3 x 513.7 x 274.5 mm

Weight

Product with packaging (kg): 11.01 kg
Product with stand (kg): 7.35 kg
Product without stand (kg): 6.00 kg

Operating conditions

Altitude: Operation: +12,000ft (3,658m), Non-operation: +40,000ft (12,192m)
Temperature range (operation): 0°C to 40 °C
MTBF: 30,000 hour(s)
Relative humidity: 20%-80 %
Temperature range (storage): -20°C to 60 °C

Sustainability

Environmental and energy: RoHS
Recyclable packaging material: 100 %
Specific Substances: Mercury free, PVC / BFR free housing
Post consumer recycled plastics: 35%*

Compliance and standards

Regulatory Approvals: CB, CE Mark, ETL, CEC, TUV/ISO9241-307, TUV-BAUART, EAC, EAEU RoHS, CEL, CCC, UKCA, EMF, FCC, ICES-003

Cabinet

Color: White
Finish: Textured



* Response time value equal to SmartResponse. The measurement pattern is 1 horizontal line.
* DCI-P3 Coverage based on CIE1976, sRGB Area based on CIE1931, NTSC Area and Adobe RGB Area based on CIE1976
* Active pixels: 2560(H) x 1440(V). Number of total pixels: 2576(H) x 1456(V); extra pixels on each side, space reserved for pixel orbiting.
* For best output performance, please always ensure that your graphic card is capable of achieving the maximum resolution and refresh rate of this Philips display.
* The ratio of display emission light in the range from 415 - 455 nm to the display emission of 400 - 500 nm shall be less than 50%.
* This monitor strives for sustainability: the base is made with 35% recycled plastic.
* The monitor may look different from feature images.
* The products and accessories listed on this leaflet may differ by country and region.
* 2020 Advanced Micro Devices, Inc. All rights reserved. AMD, the AMD Arrow logo, AMD FreeSync™ and combinations thereof are trademarks of Advanced Micro Devices, Inc. Other product names used in this publication are for identification purposes only and may be trademarks of their respective companies.
* NVIDIA® G-SYNC® support interface: DisplayPort
* Make sure to update NVIDIA® G-SYNC® driver to the latest version, see more information on NVIDIA website: <https://www.nvidia.com/>
* Make sure your graphic card supports NVIDIA® G-SYNC®