

# PHILIPS



## Air Styler

### 3000 Series

3 attachments

Ceramic Argan Oil



BHA301/00

## Easy hairstyling for all hair length

Dry & style at once - the Philips Air Styler Essential allows you to create beautiful natural styles, whilst providing care to your hair. The 3 attachments are suitable for both long and short hair, so you can enjoy easy styling.

### Easy to use

- Cool air setting for gentle drying

### Beautifully styled hair

- 800W styling power for salon-like results
- Three flexible heat and speed settings for easy control
- 38 mm ThermoBrush for smooth styles and waves
- Narrow concentrator for focused airflow
- 22 mm ThermoBrush for easy curling

### Care and protect

- Care setting for better protection while drying and styling
- Argan-oil infused brush

## 3000 Series

Air Styler

BHA301/00

# Highlights

### 800W

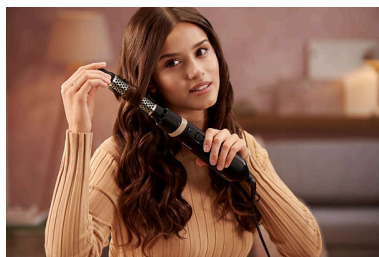


The Air Styler with 800W airflow for a gentle drying and styling. Achieve salon-like results every day.

### 38 mm ThermoBrush

The ThermoBrush has an extra wide diameter of 38 mm. The width of the barrel makes it the perfect styling tool for creating smooth styles and waves.

### 22 mm ThermoBrush



The ThermoBrush has a small diameter of 22 mm. The width of the barrel makes it the perfect styling tool for easy curling.

### Narrow concentrator



Use the narrow concentrator for the focused airflow for precise styling or touch-ups.

### Three flexible settings

Enjoy the combined three heat and two speed settings which will create the perfect end result. You can choose between a low and high speed setting with 3 corresponding heat settings; Cool, Care and High. The flexible settings ensure a powerful airflow with a caring temperature for a precise and tailored styling.

### Cool air setting

The Cool air setting uses low heat to gently dry your hair. It works especially well with fine, dry or damaged hair.

### Care setting

The 'Care' setting ensures the optimum drying temperature and guards against overheating. Hair still dries fast, with the same powerful airflow but at a constant, caring temperature.

### Argan-oil infused brush

The airstyler uses ceramic brushes infused with argan oil to make styling fast and effortless, with a brushing action that feels as silky smooth as your hair looks.

# Specifications

### Attachments

**22 mm ThermoBrush:** For easy curling

**Nozzle:** For a focused airflow

**38 mm ThermoBrush:** For smooth styles and waves

### Power

**Voltage:** 220-240V

**Wattage:** 800W

### Technical specifications

**Cord length:** 1.8 m

**Number of heat settings:** 3 heat with 2 speed

**Off mode power:** < 0.3 W

### Service

**2-year worldwide warranty**

### Ease of use

**Storage hook**

**Swivel cord**

### Caring technologies

**Caring temperature setting**

