

# PHILIPS

## EVNIA



QD OLED gaming  
monitor

4K UHD gaming  
monitor

Evnia 8000

31.5" (80cm)

3840 x 2160 (4K UHD)



32M2N8800

## Gaming beyond innovation

This monitor produces incredible visuals. Its QD OLED panel is matched with 4K UHD resolution and Display HDR TrueBlack 400 certification, which makes it an absolute powerhouse of visual quality, even at 240Hz.

### Features designed for gamers needs

- AI-enhanced Ambiglow: for intensified entertainment
- Evnia Precision Center: Maximize Your Gaming Experience
- Dynamic Lighting: Synchronize lighting on all devices.
- SmartImage game mode optimized for gamers
- VESA Certified ClearMR: for accurate blur testing
- Tilt, swivel and height-adjust for an ideal viewing position
- LowBlue mode and Flicker-free easy-on-the eyes viewing
- Smart Crosshair: for better aim and more fun

### Built for fast action

- Ultra-fast 240 Hz refresh rate for virtually lag-free gaming

### Immersive visuals

- Ultra Wide-Color wider range of colors for a vivid picture
- UltraClear 4K UHD (3840x2160) resolution for precision
- DisplayHDR™ TrueBlack 400 delivers incredible shadow details

# 4K UHD gaming monitor

QD OLED gaming monitor

32M2N8800/69

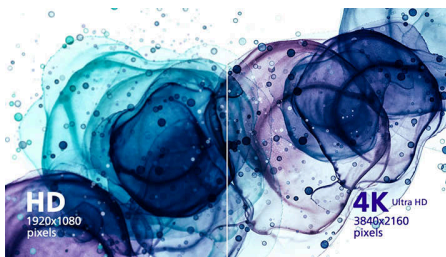
## Highlights

### Ultra-fast 240 Hz refresh rate



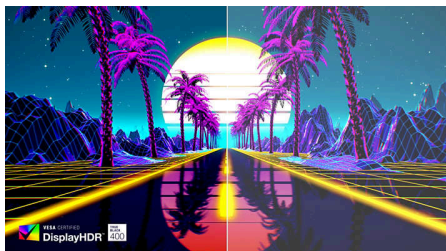
While playing the most intense engaging action-oriented games, ultra-fast 240 Hz refresh rate enhances an ultra-smooth, lag-free gaming experience. This Philips display redraws the screen image up-to 240 times per second, effectively faster than a standard display. Especially for fast-paced games like FPS and racing games, 240 Hz gives a superior motion and clarity visuals. With Philips 240 Hz display, action sequences in gameplay look judder-free and ghost-free. You will experience deeper immersion and feeling alive in game.

### UltraClear 4K UHD resolution



These Philips displays utilize high performance panels to deliver UltraClear, 4K UHD (3840 x 2160) resolution images. Whether you are demanding professional requiring extremely detailed images for CAD solutions, using 3D graphics applications or a financial wizard working on huge spreadsheets, Philips displays will make your images and graphics come alive.

### DisplayHDR™ True Black 400



This Philips monitor is certified with VESA DisplayHDR™ True Black 400. Delivering stunningly accurate shadow detail with deeper

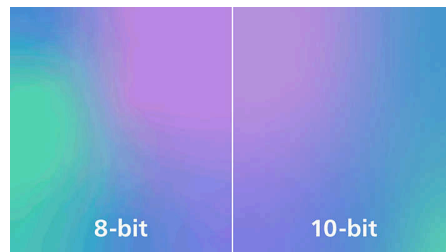
blacks for a remarkable visual experience compared with conventional monitors of the same peak luminance. This Philips monitor comes with several HDR modes, each optimized for your usage scenarios: HDR Game, HDR Movie, HDR Photo, and VESA DisplayHDR certified level.

### Ultra Wide-Color Technology



Ultra Wide-Color Technology delivers a wider spectrum of colors for a more brilliant picture. Ultra Wide-Color wider "color gamut" produces more natural-looking greens, vivid reds and deeper blues. Bring, media entertainment, images, and even productivity more alive and vivid colors from Ultra Wide-Color Technology.

### True 10-bit color depth



With this Philips true 10-bit color display, you can see color critical professional work of exceptional color accuracy and meeting professional standards. Compared with conventional 8-bit color display, this Philips monitor produces a more natural transition between hues for smoother gradients.

### QD OLED technology



QD-OLED represents a hybrid approach that marries the OLED panels and quantum dot technology. By combining what's best of both, QD-OLED guarantees high contrast, deep blacks, and unlimited viewing angles, with the higher peak brightness and more vibrant colors.

### LowBlue mode & Flicker-free



Our LowBlue Mode and Flicker-free technology have been developed to reduce eye strain and fatigue often caused by long hours in front of a monitor.

### AI-enhanced Ambiglow



Our AI-enhanced processor analyzes the incoming image content and continuously adapts the color and brightness of the emitted light to match the image. This feature adds a new dimension to your viewing experience. The innovative Ambiglow uses its AI capabilities to create a truly immersive and customizable gaming experience. From filling your gaming room with color to feeling like you are part of the game, the AI-enhanced Ambiglow is made to make your gaming experience the best it's ever been by combining intelligence, color, and light.



Ultra Wide Color



LowBlue Mode



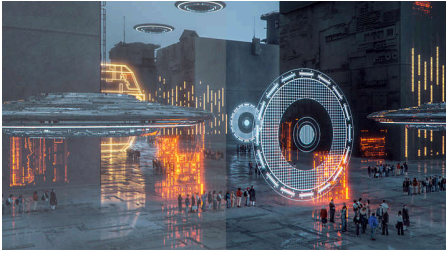
## 4K UHD gaming monitor

QD OLED gaming monitor

32M2N8800/69

# Highlights

### SmartImage Game mode



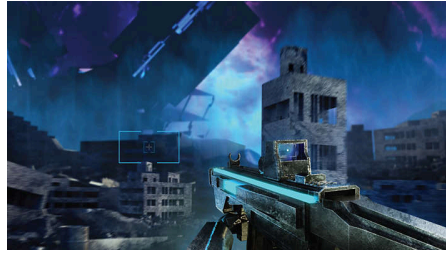
The new Philips gaming display has quick access OSD fine tuned for gamers, offering you multiple options. "FPS" mode (First person shooting) improves dark themes in games, allowing you to see hidden objects in dark areas. "Racing" mode adapts display with fastest response time, high color, along with image adjustments. "RTS" mode (Real time strategy) has a special SmartFrame mode which enables highlighting of specific area and allows for size and image adjustments. Gamer 1 and Gamer 2 enable you to save personal customized settings based on different games, ensuring best performance.

### Compact Ergo Base



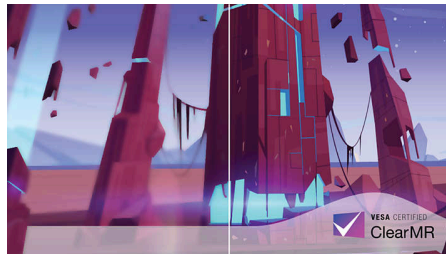
The Compact Ergo Base is a people-friendly Philips monitor base that tilts, swivels and height-adjusts so each user can position the monitor for maximum viewing comfort and efficiency.

### Smart Crosshair



Color of Crosshair is set by default. When Smart Crosshair is on, the color will change as complementary color to the background color. Smart Crosshair enhances the accuracy of aiming so you can spot the enemies more easily.

### VESA ClearMR 13000



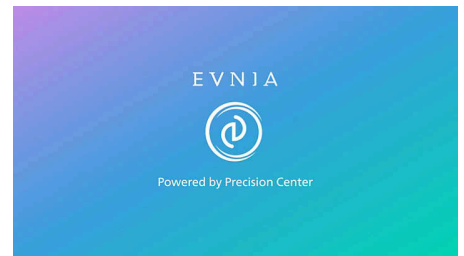
Previously, methods to test blur on screen were measured through MRPT. VESA Certified ClearMR acts as an alternative to MRPT and is designed to reflect the true nature of blur through digital high-speed camera testing. For monitors that are sent in and certified through VESA Certified ClearMR, you can rest assured that you will have an accurate assessment of the monitor's blur quality. Each certification is defined through a CMR range; with this monitor being ClearMR 13000 classified, it has one of the highest classifications of image quality, meaning less overall blur.

### Dynamic Lighting



This feature is a Microsoft certification program that enables with users Windows 11 to synchronize and manage the RGB lighting of all their monitors and peripherals from one menu. By doing this, the Dynamic Lighting feature creates a complete RGB lighting ecosystem with Philips Evnia Ambiglow across all devices that ultimately caters to a customizable user experience.

### Evnia Precision Center



Evnia Precision Center is an easy-to-use software designed to optimize and personalize your Evnia monitor. Whether you're a casual or competitive gamer, it offers a wide range of customization options to match your unique gaming style. With intuitive controls and seamless navigation, Evnia Precision Center gives you full control, providing everything you need to elevate your gaming to the next level—right at your fingertips.



Ultra Wide Color



LowBlue Mode



# 4K UHD gaming monitor

QD OLED gaming monitor

32M2N8800/69

## Specifications

### Picture/Display

**Panel Size:** 31.5 inch / 80 cm

**Aspect ratio:** 16:9

**Monitor Panel Type:** QD OLED

**Pixel pitch:** 0.1814 x 0.1814 mm

**Brightness:** SDR: 250 (APL 100%) nit, HDR: 450 (APL 10%) nit, HDR E/P: 1000 (APL 3%) nit

**Display colors:** Color support 1.07 billion colors (10 bit)

**Color gamut (typical):** NTSC 110.3%\*, sRGB 131.3%\*, Adobe RGB 93.6%\*

**Contrast ratio (typical):** 1,500,000:1

**SmartContrast:** Mega Infinity DCR

**Response time (typical):** 0.03 ms (Gray to Gray)\*

**Viewing angle:** 178° (H) / 178° (V), @ C/R > 10000

**Picture enhancement:** SmartImage game

**Maximum resolution:** HDMI: 3840 x 2160 @ 240 Hz

**Effective viewing area:** 699.48 (H) x 394.73 (V)

**Scanning Frequency:** 30 - 510 kHz (H) / 48 - 240 Hz (V)

sRGB

**Delta E:** <2 (sRGB)

**Flicker-free**

**Pixel Density:** 139.87 PPI

**LowBlue Mode**

**Display Screen Coating:** Anti-reflection, 2H

**Low Input Lag**

**EasyRead**

**Adaptive sync**

**HDR:** DisplayHDR True Black 400 certified

**Ambiglow:** 3-sided

**Pixel format:** RGB Q-Stripe\*

**Clear MR Tier:** 13000

**Smart Sniper**

**Stark Shadow Boost**

**Windows Dynamic Lighting**

**Smart Crosshair**

**Shadow Boost**

### Connectivity

**Signal Input:** HDMI 2.1 x 2, DisplayPort 1.4 x 1

**Sync Input:** Separate Sync

**Audio (In/Out):** Audio out

**HDCP:** HDCP 1.4 (HDMI / DisplayPort), HDCP 2.2 (HDMI / DisplayPort)

**USB Hub:** USB 3.2 Gen 1 / 5 Gbps, USB-B upstream x 1, USB-A downstream x 2 (with 1 for fast charge B.C 1.2)

### Convenience

**Built-in Speakers:** 5 W x 2

**Plug & Play Compatibility:** DDC/CI, Mac OS X, sRGB, Windows 11 / 10

**User convenience:** Power On/Off, Menu/OK, Input/Up, Game Settings/Down, SmartImage game/Back

**OSD Languages:** Brazil Portuguese, Czech, Dutch, English, Finnish, French, German, Greek, Hungarian, Italian, Japanese, Korean, Polish, Portuguese, Russian, Spanish, Simplified Chinese, Swedish, Turkish, Traditional Chinese, Ukrainian

**Other convenience:** Kensington lock, VESA mount (100x100mm), VESA bracket

**MultiView:** PIP/PBP mode, 2x devices

**Low blue light:** Low blue light compliance\*

### Stand

**Height adjustment:** 130 mm

**Swivel:** -/+ 30 degree

**Tilt:** -5/20 degree

### Power

**Power supply:** Internal, 100-240VAC, 50-60Hz

**Off mode:** 0.3 W (typ.)

**On mode:** 113.6 W (typ.)

**Standby mode:** 0.5 W (typ.)

**Power LED indicator:** Operation - White, Standby mode- White (blinking)

### Dimensions

**Packaging in mm (WxHxD):** 840 x 510 x 160 mm

**Product without stand (mm):** 717 x 419 x 92 mm

**Product with stand(max height):** 717 x 572 x 311 mm

### Weight

**Product with packaging (kg):** 13.58 kg

**Product with stand (kg):** 9.65 kg

**Product without stand (kg):** 8.18 kg

### Operating conditions

**Altitude:** Operation: +12,000ft (3,658m), Non-operation: +40,000ft (12,192m)

**Temperature range (operation):** 0°C to 40 °C

**MTBF:** 30,000 hour(s)

**Relative humidity:** 20%-80 %

**Temperature range (storage):** -20°C to 60 °C

### Sustainability

**Environmental and energy:** RoHS

**Recyclable packaging material:** 100 %

**Specific Substances:** Mercury free, PVC / BFR free housing

### Compliance and standards

**Regulatory Approvals:** CB, CE Mark, TUV/ISO9241-307, TUV-BAUART, EAC, EAEU RoHS, CEL, CCC, CECP, UKCA, EMF, FCC, ICES-003

### Cabinet

**Color:** White

**Finish:** Textured



\* Active pixels: 3840 (H) x 2160 (V). Number of total pixels: 3856 (H) x 2176 (V); extra 8 pixels on each side, space reserved for pixel orbiting.

\* Response time value equal to SmartResponse. The measurement pattern is 1 horizontal line.

\* For best output performance, please always ensure that your graphic card is capable of achieving the maximum resolution and refresh rate of this Philips display.

\* Adobe RGB and DCI-P3 Coverage based on CIE1976, sRGB Area based on CIE1931, NTSC Area based on CIE1976.

\* The ratio of display emission light in the range from 415 - 455 nm to the display emission of 400 - 500 nm shall be less than 50%.

\* The monitor may look different from feature images.

\* The products and accessories listed on this leaflet may differ by country and region.