

# PHILIPS

Interventional Applications  
Workspace

IntraSight Mobile

# Smart. Simple. Seamless.



Smart

IntraSight is an interventional platform protected by Windows 10, your best defense against cybersecurity threats.



Simple

Versatility from a touchscreen, modern and easy to maneuver mobile cart design.



Seamless

Full bedside procedural control with TSM in sterile field.

Uniting today's best-in-class imaging on a secure applications based platform ready for tomorrow's innovations.



# TSM tableside control

Philips allows you to run an entire case without breaking scrub. With our intuitive interface and new touch screen module (TSM), you get total control within the sterile field. Run an entire case tableside as you quickly navigate, annotate and measure to your exact specifications. All with the ease and responsiveness of using a tablet, even when wearing gloves and under a sterile drape.

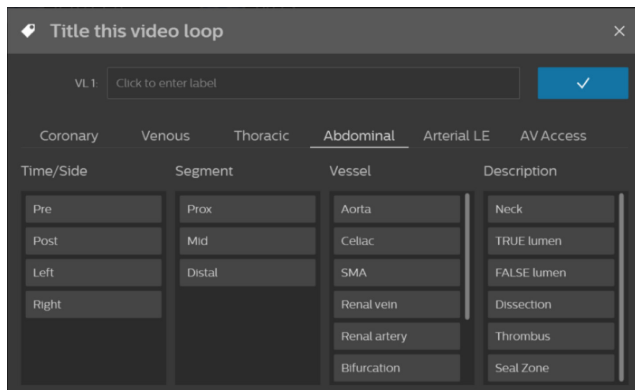


## Configuration

- Interventional applications platform
- Imaging (IVUS) license
- Includes ChromaFlo (IVUS)
- Touch Screen Module (TSM)
- Philips Remote Services
- Demonstration mode to facilitate training

## Series 3

- Available on Visions PV .014 and .018 and Reconnaissance IVUS catheters only
- Optional
- 
- 



## Simplified annotation by procedure type

Delivering an outstanding user experience with enhanced annotation capabilities specific to venous, arterial, AV access, thoracic and abdominal procedures.

Always read the label and follow the directions for use.  
Products subject to country availability. Please contact your local sales representative.

© 2024 Koninklijke Philips N.V. All rights reserved. Trade-marks are property of Koninklijke Philips N.V. or their respective owners.

Approved for external use. D2020121701A \* APR 2024

[www.philips.com/IGTdevices](http://www.philips.com/IGTdevices)



**Volcano Corporation**  
3721 Valley Centre Drive, suite 500  
San Diego, California, 92130  
USA

**Volcano Europe SA/NV**  
Excelsiorlaan 41  
B-1930 Zaventem  
Belgium

