

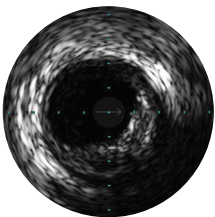
PHILIPS

Precision Guided
Therapy System

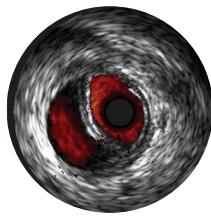
Core Mobile

IVUS and physiology on and ready at your fingertips

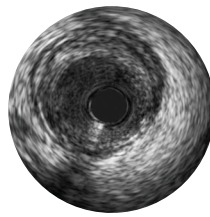
One system, many choices



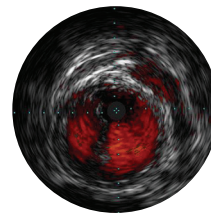
Digital IVUS
imaging



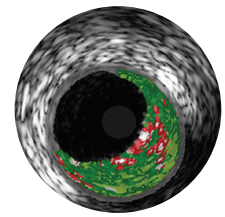
Peripheral
imaging



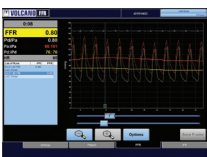
Rotational IVUS
imaging



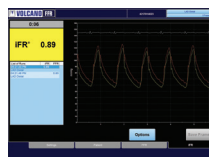
ChromaFlo
imaging



VH IVUS
imaging*



FFR modality



iFR modality



iFR Scout modality

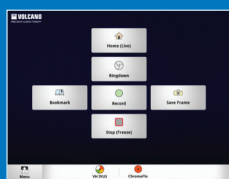
Streamlined workflow by importing and exporting patient data using DICOM Worklist. Document your results via DICOM Store, DVD or printout.

Core control pad

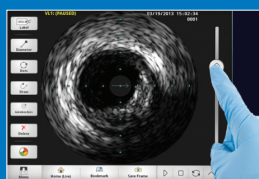
Easily controls both system and image from the sterile field for clarity in your approach, confidence in your decision, and convenience in your workflow.



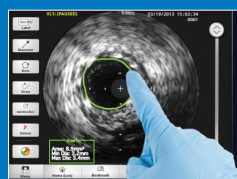
Workflow made easier from the sterile field



Record



Review



Measure



Label

FFR and iFR workflow also accessible.

Specifications

Power requirements	System input	100, 120V, 220, 240VAC, 50/60Hz, 1000VA
Dimensions	Core mobile	H=62", W=22", D=33"
	Control pad (optional)	H=2.75", W=10.5", D=8.3"
Processing and data storage	Processor	1 CPU processor 2.53 GHz, 8 core total, 1366 MHz BUS
	Memory	8 GB SD RAM
	Hard drive capacity	1TB 7200 RPM SATA
	Digital archiving options	Local, DVD, DICOM network
	Dicom services supported	DICOM worklist management, DICOM store
Ordering information	Core mobile 120V	COREmb120, 400-0100.01
	Control pad (optional)	CPADO1
	Bedrail mount	MNT01
	Monitor mount	MNT02

For more information please contact your local Philips IGT Devices representative or visit www.philips.com/IGTDevices

*The safety and effectiveness of VH IVUS for use in the characterization of vascular lesions and tissue types has not been established.

Always read the label and follow the directions for use.

Products subject to country availability. Please contact your local sales representative.

© 2024 Koninklijke Philips N.V. All rights reserved.
Trademarks are property of Koninklijke Philips N.V. or their respective owners.

Approved for external use. D000220358/B * APR 2024

www.philips.com/IGTdevices



Volcano Corporation
3721 Valley Centre Drive, suite 500
San Diego, California, 92130
USA

Volcano Europe SA/NV
Excelsiorlaan 41
B-1930 Zaventem
Belgium

