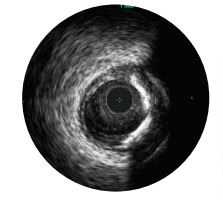
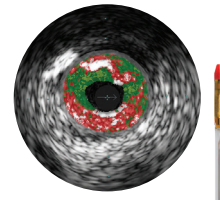
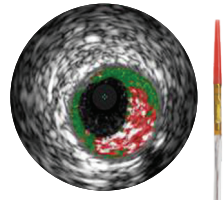


# Coronary IVUS catheters

## Features and specifications



### Eagle Eye Platinum

### Eagle Eye Platinum ST

### Refinity ST

Frequency/type	20 MHz digital 64 element	20 MHz digital 64 element	45 MHz rotational single element
Vessel	Coronary, peripheral	Coronary, peripheral	Coronary
Maximum imaging diameter	20 mm	20 mm	14 mm
Diameter at transducer	3.5F	3.5F	3.0F
Tip entry profile	0.019"	0.019"	0.025"
Tip-to-transducer length	10 mm	2.5 mm	20.5 mm
Radiopaque markers	Scanner + 3 marks 10 mm apart	Scanner + 3 marks 10 mm apart	One marker + transducer
Working length	150 cm	150 cm	135 cm
Wire lumen length	24 cm	24 cm	1.55 cm
Maximum guide wire	0.014"	0.014"	0.014"
Minimum guide catheter	5F (ID ≥ .056")	5F (ID ≥ .056")	5F (ID ≥ .056")
Minimum sheath size	5F	5F	N/A
Delivery platform	Rapid exchange	Rapid exchange	Rapid exchange
Proprietary imaging	VH IVUS, ChromaFlo	VH IVUS, ChromaFlo	N/A
Catalog number	85900P	85900PST	89900
Compatible with SyncVision	Yes	Yes	No

Eagle Eye Platinum and Eagle Eye Platinum ST are also indicated for peripheral applications.  
Safety and effectiveness of VH IVUS for use in the characterization of vascular lesions and tissue types has not been established.

Always read the label and follow the directions for use.  
Products subject to country availability. Please contact your local sales representative.

© 2024 Koninklijke Philips N.V. All rights reserved. Trademarks are property of Koninklijke Philips N.V. or their respective owners.

Approved for external use. D000232205/B \* APR 2024  
www.philips.com/IGTdevices

**Volcano Corporation**  
3721 Valley Centre Drive, suite 500  
San Diego, California, 92130  
USA

**Volcano Europe SA/NV**  
Excelsiorlaan 41  
B-1930 Zaventem  
Belgium

