



**PHILIPS**

RX Digital IVUS Catheter

Eagle Eye Platinum

# The trusted IVUS catheter

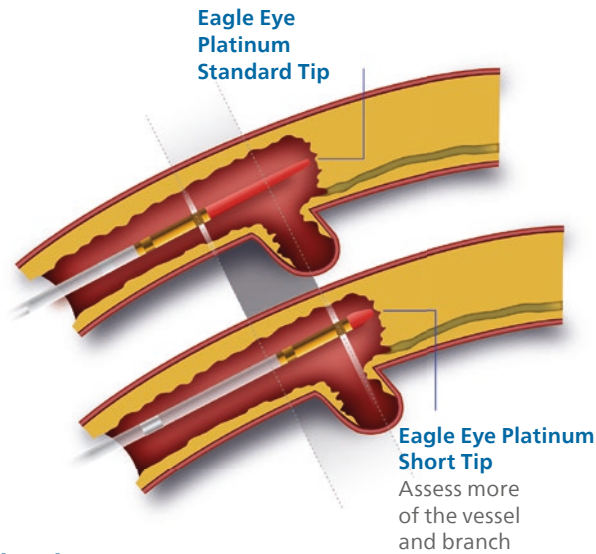
- now with a new glyDx  
hydrophilic coating

# Eagle Eye Platinum

## Digital IVUS catheter with a phased-array transducer

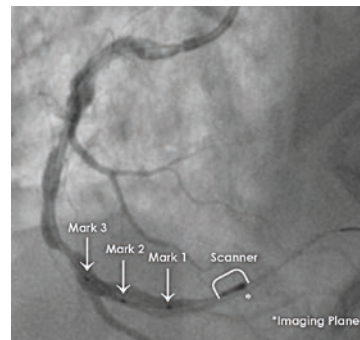
### Unmatched versatility:

- Two tip options to suit vessel anatomy and lesion characteristics.
- Coronary and peripheral indications.
- Fits through all 5F by guide catheters<sup>1</sup> - supports brachial and femoral access and it is radial access appropriate.
- Three imaging modalities on a single catheter (Grayscale, VH IVUS and ChromaFlo).



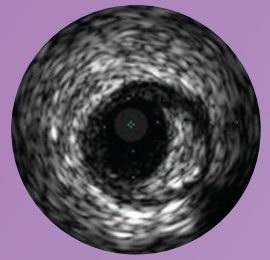
### Eagle Eye Platinum Standard Tip

- Digital IVUS catheter, with a **phased-array transducer**.
- **Exceptional deliverability** – glyDx hydrophilic coating with low entry profile.
- Radiopaque markers – **quick and convenient** length estimation with radiopaque markers.
- Fast, plug-and-play simplicity - **ease of use**.
- **Efficient workflow** by permanent imaging, even during positioning.

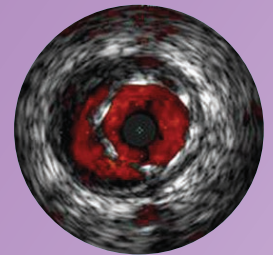


### Eagle Eye Platinum Short Tip

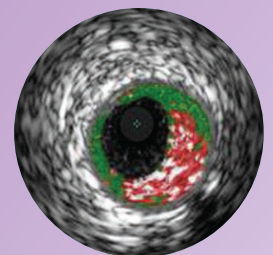
- In addition to the features of Eagle Eye Platinum Standard Tip (10mm), Eagle Eye Platinum Short Tip provides:
- **Shortest tip-to-transducer distance (2.5 mm)** which allows **closer visualization** to highly stenosed lesions, bifurcations and distal anatomy.
- Improved deliverability<sup>2</sup>.



Grayscale IVUS imaging



ChromaFlo imaging



VH IVUS imaging

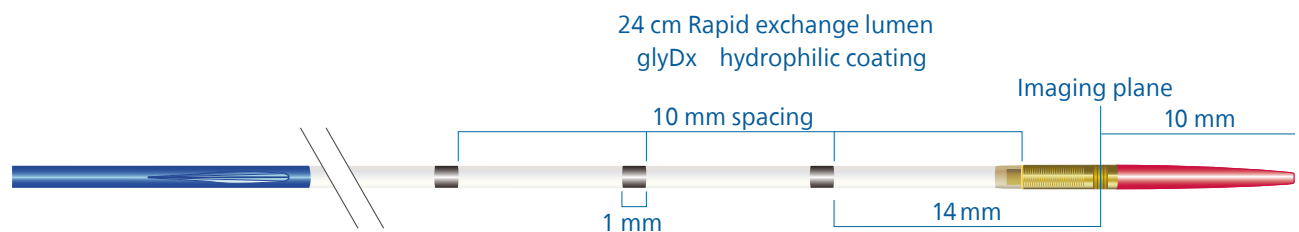
<sup>1</sup> Fits through guide catheters with inner diameters as low as 0.056". Data on file.

<sup>2</sup> Compared to the Eagle Eye gold catheter. Data on file.

# Technical specifications

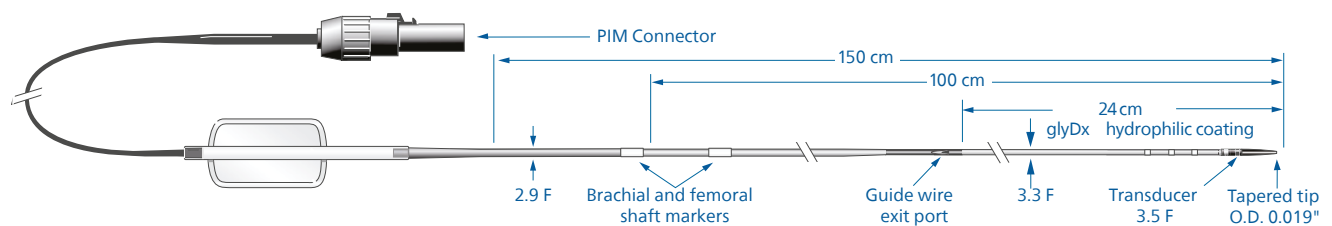
## Eagle Eye Platinum Standard Tip

Distal tip and radiopaque marker detail



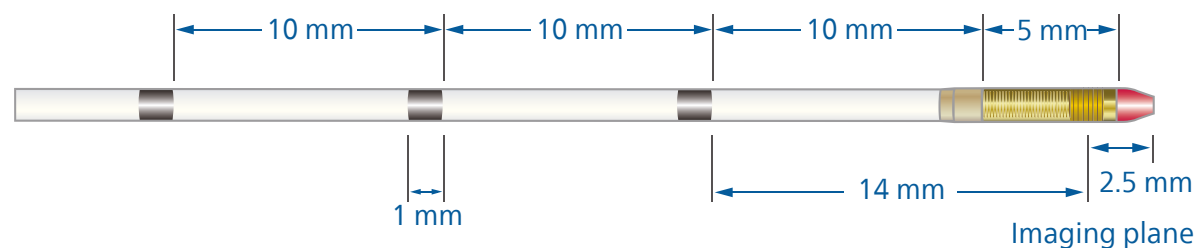
## Eagle Eye Platinum Standard Tip

RX digital IVUS catheter



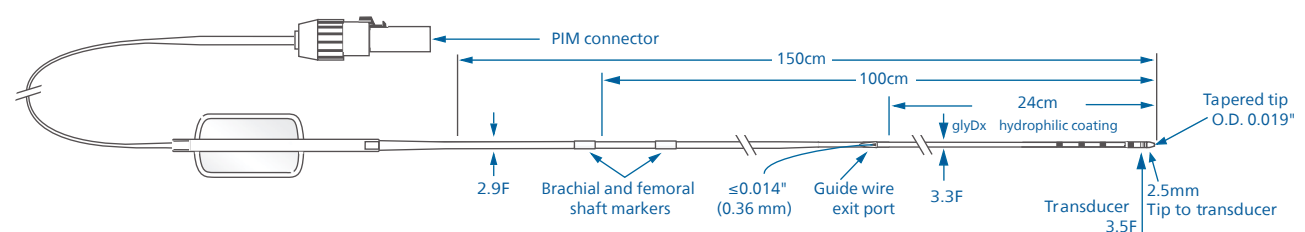
## Eagle Eye Platinum Short Tip

Distal tip and radiopaque marker detail



## Eagle Eye Platinum Short Tip

RX digital IVUS catheter





Always read the label and follow the directions for use.  
Products subject to country availability. Please contact your local sales representative.

© 2025 Koninklijke Philips N.V. All rights reserved.  
Trademarks are property of Koninklijke Philips N.V. or  
their respective owners.

Approved for external use. D000118512/B \* AUG 2025

[www.philips.com/IGTdevices](http://www.philips.com/IGTdevices)



**Philips Image Guided Therapy Corporation**  
9965 Federal Drive  
Colorado Springs, CO 80921 USA

**Philips Medical Systems Nederland B.V.**  
Veenpluis 6  
5684 PC Best  
The Netherlands

