



PHILIPS

Short Tip Rotational
IVUS Catheter

Refinity

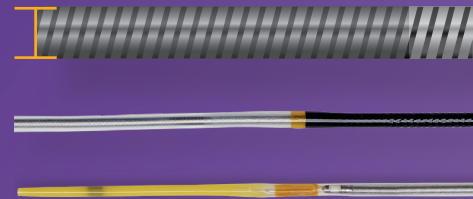
Designed to meet
the needs of your most
complex PCI procedures

With exceptional deliverability, 5F guide compatibility and 45 MHz high resolution image, Refinity ST¹ is designed to meet the needs of your most complex PCI cases.

Exceptional deliverability

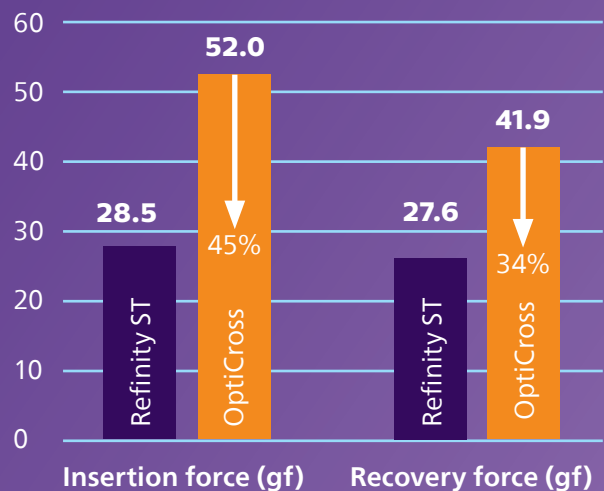
- Large 0.026 inch Asahi Intecc drive cable for enhanced pushability
- Smooth proximal to midshaft transition
- GlyDx hydrophilic coating for enhanced pushability and trackability
- Soft and flexible tip facilitates distal access

0.026"



Improved deliverability,² crossing challenging lesions with ease

Refinity insertion and recovery forces are significantly lower ($p < 0.0001$) than OptiCross²



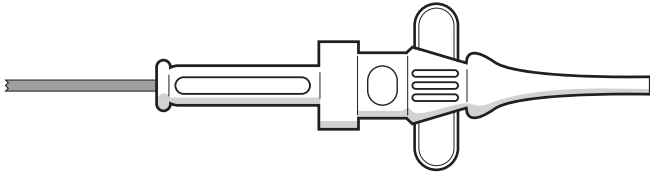
¹ This product is not available in all markets.

² Data on file at Philips: 209-0303 23_LB. Bench testing was conducted with three rotational IVUS catheters: Refinity, Revolution, OptiCross through a tortuous model.

Low profile, 5F guide compatibility

	Refinity	Revolution	OptiCross*
Imaging window profile	3.0 F	3.2 F	3.15 F
Distal shaft profile	3.0 F	3.2 F	3.15 F
Proximal shaft profile	3.0 F	3.5 F	3.15 F
Tip entry profile	0.025"	0.022"	0.026"
Maximum guide catheter sheath size	5F (ID \geq 0.056")	6F (ID \geq 0.064")	5F (ID \geq 0.058")

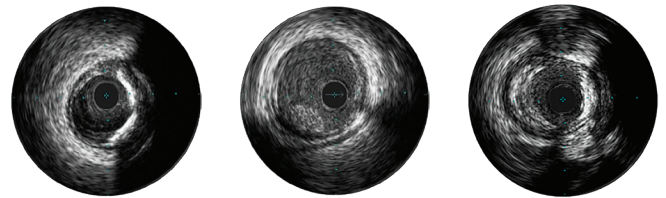
* Source: <http://www.bostonscientific.com/en-EU/products/imaging-systems/opticross-coronary-imaging-catheter.html>



Refinity fits through all 5F guide catheters and is radial access appropriate

45MHz high resolution image

- Clear, crisp images for accurate coronary vessel interpretation and assessment
- Helps assess lesion anatomy for accurate stent sizing and placement
- Hi-Q imaging allows you to customize your image to better identify lumen features



Multi-modality choice

Philips Image Guided Therapy's choice platform provides customers with a wide range of solutions for multiple preferences and procedure types:

- Digital IVUS
- Rotational IVUS
- Peripheral IVUS
- FFR pressure wires
- iFR modality
- Advanced software and interfaces
- Multiple system solutions

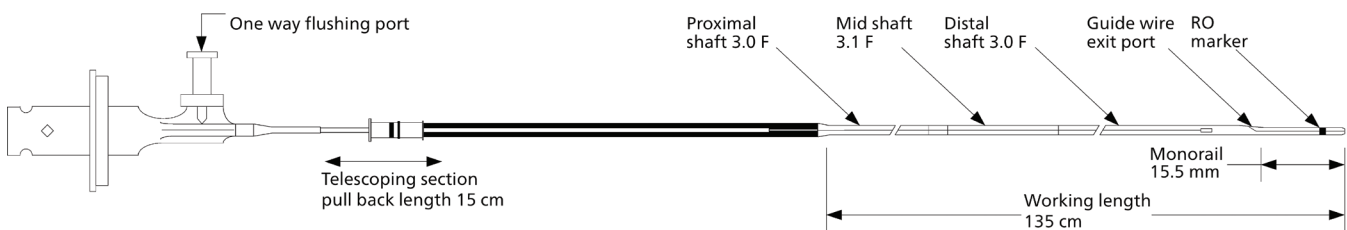


Compatible with the SpinVision automatic pullback device



- Long 15 cm, smooth automatic pullbacks facilitate accurate vessel and lesion measurements
- LED display provides pullback position information with accuracy to 0.1 mm
- Maximum pullback accuracy facilitates clinical research and trials
- Manual pullback option gives more control where needed

Technical specifications



Dimensional attribute	Specification
Imaging core pullback length	15 cm
Catheter working length	135 cm
Proximal shaft profile	3.0F (0.39")
Guide wire compatibility	0.014"
Guide catheter compatibility	5F (ID ≥ .056")
Imaging window profile	3.0F (.39")
Monorail length	15.5 mm
Transducer to tip length	20.5 mm
RO marker to tip length	5 mm

Ordering information	
89900	Refinity short-tip catheter
891 SV	SpinVision option
891 BG	SpinVision sterile drapes (order by each)

Always read the label and follow the directions for use.
Products subject to country availability. Please contact your local sales representative.

© 2024 Koninklijke Philips N.V. All rights reserved.
Trademarks are property of Koninklijke Philips N.V. or their respective owners.

Approved for external use. D000232207/C * APR 2024
www.philips.com/IGTdevices



Volcano Corporation
3721 Valley Centre Drive, suite 500
San Diego, California, 92130
USA

Volcano Europe SA/NV
Excelsiorlaan 41
B-1930 Zaventem
Belgium

