

PHILIPS

Full HD gaming
monitor

Fast IPS Gaming
monitor

Evnia 3000

27" (68.5 cm)

1920 x 1080 (Full HD)

27M2N3200S



Broaden your gaming horizon

This monitor allows you to game with ultimate precision and speed at 180Hz. With sharp HDR quality imagery and Full HD resolution guaranteed, this monitor produces an excellent all-around gaming experience.

Features designed for gamers needs

- LowBlue mode and Flicker-free easy-on-the eyes viewing
- SmartImage game mode optimized for gamers
- Built-in stereo speakers for multimedia
- EasySelect menu toggle key for quick on-screen menu access
- Smart Crosshair: for better aim and more fun

Built for fast action

- 180Hz refresh rates for ultra-smooth, brilliant images
- Low input lag reduces time delay between devices to monitor
- 0.5 ms ultra-fast speed for crisp image and smooth gameplay
- Fast IPS Panel: For rapid and crystal-clear gaming

Immersive visuals

- 16:9 Full HD display for crisp detailed images
- High Dynamic Range (HDR) for more lifelike colorful visuals
- SmartContrast for rich black details

Fast IPS Gaming monitor

Full HD gaming monitor

27M2N3200S/69

Highlights

180Hz Gaming



You play intense, competitive gaming. You demand display with lag free, ultra-smooth images. This display redraws the screen image up-to 180 times per second, effectively faster than a standard display. A lower frame rate can make enemies appear to jump from spot to spot on the screen, making them difficult targets to hit. With 180Hz frame rate, you get those critical missing images on the screen which shows enemy movement in ultra-smooth motion so you can easily target them. With ultra-low input lag and no screen tearing, this Philips display is your perfect gaming partner.

0.5 ms Smart MBR fast response



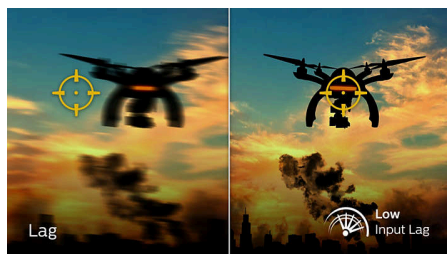
Philips Evnia with 0.5 ms Smart MBR effectively eliminates smearing and motion blur, delivers sharper and precise visuals to enhance gaming experience. Fast-moving action and dramatic transitions will be rendered smoothly. Best choice for playing thrilling and twitch-sensitive games.

Fast IPS



This feature is made for action-packed gameplay. Not only does it produce virtually blur-free gaming, but it also pairs well with high frame rates for the best and sharpest imagery, guaranteed.

Low Input Lag



Input lag is the amount of time that elapses between performing an action with connected devices and seeing the result on screen. Low input lag reduces the time delay between entering a command from your devices to monitor, greatly improve on playing twitch-sensitive video games, particularly important to whom plays fast-paced, competitive games.

16:9 Full HD display



Picture quality matters. Regular displays deliver quality, but you expect more. This display features enhanced Full HD 1920 x 1080

resolution. With Full HD for crisp detail paired with high brightness, incredible contrast and realistic colors expect a true to life picture.

High Dynamic Range (HDR)



High Dynamic Range delivers a dramatically different visual experience. With astonishing brightness, incomparable contrast and captivating color, images come to life with much greater brightness while also featuring much deeper, more nuanced darks. It renders a fuller palette of rich new colors never before seen on display, giving you a visual experience that engages your senses and inspires emotions.

SmartContrast



SmartContrast is a Philips technology that analyzes the contents you are displaying, automatically adjusting colors and controlling backlight intensity to dynamically enhance contrast for the best digital images and videos or when playing games where dark hues are displayed. When Economy mode is selected, contrast is adjusted and backlighting fine-tuned for just-right display of everyday office applications and lower power consumption.



Fast IPS Gaming monitor

Full HD gaming monitor

27M2N3200S/69

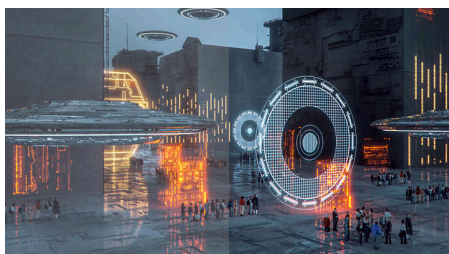
Highlights

LowBlue Mode & Flicker-free



Our LowBlue Mode and Flicker-free technology have been developed to reduce eye strain and fatigue often caused by long hours in front of a monitor.

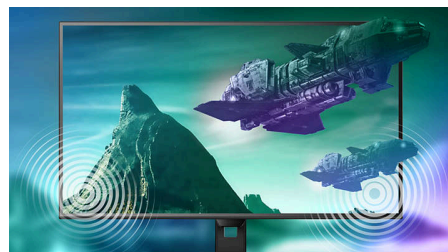
SmartImage Game mode



The new Philips gaming display has quick access OSD fine tuned for gamers, offering you multiple options. "FPS" mode (First person shooting) improves dark themes in games, allowing you to see hidden objects in dark areas. "Racing" mode adapts display with fastest response time, high

color, along with image adjustments. "RTS" mode (Real time strategy) has a special SmartFrame mode which enables highlighting of specific area and allows for size and image adjustments. Gamer 1 and Gamer 2 enable you to save personal customized settings based on different games, ensuring best performance.

Built-in stereo speakers



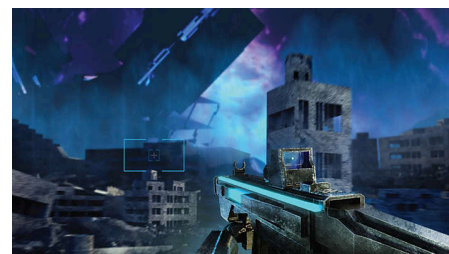
A pair of high quality stereo speakers built into a display device. It can be visible front firing, or invisible down firing, top firing, rear firing, etc depending on model and design.

EasySelect Menu Toggle Key



The discreetly placed EasySelect Menu Toggle Key allows you to make quick and easy adjustments to monitor settings in the On-Screen Display menu.

Smart Crosshair



Color of Crosshair is set by default. When Smart Crosshair is on, the color will change as complementary color to the background color. Smart Crosshair enhances the accuracy of aiming so you can spot the enemies more easily.



Fast IPS Gaming monitor

Full HD gaming monitor

27M2N3200S/69

Specifications

Picture/Display

Panel Size: 27 inch / 68.5 cm
Aspect ratio: 16:9
LCD panel type: IPS technology
Backlight type: W-LED system
Pixel pitch: 0.31125 x 0.31125mm
Brightness: 300 cd/m²
Display colors: 16.7 M (8 bits)
Color gamut (typical): DCI-P3:95%*, sRGB 128%*, AdobeRGB 90%*
Contrast ratio (typical): 1000:1
SmartContrast: Mega Infinity DCR
Response time (typical): 1 ms (Gray to Gray)*
Viewing angle: 178° (H) / 178° (V), @ C/R > 10
Picture enhancement: SmartImage game
Maximum resolution: 1920x1080 @ 180 Hz
Effective viewing area: 597.6(H)x336.15(V)mm
Scanning Frequency: 30k - 200 kHz (H) / 48 - 180 Hz (V)
sRGB
Flicker-free
Pixel Density: 81.59 PPI
LowBlue Mode
Display Screen Coating: Anti-Glare, 3H, Haze 25%
EasyRead
HDR: HDR 10 supported
Smart Crosshair
Shadow Boost: Yed
Smart MBR: 0.5ms*

Connectivity

Signal Input: HDMI 2.0 x 2, DisplayPort 1.4 x 1
Sync Input: Separate Sync
Audio (In/Out): Audio out
HDCP: HDCP 1.4 (HDMI / DP), HDCP 2.2 (HDMI / DP)

Convenience

Built-in Speakers: 2W x 2
Plug & Play Compatibility: DDC/CI, Mac OS X, sRGB, Windows 11 / 10
User convenience: Power On/Off, Menu/OK, Input/Up, Game Settings/Down, SmartImage game/Back
OSD Languages: Brazil Portuguese, Czech, Dutch, English, Finnish, French, German, Greek, Hungarian, Italian, Japanese, Korean, Polish, Portuguese, Russian, Spanish, Simplified Chinese, Swedish, Turkish, Traditional Chinese, Ukrainian
Other convenience: Kensington lock, VESA mount (100x100mm), LowBlue Mode

Stand

Tilt: -5/20 degree

Power

Power supply: Internal, 100-240VAC, 50-60Hz
Off mode: 0.3 W (typ.)
On mode: 27.4 W (typ.)
Standby mode: 0.5 W (typ.)
Power LED indicator: Operation - White, Standby mode- White (blinking)

Dimensions

Packaging in mm (WxHxD): 690 x 420 x 141 mm
Product without stand (mm): 615 x 369 x 61 mm
Product with stand(max height): 615 x 463 x 196 mm

Weight

Product with packaging (kg): 7.25 kg
Product with stand (kg): 4.71 kg
Product without stand (kg): 4.10 kg

Operating conditions

Altitude: Operation: +12,000ft (3,658m), Non-operation: +40,000ft (12,192m)
Temperature range (operation): 0°C to 40 °C
MTBF: 50,000 (Excluded backlight) hour(s)
Relative humidity: 20%-80 %
Temperature range (storage): -20°C to 60 °C

Sustainability

Environmental and energy: RoHS
Recyclable packaging material: 100 %
Specific Substances: Mercury free, PVC / BFR free housing
Post consumer recycled plastics: 85%*

Compliance and standards

Regulatory Approvals: CB, TUV/ISO9241-307, TUV-BAUART, EAC, EAEU RoHS, MEPS, KC, BSMI, CE Mark, UKCA, EMF, FCC, ICES-003

Cabinet

Color: Charcoal
Finish: Textured



* The maximum resolution works for either HDMI input or DP input.

* For best output performance, please always ensure that your graphic card is capable of achieving the maximum resolution and refresh rate of this Philips display.

* Response time value equal to SmartResponse

* Smart MBR is to adjust brightness for blur reduction, so cannot adjust brightness while Smart MBR is turned on. To reduce motion blur, LED backlight will strobe synchronously with screen refresh, which may cause noticeable brightness change.

* Smart MBR is gaming-optimized mode. Turn on Smart MBR may cause noticeable screen flickering. It is recommended to turn off when you are not using the gaming function.

* sRGB Area based on CIE1931

* Adobe RGB and DCI-P Coverage based on CIE1976

* This monitor strives for sustainability: the stand's feet are made with 35% recycled plastic and monitor's chassis is made up of 85% post-consumer recycled plastic.

* The monitor may look different from feature images.