

PHILIPS

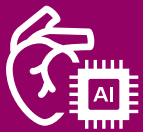
Ultrasound

EPIQ CVx upgrade

Step up to the next dimension in echocardiography

No matter which Philips cardiovascular ultrasound system you currently rely upon, now is the time to upgrade to the latest. The Philips innovative cardiovascular ultrasound platform, built with powerful AI-based capabilities, helps you transcend today's complexities and propels echocardiography into the next dimension. This is all on one uniquely modular, familiar and industry-leading platform¹ that gives you the ease you know and the legacy you trust.

Transcend today's limitations



Transcend unnecessary variability with **AI-enabled consistency**



Transcend clinical complexity with **advanced innovation**



Transcend tedious tasks with **efficient automation**



Transcend system challenges with **flexible scalability**

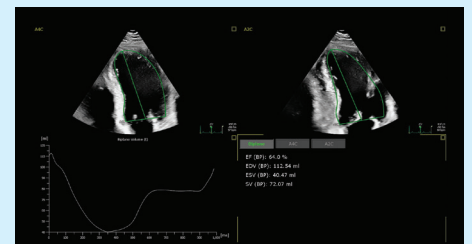
Access powerful capabilities

Our platform offers powerful tools and AI-based technology²⁻⁶ that help you manage clinical complexities to advance care for more patients in more ways.



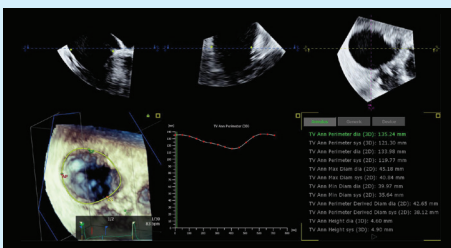
New X11-4t mini TEE transducer^{7*}

It fits right, allowing you to increase access to 3D TEE, expanding your scanning of pediatric and adult patients.



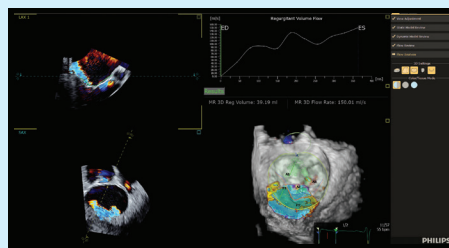
AutoStrain LV now features 2D automated EF and mid-layer strain

Advances to AutoStrain feature fast, reproducible results as part of a comprehensive LV assessment within the same application, improving workflow and saving time.



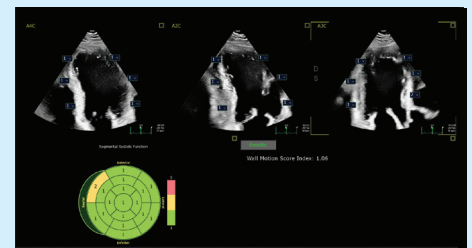
3D Auto Tricuspid Valve Quantification^{**}

AI helps confirm/re-evaluate device size/selection with more accurate peri-procedure TV annulus measurements (initial sizing and plan with CT).



3D Auto Color Flow Quantification^{**}

Offers AI for fast, easy and reproducible mitral regurgitation (MR) volume to help assess MR severity.



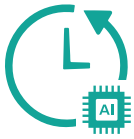
Auto Segmental Wall Motion Scoring^{**}

Provides automated evaluation of wall motion in a standard 17-segment bulls-eye display to aid objective LV wall assessment.

^{*}Not available on Ultrasound Workspace; awaiting 510(k) clearance. Clinical performance and safety have not been established for some features which have 510(k) pending. Not available for sale in the USA. ^{**} Clinical performance and safety have not been established for some features which have 510(k) pending. Not available for sale in the USA.

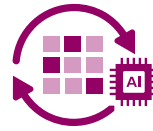
Advanced capabilities for workflow efficiency

Gain greater clinical confidence in everyday and complex cases, supporting more efficient procedures and fewer manual steps through AI-driven features and automation of repetitive, mundane tasks.²⁻⁶



Smart (Doppler) View ID

Further enhance time-savings through the use of AI when performing cardiac Doppler measurements.



Smart View Select

Uses AI to automatically select the optimum images for 2D LV assessment.



VeriSight Pro 3D ICE^{8*} image enhancement

Improved 3D color supports excellence in interventional procedures.



Recall Settings

Improve workflow with TEE, ICE and TTE transducers, preserving acquisition and imaging settings when switching transducers during an exam.

Optimize TTE imaging

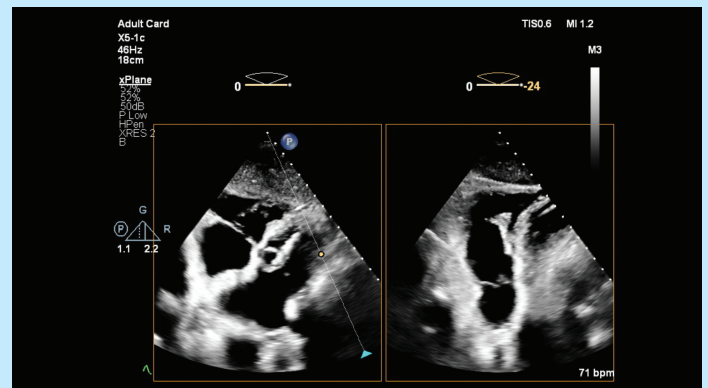
The X5-1c transducer, now enhanced with nSight Plus, helps optimize TTE imaging.

Visualize more in TEE

The X8-2t transducer is now enhanced with nSight Plus to improve MPR IQ and better visualize flow dynamics.

See greater resolution in fetal echo

Pair this newly enhanced C5-1 transducer with Flow Viewer for advanced visualization of blood flow.



X5-1c transducer subcostal xPlane image of pulmonary artery

*Not available on Ultrasound Workspace; awaiting 510(k) clearance.



Collaboration Live with multi-party enables real-time access to remote expertise, directly from the ultrasound system*



Remote software management helps keep your capabilities and security current

* Contract required. Requires release 7.0.5 or higher. Diagnostic use and remote access via mobile device or browser requires release 9.0 or higher. Multi-party and system-to-system connect require release 10.0 or higher.

1. Ultrasound Equipment World Market Report - 2023 Edition. Signify Research.
2. The Auto Measure feature can reduce the quantification time by 51%. Release 9.0 claims document 270472 A.
3. HeartModel study (4522 991 17141 * MAY 2016) by Dr. Roberto Lang: Automated transthoracic three-dimensional echocardiographic quantification of the left heart chambers
4. The AutoStrain application utilizes two automation technologies: Auto View Recognition and Auto Contour Placement. While the implementation of these automation tools drives simple, fast workflow for robust and reproducible GLS measurements, the user retains the ability to edit and override the automation to facilitate good clinical practice. AutoStrain-automated global longitudinal strain (GLS) measurement, Verena Roediger, PhD. PM, TOMTEC/Philips White Paper. Printed in The Netherlands. 4522 991 45791 * FEB 2019.
5. After performing 10 echo exams with the Compact 5500 system, there was 80% agreement that the AutoStrain LV application was fast and easy to use. 275264C_Compact 5000 Series Claims List for Marketing Communications and 277399 Compact 5000 Series User Preference
6. Reduce your 2D diagnostic echo exam time by 20% by incorporating Philips automated solutions into your everyday echo. 270472_release 9.0 Claims Evidence Report
7. X11-4t mini 3D TEE is the commercial name for Transducer 11-4 MHz TEE with xMatrix Array and PureWave technology.
8. VeriSight Pro 3D ICE is not available for sale in all markets.

Talk with your Philips representative about what this innovative platform can do for you | www.philips.com/EPIQCVx

© 2024 Koninklijke Philips N.V. All rights are reserved. Philips reserves the right to make changes in specifications and/or to discontinue any product at any time without notice or obligation and will not be liable for any consequences resulting from the use of this publication.



www.philips.com
Printed in the Netherlands.

4522 991 86251 * MAY 2024