

# PHILIPS

Quad HD gaming  
monitor

Gaming Monitor

Evnia 5000

27" (68.5 cm)

2560 x 1440 (QHD)

27M2N5510P



## Your gaming experience to the utmost

This monitor allows you to game up to 240Hz and is built to provide gamers the ultimate gaming experience. Not to mention, the 0.5 MPRT and Display HDR 400 qualification gives gamers crisp and clear visuals at any frame rate.

### Features designed for gamers needs

- LowBlue Mode for easy on-the-eyes productivity
- SmartImage game mode optimized for gamers
- EasySelect menu toggle key for quick on-screen menu access
- New OSD features for much more engaging gaming experience
- SmartErgoBase enables people-friendly ergonomic adjustments

### Built for fast action

- Low input lag reduces time delay between devices to monitor
- Ultra-fast 240 Hz refresh rate for virtually lag-free gaming
- 0.5 ms ultra-fast speed for crisp image and smooth gameplay

### Immersive visuals

- IPS LED wide view technology for image and color accuracy
- Crystalclear images with Quad HD 2560 x 1440 pixels
- 1.07 billion colors for stunning color and finest gradations
- DisplayHDR 400 for more lifelike and outstanding visuals

# Gaming Monitor

Quad HD gaming monitor

27M2N5510P/69

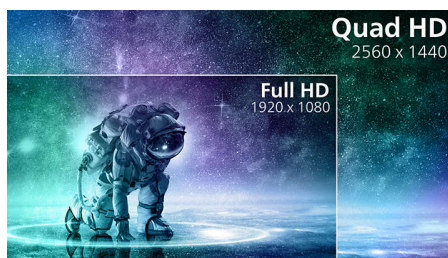
## Highlights

### IPS technology



IPS displays use an advanced technology which gives you extra wide viewing angles of 178/178 degree, making it possible to view the display from almost any angle. Unlike standard TN panels, IPS displays gives you remarkably crisp images with vivid colors, making it ideal not only for Photos, movies and web browsing, but also for professional applications which demand color accuracy and consistent brightness at all times.

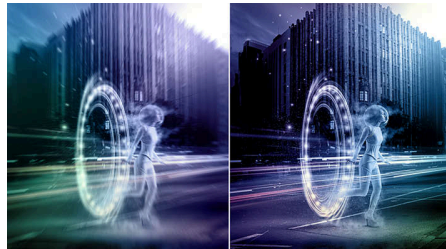
### Crystalclear images



These Philips screens deliver Crystalclear, Quad HD 2560x1440 or 2560x1080 pixel images. Utilizing high performance panels with high density pixel count, enabled by high bandwidth sources, these new displays will make your images and graphics come alive. Whether you

are demanding professional requiring extremely detailed information for CAD-CAM solutions, using 3D graphic applications or a financial wizard working on huge spreadsheets, Philips displays will give you Crystalclear images.

### 0.5 ms MPRT response



Philips display with 0.5 ms MPRT effectively eliminates smearing and motion blur, delivers sharper and precise visuals to enhance gaming experience. Fast-moving action and dramatic transitions will be rendered smoothly. Best choice for playing thrilling and twitch-sensitive games.

### Ultra-fast 240 Hz refresh rate



While playing the most intense engaging action-oriented games, ultra-fast 240 Hz refresh rate enhances an ultra-smooth, lag-free gaming

experience. This Philips display redraws the screen image up-to 240 times per second, effectively faster than a standard display. Especially for fast-paced games like FPS and racing games, 240 Hz gives a superior motion and clarity visuals. With Philips 240 Hz display, action sequences in gameplay look judder-free and ghost-free. You will experience deeper immersion and feeling alive in game.

### DisplayHDR 400



VESA-certified DisplayHDR 400 delivers a significant step-up from normal SDR displays. Unlike, other 'HDR compatible' screens, true DisplayHDR 400 produces astonishing brightness, contrast and colors. With global dimming and minimum 400 nits brightness, images come to life with notable highlights while featuring deeper, more nuanced blacks. It renders a fuller palette of rich new colors, delivering a visual experience that engages your senses.



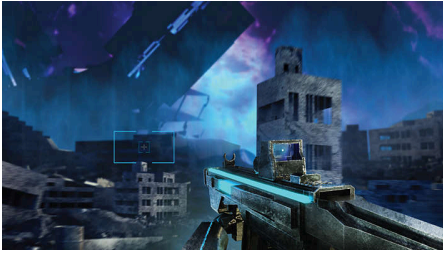
# Gaming Monitor

Quad HD gaming monitor

27M2N5510P/69

## Highlights

### New features for better gaming



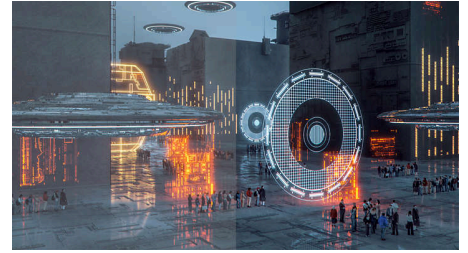
Philips Evnia is equipped with new features in OSD (on-screen display). Smart MBR Sync enables a great pair of MPRT together with Adaptive-sync, eliminating motion blur and ghosting while guaranteeing sharp and speedy gaming visuals with high frame rates. Smart ShadowBoost enhances dark scenes, allowing more details without overexposure. Smart Crosshair lets you never miss a single target.

### SmartErgoBase



The SmartErgoBase is a monitor base that delivers ergonomic display comfort and provides cable management. The base can swivel, tilt and rotate to various angles to ensure maximum comfort. The height adjustable stand guarantees the optimal viewing level, reducing the physical strains of a long workday, while cable management reduces cable clutter and keeps the workspace neat and professional.

### SmartImage Game mode



The new Philips gaming display has quick access OSD fine tuned for gamers, offering you multiple options. "FPS" mode (First person shooting) improves dark themes in games, allowing you to see hidden objects in dark areas. "Racing" mode adapts display with fastest response time, high color, along with image adjustments. "RTS" mode (Real time strategy) has a special SmartFrame mode which enables highlighting of specific area and allows for size and image adjustments. Gamer 1 and Gamer 2 enable you to save personal customized settings based on different games, ensuring best performance.



## Specifications

### Picture/Display

**Panel Size:** 27 inch / 68.5 cm  
**Aspect ratio:** 16:9  
**LCD panel type:** IPS technology  
**Backlight type:** W-LED system  
**Pixel pitch:** 0.2331 x 0.2331 mm  
**Brightness:** 400 cd/m<sup>2</sup>  
**Display colors:** 1.07B (8-bits+FRC)\*  
**Color gamut (typical):** DCI-P3:95.59%, sRGB: 121.63%, NTSC 103.10%, Adobe RGB 101.33%\*  
**Contrast ratio (typical):** 1000:1  
**SmartContrast:** Mega Infinity DCR  
**Response time (typical):** 1 ms (Gray to Gray)\*  
**Viewing angle:** 178° (H) / 178° (V), @ C/R > 10  
**Picture enhancement:** SmartImage game  
**Maximum resolution:** 2560 x 1440 @ 144 Hz (HDMI); 2560 x 1440 @ 240 Hz\* (DP)  
**Effective viewing area:** 596.736 (H) x 335.664 (V)  
**Scanning Frequency:** HDMI: 30 - 230 kHz (H) / 48 - 144 Hz (V); DP: 30 - 360 kHz (H) / 48 - 240 Hz (V)  
**sRGB**  
**Delta E:** < 2 (sRGB)  
**Flicker-free**  
**Pixel Density:** 108.79 PPI  
**LowBlue Mode**  
**Display Screen Coating:** Anti-Glare, 3H, Haze 25%  
**MPRT:** 0.5 ms  
**Low Input Lag**  
**EasyRead**  
**Adaptive sync**  
**HDR:** DisplayHDR 400 certified

### Connectivity

**Signal Input:** HDMI 2.0 x 2, DisplayPort 1.4 x 1  
**Sync Input:** Separate Sync  
**Audio (In/Out):** Audio out  
**HDCP:** HDCP 1.4 (HDMI / DP), HDCP 2.2 (HDMI / DP)

### Convenience

**Plug & Play Compatibility:** DDC/CI, Mac OS X, sRGB, Windows 11 / 10 / 8.1 / 8 / 7  
**User convenience:** Power On/Off, Menu/OK, Input/Up, Game Settings/Down, SmartImage game/Back  
**OSD Languages:** Brazil Portuguese, Czech, Dutch, English, Finnish, French, German, Greek, Hungarian, Italian, Japanese, Korean, Polish, Portuguese, Russian, Spanish, Simplified Chinese,

Swedish, Turkish, Traditional Chinese, Ukrainian  
**Other convenience:** Kensington lock, VESA mount (100x100mm), Halolight, LowBlue Mode

### Stand

**Height adjustment:** 130 mm  
**Pivot:** -/+ 90 degree  
**Swivel:** -/+ 30 degree  
**Tilt:** -5/20 degree

### Power

**Power supply:** 100-240VAC, 50-60Hz, Internal  
**Off mode:** 0.3 W (typ.)  
**On mode:** 23.5 W (typ.)  
**Standby mode:** 0.5 W (typ.)  
**Power LED indicator:** Operation - White, Standby mode- White (blinking)

### Dimensions

**Packaging in mm (WxHxD):** 731 x 467 x 191 mm  
**Product without stand (mm):** 613 x 367 x 52 mm  
**Product with stand(max height):** 613 x 518 x 247 mm

### Weight

**Product with packaging (kg):** 8.75 kg  
**Product with stand (kg):** 5.63 kg  
**Product without stand (kg):** 4.22 kg

### Operating conditions

**Altitude:** Operation: +12,000ft (3,658m), Non-operation: +40,000ft (12,192m)  
**Temperature range (operation):** 0°C to 40 °C  
**MTBF:** 50,000 (Excluded backlight) hour(s)  
**Relative humidity:** 20%-80 %  
**Temperature range (storage):** -20°C to 60 °C

### Sustainability

**Environmental and energy:** RoHS  
**Recyclable packaging material:** 100 %  
**Specific Substances:** Mercury free, PVC / BFR free housing

### Compliance and standards

**Regulatory Approvals:** CECP, CEL, CCC

### Cabinet

**Color:** Dark Slate  
**Finish:** Textured

### Design

Designed in Amsterdam, NL



\* "IPS" word mark / trademark and related patents on technologies belong to their respective owners.  
 \* The maximum resolution works for DP input only.  
 \* For best output performance, please always ensure that your graphic card is capable of achieving the maximum resolution and refresh rate of this Philips display.  
 \* Response time value equal to SmartResponse  
 \* MPRT is to adjust brightness for blur reduction, so cannot adjust brightness while MPRT is turned on. To reduce motion blur, LED backlight will strobe synchronously with screen refresh, which may cause noticeable brightness change.  
 \* MPRT is gaming-optimized mode. Turn on MPRT may cause noticeable screen flickering. It is recommended to turn off when you are not using the gaming function.  
 \* 10bits color only can be reached by DP, QHD@180Hz  
 \* DCI-P3 Coverage based on CIE1976, sRGB Area based on CIE1931, NTSC Area and Adobe RGB Area based on CIE1976  
 \* The monitor may look different from feature images.  
 \* The products and accessories listed on this leaflet may differ by country and region.