

Philips Gaming Monitor
4K UHD gaming monitor

Evnia 5000

27" (68.5 cm)
3840 × 2160 (4K UHD)

27M2N5810



Your gaming experience to the utmost

This monitor is designed for gamers looking for a 4K experience. From its 1ms MPRT and 160Hz refresh rate to its 4K UHD resolution, gamers can expect a vivid and high-quality picture experience.

Features designed for gamers needs

- LowBlue Mode for easy on-the-eyes productivity
- SmartImage game mode optimized for gamers
- Ambiglow intensifies entertainment with halo of light
- EasySelect menu toggle key for quick on-screen menu access
- SmartErgoBase enables people-friendly ergonomic adjustments

Built for fast action

- 160Hz refresh rates for ultra-smooth, brilliant images
- Low input lag reduces time delay between devices to monitor
- 1ms (MPRT) fast response for crisp image and smooth gameplay

Immersive visuals

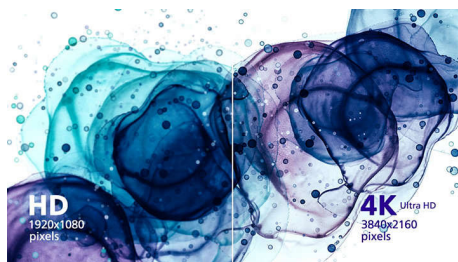
- IPS LED wide view technology for image and color accuracy
- UltraClear 4K UHD (3840x2160) resolution for precision
- DisplayHDR 400 for more lifelike and outstanding visuals

PHILIPS

4K UHD gaming monitor
Evnia 5000 27" (68.5 cm), 3840 x 2160 (4K UHD)

Highlights

UltraClear 4K UHD resolution



These Philips displays utilize high performance panels to deliver UltraClear, 4K UHD (3840 x 2160) resolution images. Whether you are demanding professional requiring extremely detailed images for CAD solutions, using 3D graphics applications or a financial wizard working on huge spreadsheets, Philips displays will make your images and graphics come alive.

SmartErgoBase



The SmartErgoBase is a monitor base that delivers ergonomic display comfort and provides cable management. The base can swivel, tilt and rotate to various angles to ensure maximum comfort. The height adjustable stand guarantees the optimal viewing level, reducing the physical strains of a long workday, while cable management reduces cable clutter and keeps the workspace neat and professional.

IPS technology



IPS displays use an advanced technology which gives you extra wide viewing angles of 178/178

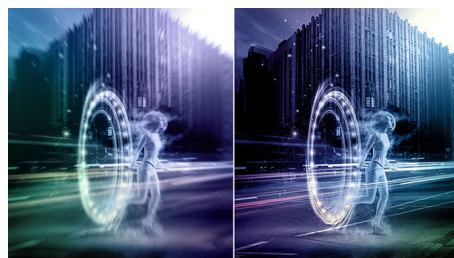
degree, making it possible to view the display from almost any angle. Unlike standard TN panels, IPS displays gives you remarkably crisp images with vivid colors, making it ideal not only for Photos, movies and web browsing, but also for professional applications which demand color accuracy and consistent brightness at all times.

160Hz Gaming



You play intense, competitive gaming. You demand display with lag free, ultra-smooth images. This Philips display redraws the screen image up-to 160 times per second, effectively faster than a standard display. A lower frame rate can make enemies appear to jump from spot to spot on the screen, making them difficult targets to hit. With 160Hz frame rate, you get those critical missing images on the screen which shows enemy movement in ultra-smooth motion so you can easily target them. With ultra-low input lag and no screen tearing, this Philips display is your perfect gaming partner.

1ms MPRT fast response



MPRT (motion picture response time) is more intuitive way to describe the response time, which directly refers the duration from seeing blurry noise to clean and crisp images. Philips gaming monitor with 1 ms MPRT effectively eliminates smearing and motion blur, delivers sharper and precise visuals to enhance gaming

27M2N5810/69

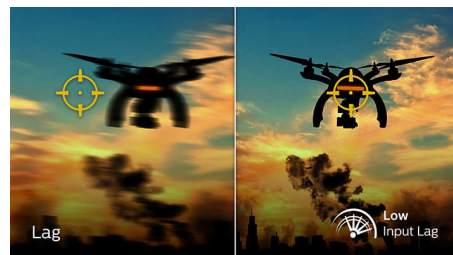
experience. Best choice for playing thrilling and twitch-sensitive games.

DisplayHDR 400



VESA-certified DisplayHDR 400 delivers a significant step-up from normal SDR displays. Unlike, other 'HDR compatible' screens, true DisplayHDR 400 produces astonishing brightness, contrast and colors. With global dimming and peak brightness up-to 400 nits, images come to life with notable highlights while featuring deeper, more nuanced blacks. It renders a fuller palette of rich new colors, delivering a visual experience that engages your senses.

Low Input Lag



Input lag is the amount of time that elapses between performing an action with connected devices and seeing the result on screen. Low input lag reduces the time delay between entering a command from your devices to monitor, greatly improve on playing twitch-sensitive video games, particularly important to whom plays fast-paced, competitive games.



Specifications

Connectivity

- Signal Input: HDMI 2.1 x 2, DisplayPort 1.4 x 1
- Sync Input: Separate Sync
- Audio (In/Out): Audio out
- HDCP: HDCP 1.4 (HDMI / DP), HDCP 2.2 (HDMI / DP)

Picture/Display

- Panel Size: 27 inch / 68.5 cm
- Aspect ratio: 16:9
- LCD panel type: IPS technology
- Backlight type: W-LED system
- Pixel pitch: 0.155 x 0.155 mm
- Brightness: 400 cd/m²
- Display colors: 1.07B (8-bits+FRC)
- Contrast ratio (typical): 1000:1
- SmartContrast: Mega Infinity DCR
- Response time (typical): 1 ms (Gray to Gray)*
- Viewing angle: 178° (H) / 178° (V), @ C/R > 10
- Picture enhancement: SmartImage game
- Maximum resolution: 3840 x 2160 @ 160 Hz
- Effective viewing area: 596.16 (H) x 335.34 (V)
- Scanning Frequency: 30 - 360 kHz (H) / 48 - 160 Hz (V)
- sRGB
- Delta E: < 2 (sRGB)
- Flicker-free
- Pixel Density: 163 PPI
- LowBlue Mode
- Display Screen Coating: Anti-Glare, 3H, Haze 25%
- MPRT: 1 ms
- Low Input Lag
- EasyRead
- Adaptive sync
- HDR: DisplayHDR 400 certified

Convenience

- Plug & Play Compatibility: DDC/CI, Mac OS X, sRGB, Windows 11 / 10 / 8.1 / 8 / 7
- User convenience: Power On/Off, Menu/OK, Input/Up, Game Settings/Down, SmartImage game/Back
- OSD Languages: Brazil Portuguese, Czech, Dutch, English, Finnish, French, German, Greek, Hungarian, Italian, Japanese, Korean, Polish, Portuguese, Russian, Spanish, Simplified Chinese, Swedish, Turkish, Traditional Chinese, Ukrainian
- Other convenience: Kensington lock, VESA mount (100x100mm), Halolight, LowBlue Mode

Stand

- Height adjustment: 130 mm
- Pivot: -/+ 90 degree
- Swivel: -/+ 30 degree
- Tilt: -5/20 degree

Power

- Power supply: 100-240VAC, 50-60Hz, Internal
- Off mode: 0.3 W (typ.)
- On mode: 35.7 W (typ.)
- Standby mode: 0.5 W (typ.)
- Power LED indicator: Operation - White, Standby mode- White (blinking)

Dimensions

- Packaging in mm (WxHxD): 731 x 467 x 191 mm
- Product without stand (mm): 613 x 367 x 52 mm
- Product with stand(max height): 613 x 518 x 247 mm

Weight

- Product with packaging (kg): 8.85 kg
- Product with stand (kg): 5.72 kg
- Product without stand (kg): 4.30 kg

Operating conditions

- Altitude: Operation: +12,000ft (3,658m), Non-operation: +40,000ft (12,192m)
- Temperature range (operation): 0°C to 40 °C
- MTBF: 50,000 (Excluded backlight) hour(s)
- Relative humidity: 20%-80 %
- Temperature range (storage): -20°C to 60 °C

Sustainability

- Environmental and energy: RoHS
- Recyclable packaging material: 100 %
- Specific Substances: Mercury free, PVC / BFR free housing

Compliance and standards

- Regulatory Approvals: CECP, CEL, CCC

Cabinet

- Color: Dark Slate
- Finish: Textured

Design

- Designed in Amsterdam, NL



Issue date 2024-06-03

Version: 1.1.1

EAN: 87 21038 00016 0

© 2024 Koninklijke Philips N.V.
All Rights reserved.

Specifications are subject to change without notice.
Trademarks are the property of Koninklijke Philips N.V.
or their respective owners.

www.philips.com

* "IPS" word mark / trademark and related patents on technologies belong to their respective owners.
* For best output performance, please always ensure that your graphic card is capable of achieving the maximum resolution and refresh rate of this Philips display.
* Response time value equal to SmartResponse
* MPRT is to adjust brightness for blur reduction, so cannot adjust brightness while MPRT is turned on. To reduce motion blur, LED backlight will strobe synchronously with screen refresh, which may cause noticeable brightness change.
* MPRT is gaming-optimized mode. Turn on MPRT may cause noticeable screen flickering. It is recommended to turn off when you are not using the gaming function.
* The products and accessories listed on this leaflet may differ by country and region.
* The monitor may look different from feature images.