

# PHILIPS

## EVNIA

Quad HD gaming  
monitor

Fast IPS Gaming  
monitor

Evnia 5000

27" (68.5 cm)

2560 x 1440 (QHD)

27M2N5500



## Your gaming experience to the utmost

This monitor is equipped for any game. With its 0.5 ms Smart MBR, 180 Hz refresh rate and Quad HD resolution, it is made to bring gamers an all-around and visually pleasing gaming experience.

### Features designed for gamers' needs

- LowBlue mode and Flicker-free easy-on-the eyes viewing
- New OSD features for a much more engaging gaming experience
- Smart Crosshair: for better aim and more fun
- SmartErgoBase enables user-friendly ergonomic adjustments

### Built for fast action

- 180 Hz refresh rates for ultra-smooth, brilliant images
- Effortlessly smooth gameplay with AMD FreeSync™ technology
- SmartImage game mode optimised for gamers
- 0.5 ms ultra-fast speed for crisp images and smooth gameplay
- Certified NVIDIA® G-SYNC® compatible for smooth, fast gaming

### Immersive visuals

- Crystal clear images with Quad HD 2560 x 1440 pixels
- 1.07 billion colours for stunning colour and the finest gradation

### Immersive visuals

# Fast IPS Gaming monitor

Quad HD gaming monitor

27M2N5500/00

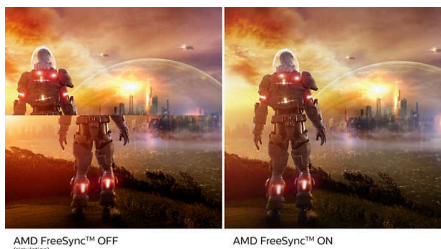
## Highlights

### 180 Hz Gaming



You play intense, competitive gaming. You demand display with lag-free, ultra-smooth images. This display redraws the screen image up to 180 times per second, effectively faster than a standard display. A lower frame rate can make enemies appear to jump from spot to spot on the screen, making them difficult targets to hit. With a 180 Hz frame rate, you get those critical missing images on the screen which show enemy movement in ultra-smooth motion so you can easily target enemies. With ultra-low input lag and no screen tearing, this Philips display is your perfect gaming partner.

### Ultra-smooth gaming



Gaming shouldn't be a choice between choppy gameplay or broken frames. With the new Philips monitor it doesn't have to be. Get fluid, artefact-free performance at virtually any frame rate with AMD FreeSync™ technology, smooth, quick refresh and ultra-fast response time.

### SmartImage Game mode



The new Philips gaming display has quick-access OSD fine-tuned for gamers, offering you multiple options. "FPS" mode (First person shooting)

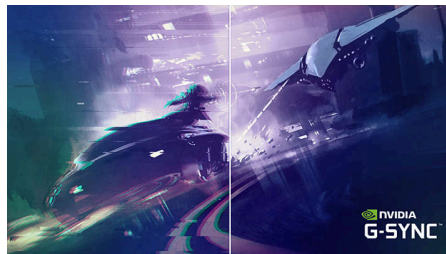
improves dark themes in games, allowing you to see hidden objects in dark areas. "Racing" mode adapts the display with the fastest response time and high colour, along with image adjustments. "RTS" mode (Real-time strategy) has a special SmartFrame mode that enables highlighting of specific area and allows for size and image adjustments. Gamer 1 and Gamer 2 enable you to save personal customised settings based on different games, ensuring best performance.

### 0.5 ms Smart MBR fast response



The Philips Evnia with 0.5 ms Smart MBR effectively eliminates smearing and motion blur, and delivers sharper and more precise visuals to enhance your gaming experience. Fast-moving action and dramatic transitions will be rendered smoothly. It's the best choice for playing thrilling and twitch-sensitive games.

### NVIDIA® G-SYNC® compatible



When playing intense games with high refresh rates, screen tearing may appear without optimal graphics synchronisation. This Philips display is certified as NVIDIA® G-SYNC® compatible, reducing screen tearing and syncing your monitor's refresh rate with your graphic card's output for a smoother gaming experience. Scenes appear instantly, objects look sharper, and gameplay is smooth, giving you a stunning visual experience and a serious competitive edge.

### CrystalClear images



These Philips screens deliver CrystalClear, Quad HD 2560 x 1440 or 2560 x 1080 pixel images. Utilising high performance panels with a high-density pixel count enabled by high bandwidth sources, these new displays will make your images and graphics come alive. Whether you are a demanding professional requiring extremely detailed information for CAD-CAM solutions using 3D graphic applications, or a financial wizard working on huge spreadsheets, Philips displays will give you CrystalClear images.

### SmartContrast



SmartContrast is a Philips technology that analyses the contents you are displaying, automatically adjusting colours and controlling backlight intensity to dynamically enhance contrast for the best digital images and videos or when playing games where dark hues are displayed. When Economy mode is selected, contrast is adjusted and backlighting fine-tuned for just-right display of everyday office applications and lower power consumption.



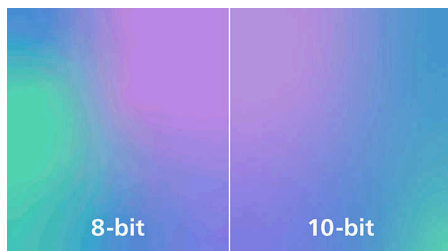
# Fast IPS Gaming monitor

Quad HD gaming monitor

27M2N5500/00

## Highlights

### 1.07 billion colours



This display delivers outstanding colour depth with 1.07 billion colours and the finest gradation for recreating smooth, precise and vivid images. Enjoy accurate and true-to-life visuals whether gaming, watching videos or working on colour-critical work with graphics applications.

### DisplayHDR 400



VESA-certified DisplayHDR 400 delivers a significant step up from normal SDR displays. Unlike other 'HDR-compatible' screens, true DisplayHDR 400 produces astonishing brightness, contrast and colours. With global dimming and minimum 400 nits of brightness, images come to life with notable highlights while featuring deeper, more nuanced blacks. It

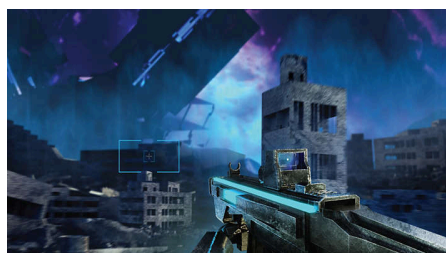
renders a fuller palette of rich new colours, delivering a visual experience that engages your senses.

### SmartErgoBase



The SmartErgoBase is a monitor base that delivers ergonomic display comfort and provides cable management. The base can swivel, tilt and rotate to various angles to ensure maximum comfort. The height-adjustable stand guarantees the optimal viewing level, reducing the physical strains of a long workday, while cable management reduces cable clutter and keeps the workspace neat and professional.

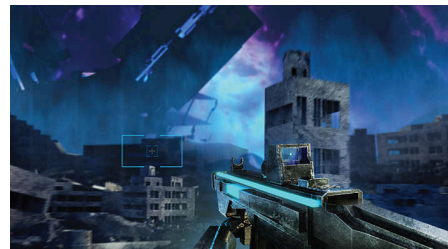
### Smart Crosshair



Colour of Crosshair is set by default. When Smart Crosshair is on, the colour will change as a complementary colour to the background

colour. Smart Crosshair enhances the aiming accuracy so you can spot the enemies more easily.

### New features for better gaming



Philips Evnia is equipped with new features in OSD (on-screen display). Smart MBR Sync enables a great pair of MPRT together with Adaptive-sync, eliminating motion blur and ghosting while guaranteeing sharp and speedy gaming visuals with high frame rates. Smart ShadowBoost enhances dark scenes, making more details visible without overexposure. Smart Crosshair lets you never miss a single target.

### LowBlue mode and Flicker-free



Our LowBlue Mode and Flicker-free technology have been developed to reduce eye strain and fatigue often caused by long hours in front of a monitor.





# Fast IPS Gaming monitor

Quad HD gaming monitor

27M2N5500/00

## Specifications

### Picture/Display

**Panel Size:** 27 inch/68.5 cm  
**Aspect ratio:** 16:9  
**LCD panel type:** IPS technology  
**Backlight type:** W-LED system  
**Pixel pitch:** 0.2331 x 0.2331 mm  
**Brightness:** 350nits; 450nits (HDR On); 500nits (HDR Peak) cd/m<sup>2</sup>  
**Brightness uniformity:** 93-105%  
**Display colours:** 1.07 Billion (8 bits + FRC)  
**Colour gamut (typical):** DCI-P3:93.5%, sRGB: 125%, NTSC 108%, Adobe RGB 106%\*  
**Contrast ratio (typical):** 1200:1  
**SmartContrast:** Mega Infinity DCR  
**Response time (typical):** 1 ms (Grey to Grey)\*  
**Viewing angle:** 178° (H)/178° (V), @ C/R > 10  
**Picture enhancement:** SmartImage game  
**Maximum resolution:** 2560 x 1440 @ 180 Hz (DP), 2560 x 1440 @ 144 Hz (HDMI)  
**Effective viewing area:** 596.736 (H) x 335.664 (V)  
**Scanning Frequency:** HDMI: 30 - 230 kHz (H)/48 - 144 Hz (V); DP: 30 - 280 kHz (H)/48 - 180 Hz (V) sRGB  
**Delta E:** <2 (sRGB)  
**Flicker-free**  
**Pixel Density:** 108.79 PPI  
**LowBlue Mode**  
**Display Screen Coating:** Anti-Glare, 3H, Haze 25%  
**Low Input Lag:** Yes\*  
**EasyRead**  
**AMD FreeSync™ technology**  
**G-SYNC**  
**HDR:** DisplayHDR 400 certified  
**Smart MBR:** 0.5 ms\*

### Connectivity

**Signal Input:** HDMI 2.0 x 2, DisplayPort 1.4 x 1  
**Sync Input:** Separate Sync  
**Audio (In/Out):** Headphone out  
**HDCP:** HDCP 1.4 (HDMI/DP), HDCP 2.2 (HDMI/DP)

### Convenience

**Plug and Play Compatibility:** DDC/CI, Mac OS, sRGB, Windows 11/10  
**User convenience:** Power On/Off, Menu/OK, Input/Up, Game Settings/Down, SmartImage game/Back  
**OSD Languages:** Brazil Portuguese, Czech, Dutch, English, Finnish, French, German, Greek,

Hungarian, Italian, Japanese, Korean, Polish, Portuguese, Russian, Spanish, Simplified Chinese, Swedish, Turkish, Traditional Chinese, Ukrainian  
**Other convenience:** Kensington lock, VESA mount (100 x 100 mm), LowBlue Mode

### Stand

**Height adjustment:** 130 mm  
**Pivot:** -/+ 90 degree  
**Swivel:** -/+ 30 degree  
**Tilt:** -5/20 degree

### Power

**Power supply:** Internal, 100-240 VAC, 50/60 Hz  
**Off mode:** 0.3 W (typ.)  
**On mode:** 29.8 W (typ.)  
**Standby mode:** 0.5 W (typ.)  
**Power LED indicator:** Operation - White, Standby mode - White (flashing)  
**Energy Label Class:** E

### Dimensions

**Packaging in mm (W x H x D):**  
730 x 478 x 188 mm  
**Product without stand (mm):** 614 x 368 x 60 mm  
**Product with stand (max height):**  
614 x 519 x 261 mm

### Weight

**Product with packaging (kg):** 9.32 kg  
**Product with stand (kg):** 5.68 kg  
**Product without stand (kg):** 3.86 kg

### Operating conditions

**Altitude:** Operation: +12,000 ft (3658 m), Non-operation: +40,000 ft (12,192 m)  
**Temperature range (operation):** 0°C to 40 °C  
**MTBF:** 50 000 (Excluded backlight) hour(s)  
**Relative humidity:** 20%-80 %  
**Temperature range (storage):** -20°C to 60 °C

### Sustainability

**Environmental and energy:** RoHS  
**Recyclable packaging material:** 100 %  
**Specific Substances:** PVC/BFR free housing  
**Post-consumer recycled plastics:** 85%\*

### Compliance and standards

**Regulatory Approvals:** CB, CCC, CEC, CEL, CE Mark, TUV-BAUART, EAC, MEPS, PSB, BSMI, EMF, FCC, ICES-003, TUV/ISO9241-307, UKCA

### Cabinet

**Colour:** Dark Slate  
**Finish:** Texture

### What's in the box?

**Cables:** Display port cable, HDMI cable and Power cable  
**Monitor with stand**  
**User Documentation**

- \* "IPS" word mark / trademark and related patents on technologies belong to their respective owners.
- \* The maximum resolution works for DP input only.
- \* For best output performance, please always ensure that your graphic card is capable of achieving the maximum resolution and refresh rate of this Philips display.
- \* Response time value equal to SmartResponse
- \* Smart MBR adjusts brightness for blur reduction, so you cannot adjust brightness while Smart MBR is turned on. To reduce motion blur, the LED backlight will strobe synchronously with each screen refresh, which may cause a noticeable change in brightness.
- \* Smart MBR is a gaming-optimised mode. Turning on Smart MBR may cause noticeable screen flickering. We recommend turning it off when you are not using the gaming function
- \* 2020 Advanced Micro Devices, Inc. All rights reserved. AMD, the AMD Arrow logo, AMD FreeSync™ and combinations thereof are trademarks of Advanced Micro Devices, Inc. Other product names used in this publication are for identification purposes
- \* NVIDIA® G-SYNC® support interface: DisplayPort
- \* Make sure to update NVIDIA® G-SYNC® driver to the latest version, see more information on NVIDIA website: <https://www.nvidia.com/>
- \* Make sure that your graphic card supports NVIDIA® G-SYNC®
- \* This monitor strives for sustainability: the stand's feet are made with 35% recycled plastic and the monitor's chassis is made up of 85% post-consumer recycled plastic.
- \* Please note that the low input lag feature is permanently enabled and cannot be switched off.
- \* DCI-P3 Coverage based on CIE1976, sRGB Area based on CIE1931, NTSC Area and Adobe RGB Area based on CIE1976
- \* The monitor may look different from feature images.
- \* The products and accessories listed on this leaflet may differ by country and region.

