

**PHILIPS**

BlueSeal Mobile 1.5T

Mobile MR systems

HOSPITAL



# The road to sustainable mobile MR

Fast and patient centric MRI services where and when you need it

BlueSeal Mobile 1.5T is not yet CE marked and not yet available for sale outside the USA.



# Bring MRI services to where your patients are

With Mobile MRI systems, you are bringing high quality MRI services to your patients—whether this is to meet the growing demand for MRI scans in your hospital, a temporary solution while your current system is being updated or replaced, or bringing MRI services closer to underserved populations and patients in more remote areas.



## Ingenia Ambition 1.5T X

High performance system that delivers superb image quality even for challenging patients.

45 mT/m, 200 T/m/s



## Ingenia Ambition 1.5T S

Versatile system that supports high volumes with fast exams for all anatomies.

33 mT/m, 120 T/m/s



## MR 5300 1.5T

Efficient system with ultralight adaptable coils that assures exceptional ROI for general MRI exams.

33 mT/m, 120 T/m/s

Check magnet-specific documentation or consult your local Philips representative for more information about these options.

## First and only 1.5T MR portfolio with helium-free operations

Our innovative portfolio of BlueSeal Mobile MRI systems with helium-free operations gives you the flexibility to deliver fast and patient-friendly MRI services where and when needed. Combined with an attractive TCO in daily operations and eliminating helium-related costs associated to loss of helium during the lifetime. The systems are designed to deliver smart productivity with automation and AI tools for high productivity and high clinical quality to meet your imaging needs. Unlocking new possibilities on the road to sustainable mobile MRI.

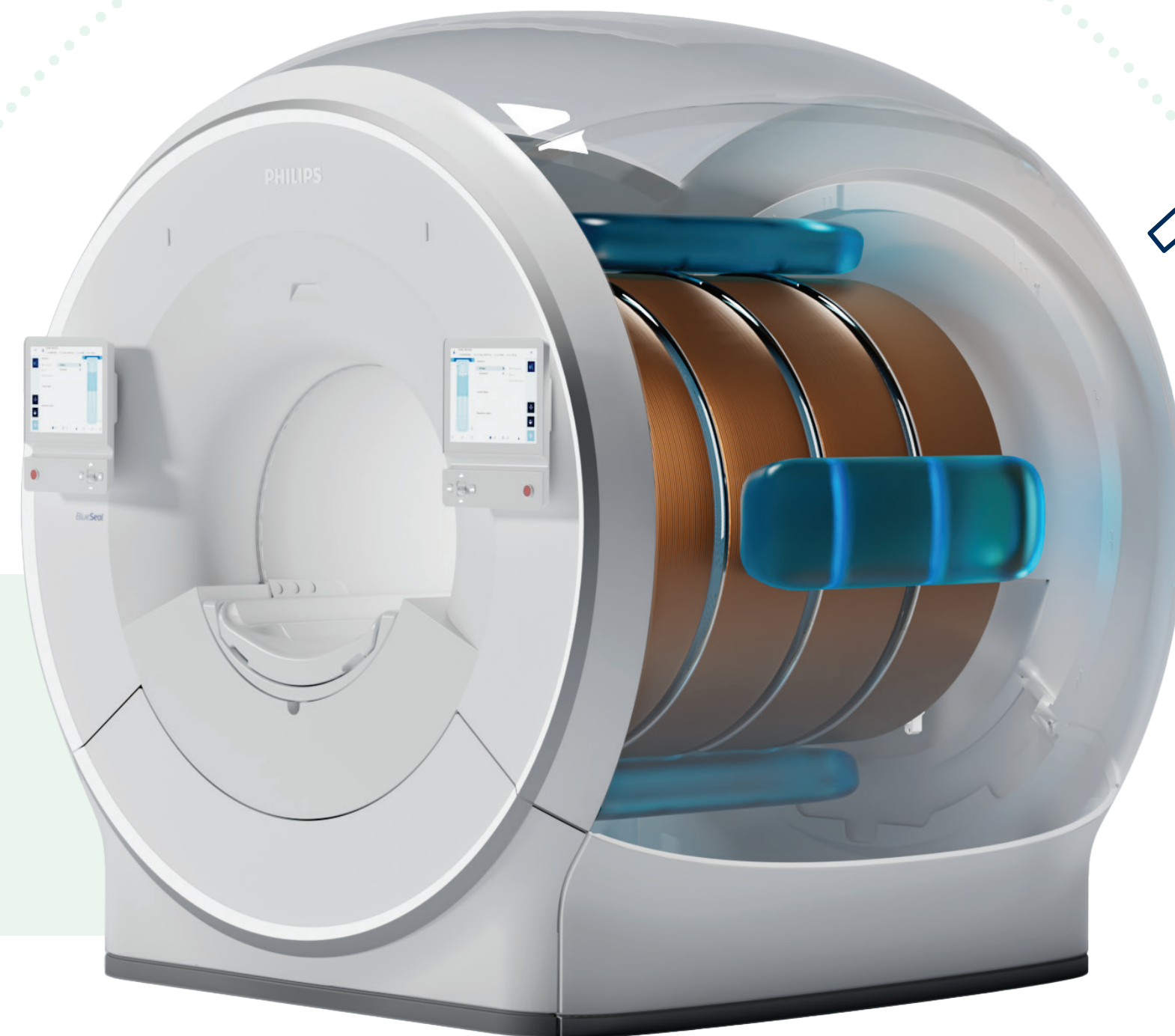


# Why a BlueSeal Mobile MRI?

This innovative portfolio of mobile MRI systems is powered by Philips exclusive and industry's first BlueSeal magnet for helium-free operations. The lightweight magnet unlocks new siting options, and the Eco-design takes away the hassle of helium refills and the need for a vent pipe.<sup>1</sup> The system can easily be discharged and re-energized through the console.

## Helium-free MR operations

Philips BlueSeal magnet safeguards the small amount of liquid helium (7 liter) needed for cooling inside the bore. There's no helium loss, no refills, and no unexpected helium related costs during the lifetime. No helium-related expertise is needed on-site.<sup>2</sup> Your mobile MR is free to drive around flexibly, giving access to more patients in need of MRI.



## Experience the unique advantages of BlueSeal MRI



### Reduce consumption of scarce helium

- The magnet safeguards the small amount of liquid helium needed for cooling
- Eliminates the hassle of helium refills and helps you to avoid helium related unexpected costs.



### Improve image quality and speed

- Enhances diagnostic confidence by providing up to 65% greater resolution<sup>3</sup>
- Scans up to three times faster<sup>3</sup>



### Manage risk and avoid downtime

- Allows for fast de-energizing from the console
- Decreases downtime during emergency situations
- No on-site helium related expertise is needed



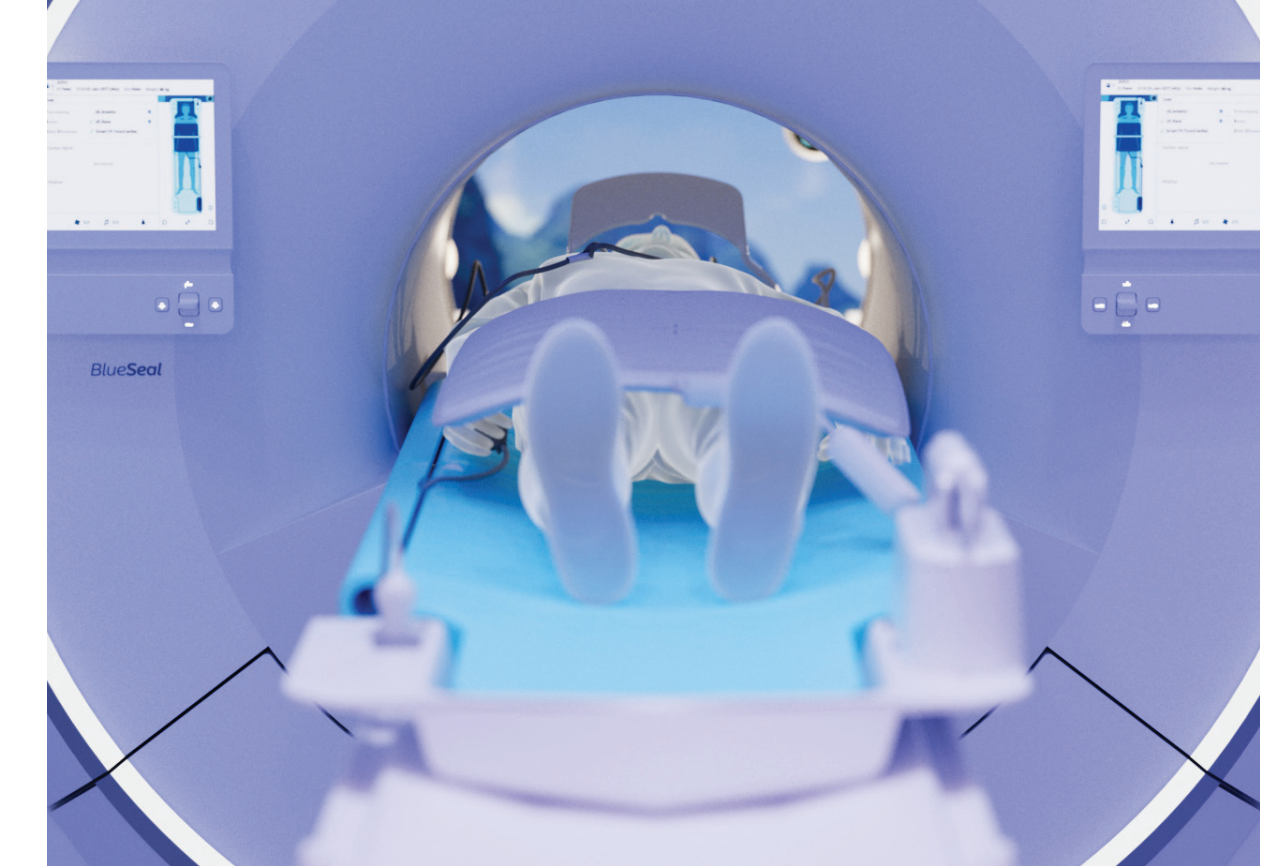
### Unlock new siting options

- The BlueSeal magnet is 900kg lighter<sup>4</sup> allowing flexible siting
- Does not need a vent pipe<sup>1</sup>, thus reduces installation costs and siting limitations



# Smart productivity with an automated and patient-centric workflow

Our BlueSeal Mobile MRI systems incorporate the latest Philips technology in terms of productivity and workflow. The systems contain a wealth of AI-driven technologies to simplify and automate tasks for the technologists to make it easy for them to deliver high quality images for a confident diagnosis with the efficiency you need. Your staff is even able to scan up to 3 times faster<sup>3</sup> with the latest SmartSpeed technology, acquiring ultra-fast images.



## Enhancing the care environment with Philips Ambient Experience

Ambient Experience helps create a calming environment that supports efficient patient care and is ideal for patients that don't feel comfortable in confined spaces. Dynamic colored lighting and calming sound accomplish a welcoming and relaxing ambiance for patients, while In-bore Connect provides positive distraction and helps guide them during the examination. By making the patient more comfortable, you could improve patient compliance and potentially reduce the number of interruptions and rescans.



# High clinical quality

Our mobile systems are equipped with a wealth of clinical capabilities – with the aim of helping you deliver consistently high-quality outcomes, even for complex cases, while maintaining short and more predictable timeslots. We see this together with the AI driven technologies that support your technologists in delivering consistent results as the path to confident diagnosis.

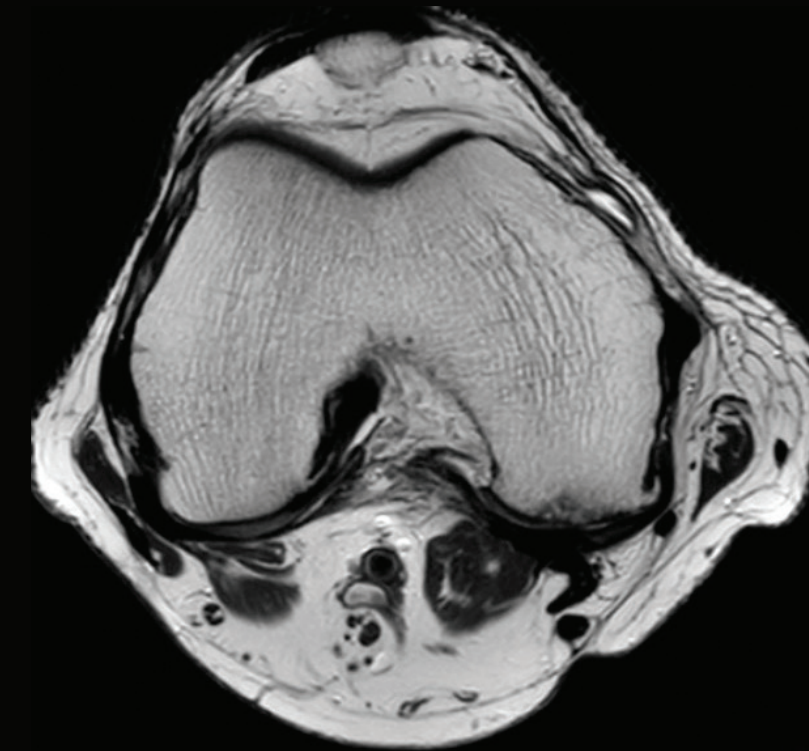


## Giving your staff the support they need on the road

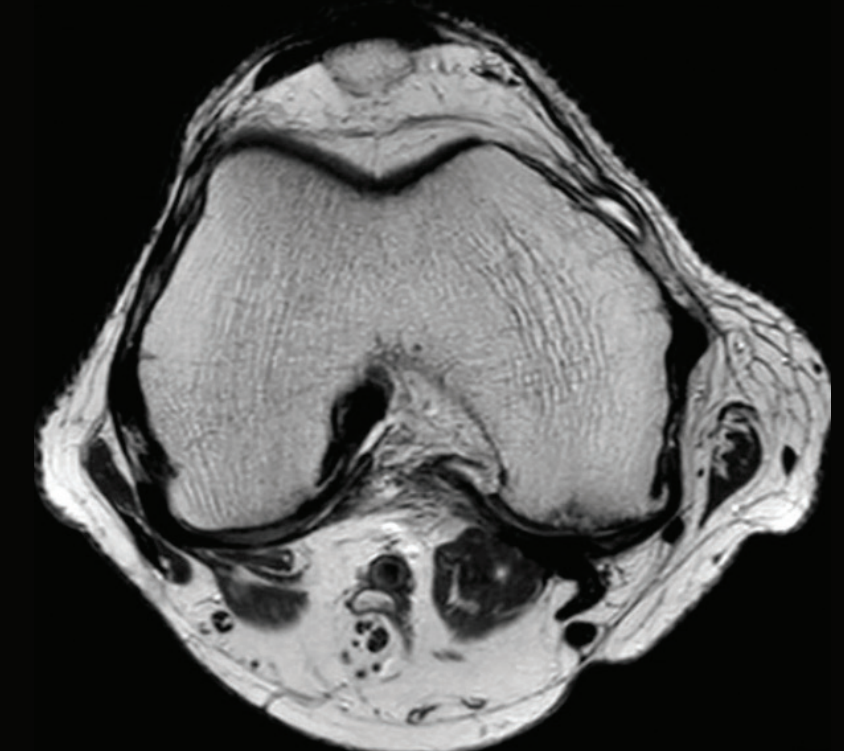
Radiology Operations Command Center (ROCC) is multi-vendor, multi-modality, multi-site virtual training and collaboration solution that connects imaging experts at a command center or workspace with technologists across their organizations, including in mobile environments. ROCC enables real-time collaboration and over-the-shoulder support, breaking down communication barriers and helping maximize the value and reach of top staff to deliver the image quality you need.

## Up to 3x faster scans<sup>3</sup>

Philips SmartSpeed delivers image quality and speed without compromise. It increases imaging speed by up to a factor of 3<sup>3</sup>, provides up to 65% greater resolution<sup>3</sup> to deliver outstanding image quality, and is compatible with 97% of clinical protocols.<sup>5</sup> It covers motion imaging, imaging near implants, free-breathing imaging and diffusion-weighted imaging to address the needs of a broad range of patients in various conditions.



**Conventional**  
Ax T2w TSE  
0.5 x 0.6 x 3.0 mm  
3:00 min



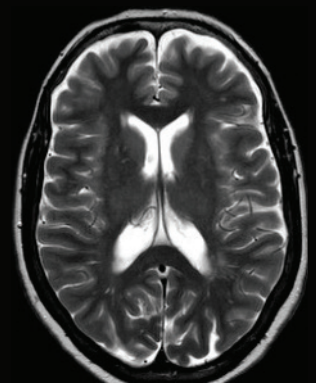
**SmartSpeed**  
Ax T2w TSE  
0.5 x 0.6 x 3.0 mm  
1:02 min

System: Ingenia Ambition 1.5T

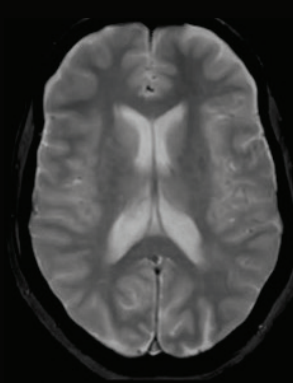


## Smart productivity with AI

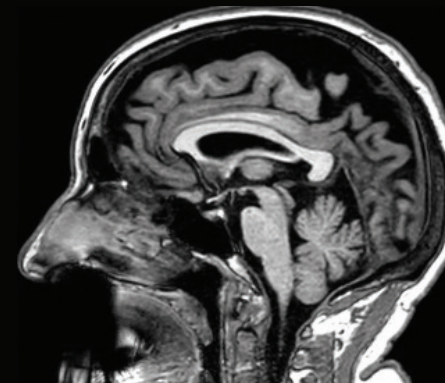
SmartSpeed total exam time: **8:32 min**



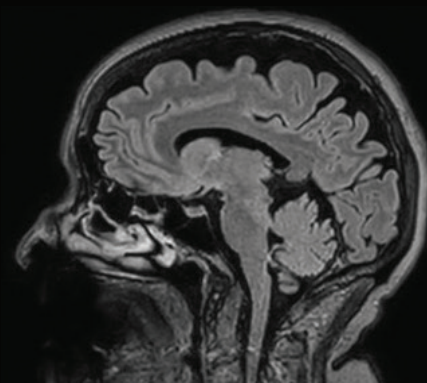
**2D T2w TSE**  
0.6 x 0.75 x 5.0 mm  
1:25 min



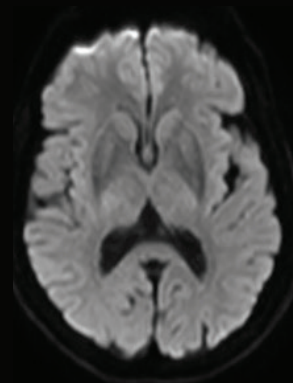
**2D T2w FFE**  
0.9 x 1.1 x 5.0 mm  
2:00 min



**3D T1w TFE**  
1.1 x 1.1 x 1.1 mm  
2:08 min



**3D BrainVIEW FLAIR**  
1.2 x 1.2 x 1.2 mm  
2:24 min

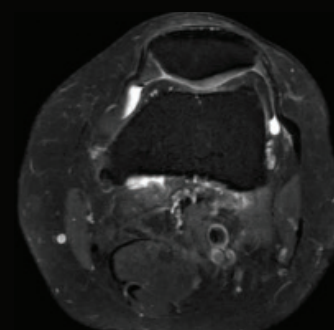


**DWI b1000**  
1.5 x 2.0 x 5.0 mm  
0:35 min

SmartSpeed total exam time: **7:08 min**



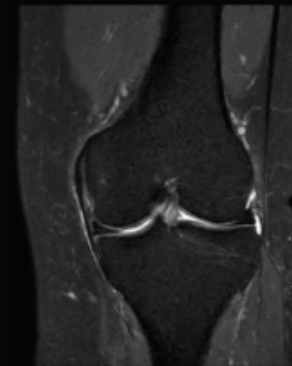
**PDw Sag.**  
0.5 x 0.6 x 3.0 mm  
1:14 min



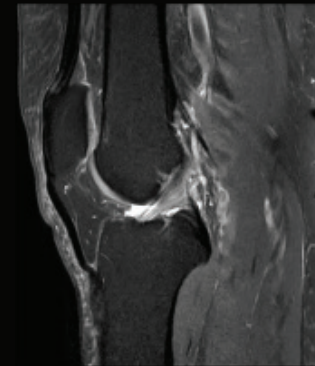
**PD Spair Tra.**  
0.5 x 0.6 x 3.0 mm  
1:40 min



**T1w Cor.**  
0.5 x 0.6 x 3.0 mm  
0:47 min



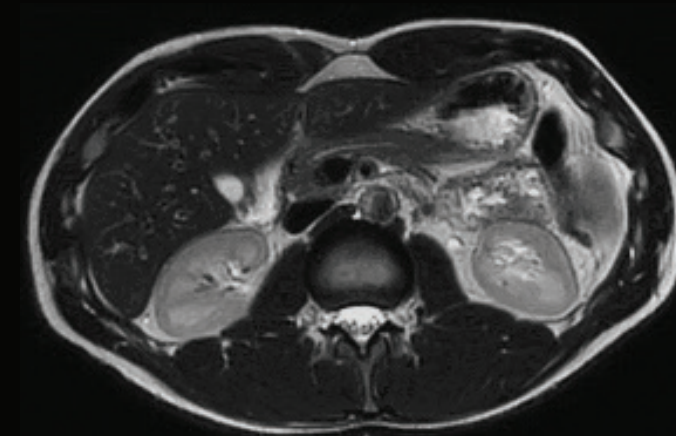
**PD Spair Cor.**  
0.5 x 0.6 x 3.0 mm  
1:27 min



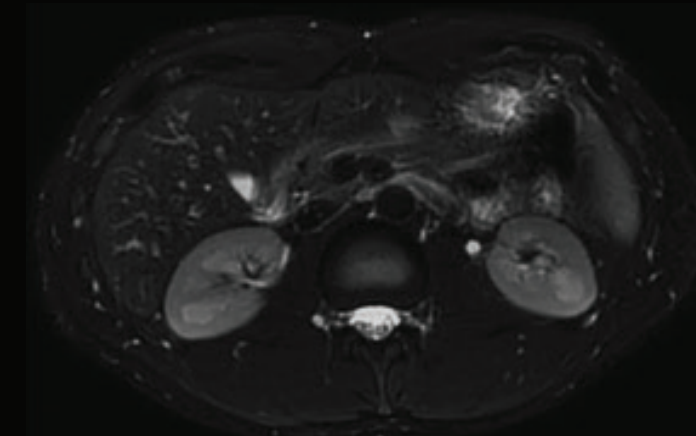
**PD Spair Sag.**  
0.5 x 0.6 x 3.0 mm  
2:00 min

## Full free-breathing pancreas exam

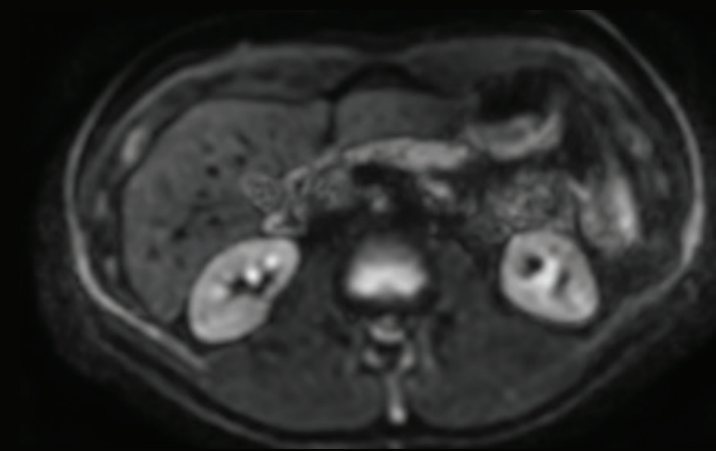
SmartSpeed total exam time: **9:52 min**



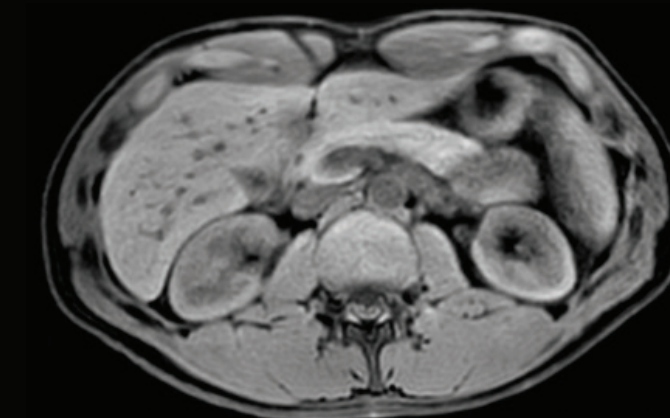
**T2w TSE SmartSpeed MotionFree**  
1.0 x 1.0 x 5.0 mm  
2:15 min



**T2w TSE FatSat SmartSpeed MotionFree**  
1.2 x 1.2 x 5.0 mm  
2:48 min



**Diffusion b800**  
3.0 x 3.0 x 5.0 mm  
2:42 min



**4D FreeBreathing**  
1.5 x 1.5 x 3.5 mm  
2:07 min

System: Ingenia Ambition 1.5T

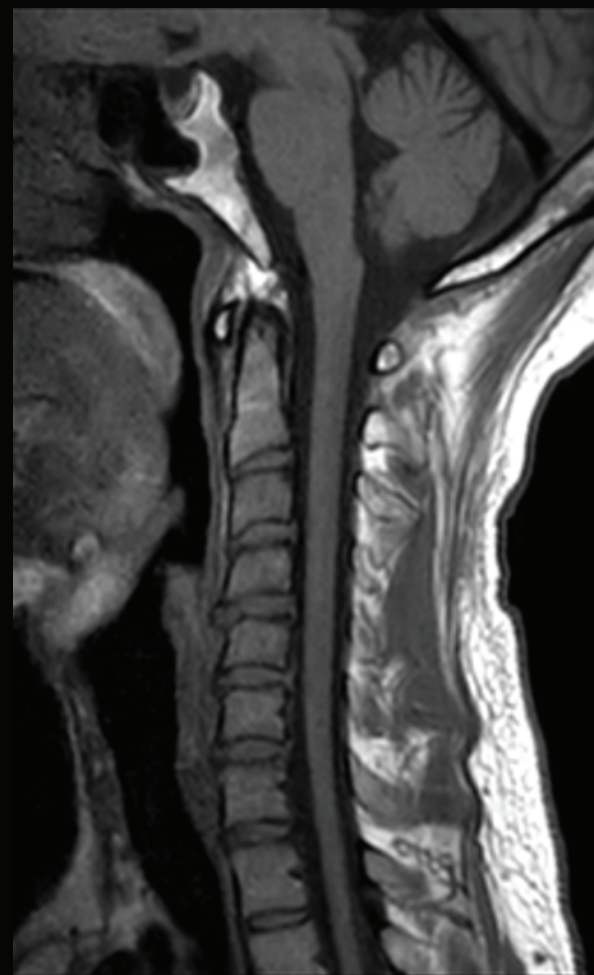


## C-spine with SmartSpeed

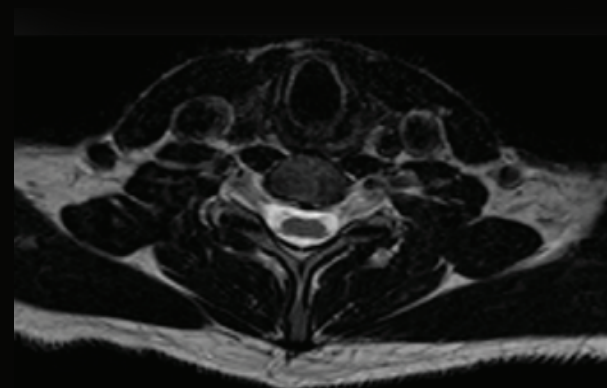
SmartSpeed total exam time: 7:33 min



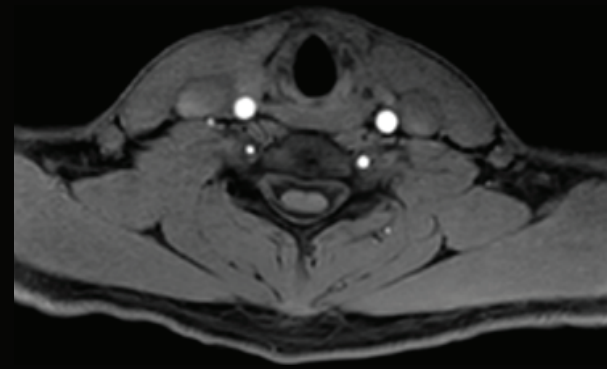
**T2w Sag.**  
0.7 x 0.9 x 3.0 mm  
1:18 min



**T1w Sag.**  
0.9 x 0.9 x 3.0 mm  
1:39 min



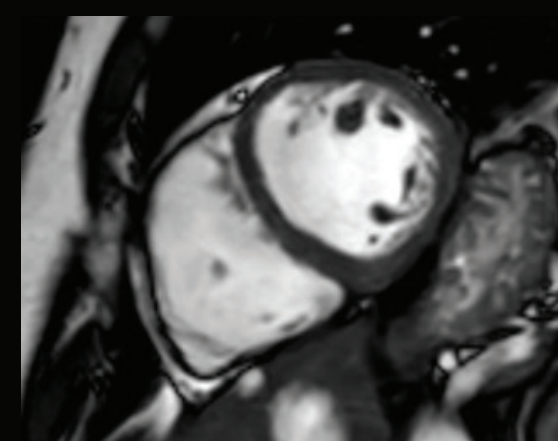
**T2w Tra.**  
0.6 x 0.9 x 3.0 mm  
2:31 min



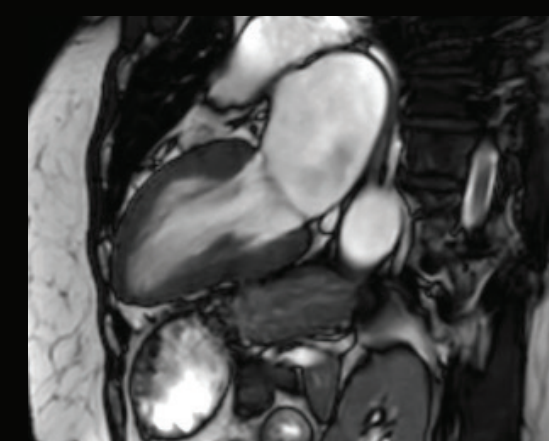
**T1 mDixon Tra.**  
1.0 x 1.0 x 3.0 mm  
2:05 min

System: Ingenia Ambition 1.5T

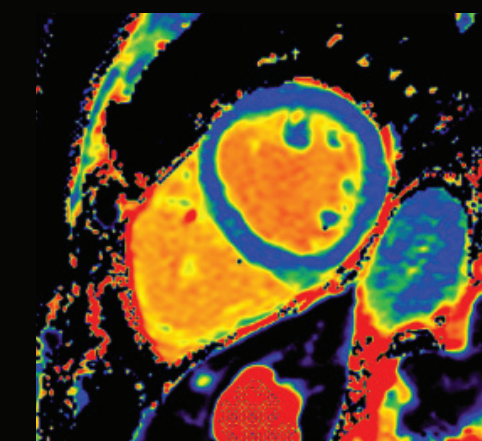
## Non-contrast cardiac protocol with SmartSpeed



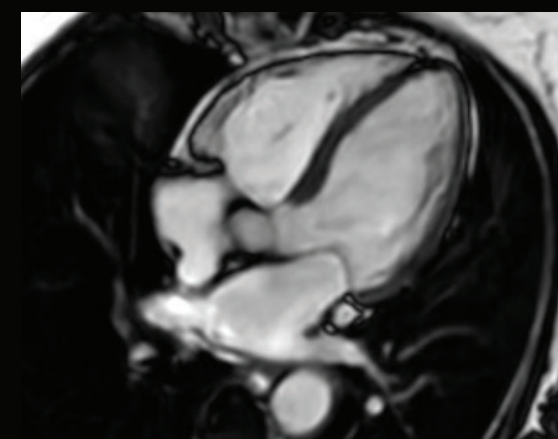
**Cine BTFE SA**  
1.3 x 1.4 x 8.0 mm  
10s bh



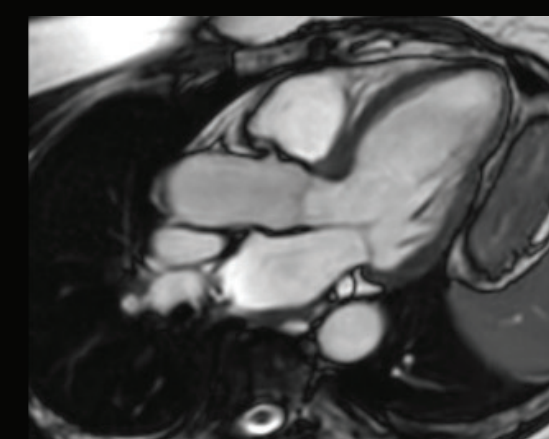
**Cine BTFE 2ch**  
1.3 x 1.4 x 8.0 mm  
10s bh



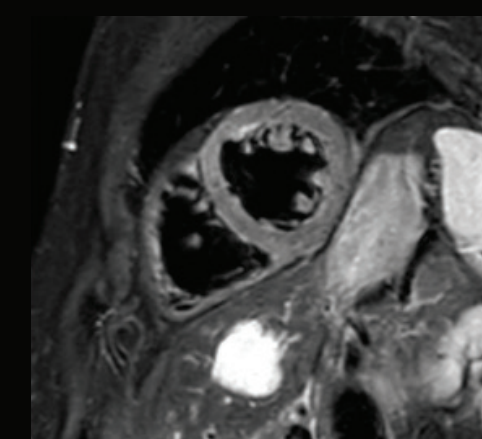
**T1 mapping**  
1.4 x 1.4 x 10 mm  
11s bh



**Cine BTFE 4ch**  
1.9 x 1.8 x 8.0 mm  
10s bh



**Cine BTFE LVOT**  
1.7 x 1.7 x 8.0 mm  
10s bh



**T2w STIR Black Blood**  
1.1 x 1.3 x 6 mm  
12s bh

System: MR 5300



1. Due to closed magnet system.
2. Based on IEC60601-2-33 requirements.
3. Compared to Philips SENSE imaging.
4. Compared to the Ingenia 1.5T zero boil-off magnet.
5. On average, measured across a sample of sites from Philips MR installed base.

2024 Koninklijke Philips N.V. All rights reserved. Specifications are subject to change without notice. Trademarks are the property of Koninklijke Philips N.V. or their respective owners.

452299185161 \* APR 2024



**How to reach us**

Please visit [www.philips.com](http://www.philips.com)  
[healthcare@philips.com](mailto:healthcare@philips.com)