

# PHILIPS

IPL Hair removal device

Lumea IPL Advanced

5 manual intensity settings

2 attachments: body, face

Lumea IPL App

Corded use

BRI924/00



## Enjoy 3 months of silky smooth skin\*

At least 85% hair reduction in 3 sessions\*\*

Lumea IPL Advanced delivers effective and long-lasting results with dedicated attachments for each body area and Lumea IPL app. Corded.

### Gentle and effective for long-lasting smooth skin

- Treat only 2 x a month for fast results
- Developed with dermatologists to be easy and effective
- Extra-long cable for added flexibility while treating

### Full solution for face and body

- Full solution for face and body with 2 attachments
- Comes with VisaPure mini facial cleanser
- Suitable for a wide range of skin tones and hair colours

### Personalised IPL hair removal treatment

- Optimise your routine with the Philips Lumea IPL app
- Skin Tone Sensor and 5 intensity settings

# Highlights

## 2 x a month for fast results



Every 2 weeks to get started — that's half as many treatments as other brands. Followed by touch-ups just once a month. That's it. Covering both lower legs takes 15 minutes.

## Skin Tone Sensor



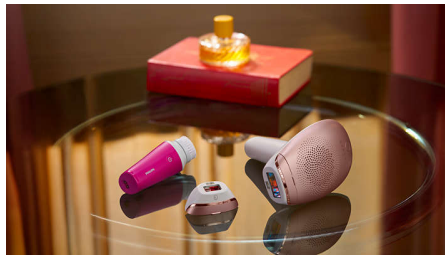
Choose from 5 intensity settings for a comfortable experience. The Skin Tone Sensor prevents you from treating areas of your skin that are too dark for IPL treatment.

## Extra-long cable



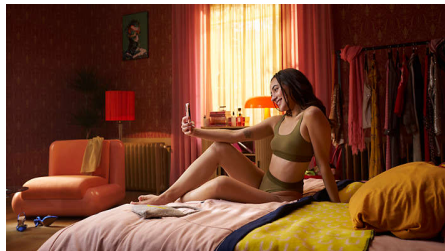
Lumea Series 7000 is convenient to use thanks to an extra-long cable for easy access and enhanced manoeuvrability.

## 2 dedicated attachments



Different heads for body and face work, with speed and precision for gentle use, even on sensitive areas. The face attachment has an integrated light filter for precise treatment.

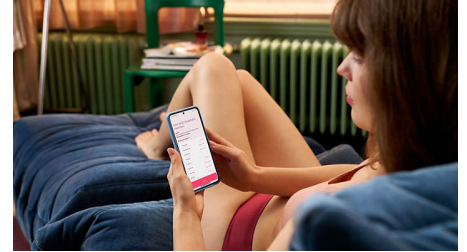
## Developed with dermatologists



As a leader in health technology, Philips developed Lumea IPL in consultation with dermatologists, for easy and effective use in

the safety of your home. Derived from technology used in professional salons, Lumea IPL offers gentle treatment, even on sensitive areas.

## Philips Lumea IPL app



Our free coaching app helps you plan and stick to your treatment schedule, then takes you through each session step by step. Downloaded by more than 2.1 million users.

## VisaPure mini facial cleanser

Complete your beauty routine: The VisaPure mini facial cleanser is a compact and effortless skin cleansing device for visibly fresh and soft skin.

## For many skin and hair types



IPL needs contrast between the pigment in the hair colour and the pigment in the skin tone; it therefore works on naturally dark blonde, brown and black hair and on skin tones from fair to medium brown (I-IV).

# Specifications

## Safety and adjustable settings

**Integrated UV filter:** Protects skin from UV light

**5 light energy settings:** Adjustable to your skin type

**Integrated safety system:** Prevent unintentional flashing

## Application mode

**Slide and Flash:** For quick application

**Corded/cordless use:** Corded use

**Stamp and Flash:** For treatment on small areas

## Power

Corded use

## Technical specifications

**High performance lamp:** Built to last, 250,000 flashes, equivalent to 20 years of lamp lifetime\*\*

**Voltage:** 100-240 V

## Attachments

**Body attachment (4 cm<sup>2</sup>):** For use below the neckline

**Face attachment (2 cm<sup>2</sup>):** For use below the eyes

## Service

**Warranty:** 2-year global warranty + 1 extra year of warranty upon product registration within 90 days

## Items included

**Instructions for use:** User manual

**Storage:** Beauty pouch

**Adapter:** 24 V/1500 mA

**Accessory:** Cleaning cloth

## Application time

**Bikini:** 4 min

**Lower leg:** 15 min

**Underarms:** 2.5 min

**Bikini line:** 4 min

**Face areas:** 2 min

## VisaPure mini sensitive

**Application areas:** Face and neck

**Ease of use:** Waterproof, Cordless, Rechargeable, 1 speed setting

**Items included:** Sensitive skin brush head, Power adapter

**Accessories:** Power adapter

**Power:** Power adapter

## Technical specs. attachments

**Body attachment:** Window size: 4.0 cm<sup>2</sup>, Treatment for body: legs, arms, stomach and underarms

**Face attachment:** Window size: 2 cm<sup>2</sup>, extra filter, Treatment for face: upper lip, chin and jawline

