

# PHILIPS



## Hair Dryer

### 5000 Series

2300 W

ThermoShield technology

Mineral ionic and 4 x ionic care

3 heat and 2 speed settings



BHD530/00

## Fast drying, with no heat damage\*\* with ThermoShield technology

ThermoShield technology gives you ultimate protection from heat damage, by actively controlling the air temperature of the dryer to an optimum level.

#### Beautifully styled hair

- Precise control with 6 heat and speed settings
- Slim nozzle for touch-ups and detailed styling

#### Care and protect

- A powerful motor creates air speeds of up to 110 km/h\*\*\*\*
- 4 x ionic care\* for shiny, frizz-free hair
- Reduces UV damage\*\*\*\*\*, for smoother hair

#### Powerful drying

- 20%\*\*\* faster drying, with a powerful 2300 W airflow
- Cool air setting to finish your style

#### ThermoShield technology

- ThermoShield technology, for ultimate heat protection

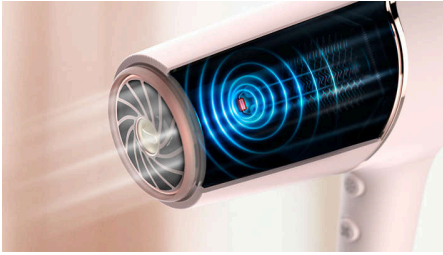
## 5000 Series

Hair Dryer

BHD530/00

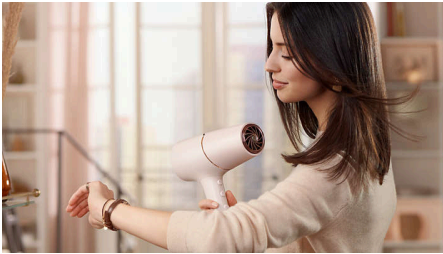
# Highlights

### ThermoShield technology



The overheat detect sensor actively optimises and controls the air temperature, protecting your hair from damage\*\* caused by overheating. Enjoy a stress-free drying experience with ThermoShield technology.

### 20%\*\*\* faster drying



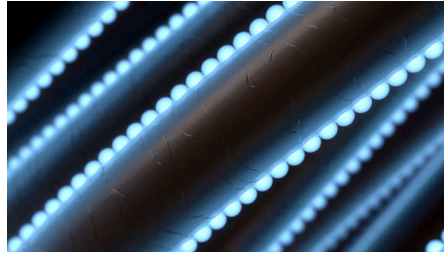
A more powerful airflow of 2300 W makes drying 20%\*\* faster while still protecting your hair.

### 110 km/h air speed\*\*\*\*



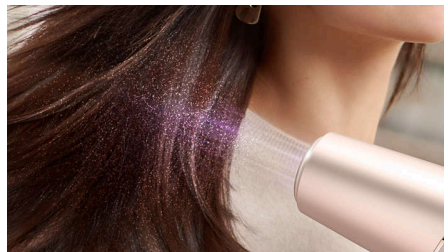
This hair dryer's high-performance motor has been developed for the professional market. It generates an air speed of up to 110 km/h\*\*\*\*, for fast drying and impressive styling.

### Mineral ionic care



Mineral ions reduce surface damage\*\*\*\*\* which can be caused by UV rays, making your hair smoother and more versatile.

### 4 x ionic care\*



This powerful ionic system generates up to 80 million ions per drying session, intensifying your hair's shine, so you can enjoy glossy, frizz-free hair.

### 6 heat and speed settings



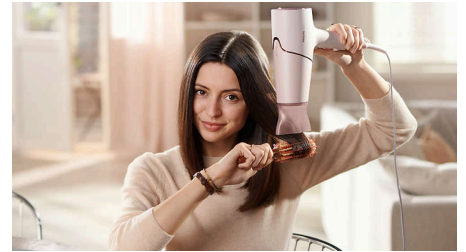
Easily pick the combination of heat and speed that works best for your hair and style. Six different settings ensure precise control for tailored styling.

### Cool air setting



The cool air setting provides a burst of cold air to finish and hold your style.

### 11 mm styling nozzle



The slim nozzle precisely focuses the air for quick touch-ups and perfecting small details of your style.

## 5000 Series

Hair Dryer

BHD530/00

# Specifications

### Attachments

Nozzle: 11 mm  
Volume diffuser

### Technical specifications

Cord length: 1.8 m  
Voltage: 220-240 V  
Wattage: 2300 W

Motor: DC

Colour/Finish: Pearl Peach  
Off mode power: < 0.3 W

### Features

Storage hook  
Heat/Speed settings: 6  
Cool shot

### Service

2 year worldwide warranty

### Caring technologies

Ionic technology: 4 x ions\*  
ThermoShield technology  
Mineral ionic care

