

PHILIPS

Wet & Dry electric shaver with SkinIQ

Shaver series 9000

Skin-level closeness

Dual SteelPrecision blades

Pressure Guard sensor

360 D Flexing heads



S9974/63



Superior closeness*, personalised skin comfort For superior closeness, even on a 5-day beard

Discover the world's most intelligent shaver powered by AI, Philips Shaver Series 9000. Cuts at skin level with Lift & Cut shaving system, while SkinIQ technology gives real-time pressure feedback to protect your skin.

A closer shave

- Cuts hair in every direction with 360-degree rotating blades
- Skin-level closeness with Lift & Cut shaving system
- Adapts to your contours with 360 degree Flexing Heads

SkinIQ technology

- 30% smoother*** gliding with Protective SkinGlide Coating
- Always the optimal pressure with the Pressure Guard Sensor
- Adjusts to your beard density with Power Adapt Sensor

For a convenient shave

- Effortless charging with convenient stand available to hand.
- Precision trimmer integrated in the handle
- 60 minutes of cordless shaving once fully charged
- Deep cleaning in just 1 minute for hygienic shaving
- Enhance your shaving experience with the Philips Shaving App
- Choose a convenient dry or refreshing wet shave

Highlights

Lift & Cut System



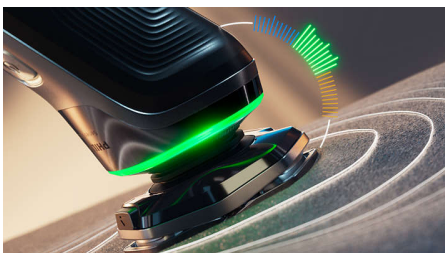
Our patented, unique Lift & Cut rotary technology lifts the hair gently out of its root before cutting it precisely at skin level close (up to 0.00 mm to the skin) without the blades even touching your skin.

Dual SteelPrecision blades



Philips rotary shavers are specifically designed to match your natural hair growth, capturing all of the hairs growing in any direction thanks to 360 degree rotating blades. With up to 150,000 cutting actions per minute, the Dual SteelPrecision blades cut more hair per stroke**

Pressure Guard sensor



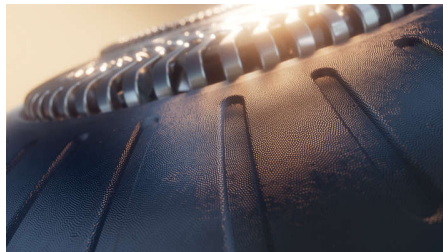
Using the right pressure is key for closeness and skin protection. Advanced sensors in the shaver read the pressure you apply, and the innovative light signal shows when you are pressing too hard or too little. For a personalised shave that is just right for you.

360 D Flexing heads



Designed to follow the contours of your face and even the neck, this Philips electric shaver has fully flexible heads that turn 360 for a thorough and comfortable shave.

Protective SkinGlide coating



A protective coating lies between the shaver heads and your skin. Made of up to 250,000 micro-tech beads per square centimetre, the coating improves gliding by 30%*** to minimise irritation.

Power Adapt sensor



The electric shaver has an intelligent facial-hair sensing technology that reads hair density 500 times per second. The Power Adapt Sensor auto-adapts the cutting power for an effortless and gentle shave.

Personalisation via app



Perfect your shave by pairing your shaver with the Philips Shaving App****. Shave by shave, track the progress of your skin, personalise your shave and master your technique for a shave that's as close as it is kind to skin.

Cable-free Quick Clean Pod



The powerful cleaning pod thoroughly cleans and lubricates your shaver in just 1 minute, keeping it performing at its best for longer. The pod is 10x more effective than cleaning with water****. It is the world's smallest cleaning pod, so you can store it easily and use it anywhere.

Wet and Dry



Adapt your shaving routine to your needs. With Wet and Dry, you can go for a comfortable dry shave or a refreshing wet shave. You can shave with gel or foam, even under the shower.

Specifications

Accessories

SmartClick: Precision trimmer, Cleansing Brush

Pouch: Travel case

Quick Clean Pod: Yes, 4 cartridges included

Travel and storage: Travel case

Power

Battery type: Li-Ion

Run time: 60 minutes

Charging: 1 hour full charge, 5-min quick charge

Design

Colour: Dark Chrome

Handle: Ergonomic grip and handling

Finishing: Timeless elegance

Service

Replacement head: Replace every 2 yrs with SH91

2 year warranty

Shaving Performance

Contour following: 360 D Flexing heads

Shaving system: Lift & Cut System, Dual SteelPrecision blades

SkinIQ technology: Power Adapt sensor, Nano SkinGlide Coating, Pressure Guard sensor, Motion Control sensor

Ease of use

Display: % Battery Level Indicator

Cleaning: Cable-free Quick Clean Pod, One-touch open, Fully washable

Wet and Dry: Wet and dry use

SmartClick attachment

Fits product type: RQ585/51 DOES NOT fit angular head type



* vs. predecessor Philips series 9000

** Compared to non-coated material

*** Based on Philips Series S7000 and Philips Shaving app users in 2019

**** Comparing shaving debris after using cleaning fluid vs. water in the cartridge