



Philips
Professional LED LCD TV

26" PrimeSuite
LED
DVB-T/C MPEG 2/4

26HFL4373D



The ideal TV for premium or interactive use

Philips Hotel LED LCD TV

With this energy efficient Hotel LED LCD TV, you will enjoy all the benefits of an interactive television and premium hotel features. Simply link our TV to the system of your choice for the best viewing experience and cost efficient solution.

Sustainable and safe

- Low power consumption
- Eco-friendly design and flame-retardant housing
- Green Button allows guest to save even more energy

Differentiating guest experience

- Integrated clock display with wake-up and message alarm
- Theme TV for easy location of guests' own national channels
- Advanced EPG and channel list
- Hotel Scenea for a tailored info and start-up channel

Advanced hotel features and future proof

- Brilliant LED images with low power consumption
- Serial Xpress Protocol for interactive systems
- MyChoice compatibility for recurring revenues
- VSecure for digital content protection in hotels
- Integrated Connectivity Panel

PHILIPS

Highlights

LED



The most advanced LED lighting technology in this TV combines an eye-catching minimalistic design with stunning image quality as well as the lowest power consumption in its category. On top of that, LED lighting technology does not contain any hazardous materials. Thus, with LED backlight you can enjoy low power consumption, high brightness, incredible contrast, sharpness and vibrant colours.

Serial Xpress Protocol (SXP)

The TV can be connected to external decoders and set-top boxes of all major interactive system providers, through the Serial Xpress Protocol (SXP).

Integrated Connectivity Panel

The Integrated Connectivity Panel allows your guests to seamlessly connect their personal devices to your TV without the need for an external Connectivity Panel.

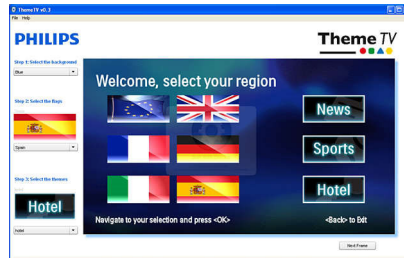
VSecure

To show HD premium content to the guest there is a need for strict content security precautions from the content industry. Philips has developed a total solution for HD content security in hotels, consisting of VSecure for HD content protection and NexGuard for HD forensic watermarking.

Hotel Scenea

Hotel Scenea allows you to select and store images on the TV that can be displayed as a start-up or info channel.

Theme TV



Theme TV offers an advanced user interface that enables your guests to navigate the guest menu to find their own country's channels, news and hotel information easily without the need of an interactive entertainment system.

MyChoice compatible



MyChoice offers a simple and low-cost way to offer your guests premium TV channels. At the same time it delivers an additional revenue stream which allows you to recover your initial TV investment.

Green Button

With the Green Button guests have the option to save even more energy on the TV by opting

for a higher backlight dimming or by switching off the screen when listening to radio. Another way to reduce a hotel's operating costs while involving guests directly.

Low power consumption

Philips TVs are designed to minimise power consumption. This will not only reduce environmental impact but also lower operating costs.

Integrated clock display

The built-in clock display, which is also a wake-up alarm, eliminates the need to invest in an additional clock with cables and connections in the room.

Eco-friendly design

Sustainability is integral to the way Philips does business. Philips TVs are designed and produced according to our EcoDesign principles aimed at minimising overall environmental impact, through lower power consumption, removal of hazardous substances, lower weight, more efficient packaging and better recyclability. Philips TVs also have a special housing of flame-retardant material. Independent tests carried out by emergency fire services have shown that whereas TVs can sometimes intensify fires caused by external sources, Philips TVs will not contribute to a fire.

Advanced EPG and channel list

The attractive EPG and channel list include intuitive buttons with clear guiding graphics to easily locate your favourite channels.

Specifications

Picture/Display

- Aspect ratio: Widescreen
- Diagonal screen size (inch): 26 inch
- Diagonal screen size (metric): 66 cm
- Colour cabinet: Whiskey tint deco front with high gloss black cabinet
- Panel resolution: 1366 x 768p
- Brightness: 400 cd/m²
- Picture enhancement: 3/2 - 2/2 motion pull down,

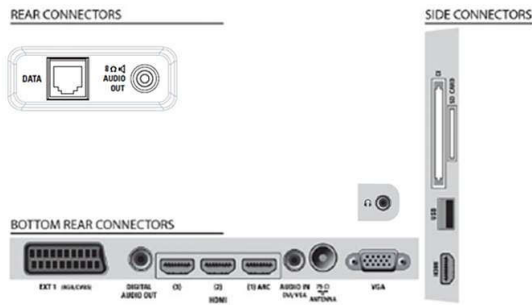
- 3D Combfilter, Active Control, Colour Enhancement, Colour Transient Improvement, Digital Noise Reduction, Luminance Transient Improver, Progressive scan, Sharpness Adjustment, 3D MA deinterlacing, Automatic skin tone correction, Dynamic contrast enhancement, 1080p 24/25/30 Hz processing, 1080p 50/60 Hz processing, Pixel Plus HD
- Display screen type: LCD WXGA+ Active Matrix

TFT

- Dynamic screen contrast: 150,000:1
- Response time (typical): 6 ms
- Viewing angle: 178° (H)/178° (V)
- Screen enhancement: Anti-Reflection coated screen

Supported Display Resolution

- Computer formats: 640 x 480, 60 Hz, 800 x 600,



Specifications

- 60 Hz, 1024 x 768, 60 Hz, 1280 x 1024, 60 Hz, 1280 x 720, 60 Hz, 1280 x 768, 60 Hz, 1360 x 768, 60 Hz
- Video formats: 480i, 60 Hz, 480p, 60 Hz, 576i, 50 Hz, 576p, 50 Hz, 1080i, 50, 60 Hz, 720p, 50, 60 Hz, 1080p, 24, 50, 60 Hz, 1080p, 24, 25, 30, 50, 60 Hz

Tuner/Reception/Transmission

- Aerial Input: 75 ohm coaxial (IEC75)
- Tuner bands: Hyperband, S-Channel, UHF, VHF
- TV system: PAL I, PAL B/G, SECAM B/G, SECAM L/L', DVB COFDM 2K/8K
- Digital TV: DVB-T MPEG4, DVB-C MPEG4
- Number of Pre-set Channels: 999
- Video Playback: PAL, SECAM, NTSC

Multimedia Applications

- Multimedia connections: USB
- Playback Formats: MP3, JPEG Still pictures, Slideshow files (.alb)
- Video Playback Formats: H264/MPEG-4 AVC

Convenience

- Ease of Installation: Plug and Play, Advanced Hotel Mode, Automatic Tuning System (ATS), Fine Tuning, PLL Digital Tuning, Automatic Channel Install (ACI), Auto Programme Naming, Autostore, Cloning of TV settings via USB, Installation menu locking, Security menu access, Keyboard lock-out, Programme Name
- Ease of Use: Auto Volume Leveller (AVL), 1 channel list analogue/digital, On-Screen Display, Programme List, Side Control, Graphical User Interface
- Clock: Sleep Timer, Dimmable, Integrated LCD Clock Display, Wake-up Clock
- Clock Enhancements: Synchro Time via TXT/DVB
- Comfort: Hotel Guest features, Welcome message, Switch on channel, Volume limitation, Sleep timer, Auto power on, Green/Fast startup, Message indicator
- Screen Format Adjustments: Movie expand 16:9, Widescreen, Super Zoom, Auto Format
- Electronic Programme Guide: 8-day Electronic Programme Guide, Now + Next EPG
- Remote Control: low battery detection, battery anti-theft protection
- Interactive hotel features: Block automatic channel update, Block over-the-air SW download, Connectivity panel compatible, Vsecure, MyChoice, SmartInstall, ThemeTV
- Remote control type: 22AV1104A/10 (RC6)
- Prison mode: Txt, MHEG, USB, EPG, Sub block
- Teletext: 1000-page Hypertext
- Other convenience: Kensington lock
- Firmware upgradeable: Firmware upgradeable via USB, Firmware upgradeable via RF
- Teletext enhancements: Fast text, Programme information Line

Healthcare

- Control: Multi remote control
- Safety: Double isolation Class II
- Convenience: Headphone out, Independent main speaker mute

Sound

- Output power (RMS): 2 x 3 W
- Sound System: Nicam Stereo
- Sound Enhancement: Auto Volume Leveller, Incredible Surround, Smart Sound

Loudspeakers

- Built-in speakers: 2

Connectivity

- Connectivity Enhancements: Fast Infrared loop through, Power on scart, Serial Xpress interface, USB2.0
- Number of HDMI connections: 4
- Number of Scarts: 1
- EasyLink (HDMI-CEC): One touch play, System standby
- Front/Side connections: USB 2.0, HDMI v1.3
- Ext 1 Scart: Audio L/R, RGB, CVBS in
- HDMI 1: HDMI v1.3
- Other connections: S/PDIF out (coaxial), PC-in VGA + Audio L/R in, Bathroom speaker out, Common Interface Plus (CI+)

Power

- Mains power: 220-240 V, 50/60 Hz
- Ambient temperature: 5°C to 40°C
- Power consumption (typical): 40 W

Green Specifications

- Safety: Flame-retardant housing
- Low Power Standby
- SmartPower Eco

Accessories

- Included accessories: Remote Control, Batteries for remote control, Power cord, Tabletop stand, Warranty Leaflet
- Optional accessories: Wall mount (tilt) 22AV3100/10, Set up remote 22AV8573/00

Dimensions

- Set Width: 637 mm
- Set Height: 411 mm
- Set Depth: 49.6 mm
- Product weight: 6 kg
- Set width (with stand): 637 mm
- Set height (with stand): 447 mm
- Set depth (with stand): 138 mm
- Product weight (+stand): 6.5 kg
- Box width: 800 mm
- Box height: 520 mm
- Box depth: 180 mm
- Wall-mount compatible: 75 x 75 mm



Issue date 2024-03-24

Version: 2.0.5

EAN: 87 12581 60243 7

© 2024 Koninklijke Philips N.V.
All Rights reserved.

Specifications are subject to change without notice.
Trademarks are the property of Koninklijke Philips N.V.
or their respective owners.

www.philips.com