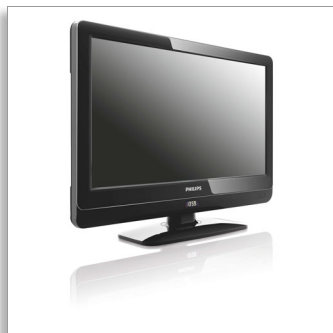


Philips  
Professional LCD TV

22" Pro+ System  
LCD  
DVB-T MPEG4\*



22HFL4371D

## More guest comfort

### Philips Digital HD Hospitality LCD TV

This modern Hospitality TV brings more guest convenience to the room and enables guests to connect their own devices. It also allows you to show DVB-T HD channels to your guests.

#### Best total cost of ownership

- Set-top box compatible
- USB cloning of all settings for quick installation

#### Sustainable and safe

- Eco-friendly design and flame-retardant housing

#### Differentiating guest experience

- Integrated clock display with wake-up and message alarm
- One combined channel list for Analogue and Digital channels
- Easy-to-use Hospitality Remote Control
- Philips Connectivity Panel compatible to enjoy guest devices
- Attractive channel list for easy navigation

#### Advanced hotel features and future proof

- Switch On Channel Programming
- Integrated DVB-T tuner with MPEG 4
- Welcome message on screen display

# PHILIPS

# Highlights

## Integrated DVB-T tuner MPEG 4

The integrated DVB-T tuner with MPEG 4 lets you receive Digital Terrestrial TV that allows you to show DVB-T HD channels to your guest.

## Welcome message

A welcome greeting is displayed each time the TV set is switched on.

## Switch On Channel Programming

Perfect for in-house advertising or information channels as it allows a predefined channel to be shown when the TV is turned on.

## Integrated clock display

The built-in clock display, which is also a wake-up alarm, eliminates the need to invest in an additional clock with cables and connections in the room.

## One combined channel list

One integrated channel list for digital and analogue channels. This allows the guest to flick seamlessly between Analogue and Digital channels.

## Attractive channel list

The attractive channel list includes clear and intuitive buttons with clear guiding graphics for easily finding your favourite channels.

## Hospitality Remote Control

This stylish remote control is especially designed for hospitality usage. For an easy-to-use experience for the guest, the most important buttons and functions are conveniently placed on the remote. In addition, most Hospitality remote controls come with an anti-theft battery provision, a feature that contributes to efficient hotel operations.

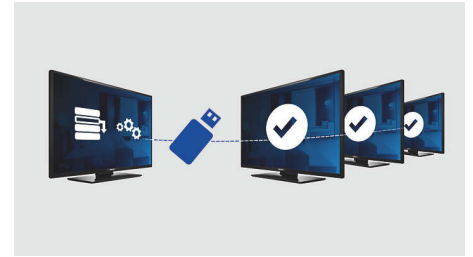
## Connectivity Panel compatible

This TV works seamlessly with Philips Connectivity Panels. The guest can easily connect and enjoy media from a PC, MP3 player, DVD player, camcorder and various other devices. With autosensing, the Connectivity Panel and the TV will automatically switch to display the content from the connected guest device.

## Set-top box compatible

This hotel TV can be connected to a set-top box offering power on scart and the Serial Express Lite protocol.

## USB Cloning



Provides the ability to easily copy all programming and channel programming settings from one TV into other TV sets in less than a minute. The feature ensures uniformity between TV sets and significantly reduces installation time and costs.

## Eco-friendly design

Sustainability is integral to the way Philips does business. Philips TVs are designed and produced according to our EcoDesign principles aimed at minimising overall environmental impact, through lower power consumption, removal of hazardous substances, lower weight, more efficient packaging and better recyclability. Philips TVs also have a special housing of flame-retardant material. Independent tests carried out by emergency fire services have shown that whereas TVs can sometimes intensify fires caused by external sources, Philips TVs will not contribute to a fire.

# Specifications

## Picture/Display

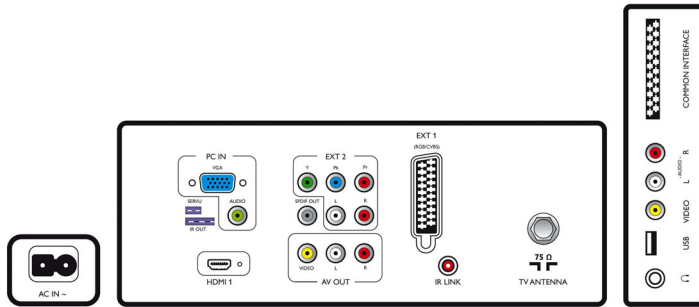
- Aspect ratio: Widescreen
- Diagonal screen size (inch): 22 inch
- Diagonal screen size (metric): 56 cm
- Colour cabinet: High gloss black deco front with black cabinet
- Panel resolution: 1366 x 768p
- Brightness: 350 cd/m<sup>2</sup>
- Picture enhancement: 3/2 - 2/2 motion pull down,

- 3D Combfilter, Active Control, Colour Enhancement, Colour Transient Improvement, Digital Crystal Clear, Digital Noise Reduction, Luminance Transient Improver, Progressive scan, Sharpness Adjustment, 3D MA deinterlacing, Automatic skin tone correction, Dynamic contrast enhancement, 1080p 24/25/30 Hz processing, 1080p 50/60 Hz processing
- Display screen type: LCD WXGA+ Active Matrix

- TFT
- Dynamic screen contrast: 5000:1
- Response time (typical): <math>\leq 5</math> ms
- Viewing angle: 178° (H)/178° (V)
- Screen enhancement: Anti-Reflection coated screen

## Supported Display Resolution

- Computer formats: 640 x 480, 60 Hz, 800 x 600,



# Specifications

- 60 Hz, 1024 x 768, 60 Hz, 1280 x 1024, 60 Hz, 1360 x 768, 60 Hz, 1280 x 720, 60 Hz, 1280 x 768, 60 Hz, Via HDMI/DVI input,
- Video formats: 480i, 60 Hz, 480p, 60 Hz, 576i, 50 Hz, 576p, 50 Hz, 1080i, 50, 60 Hz, 720p, 50, 60 Hz, 1080p, 24, 50, 60 Hz, 1080p, 24, 25, 30, 50, 60 Hz

## Tuner/Reception/Transmission

- Aerial Input: 75 ohm coaxial (IEC75)
- Tuner bands: Hyperband, S-Channel, UHF, VHF
- TV system: PAL I, PAL B/G, SECAM B/G, SECAM L/L', DVB COFDM 2K/8K
- Digital TV: DVB-T MPEG4\*
- Number of Pre-set Channels: 250
- Video Playback: PAL, SECAM, NTSC

## Multimedia Applications

- Multimedia connections: USB
- Playback Formats: MP3, JPEG Still pictures, Slideshow files (.alb)

## Convenience

- Ease of Installation: Plug and Play, Advanced Hotel Mode, Automatic Tuning System (ATS), Fine Tuning, PLL Digital Tuning, Automatic Channel Install (ACI), Programme Name, Auto Programme Naming, Autostore, Cloning of TV settings via USB, Installation menu locking, Security menu access, Keyboard lock-out
- Ease of Use: Auto Volume Leveller (AVL), 1 channel list analogue/digital, On-Screen Display, Programme List, Side Control, Graphical User Interface
- Clock: Dimmable, Integrated LCD Clock Display, Sleep Timer, Wake-up Clock
- Clock Enhancements: Synchro Time via TXT/DVB
- Comfort: Hotel Guest features, Auto power on, Welcome message, Message indicator, Switch on channel, Volume limitation, Sleep timer, Green/Fast startup
- Screen Format Adjustments: 4:3, Movie expand 14:9, Movie expand 16:9, Widescreen, Subtitle Zoom, Super Zoom, Auto Format
- Electronic Programme Guide: 8-day Electronic Programme Guide, Now + Next EPG
- Remote Control: low battery detection, battery anti-theft protection
- Interactive hotel features: Connectivity panel compatible, Block automatic channel update, Block over-the-air SW download
- Remote control type: 22AV1104/10 (RC6)
- Prison mode: Teletext and MHEG disable
- Teletext: 1000-page Hypertext
- Other convenience: Kensington lock
- Firmware upgradeable: Firmware upgradeable via USB, Firmware upgradeable via RF
- Picture in Picture: Text dual screen
- Teletext enhancements: Fast text, Programme information Line

## Healthcare

- Control: Multi remote control, Pendant control via IR-link

- Safety: Double isolation Class II
- Convenience: Headphone out, Independent main speaker mute

## Sound

- Output power (RMS): 2 x 5 W
- Sound System: Nicam Stereo
- Sound Enhancement: Auto Volume Leveller, Incredible Surround, Smart Sound

## Loudspeakers

- Built-in speakers: 2

## Connectivity

- Connectivity Enhancements: Serial Xpress interface, Fast Infrared loop through, Power on scart, USB2.0
- Number of HDMI connections: 1
- Audio Output - Digital: Coaxial (cinch)
- Number of Scarts: 1
- EasyLink (HDMI-CEC): One touch play, System standby
- Front/Side connections: Audio L/R in, CVBS in, USB 2.0
- Ext 1 Scart: Audio L/R, RGB
- HDMI 1: HDMI v1.3
- Other connections: S/PDIF out (coaxial), Composite video (CVBS) out, PC-in VGA + Audio L/R in, Monitor out L/R (Cinch), Common Interface
- Ext 3: Audio L/R in, YPbPr

## Power

- Mains power: 220-240 V, 50/60 Hz
- Ambient temperature: 5°C to 40°C
- Power consumption: 45 W
- Standby power consumption: <math>\leq 1\text{ W}</math> (w. clock)

## Green Specifications

- Safety: Flame-retardant housing
- Low Power Standby
- SmartPower Eco

## Accessories

- Included accessories: Remote Control, Batteries for remote control, Power cord, Tabletop stand, Warranty Leaflet
- Optional accessories: Set up Remote RC2573GR, Wall mount (tilt) 22AV3100/10

## Dimensions

- Set Width: 541 mm
- Set Height: 375.3 mm
- Set Depth: 67.8 mm
- Product weight: 5.27 kg
- Set width (with stand): 541 mm
- Set height (with stand): 417.3 mm
- Set depth (with stand): 150 mm
- Product weight (+stand): 5.5 kg
- Box width: 590 mm
- Box height: 489 mm
- Box depth: 162 mm
- Wall-mount compatible: 100 x 100 mm



Issue date 2024-03-24

Version: 4.1.3

EAN: 87 12581 49560 2

© 2024 Koninklijke Philips N.V.  
All Rights reserved.

Specifications are subject to change without notice.  
Trademarks are the property of Koninklijke Philips N.V.  
or their respective owners.

[www.philips.com](http://www.philips.com)

\* For information on DVB-T enrolled countries, please ask your Philips contact.