

Philips  
Professional LED LCD TV

**22" PrimeSuite**  
LED  
DVB-T/C MPEG 2/4

**22HFL4373D**



## The ideal TV for premium or interactive use

### Philips Hotel LED LCD TV

With this energy efficient Hotel LED LCD TV, you will enjoy all the benefits of an interactive television and premium hotel features. Simply link our TV to the system of your choice for the best viewing experience and cost efficient solution.

#### **Sustainable and safe**

- Low power consumption
- Eco-friendly design and flame-retardant housing
- Green Button allows guest to save even more energy

#### **Differentiating guest experience**

- Integrated clock display with wake-up and message alarm
- Theme TV for easy location of guests' own national channels
- Advanced EPG and channel list
- Hotel Scenea for a tailored info and start-up channel

#### **Advanced hotel features and future proof**

- Brilliant LED images with low power consumption
- Serial Xpress Protocol for interactive systems
- MyChoice compatibility for recurring revenues
- VSecure for digital content protection in hotels
- Integrated Connectivity Panel

# PHILIPS

# Highlights

## Integrated clock display

The built-in clock display, which is also a wake-up alarm, eliminates the need to invest in an additional clock with cables and connections in the room.

## Low power consumption

Philips TVs are designed to minimise power consumption. This will not only reduce environmental impact but also lower operating costs.

## Serial Xpress Protocol (SXP)

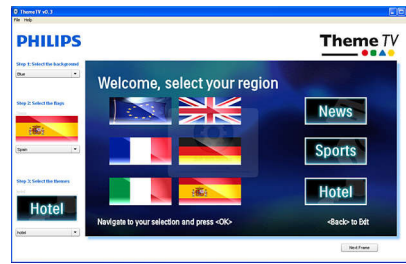
The TV can be connected to external decoders and set-top boxes of all major interactive system providers, through the Serial Xpress Protocol (SXP).

## MyChoice compatible



MyChoice offers a simple and low-cost way to offer your guests premium TV channels. At the same time it delivers an additional revenue stream which allows you to recover your initial TV investment.

## Theme TV



Theme TV offers an advanced user interface that enables your guests to navigate the guest menu to find their own country's channels, news and hotel information easily without the need of an interactive entertainment system.

## VSecure

To show HD premium content to the guest there is a need for strict content security precautions from the content industry. Philips has developed a total solution for HD content security in hotels, consisting of VSecure for HD content protection and NexGuard for HD forensic watermarking.

## Integrated Connectivity Panel

The Integrated Connectivity Panel allows your guests to seamlessly connect their personal devices to your TV without the need for an external Connectivity Panel.

## LED



The most advanced LED lighting technology in this TV combines an eye-catching minimalistic

design with stunning image quality as well as the lowest power consumption in its category. On top of that, LED lighting technology does not contain any hazardous materials. Thus, with LED backlight you can enjoy low power consumption, high brightness, incredible contrast, sharpness and vibrant colours.

## Advanced EPG and channel list

The attractive EPG and channel list include intuitive buttons with clear guiding graphics to easily locate your favourite channels.

## Eco-friendly design

Sustainability is integral to the way Philips does business. Philips TVs are designed and produced according to our EcoDesign principles aimed at minimising overall environmental impact, through lower power consumption, removal of hazardous substances, lower weight, more efficient packaging and better recyclability. Philips TVs also have a special housing of flame-retardant material. Independent tests carried out by emergency fire services have shown that whereas TVs can sometimes intensify fires caused by external sources, Philips TVs will not contribute to a fire.

## Hotel Scenea

Hotel Scenea allows you to select and store images on the TV that can be displayed as a start-up or info channel.

## Green Button

With the Green Button guests have the option to save even more energy on the TV by opting for a higher backlight dimming or by switching off the screen when listening to radio. Another way to reduce a hotel's operating costs while involving guests directly.

# Specifications

## Picture/Display

- Aspect ratio: Widescreen
- Diagonal screen size (inch): 22 inch
- Diagonal screen size (metric): 56 cm
- Colour cabinet: Whiskey tint deco front with high gloss black cabinet
- Panel resolution: 1366 x 768p
- Brightness: 300 cd/m<sup>2</sup>
- Picture enhancement: 3/2 - 2/2 motion pull down,

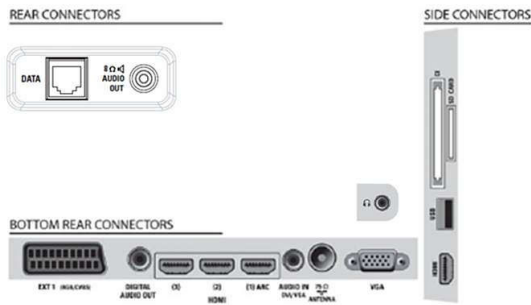
- 3D Combfilter, Active Control, Colour Enhancement, Colour Transient Improvement, Digital Noise Reduction, Luminance Transient Improver, Progressive scan, Sharpness Adjustment, 3D MA deinterlacing, Automatic skin tone correction, Dynamic contrast enhancement, Pixel Plus HD, 1080p 24/25/30 Hz processing, 1080p 50/60 Hz processing
- Display screen type: LCD WXGA+ Active Matrix

## TFT

- Dynamic screen contrast: 150,000:1
- Response time (typical): 6 ms
- Viewing angle: 178° (H)/178° (V)
- Screen enhancement: Anti-Reflection coated screen

## Supported Display Resolution

- Computer formats: 640 x 480, 60 Hz, 800 x 600,



# Specifications

- 60 Hz, 1024 x 768, 60 Hz, 1280 x 1024, 60 Hz, 1280 x 720, 60 Hz, 1280 x 768, 60 Hz, 1360 x 768, 60 Hz
- Video formats: 480i, 60 Hz, 480p, 60 Hz, 576i, 50 Hz, 576p, 50 Hz, 1080i, 50, 60 Hz, 720p, 50, 60 Hz, 1080p, 24, 50, 60 Hz, 1080p, 24, 25, 30, 50, 60 Hz

## Tuner/Reception/Transmission

- Aerial Input: 75 ohm coaxial (IEC75)
- Tuner bands: Hyperband, S-Channel, UHF, VHF
- TV system: PAL I, PAL B/G, SECAM B/G, SECAM L/L', DVB COFDM 2K/8K
- Digital TV: DVB-C MPEG4, DVB-T MPEG4
- Number of Pre-set Channels: 999
- Video Playback: PAL, SECAM, NTSC

## Multimedia Applications

- Multimedia connections: USB
- Playback Formats: MP3, JPEG Still pictures, Slideshow files (.alb)
- Video Playback Formats: H264/MPEG-4 AVC

## Convenience

- Ease of Installation: Plug and Play, Advanced Hotel Mode, Automatic Tuning System (ATS), Fine Tuning, PLL Digital Tuning, Automatic Channel Install (ACI), Programme Name, Auto Programme Naming, Autostore, Cloning of TV settings via USB, Installation menu locking, Security menu access, Keyboard lock-out
- Ease of Use: Auto Volume Leveller (AVL), 1 channel list analogue/digital, On-Screen Display, Programme List, Side Control, Graphical User Interface
- Clock: Dimmable, Integrated LCD Clock Display, Sleep Timer, Wake-up Clock
- Clock Enhancements: Synchro Time via TXT/DVB
- Comfort: Hotel Guest features, Auto power on, Green/Fast startup, Welcome message, Message indicator, Switch on channel, Volume limitation, Sleep timer
- Screen Format Adjustments: Movie expand 16:9, Widescreen, Super Zoom, Auto Format
- Electronic Programme Guide: 8-day Electronic Programme Guide, Now + Next EPG
- Remote Control: low battery detection, battery anti-theft protection
- Interactive hotel features: Connectivity panel compatible, ThemeTV, Block automatic channel update, Block over-the-air SW download, Vsecure, SmartInstall, MyChoice
- Remote control type: 22AV1104A/10 (RC6)
- Prison mode: Txt, MHEG, USB, EPG, Sub block
- Teletext: 1000-page Hypertext
- Other convenience: Kensington lock
- Firmware upgradeable: Firmware upgradeable via USB, Firmware upgradeable via RF
- Teletext enhancements: Fast text, Programme information Line

## Healthcare

- Control: Multi remote control
- Safety: Double isolation Class II
- Convenience: Headphone out, Independent main speaker mute

## Sound

- Output power (RMS): 2 x 3 W
- Sound System: Nicam Stereo
- Sound Enhancement: Auto Volume Leveller, Incredible Surround, Smart Sound

## Loudspeakers

- Built-in speakers: 2

## Connectivity

- Connectivity Enhancements: Serial Xpress interface, Fast Infrared loop through, Power on scart, USB2.0
- Number of HDMI connections: 4
- Number of Scarts: 1
- EasyLink (HDMI-CEC): One touch play, System standby
- Front/Side connections: USB 2.0, HDMI v1.3
- Ext 1 Scart: Audio L/R, RGB, CVBS in
- HDMI 1: HDMI v1.3
- Other connections: S/PDIF out (coaxial), PC-in VGA + Audio L/R in, Bathroom speaker out, Common Interface Plus (CI+)

## Power

- Mains power: 220-240 V, 50/60 Hz
- Ambient temperature: 5°C to 40°C
- Power consumption (typical): 30 W

## Green Specifications

- Safety: Flame-retardant housing
- Low Power Standby
- SmartPower Eco

## Accessories

- Included accessories: Remote Control, Batteries for remote control, Power cord, Tabletop stand, Warranty Leaflet
- Optional accessories: Wall mount (tilt) 22AV3100/10, Set up remote 22AV8573/00

## Dimensions

- Set Width: 526 mm
- Set Height: 343 mm
- Set Depth: 49.4 mm
- Product weight: 4 kg
- Set width (with stand): 526 mm
- Set height (with stand): 369 mm
- Set depth (with stand): 149 mm
- Product weight (+stand): 4.2 kg
- Box width: 580 mm
- Box height: 426 mm
- Box depth: 133 mm
- Wall-mount compatible: 75 x 75 mm



Issue date 2024-03-24

Version: 2.1.9

EAN: 87 12581 60240 6

© 2024 Koninklijke Philips N.V.  
All Rights reserved.

Specifications are subject to change without notice.  
Trademarks are the property of Koninklijke Philips N.V.  
or their respective owners.

[www.philips.com](http://www.philips.com)